

# ROHINGYA REFUGEE CRISIS

Camp Settlement and Protection Profiling

Cox's Bazar, Bangladesh

Round 3

April 2018



©UNHCR/Roger Arnold



**UNHCR**  
The UN Refugee Agency

**REACH** Informing  
more effective  
humanitarian action



# Overview

Upazila: Ukhiya | Union: Palong Khali

Settlement and Protection Profiling Round 3

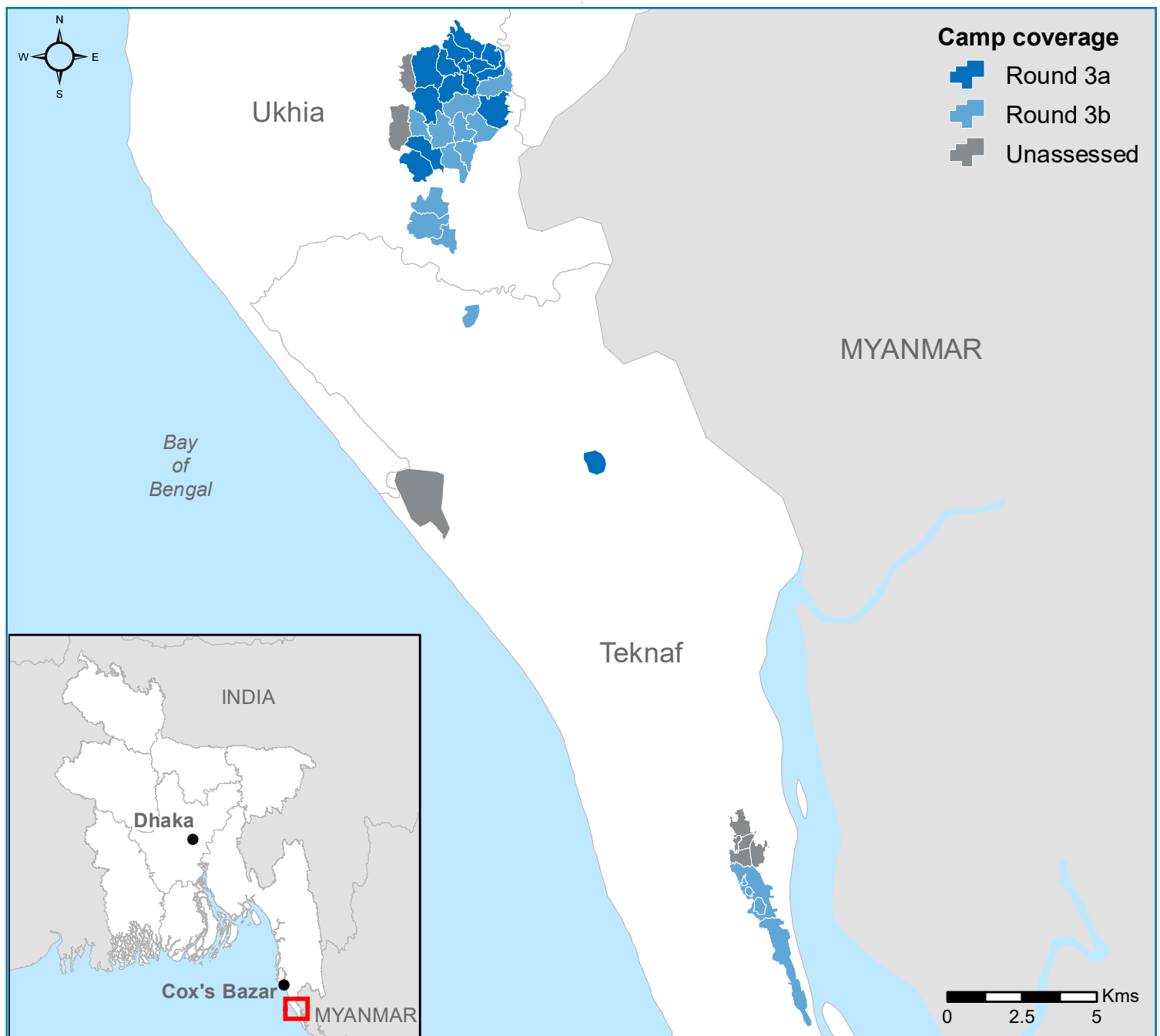
## Introduction

This profile provides a multisector overview of conditions in the Rohingya refugee camps in Cox's Bazar District, Bangladesh. Data for the findings were collected in 29 camps from 7-27 March 2018 (Round 3a) and 15-20 April 2018 (Round 3b) as part of the Settlement and Protection Profiling exercise funded by UNHCR and implemented by REACH. These profiles specifically look at conditions for those families who have arrived since 25 August 2017. Key indicators provide contextual and operational findings at the household level. The full dataset, with indicators presented by theme is available on the UNHCR website and REACH Resource Centre.

## Methodology

Primary data were collected through household surveys of families who have arrived since 25 August 2017, randomly sampled from the RRRC-UNHCR Family Counting dataset. The sampling was designed so findings are statistically representative and can be generalised at the site level with at least a 95% confidence level and a 10% margin of error. Data for the demographics and the People With Specific Needs (PWSN) section are taken from the Family Counting dataset provided by UNHCR and presented to provide household data for evidence-based programming. Additionally, all shelter footprint data, which was used to calculate shelter and camp population density, was provided by OpenStreetMap (OSM).

## Coverage Map





# Camp 16

Upazila: Ukhia | Union: Palong Khali

Settlement and Protection Profiling Round 3

## Key Camp Information

**Camp management:**  
IOM / CARE

**Population:**  
21,614 individuals<sup>1</sup>  
4,830 families<sup>1</sup>

**Shelters:**  
4,488

**Camp area:**  
0.71 km<sup>2</sup>

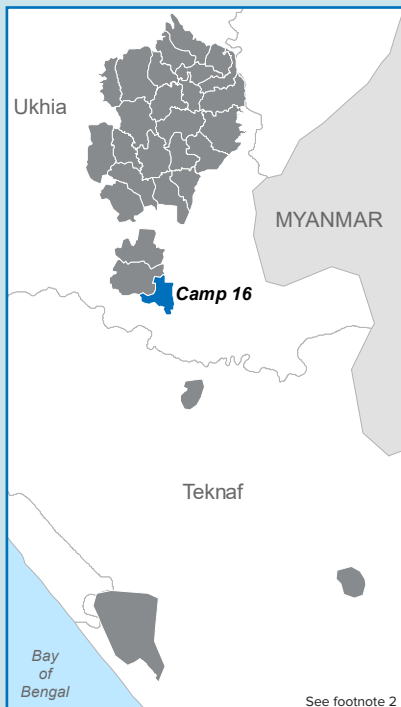
**Population density:**  
56,364 individuals / km<sup>2</sup>

**Average covered area per person:** 3.51 m<sup>2</sup>

**Average camp area per person:** 17.7 m<sup>2</sup>

**Shelter density:**  
6,285 shelters / km<sup>2</sup>

**GPS coordinates:**  
21.20312, 92.1653



## Protection

### Protection, safety and security

#### Top ten most commonly reported protection and safety concerns:<sup>3</sup>

None	42%	Animal attack	9%
Natural disasters	41%	Crime	8%
Children getting lost	33%	Human trafficking	8%
Site problems	22%	Harassment	2%
Movement restrictions	17%	Lack of documentation	2%

#### Top ten most commonly reported interventions needed:<sup>3</sup>

Warning systems	39%	Locks	12%
Nothing	32%	Fencing	7%
Site improvement	24%	Family unification points	6%
Legal assistance	17%	Permission to move freely	5%
More police / military	17%	Do not know	5%

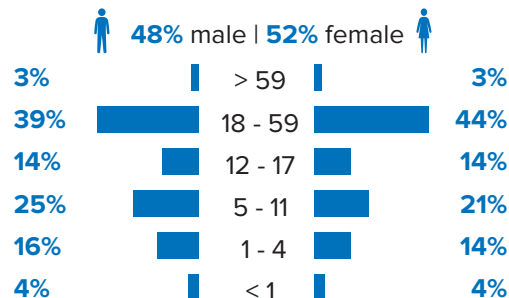
### People with specific needs (PWSN)

#### Proportion of individuals with specific needs:<sup>1,4</sup>

Single mother	15%	Separated children	2%
Elderly at risk	4%	Elderly with child	2%
Persons with disability	4%	Single father	1%
Medical condition	3%	Unaccompanied child	1%
Child-headed family	2%		

## Demographics<sup>1</sup>

### Age and gender breakdown



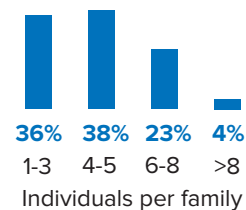
- 55% of individuals are under 18.
- 80% of individuals are women and children.

### Period of arrival

94% of families reported arriving 25 August 2017 or later.

### Family size

#### Number of individuals per family:

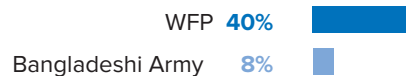


- There is an average of 4.5 individuals per family.

## Food Security

### Food assistance

- 96% of families reported accessing food assistance in the last month, of these the common reported sources were:<sup>3</sup>



### Consumption-based coping strategies

#### Top three most common consumption-based coping strategies:<sup>3</sup>



### Infant nutrition

- 33% of families reported receiving a supplementary feeding ration for children under 5.
- 10% of families reported receiving a breast-milk substitute (BMS) donation.

1 Data provided by the RRRC-UNHCR Family Counting exercise.

2 The boundaries and names used on this map do not imply official endorsement or acceptance by the United Nations

3 Respondents could select multiple items from a list.

4 Self-reported and not verified through medical records.



**UNHCR**  
The UN Refugee Agency

**REACH** Informing more effective humanitarian action



# Camp 16

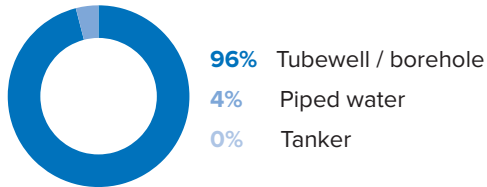
Upazila: Ukhia | Union: Palong Khali

Settlement and Protection Profiling Round 3

## Water, Sanitation and Hygiene

### Water sources

Reported most common sources of water:

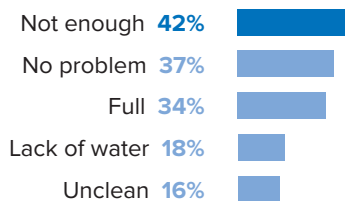


### Water treatment

- 24% of families reported treating water
- 20% of families reported using chlorination tablets

### Latrines

Top five reported issues with latrines:<sup>3</sup>

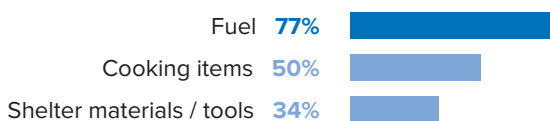


### Hygiene practices

- 60% of families reported having a designated shower or bath.
- 89% of families reported having access to soap.
- 72% of families reported using public latrines.

## Non-Food Items (NFIs)

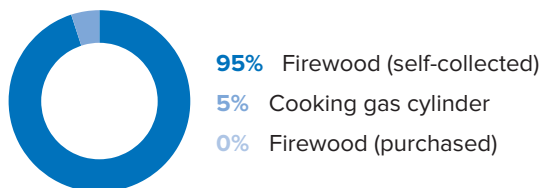
Reported top three most needed NFI items:<sup>3</sup>



- 87% of families received NFI kits since arrival

### Fuel

Reported most common sources of fuel:

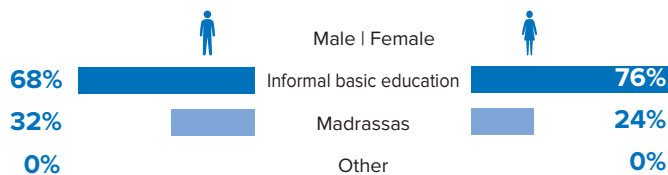


- 97% of families reported cooking inside their shelter

<sup>3</sup> Respondents could select multiple items from a list.

## Education

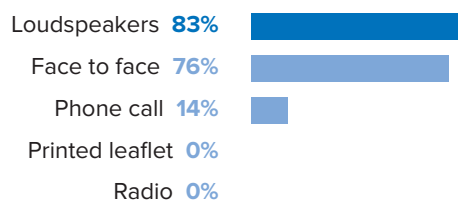
### Providers of education services



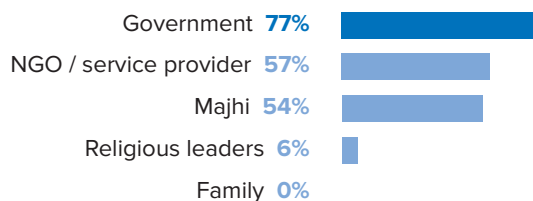
## Information and Communication

### Sources of information

Top five reported preferred means of communication:<sup>3</sup>



Top five reportedly most trusted sources of information:<sup>3</sup>

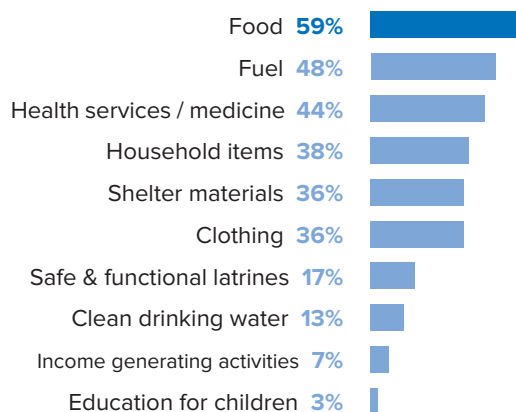


## Shelter

- 59% of families reported living in shelters made of bamboo and plastic sheeting.
- 83% of families reported living in lockable shelters.
- 46% of families reported living in shared shelters.

## Priority Needs

Reported top ten priority needs:<sup>3</sup>



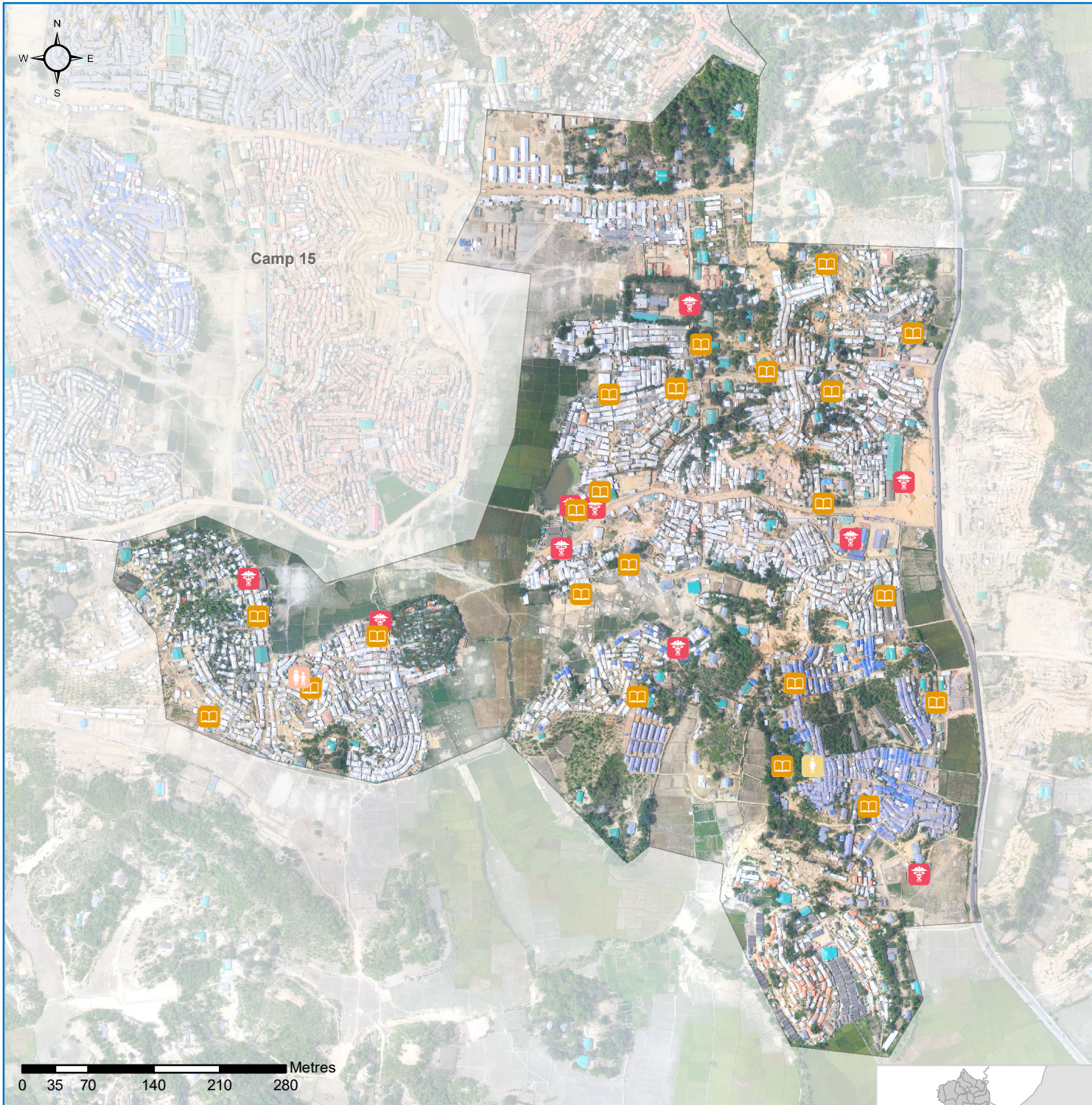





# Camp 16



Upazila: Ukhia | Union: Palong Khali

Settlement and Protection Profiling Round 3

## General Infrastructure Map



-  Camp in charge office
-  Children friendly space
-  Temporary learning space

-  Health facility
-  Safe space for women and girls

*The boundaries and names used on this map do not imply official endorsement or acceptance by the United Nations*



**UNHCR**  
The UN Refugee Agency

**REACH** Informing more effective humanitarian action



© UNHCR/Roger Arnold

## CONTACT DETAILS

For further information, please contact the  
UNHCR, Cox's Bazar, Bangladesh, [bgdcoim@unhcr.org](mailto:bgdcoim@unhcr.org)



**UNHCR**  
The UN Refugee Agency

**REACH** Informing  
more effective  
humanitarian action