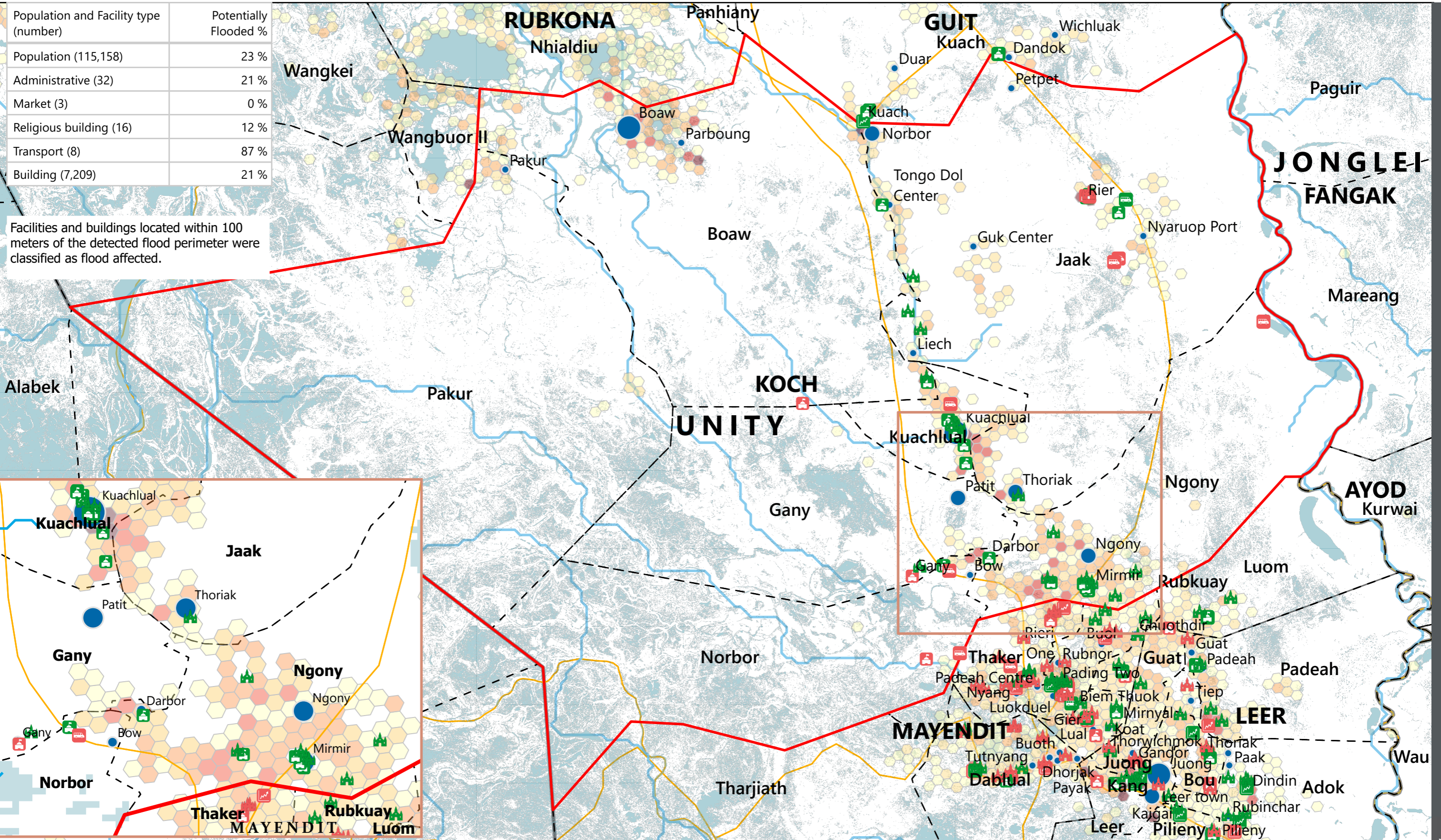


# SOUTH SUDAN - Koch County

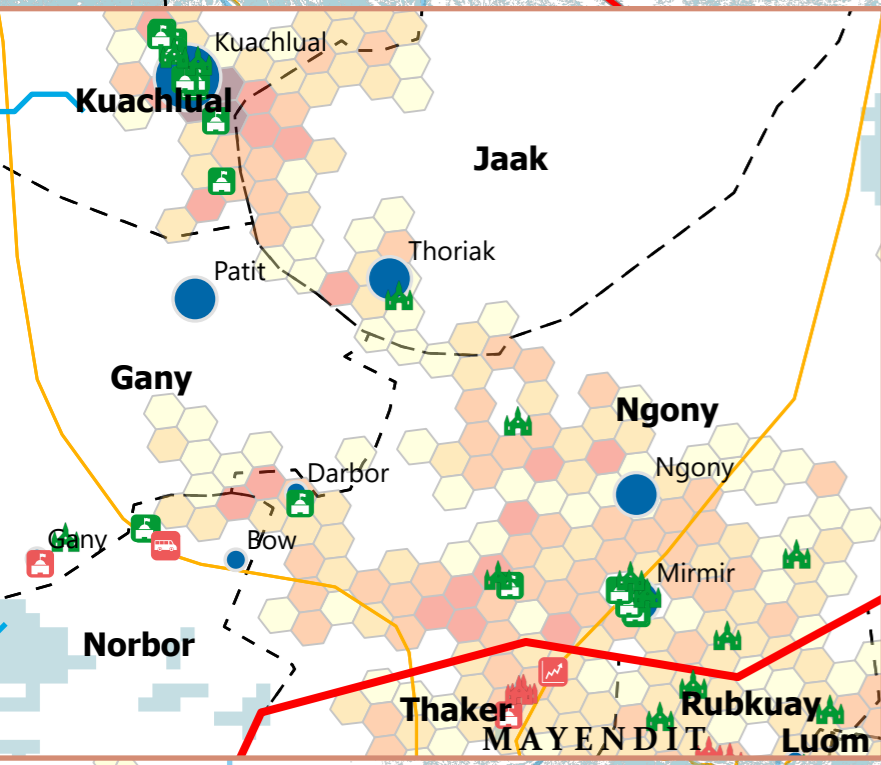
## Flood Impact Map: Administrative & Other Facilities (October 2025)

For Humanitarian Purposes Only  
Production Date: 22 October 2025



Population and Facility type (number)	Potentially Flooded %
Population (115,158)	23 %
Administrative (32)	21 %
Market (3)	0 %
Religious building (16)	12 %
Transport (8)	87 %
Building (7,209)	21 %

Facilities and buildings located within 100 meters of the detected flood perimeter were classified as flood affected.



Population (Kontur, 2023)

1 - 100
101 - 250
251 - 500
501 - 750
> 750

Satellite-detected flood extent (FEWSNET, as of 30th September 2025)

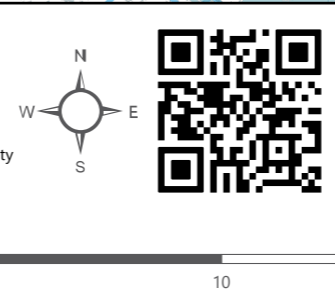
Settlements (Population)

< 5,000
5,001 - 10,000

> 10,000
Unaffected Administrative Office
Potentially Affected Administrative Office
Unaffected Market
Potentially Affected Market

Unaffected Transport Facility
Potentially Affected Transport Facility
Unaffected Religious Centre
Potentially Affected Religious Centre

Roads
River
Payam
County
State



Data sources: Source: REACH, OCHA, UNMISS, IOM,DTM, UNOSAT, FEWSNET, WHO, IOM, DTM, Global Google-Microsoft Open Buildings Dataset (2023)  
Coordinate System: Name: GCS WGS 1984  
File: REACH\_SSD\_Map\_Unity\_Koch\_Flood\_Impact\_Administrative\_22\_Oct\_2025  
Contact: reach.mapping@impact-initiatives.org  
Note: Data, designations and boundaries contained on this map are not warranted to be error-free and do not imply acceptance by REACH partners, associates or donors mentioned on this map.