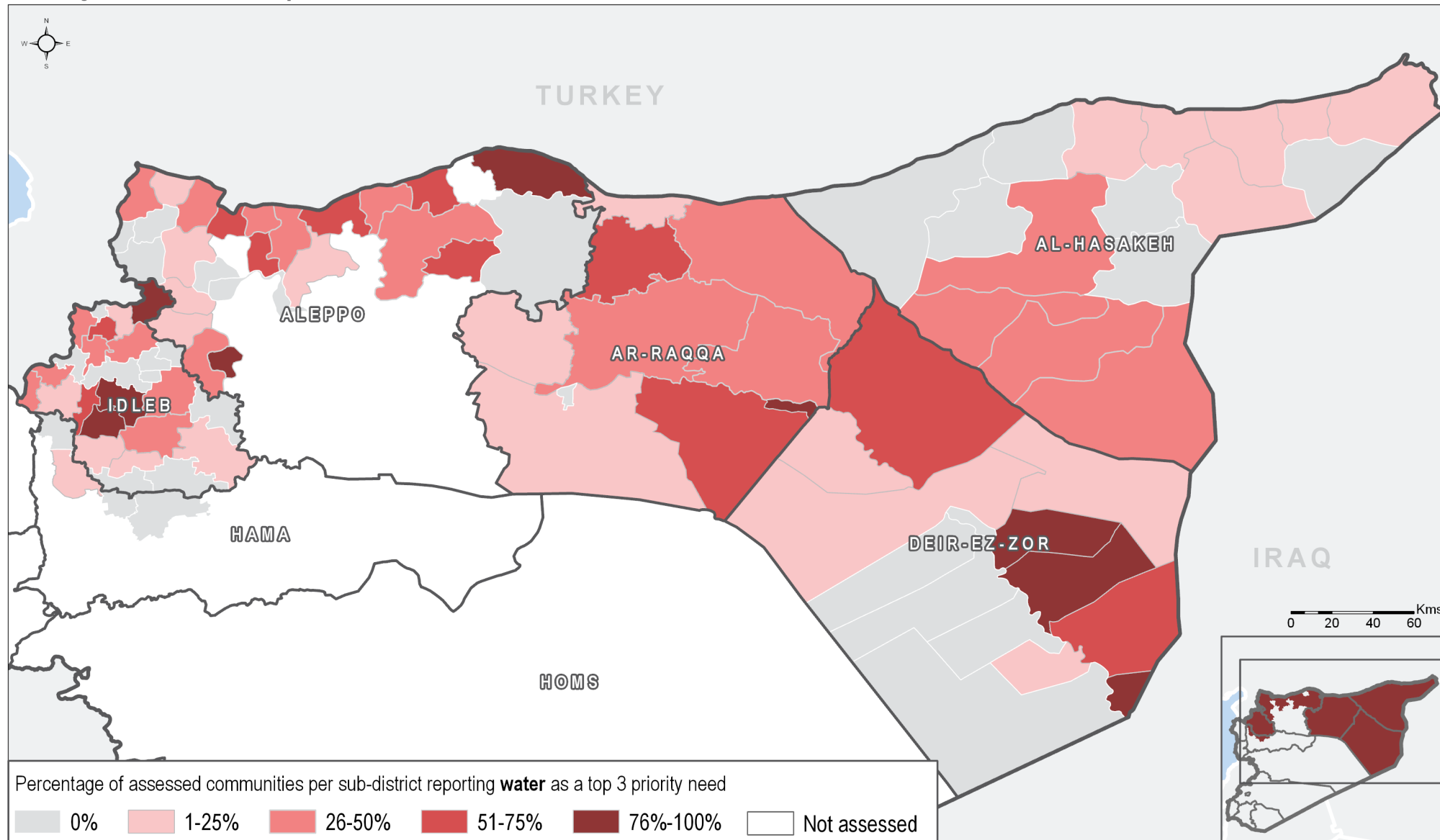


Priority Need: Water - April 2019

Humanitarian Response Only
Production date : 02/06/2019



Data source: REACH - Humanitarian Situation Overview of Syria (HSOS)

Priority need questions were 'select up to three' so the percentages across all maps add up to more than 100%.

Priority needs reported are the perceived top 3 priority needs as reported by KIs within assessed communities and are not necessarily representative of actual priorities.

Annexes detailing the priorities reported by each assessed community are available on request.

Humanitarian Situation Overview in Syria (HSOS) April 2019

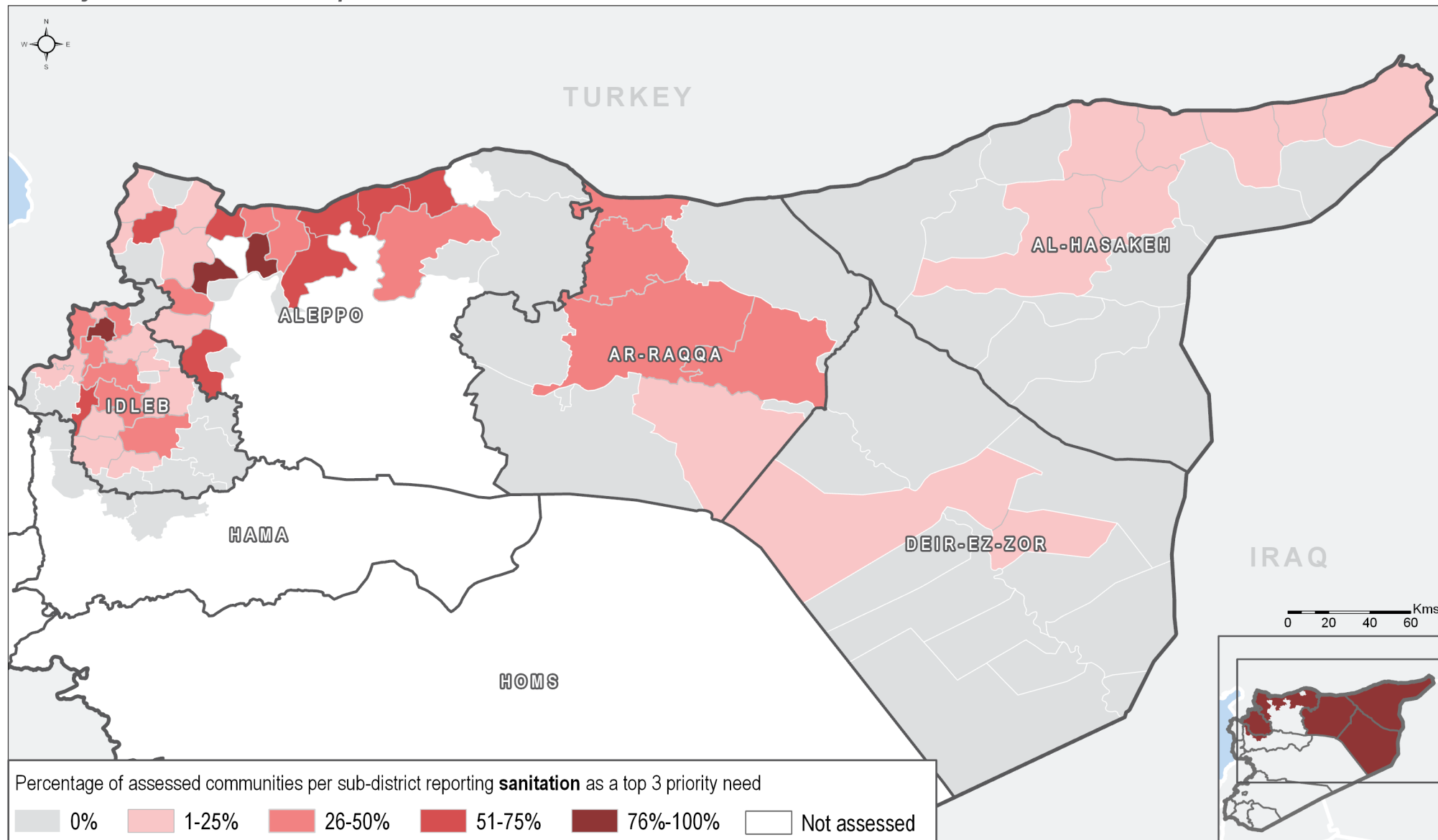
Number of assessed communities in sub-district reporting water as top 3 priority need

admin1Name	admin3Name	Water	admin1Name	admin3Name	Water	admin1Name	admin3Name	Water	admin1Name	admin3Name	Water
Al-Hasakeh	Al-Hasakeh	2/6	Aleppo	Bulbul	1/34	Ar-Raqqa	Sabka	7/10	Idleb	Badama	4/10
Al-Hasakeh	Al-Malikeyyeh	2/36	Aleppo	Daret Azza	2/25	Ar-Raqqa	Suluk	3/6	Idleb	Bennsh	0/4
Al-Hasakeh	Amuda	1/17	Aleppo	Ghandorah	15/34	Ar-Raqqa	Tell Abiad	4/26	Idleb	Dana	20/20
Al-Hasakeh	Areeshah	4/12	Aleppo	Hadher	1/1	Deir-ez-Zor	Abu Kamal	0/10	Idleb	Darkosh	0/26
Al-Hasakeh	Be'r Al-Hulo Al-Wardeyyeh	0/9	Aleppo	Haritan	0/8	Deir-ez-Zor	Al Mayadin	0/8	Idleb	Ehsem	19/19
Al-Hasakeh	Darbasiyah	0/15	Aleppo	Jandairis	0/44	Deir-ez-Zor	Ashara	0/7	Idleb	Harim	0/5
Al-Hasakeh	Hole	0/1	Aleppo	Jarablus	25/35	Deir-ez-Zor	Basira	11/14	Idleb	Heish	3/17
Al-Hasakeh	Jawadiyah	1/16	Aleppo	Ma'btali	0/25	Deir-ez-Zor	Deir-ez-Zor	3/22	Idleb	Idleb	0/15
Al-Hasakeh	Markada	3/11	Aleppo	Mare'	4/6	Deir-ez-Zor	Hajin	3/5	Idleb	Janudiyeh	4/14
Al-Hasakeh	Qahtaniyyeh	3/18	Aleppo	Menbij	10/35	Deir-ez-Zor	Jalaa	1/5	Idleb	Jisr-Ash-Shugur	6/32
Al-Hasakeh	Quamishli	2/26	Aleppo	Nabul	0/1	Deir-ez-Zor	Khasham	0/9	Idleb	Kafr Nobol	2/28
Al-Hasakeh	Ras Al Ain	0/4	Aleppo	Raju	20/50	Deir-ez-Zor	Kisreh	27/37	Idleb	Kafr Takharim	7/10
Al-Hasakeh	Shadadah	2/6	Aleppo	Sarin	0/10	Deir-ez-Zor	Muhasan	0/6	Idleb	Khan Shaykun	0/11
Al-Hasakeh	Tal Hmis	1/11	Aleppo	Sharan	9/35	Deir-ez-Zor	Sur	1/15	Idleb	Ma'arrat An Nu'man	13/38
Al-Hasakeh	Tal Tamer	0/4	Aleppo	Sheikh El-Hadid	0/13	Deir-ez-Zor	Susat	1/1	Idleb	Maaret Tamsrin	5/16
Al-Hasakeh	Ya'robiyah	0/3	Aleppo	Suran	9/25	Deir-ez-Zor	Tabni	3/13	Idleb	Mhambal	17/23
Aleppo	A'zaz	12/16	Aleppo	Zarbah	6/16	Deir-ez-Zor	Thiban	9/11	Idleb	Qourqeena	3/15
Aleppo	Abu Qalqal	5/9	Ar-Raqqa	Al-Thawrah	0/1	Hama	Kafr Zeita	0/6	Idleb	Salqin	12/24
Aleppo	Afrin	5/41	Ar-Raqqa	Ar-Raqqa	23/72	Hama	Madiq Castle	1/23	Idleb	Sanjar	1/9
Aleppo	Aghtrin	14/40	Ar-Raqqa	Ein Issa	12/19	Hama	Suran	0/1	Idleb	Saraqab	7/25
Aleppo	Ain al Arab	6/7	Ar-Raqqa	Jurneyyeh	3/42	Hama	Ziyara	0/10	Idleb	Sarmin	0/1
Aleppo	Al Bab	4/23	Ar-Raqqa	Karama	7/18	Idleb	Abul Thohur	0/5	Idleb	Tamanaah	0/5
Aleppo	Ar-Ra'ee	16/31	Ar-Raqqa	Maadan	5/5	Idleb	Ariha	29/34	Idleb	Teftnaz	0/7
Aleppo	Atareb	7/30	Ar-Raqqa	Mansura	2/17	Idleb	Armanaz	5/14			

Data source: REACH - Humanitarian Situation Overview of Syria (HSOS)

Priority Need: Sanitation - April 2019

Humanitarian Purposes Only
Production date : 02/06/2019



Data source: REACH - Humanitarian Situation Overview of Syria (HSOS)

Priority need questions were 'select up to three' so the percentages across all maps add up to more than 100%.

Priority needs reported are the perceived top 3 priority needs as reported by KIs within assessed communities and are not necessarily representative of actual priorities.

Annexes detailing the priorities reported by each assessed community are available on request.

Number of assessed communities in sub-district reporting sanitation as top 3 priority need

admin1Name	admin3Name	Hygiene	admin1Name	admin3Name	Hygiene	admin1Name	admin3Name	Hygiene	admin1Name	admin3Name	Hygiene
Al-Hasakeh	Al-Hasakeh	1/6	Aleppo	Bulbul	0/34	Ar-Raqqa	Sabka	1/10	Idleb	Badama	0/10
Al-Hasakeh	Al-Malikeyyeh	4/36	Aleppo	Daret Azza	9/25	Ar-Raqqa	Suluk	0/6	Idleb	Bennsh	1/4
Al-Hasakeh	Amuda	3/17	Aleppo	Ghandorah	19/34	Ar-Raqqa	Tell Abiad	10/26	Idleb	Dana	0/20
Al-Hasakeh	Areesheh	0/12	Aleppo	Hadher	0/1	Deir-ez-Zor	Abu Kamal	0/10	Idleb	Darkosh	3/26
Al-Hasakeh	Be'r Al-Hulo Al-Wardeyyeh	1/9	Aleppo	Haritan	0/8	Deir-ez-Zor	Al Mayadin	0/8	Idleb	Ehsem	1/19
Al-Hasakeh	Darbasiyah	0/15	Aleppo	Jandairis	0/44	Deir-ez-Zor	Ashara	0/7	Idleb	Harim	1/5
Al-Hasakeh	Hole	0/1	Aleppo	Jarablus	21/35	Deir-ez-Zor	Basira	1/14	Idleb	Heish	2/17
Al-Hasakeh	Jawadiyah	1/16	Aleppo	Ma'btali	13/25	Deir-ez-Zor	Deir-ez-Zor	1/22	Idleb	Idleb	7/15
Al-Hasakeh	Markada	0/11	Aleppo	Mare'	5/6	Deir-ez-Zor	Hajin	0/5	Idleb	Janudiyeh	1/14
Al-Hasakeh	Qahtaniyyeh	2/18	Aleppo	Menbij	9/35	Deir-ez-Zor	Jalaa	0/5	Idleb	Jisr-Ash-Shugur	0/32
Al-Hasakeh	Quamishli	1/26	Aleppo	Nabul	1/1	Deir-ez-Zor	Khasham	0/9	Idleb	Kafr Nobol	4/28
Al-Hasakeh	Ras Al Ain	0/4	Aleppo	Raju	4/50	Deir-ez-Zor	Kisreh	0/37	Idleb	Kafr Takharim	8/10
Al-Hasakeh	Shadadah	0/6	Aleppo	Sarin	0/10	Deir-ez-Zor	Muhasan	0/6	Idleb	Khan Shaykun	0/11
Al-Hasakeh	Tal Hmis	0/11	Aleppo	Sharan	1/35	Deir-ez-Zor	Sur	0/15	Idleb	Ma'arrat An Nu'man	11/38
Al-Hasakeh	Tal Tamer	0/4	Aleppo	Sheikh El-Hadid	2/13	Deir-ez-Zor	Susat	0/1	Idleb	Maaret Tamsrin	4/16
Al-Hasakeh	Ya'robiyah	0/3	Aleppo	Suran	11/25	Deir-ez-Zor	Tabni	0/13	Idleb	Mhambal	12/23
Aleppo	A'zaz	11/16	Aleppo	Zarbah	9/16	Deir-ez-Zor	Thiban	0/11	Idleb	Qourqeena	5/15
Aleppo	Abu Qalqal	0/9	Ar-Raqqa	Al-Thawrah	0/1	Hama	Kafr Zeita	0/6	Idleb	Salqin	9/24
Aleppo	Afrin	4/41	Ar-Raqqa	Ar-Raqqa	28/72	Hama	Madiq Castle	0/23	Idleb	Sanjar	0/9
Aleppo	Aghtrin	14/40	Ar-Raqqa	Ein Issa	5/19	Hama	Suran	0/1	Idleb	Saraqab	6/25
Aleppo	Ain al Arab	0/7	Ar-Raqqa	Jurneyyeh	0/42	Hama	Ziyara	0/10	Idleb	Sarmin	0/1
Aleppo	Al Bab	17/23	Ar-Raqqa	Karama	6/18	Idleb	Abul Thohur	0/5	Idleb	Tamanaah	0/5
Aleppo	Ar-Ra'ee	19/31	Ar-Raqqa	Maadan	0/5	Idleb	Ariha	17/34	Idleb	Teftnaz	0/7
Aleppo	Atareb	4/30	Ar-Raqqa	Mansura	0/17	Idleb	Armanaz	5/14			

Data source: REACH - Humanitarian Situation Overview of Syria (HSOS)

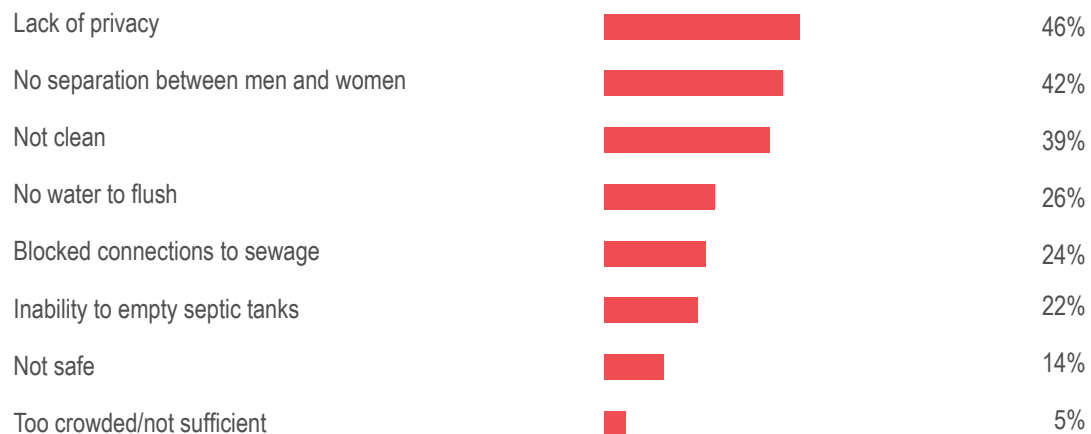
Humanitarian Situation Overview in Syria (HSOS) April 2019

WASH IN NORTHEAST SYRIA (NES)

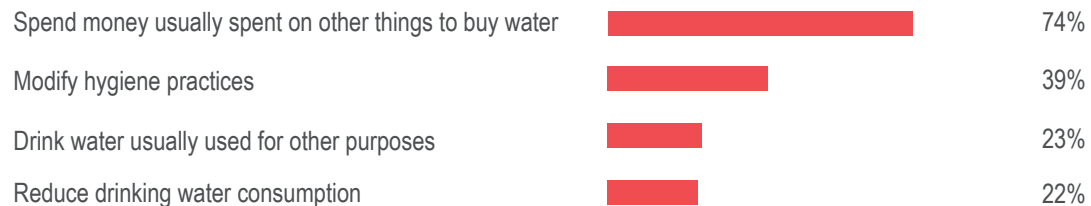
200/635 Communities reported that water from their primary source tasted and/or smelled bad.

11/635 Communities reported that drinking water from their primary source made people sick.

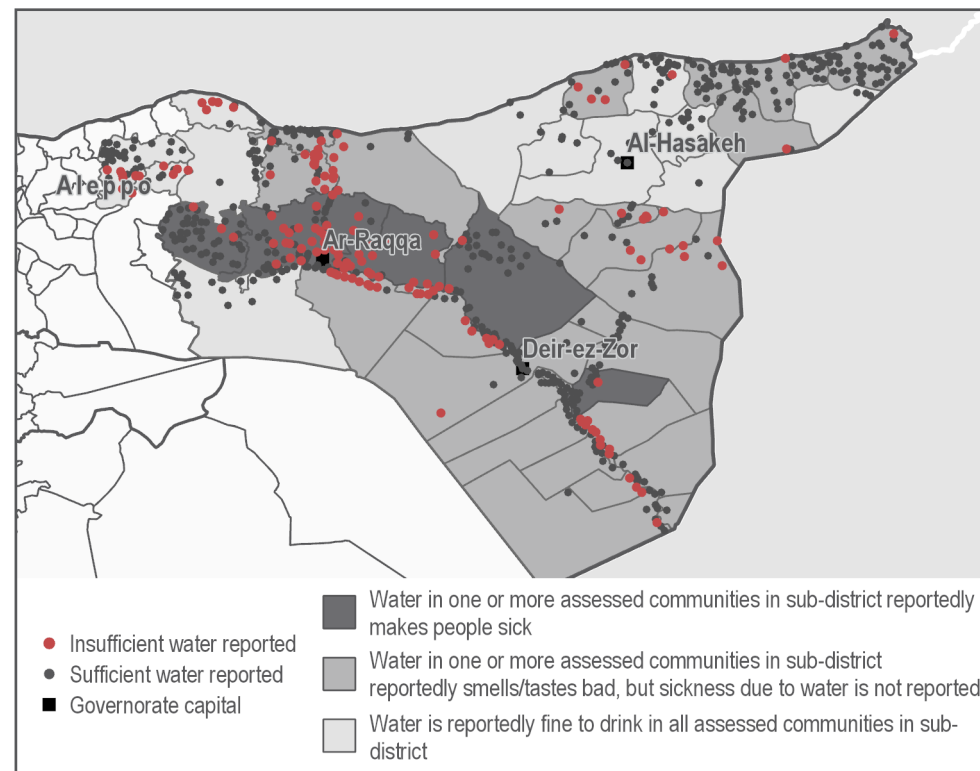
351 communities reported that residents had no problems with latrines. The most commonly reported problems with latrines in the remaining **284** assessed communities were:^{1,2,3}



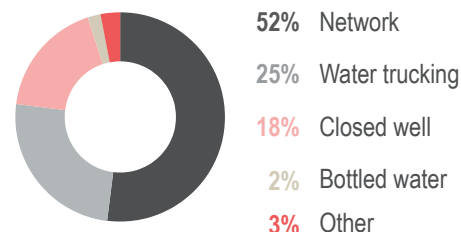
490 communities reported that they had sufficient amounts of water to meet household needs. The most common coping strategies to deal with a lack of water in the remaining **145** assessed communities were:^{1,2,3}



Communities that reported insufficient amounts of water to meet household needs:⁴



Primary drinking water source reported:²



Primary method of garbage disposal reported:^{1,2}



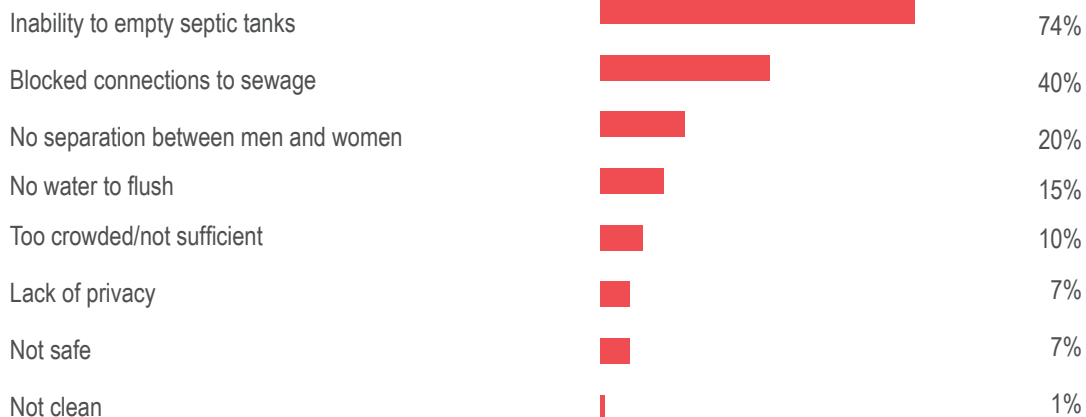
Humanitarian Situation Overview in Syria (HSOS) April 2019

WASH IN NORTHWEST SYRIA (NWS)

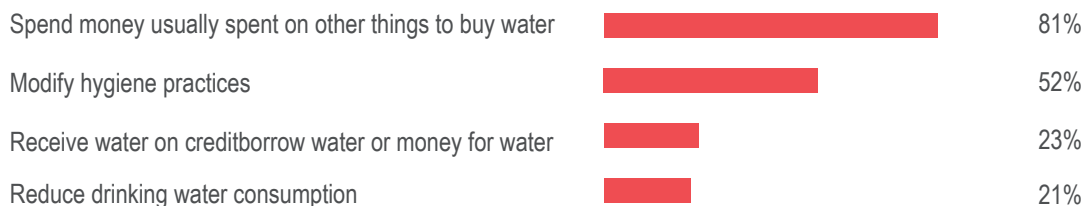
12/1000 Communities reported that water from their primary source tasted and/or smelled bad.

1/1000 Community reported that drinking water from their primary source made people sick.

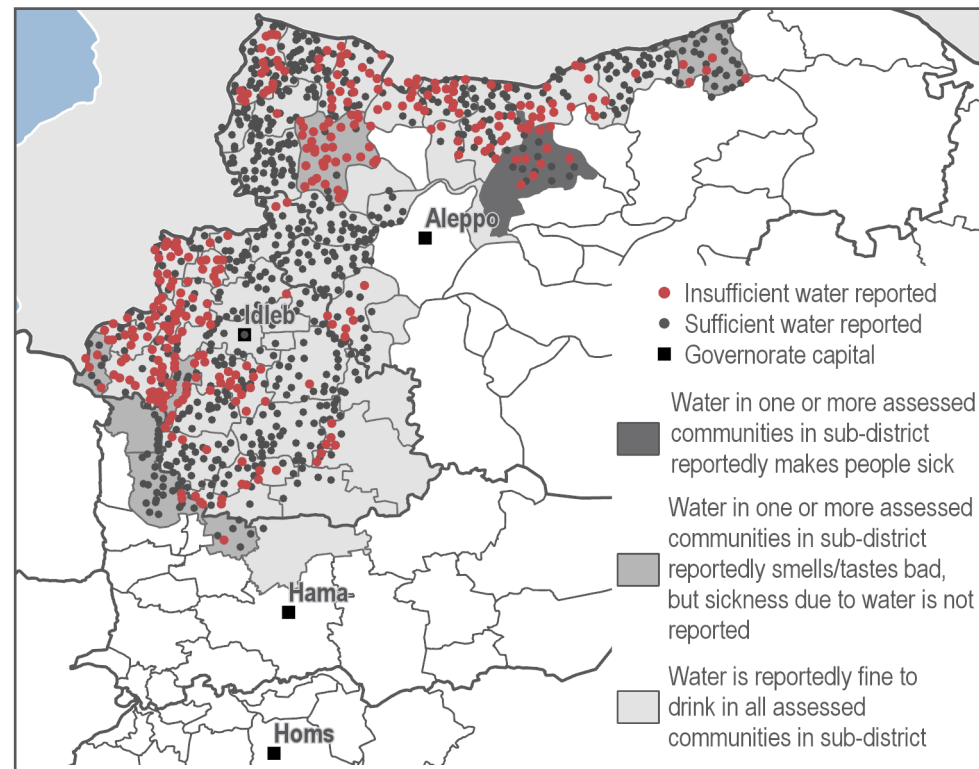
626 communities reported that residents had no problems with latrines. The most commonly reported problems with latrines in the remaining 374 assessed communities were:^{1,2,3}



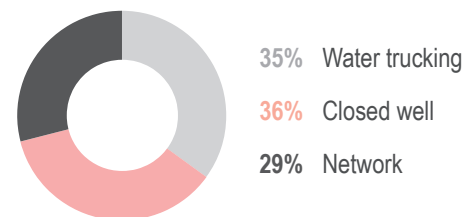
689 communities reported that they had sufficient amounts of water to meet household needs. The most common coping strategies to deal with a lack of water in the remaining 311 assessed communities were:^{1,2,3}



Communities that reported insufficient amounts of water to meet household needs:⁴



Primary drinking water source reported:²



Primary method of garbage disposal reported:^{1,2}



METHODOLOGY

HSOS data collection is conducted through an enumerator network in accessible locations throughout Idleb, Aleppo, northern Hama, Deir-ez-Zor, Ar-Raqqa, and Al-Hasakeh governorates. REACH enumerators are based inside Syria and interview Key Informants (KIs) directly in the community about which they are reporting. Where access and security constraints render direct data collection unfeasible, some KI interviews are conducted remotely through participants identified in camps and settlements in neighbouring countries by REACH field teams. Participants contact multiple KIs in their community in Syria to collect information about their community. KIs are asked to report at the community level. This factsheet presents information gathered in 1,635 communities. Data was collected during the month of May 2019, and refers to the situation in April 2019.

KIs generally included local council members, Syrian NGO workers, medical professionals, teachers, shop owners and farmers, among others, and were chosen based on their community-level or sector specific knowledge. In cases where KIs disagree on a certain piece of information, enumerators triangulate the data with secondary sources or select the response provided by the KI with the more relevant sector-specific background. For each question asked, confidence levels are assigned based on the KIs area of expertise and knowledge of the sector-specific situation. The confidence levels associated with each question are presented in the [final dataset](#). The full confidence matrix used to assign confidence levels is available upon request.

Findings are triangulated through secondary sources, including news monitoring and humanitarian reports. Where necessary, follow-up is conducted with enumerators and participants. Findings are indicative rather than representative, and should not be generalised across the region.

ENDNOTES

¹ Assessed using select multiple questions. ² By percentage of communities reporting. ³ Not all surveys have answers for every question, in these scenarios the KI or participant will input no answer. When the dataset has no answer for a particular question the reported number of assessed communities will not add up to the total number of communities assessed and percentages will be calculated based on submitted responses. ⁴ Based on KI perception of sufficiency.

About REACH

REACH facilitates the development of information tools and products that enhance the capacity of aid actors to make evidence-based decisions in emergency, recovery and development contexts. The methodologies used by REACH include primary data collection and in-depth analysis, and all activities are conducted through inter-agency aid coordination mechanisms. REACH is a joint initiative of IMPACT Initiatives, ACTED and the United Nations Institute for Training and Research - Operational Satellite Applications Programme (UNITAR-UNOSAT). For more information please visit our website: www.reach-initiative.org. You can contact us directly at: geneva@reach-initiative.org and follow us on Twitter @REACH_info.