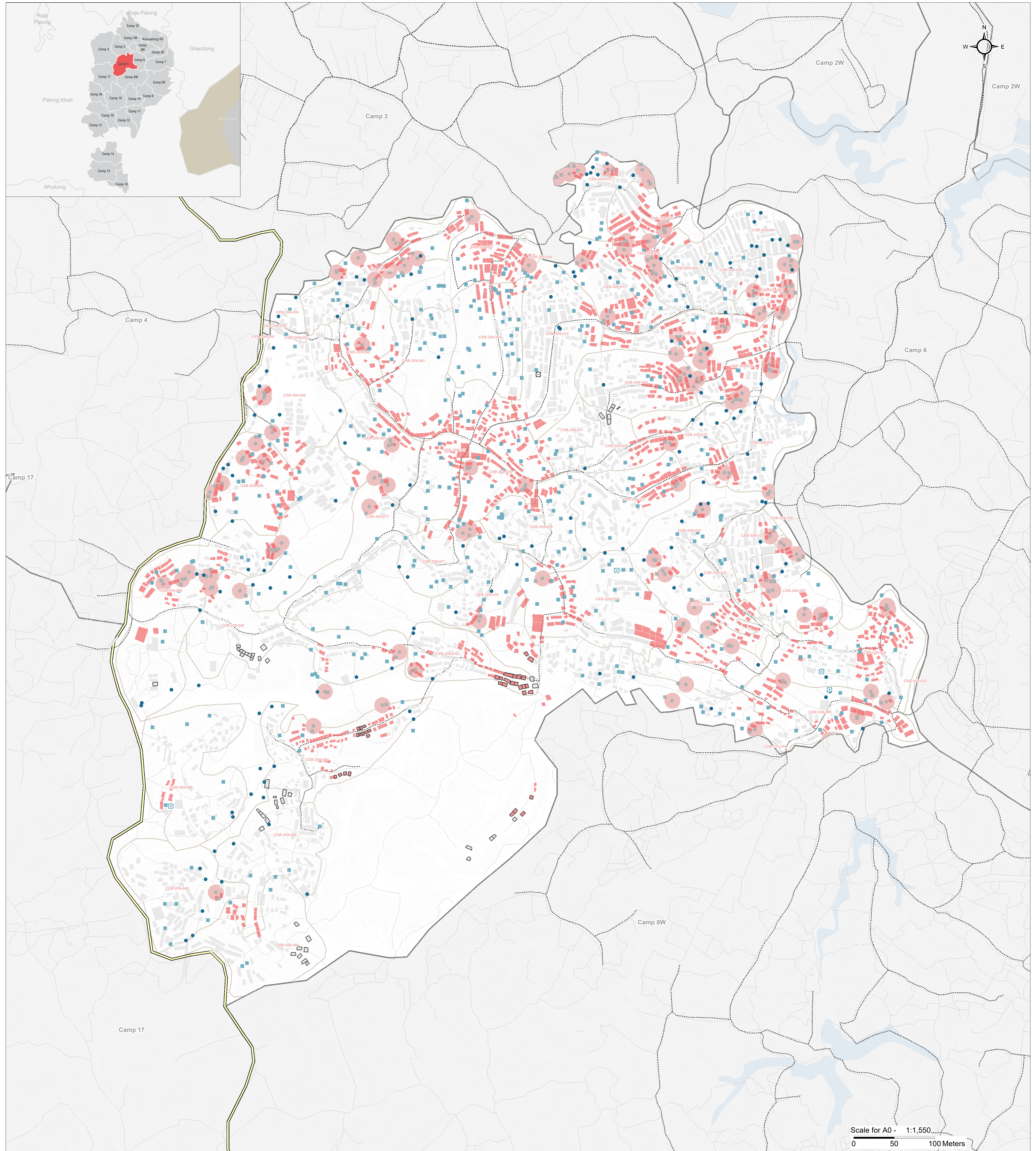


# BANGLADESH - Rohingya Refugee Crisis - Cox's Bazar District

## Camp 5 - Handpump and Tubewell Proximity to Latrines

For Humanitarian Purposes Only  
Production date: 12 April 2018



- Handpumps/Tubewells**
- Functioning handpumps/tubewells >10m to latrine (158)
  - Functioning handpumps/tubewells <=10m to latrine (116)
  - River; Water Body
  - Elevation Contours
  - 10m buffer from handpump/tubewell <10m from latrine (84)

- Shelters (Emergency Sphere distance to a latrine: 50m)**
- Shelters outside the sphere standards (82)
  - Shelter w/ nearest functioning handpump <10m from latrine (1,417)
  - Shelters nearest functioning handpump >10m from latrine (2,303)
- Sanitation**
- Functioning latrines >10m from a functioning handpump/tubewell (416)
  - Latrine <=10m from functioning handpump/tubewell (103)
  - Open defecation point (designated area) (4)
  - Decommissioned latrine (1)

- Road network**
- Highway
  - Military Road / Vehicle Road
  - Main Path
  - Footpath
  - Pathways

- Boundaries**
- Majhee Blocks (55)
  - Neighboring camps
  - Camp boundary

**Data Sources:**  
Camp Infrastructure - REACH (13/02/2018)  
Health facilities: Health Sector - Cox Bazar  
Shelter Footprints - REACH / UNOSAT (13/02/2018)  
Roads / Footpaths - ISCG / OSM / REACH  
Camp / Majhee / Admin Boundaries - ISCG / IOM / OCHA

Coordinate System: WGS 1984 UTM Zone 46N  
Projection: Transverse Mercator  
Contact: reach.mapping@impact-initiatives.org

Note: Data, designations and boundaries contained on this map are not warranted to be error-free and do not imply acceptance by the REACH partners, associates, donors mentioned on this map.



In support of the

Funded by

In partnership with