



IDP Camp Profile - Ashti IDP

Sulaymaniyah, Iraq

May 2017

Management agency: Government and YAO Organization
 Manager/Focal point: Payam Salam Hamasharif
 Phone number: 7501424646
 Email: ashticamp@hotmail.com
 Registration actor: Government and YAO Organization

Summary

This profile provides an overview of conditions in Ashti IDP camp. Primary data was collected through household surveys on 10/5/2017. Households were randomly sampled to a 95% confidence and 10% margin of error, based on population figures provided by CCCM. In some cases, additional information from camp managers has been used to support findings.

Camp Overview

of individuals: 13,476
 # of households: 2,835
 Date opened: 24/6/15
 Occupied number: 2,595
 Ongoing extension: No
 Planned capacity: 2,630
 Camp area: 710,296m²

Demographics

49% male / 51% female

1%	Over 60	1%
17%	18-59	20%
10%	12-17	11%
11%	6-11	11%
10%	0-5	8%

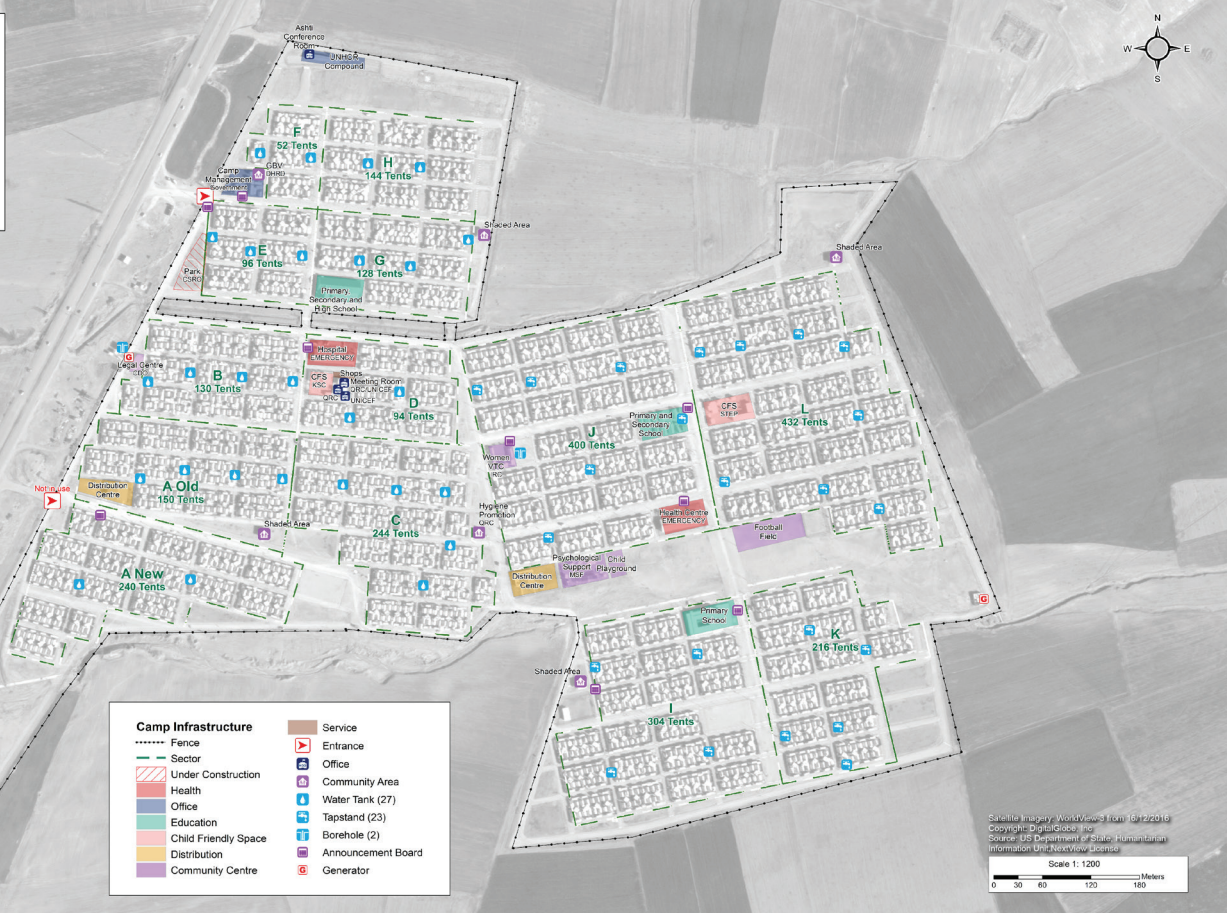
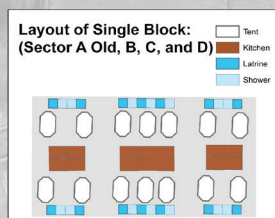
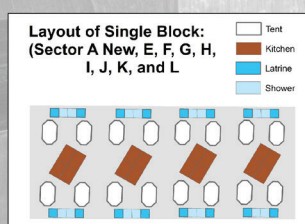


Location Map



IDP Camp Map - Ashti IDP

Lat.35° 25' 3.431" N Long. 45° 36' 21.359" E



Sectoral Minimum Standards

		Target	Previous Round	Current Round	Achievement
Education	% of children aged 6-11 attending formal school	100%	85%	68%	●
	% of children aged 12-17 attending formal school	100%	70%	61%	●
Food	% of households accessed Family Food Parcel or equivalent in the past month	100%	96%	95%	●
Health	Health services are available on-site or within walking distance	Yes	Yes	Yes	●
CCCM	Average open area per household	min. 30m ²	139m ²	220m ²	●
Protection	% of IDPs registered on an individual basis (MODM/DDM)	100%	99%	97%	●
Shelter	Average covered area per person	min 3.5m ²	6.2m ²	4.6m ²	●
	Average number of individuals per shelter	max 5	3	8	●
WASH	# of persons per latrine	max. 20	5	5	●
	# of persons per shower	max. 20	5	5	●
	Frequency of solid waste disposal at least weekly	Min. weekly	Yes	Yes	●

Targets based on minimum standards agreed with the CCCM Cluster, Iraq. Findings based on household-level data, enumerator field observations, and camp management documentation
 ● Minimum standard reached, ● More than 50% minimum standard reached, ● Less than 50% of minimum standard reached or not at all





IDP Camp Profile - Ashti IDP

Sulaymaniyah, Iraq

May 2017

Management agency: Government and YAO Organization
 Manager/Focal point: Payam Salam Hamasharif
 Phone number: 7501424646
 Email: ashticamp@hotmail.com
 Registration actor: Government and YAO Organization

Shelter

Top observed shelter type

Tent 99%

Top reported needed shelter items

Sun shading net 85%

Tarpaulin 77%

Timber 37%

Top reported needed basic items

Mattresses 92%

Blankets 76%

Cooking fuel 56%

Top reported needed winter item

Clothes 77%

Top reported needed summer item

Rechargeable fan 83%

Food Security

Reported access to food assistance

93% accessed food assistance in past month

56% received Public Distribution System (PDS) in past month

Top three food consumption coping strategies

Cheaper food 93%

Borrowed food 43%

Eat fewer meals 26%

WASH

Latrines and showers

35% reported public or communal latrines

35% public/communal latrines lockable from the inside

34% public/communal latrines with functioning lighting

Top three reported methods of waste removal

Collected 100%

n/a n/a

n/a n/a

Reported drinking water sources

100% connection inside the home to collective water storage

0% connection inside the home to private water storage

0% communal water tap outside the shelter

Access to water

0% reported 24 consecutive hours without access to water in the past month

Community Organisation

IDP committees

100% reported awareness of IDP committee(s)

Complaints mechanism

16% made a complaint about conditions or assistance

Protection

Family Separation

1% reported hosting unaccompanied or separated minors

4% reported that other family members intended to join them

Vulnerable groups

Pregnant / lactating women 3%

Chronically ill individual(s) 7%

Disabled individual(s) 4%

Female headed households 8%

Intentions

4% planned to move to a different location in next 3 months

Restrictions

100% reported being able to leave the camp temporarily (e.g. to go to the market, for livelihood opportunities)

Livelihoods

8% reported as being economically inactive

Top three income sources*:

Unskilled labour 45%

Low skilled service 13%

Unskilled agricultural labour 11%

*Households were asked to select all income sources within household.

Top three reported livelihood coping strategies

Reduce spending 52%

Support from friends 35%

Debt 23%

