



# IDP Camp Profile - Checkpoint 75

Baghdad, Iraq  
August 2016

Management agency: Dr Wathab Shaker  
Manager/Focal point: Muhammad Hameed Waly  
Phone number: 7811661111  
Email: n/a  
Registration actor: Camp management

## Summary

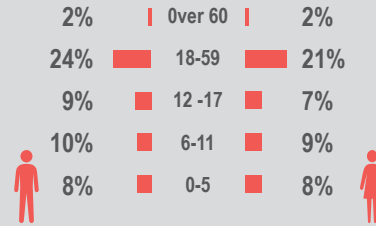
This profile provides an overview of conditions in Checkpoint 75 camp. Primary data was collected through household surveys on 26-08-16. Households were randomly sampled to a 95% confidence and 10% margin of error, based on population figures provided by CCCM. In some cases, additional information from camp managers has been used to support findings. Round V of data collection was in April 2016.

## Camp Overview

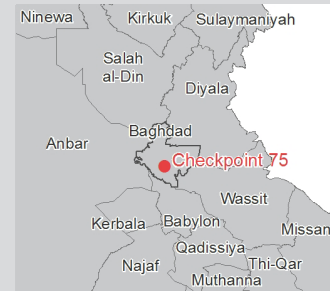
# of individuals: 160  
# of households: 30  
Date opened: 10-04-15  
Occupied number: 50  
Ongoing extension: No  
Planned capacity: 62  
Camp area: 13,020

## Demographics

53% male / 47% female

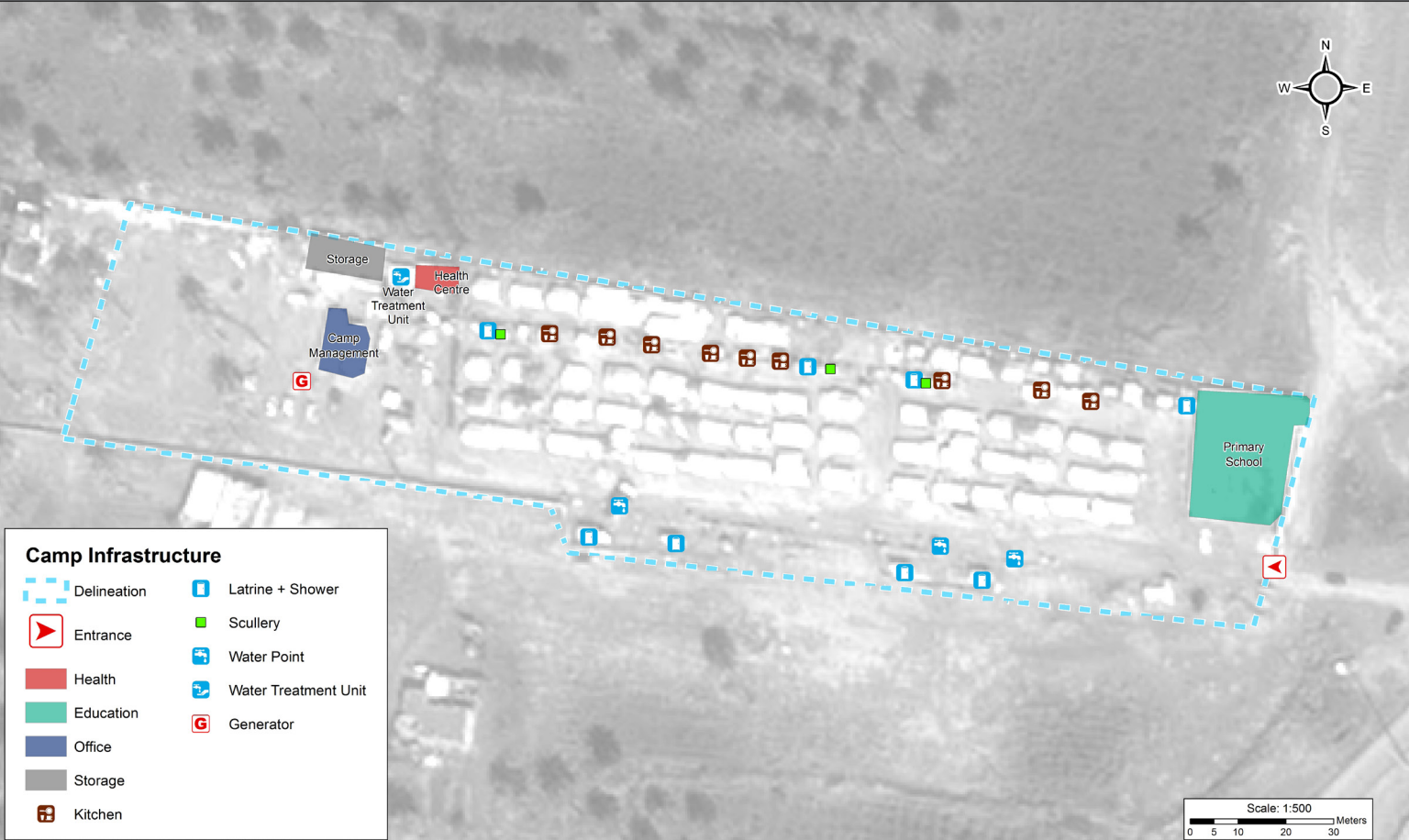


## Location Map



## IDP Camp Map - Checkpoint 75

Lat. 33° 7' 45.893" N Long. 44° 21' 30.621" E



## Sectoral Minimum Standards

		Target	Previous Round	Current Round	Achievement
Education	% of children aged 6-11 attending formal school	100%	92%	91%	●
	% of children aged 12-17 attending formal school	100%	64%	75%	●
Food	% of households accessed Family Food Parcel or equivalent in the past month	100%	100%	81%	●
Health	Health services are available on-site or within walking distance	Yes	Yes	Yes	●
CCCM	Average open area per household	min. 30m <sup>2</sup>	n/a*	359m <sup>2</sup>	●
Protection	% of IDPs registered on an individual basis (MODM/DDM)	100%	100%	98%	●
	% of households accessed shelter assistance since arrival at the camp	100%	94%	42%	●
	Average covered area per person	min. 3.5m <sup>2</sup>	n/a*	4.6m <sup>2</sup>	●
Shelter	Average number of individuals per shelter	max.5	6	3	●
	# of persons per latrine	max. 20	19	10	●
	# of persons per shower	max. 20	25	9	●
WASH	Frequency of solid waste disposal at least weekly	min. weekly	Yes	Yes	●

\*GPS tracking of camp infrastructure was not possible this round due to restrictions from authorities. Area calculations subsequently could not be determined.

Targets based on minimum standards agreed with the CCCM Cluster, Iraq. Findings based on household-level data, enumerator field observations, and camp management documentation

● Minimum standard reached, ● More than 50% minimum standard reached, ● Less than 50% of minimum standard reached or not at all





# IDP Camp Profile - Checkpoint 75

Baghdad, Iraq  
August 2016

Management agency: Dr Wathab Shaker  
Manager/Focal point: Muhammad Hameed Waly .  
Phone number: 7811661111  
Email: n/a  
Registration actor: Camp management

## Shelter

### Top three observed shelter types\*

Permanent structure	100%	<div></div>
n/a	n/a	
n/a	n/a	

\*Households were asked to select all shelter typologies within household.

### Winterisation and NFI items

69%	reported a second fly sheet
85%	reported access to a heater
92%	reported at least one blanket per person
92%	reported at least one mattress per person
1.4	average number of carpets
35%	reported shelter provides warmth in winter

### Hazards

27%	reported exposed electrical cables at site
-----	--

### Shelter Improvement

0%	reported making own improvements to their shelter
----	---

## Community Organisation

### IDP committees

100%	reported awareness of IDP committee(s)
------	--

### Complaints mechanism

100%	reported awareness of complaints mechanism
------	--

## Protection

### Family Separation

0%	reported hosting unaccompanied or separated minors
0%	reported that other family members intended to join them

### Vulnerable groups

Pregnant / lactating women	4%	<div></div>
Chronically ill individual(s)	4%	<div></div>
Disabled individual(s)	0%	
Female headed households	4%	<div></div>

### Intentions

23%	planned to move to a different location in next 3 months
-----	--

### Restrictions

12%	reported entry or exit restrictions during daylight hours
-----	---

## Food Security and Coping Strategies

### Reported access to food assistance

81%	accessed food assistance in past month
81%	received Public Distribution System (PDS) in past month

### Top three food consumption coping strategies

Cheaper	50%	<div></div>
Borrowed	35%	<div></div>
Less meals	4%	<div></div>

### Top three reported livelihood coping strategies

Support from Family	27%	<div></div>
Charitable Donations	27%	<div></div>
Spent savings	19%	<div></div>

## WASH

### Latrines and showers

100%	reported public or communal latrines
100%	public/communal latrines lockable from the inside
69%	public/communal latrines with functioning lighting

### Top three reported methods of waste removal

Collected	50%	<div></div>
Throw in street	27%	<div></div>
Communal bin	23%	<div></div>

### Reported drinking water sources

0%	connection inside the home to collective water storage
0%	connection inside the home to private water storage
100%	communal water tap outside the shelter

### Access to water

0%	reported 24 consecutive hours without access to water in the past month
----	---

## Household Income

8%	reported as being economically inactive
----	---

### Top three income sources\*:

Humanitarian Aid	27%	<div></div>
Government Pension	15%	<div></div>
Self-employed	12%	<div></div>

\*Households were asked to select all income sources within household.