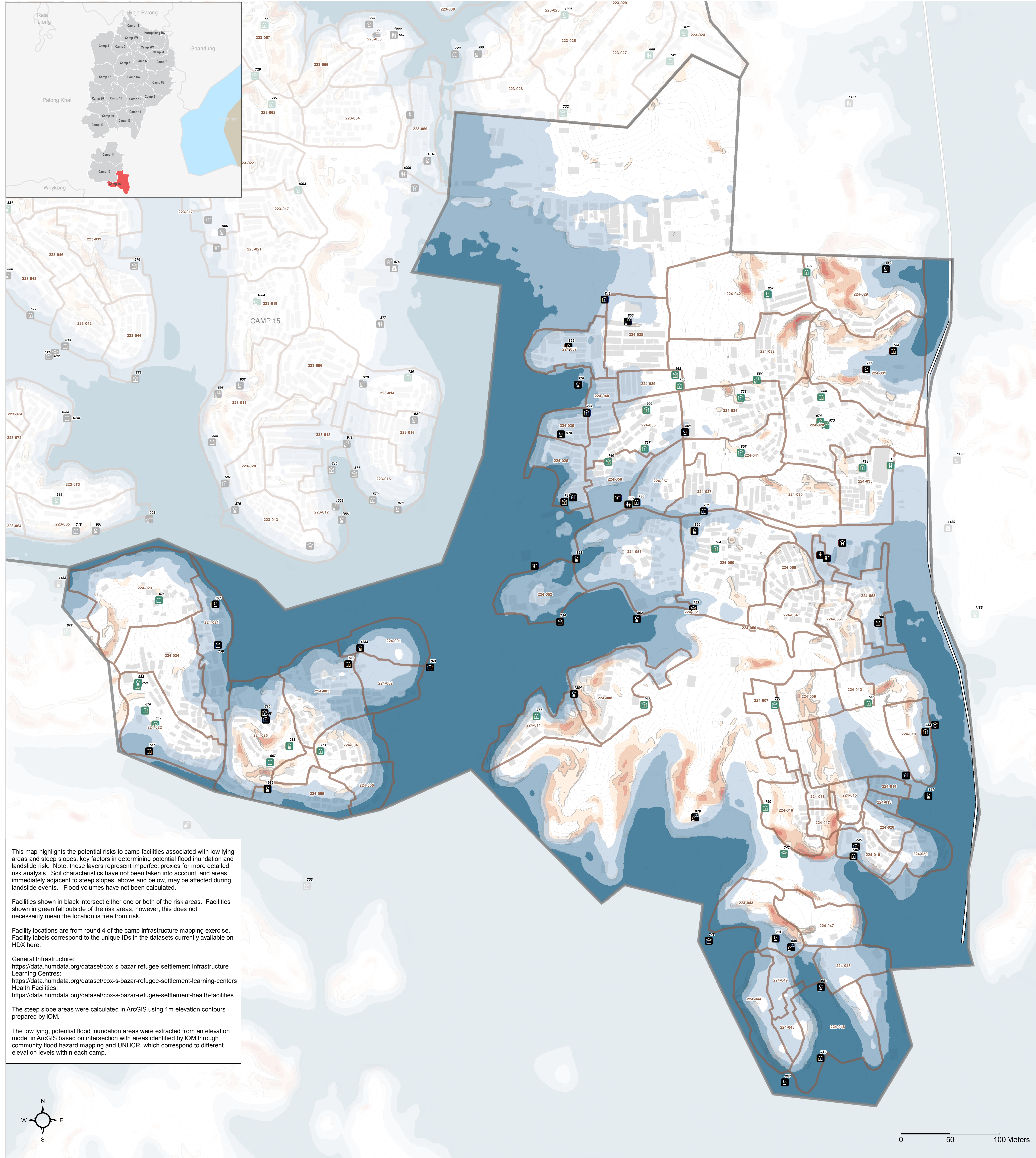


BANGLADESH - Rohingya Refugee Crisis - Cox's Bazar District

Camp 16 - Potential Flood Inundation and Slope Risk

For Humanitarian Purposes Only
Production date: 6 April 2018



- Facilities Not Within Hazard Areas**
- Child Friendly Space
 - Women Friendly Space
 - Community Centre
 - Info Hub
 - Distribution Center
 - Field Office
 - Mosque
 - Madrasah
 - Learning Centre
 - Health Centre
 - Clinic
 - Treatment Centre (Diarrhea/Diphtheria)
 - Health Post (fixed)
 - Health Post (mobile)
 - Diagnostic Point
 - Labour Room

- Facilities Within Hazard Areas**
- Child Friendly Space
 - Women Friendly Space
 - Community Centre
 - Info Hub
 - Distribution Center
 - Field Office
 - Mosque
 - Madrasah
 - Learning Centre
 - Health Centre
 - Clinic
 - Treatment Centre
 - Health Post (fixed)
 - Health Post (mobile)
 - Diagnostic Point
 - Labour Room

- Steep Slope Areas**
- > 40 degrees
 - 35 - 40 degrees
 - 30 - 35 degrees
 - 25 - 30 degrees
 - 20 - 25 degrees
- Other Features**
- Elevation Contours (1m)
 - Shelter Footprints
 - Majhee Blocks
 - Camp Boundaries
 - Highway
 - Military Road / Vehicle Road
 - Main Path
 - Footpath

- Low Lying Areas**
- Potential Inundation to 10m Elevation
 - Potential Inundation to 12m Elevation
 - Potential Inundation to 14m Elevation

Data Sources:
Camp Facilities - REACH / Health Sector
Steep Slopes - REACH
Low Lying Areas - REACH
Community Flood Hazard - IOM / UNHCR
Elevation Contours - IOM
Shelter Footprints - REACH / UNOSAT
Roads / Footpaths - ISCG / REACH
Camp / Majhee / Admin Boundaries - ISCG / IOM / OCHA

Coordinate System: WGS 1984 UTM Zone 46N
Projection: Transverse Mercator
Contact: reach.mapping@impact-initiatives.org

Note: Data, designations and boundaries contained on this map are not warranted to be error-free and do not imply acceptance by the REACH partners, associates, donors mentioned on this map.

In support of the

WASH Sector
Cox's Bazar

Funded by

unicef

In partnership with

UNOSAT