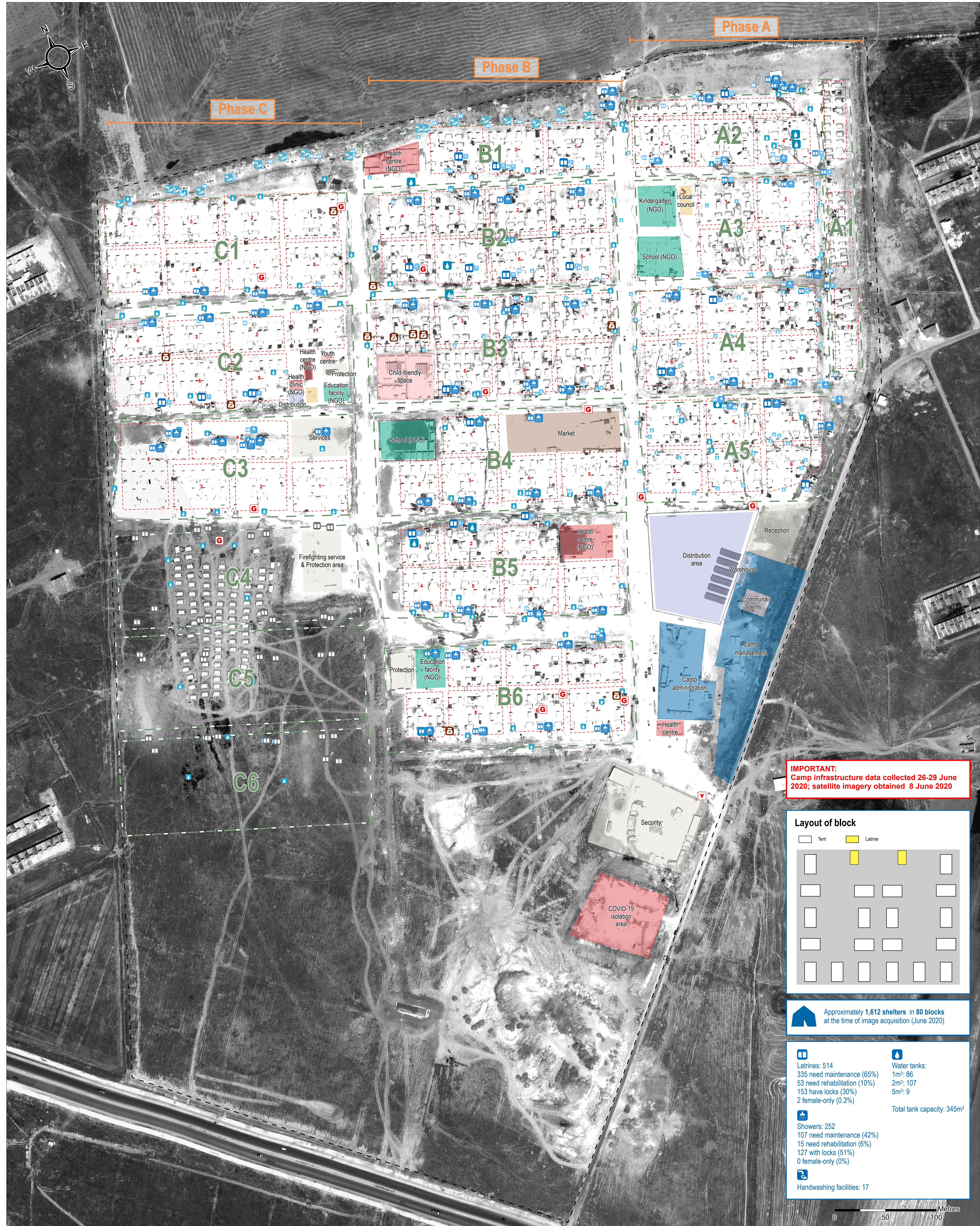


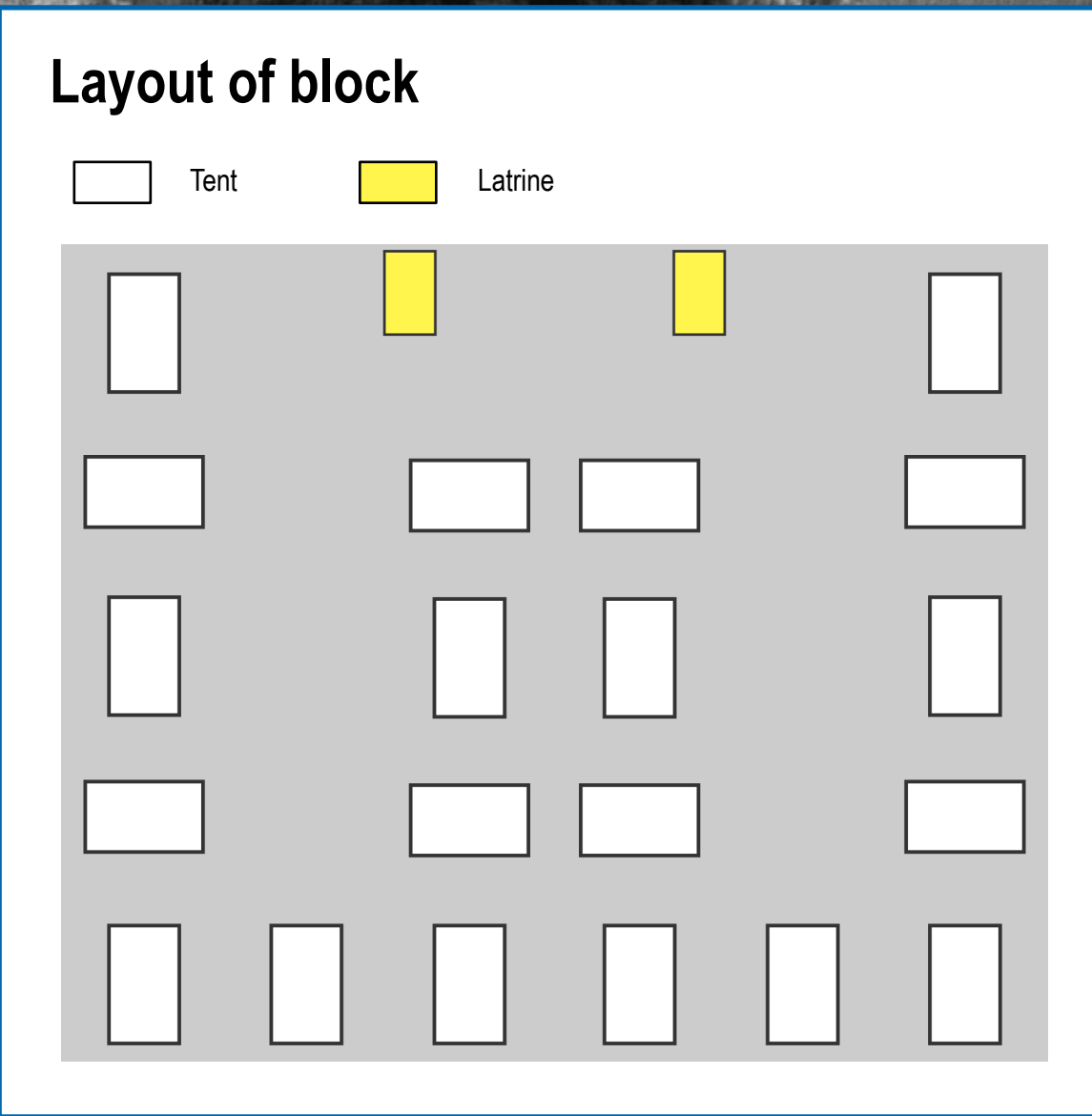
SYRIA - Washokani Informal IDP Camp

General Infrastructure - As of July 2020

For Humanitarian Purposes Only
Production date : 20 August 2020



IMPORTANT:
Camp infrastructure data collected 26-29 June 2020; satellite imagery obtained 8 June 2020



Approximately 1,612 shelters in 80 blocks at the time of image acquisition (June 2020)

<p>Latrines: 514 335 need maintenance (65%) 53 need rehabilitation (10%) 153 have locks (30%) 2 female-only (0.3%)</p>	<p>Water tanks: 1m³: 86 2m³: 107 5m³: 9 Total tank capacity: 345m³</p>
<p>Showers: 252 107 need maintenance (42%) 15 need rehabilitation (6%) 127 with locks (51%) 0 female-only (0%)</p>	<p>Handwashing facilities: 17</p>



General infrastructure		Sanitation infrastructure	
Block	Entrance	Camp management	School
Sector	Generator	Community	Service
Boundary	Shop	Distribution	Storage
		Health	CFS
		Market	Security
		Mass tent	
		1-3 Latrines	1 Shower
		4-8 Latrines	2-6 Showers
		10+ Latrine	8+ Showers
		Latrines under construction	
		1m ³	
		2m ³	
		5m ³	
		1 handwashing station	

Data Sources:
Infrastructure: REACH
Satellite Imagery: GeoEye-1 from 8 June 2020
Copyright: © 2020 DigitalGlobe
Source: US Department of State, Humanitarian Information Unit, NextView license
File name: REACH_SYR_Map_Washokani_CAMP_July20_A0

Contact: mena.reach@impact-initiatives.org
Projection: WGS 1984 UTM 37N

Note: Data, designations and boundaries contained on this map are not warranted to be error-free and do not imply acceptance by the REACH partners, associated, donors mentioned on this map.