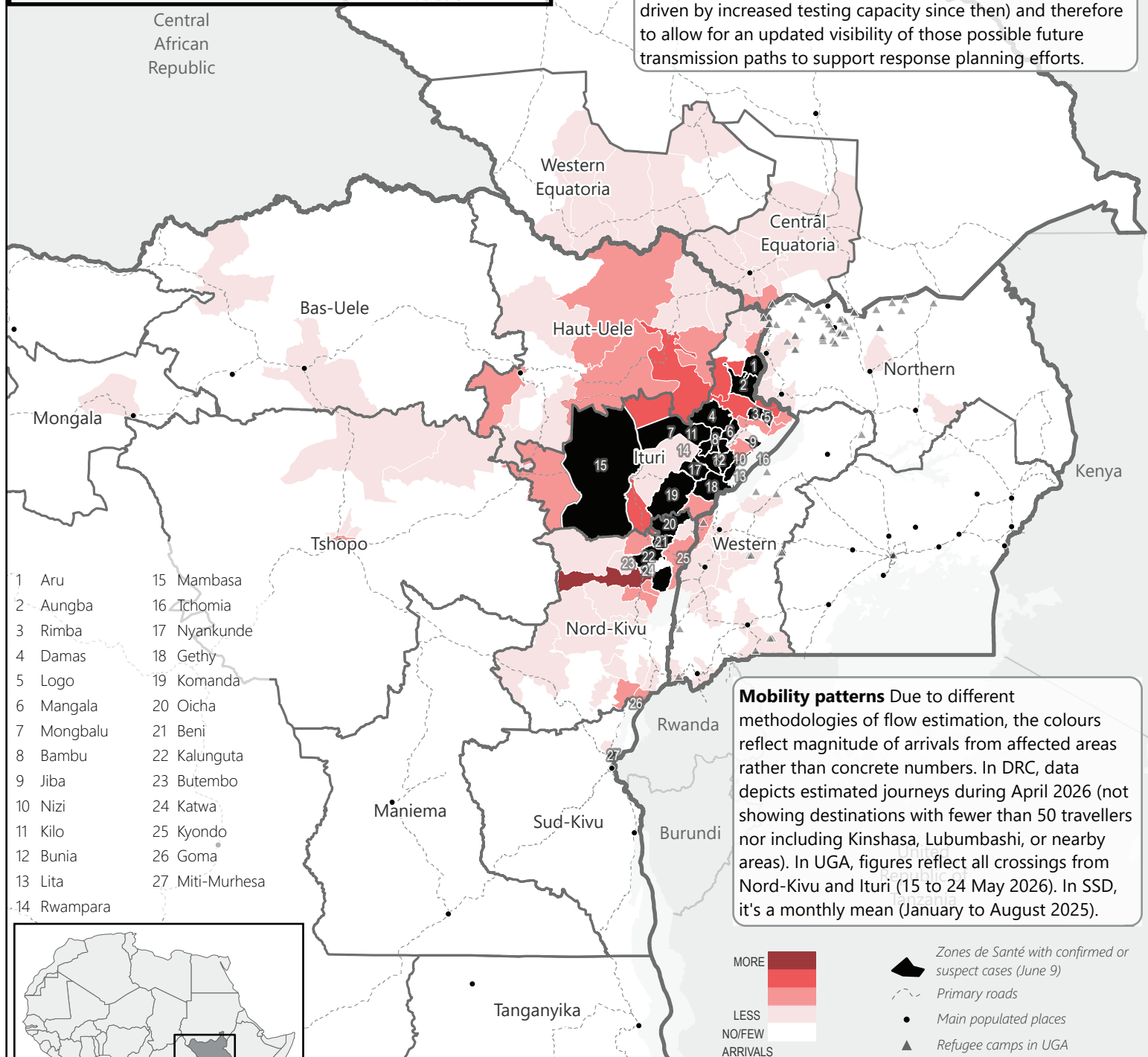


WHO declared a Public Health Emergency of International Concern (PHEIC) on 17 May 2026 in response to the recent outbreak of Ebola Virus disease caused by Bundibugyo virus in Ituri Province of Democratic Republic of Congo. As of 9 June 2026, there are 1614 total suspected (979) and confirmed (635) cases, and 369 suspected and confirmed deaths. Delayed identification of the outbreak has led to concerns the outbreak may have already spread widely in the community. In response to this, REACH conducted an initial analysis of available mobility and key population-level health indicators to identify potential areas of concern in the coming weeks.

This set of maps attempts to highlight areas of potential risk for Ebola transmission at a regional level based on available historical mobility data (this and next page) and several population-based survey indicators as proxies for health system access (next page). This is an update from the first set of maps produced by REACH on May 28 (for restricted dissemination only) to take into account the rapid increase in confirmed cases and new affected health zones (primarily driven by increased testing capacity since then) and therefore to allow for an updated visibility of those possible future transmission paths to support response planning efforts.



Mobility patterns Due to different methodologies of flow estimation, the colours reflect magnitude of arrivals from affected areas rather than concrete numbers. In DRC, data depicts estimated journeys during April 2026 (not showing destinations with fewer than 50 travellers nor including Kinshasa, Lubumbashi, or nearby areas). In UGA, figures reflect all crossings from Nord-Kivu and Ituri (15 to 24 May 2026). In SSD, it's a monthly mean (January to August 2025).

Sources: Movement: Flowminder (DRC), DTM Flow Monitoring Registry (IOM SSD), DTM Flow Monitoring Registry (IOM UGA May 26) - Ebola data: Institut National de Santé Publique (INSP), Democratic Republic of the Congo SitRep MVE (maladie à virus Ebola), 2026 - Refugee camps: Refugee camps and other people of concern's locations (UNHCR GIS DATA) - Roads: OSM Contributors, HOTOSM - Administrative features: fieldmaps.io, OCHA, NaturalEarth - Populated places: NaturalEarth

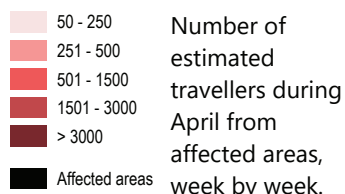
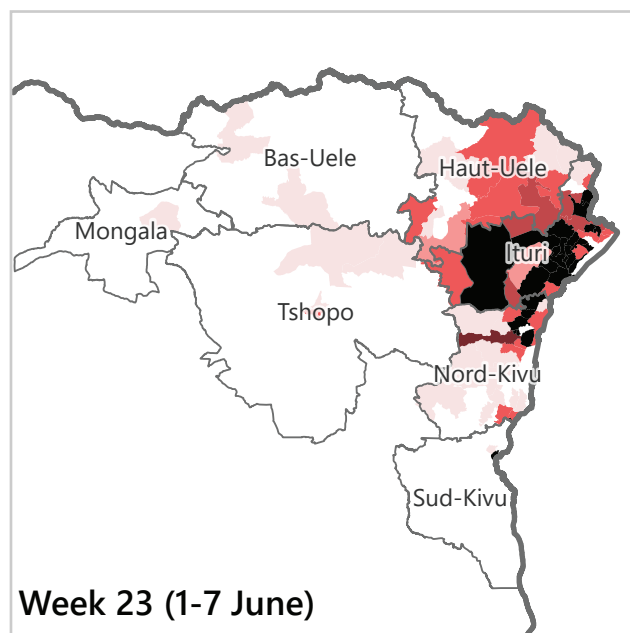
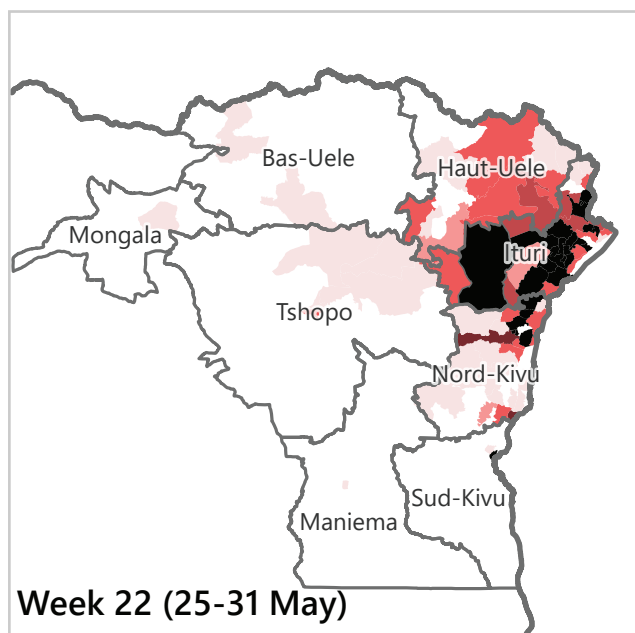
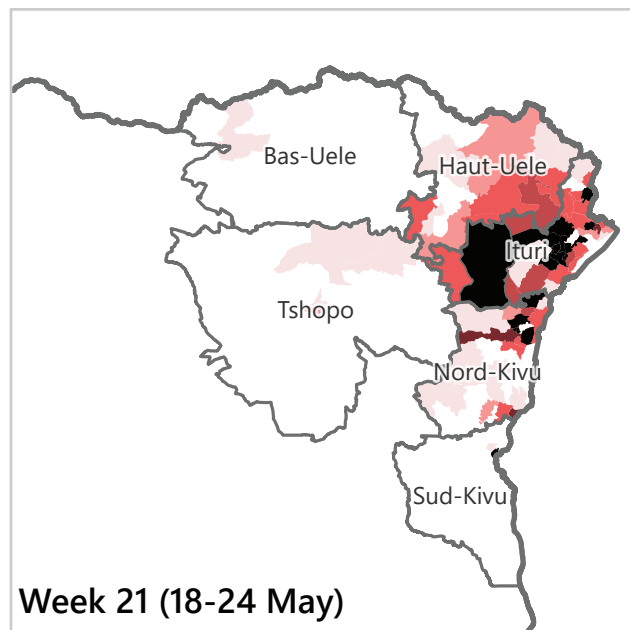
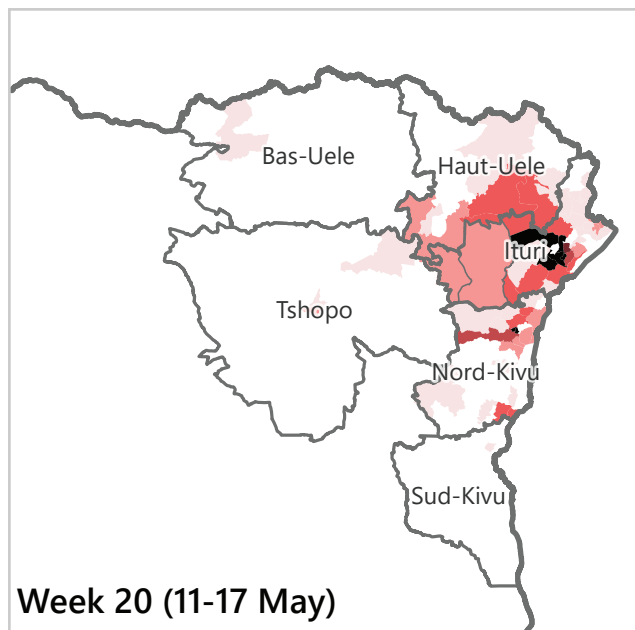
Coordinate System: WGS 1984 Web Mercator Auxiliary Sphere
 File: REACH_COD_Map_RegionalOverviewMobility_20260611_A4
 Contact: impact.geneva.mapping@impact-initiatives.org

Note: Data, designations and boundaries contained on this map are not warranted to be error-free and do not imply acceptance by REACH partners, associates or donors mentioned on this map.

Evolution of Ebola-affected areas and mobility patterns - June 2026

The four maps below illustrate the spatial progression of Ebola-affected areas between May 14 and 9 June, highlighting how the geographic spread of confirmed cases has evolved over time.

Only destinations with more than 50 estimated travellers during April 2026 are shown, and Lubumbashi and Kinshasa are not included. Affected areas are those Zones de Santé with suspected or confirmed cases aggregated by week.



week	date	nom
20	14/05/2026	Mongbalu
20	15/05/2026	Bunia
20	15/05/2026	Rwampara
20	18/05/2026	Butembo
20	18/05/2026	Goma
20	18/05/2026	Katwa
20	18/05/2026	Nyankunde
20	20/05/2026	Bambu
21	21/05/2026	Kilo
21	21/05/2026	Miti-Murhesa

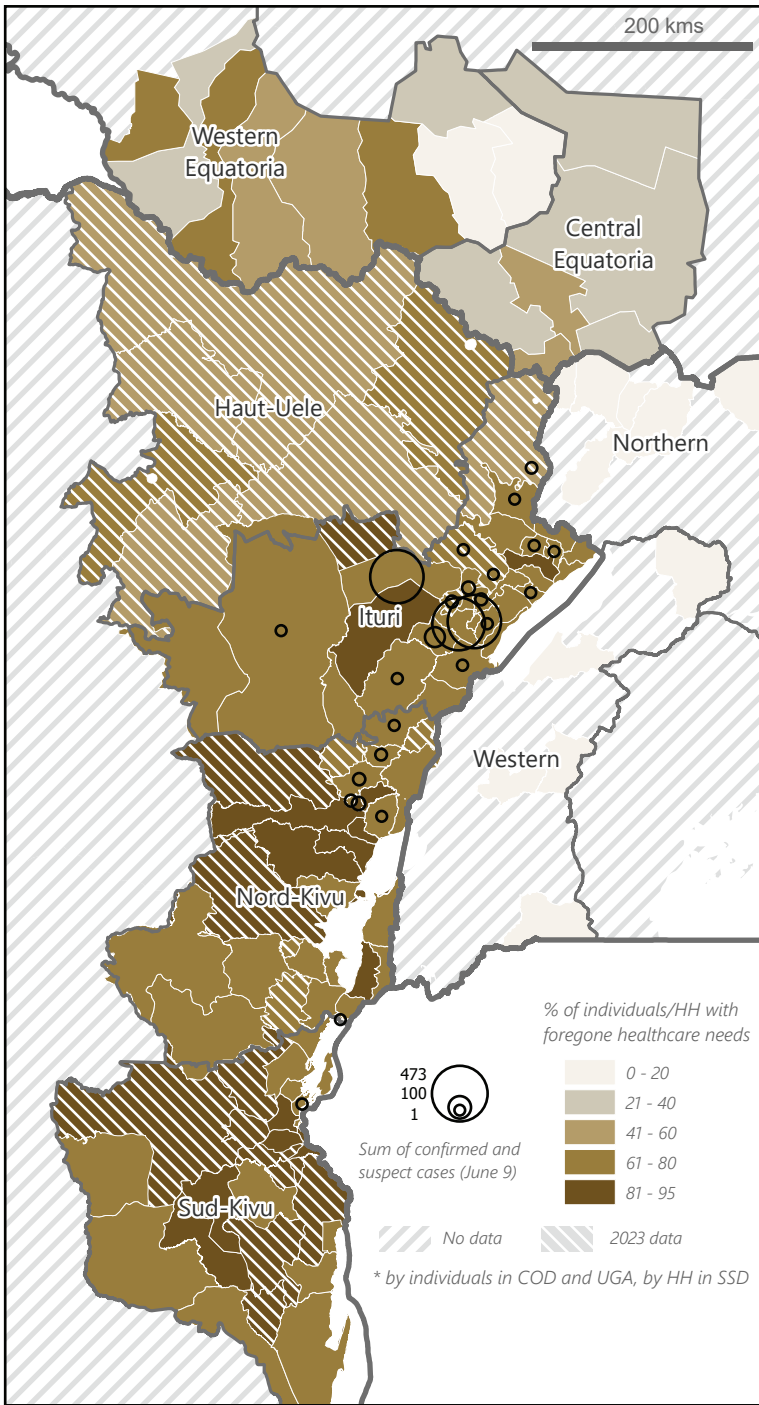
week	date	nom
21	21/05/2026	Nizi
21	22/05/2026	Aru
21	24/05/2026	Kalunguta
21	24/05/2026	Oicha
21	25/05/2026	Karisimbi
21	25/05/2026	Kyondo
21	26/05/2026	Damas
21	26/05/2026	Fataki
21	26/05/2026	Mambasa
21	26/05/2026	Rimba

week	date	nom
22	28/05/2026	Aungba
22	28/05/2026	Beni
22	28/05/2026	Gethy
22	28/05/2026	Jiba
22	28/05/2026	Komanda
22	28/05/2026	Lita
22	28/05/2026	Mangala
22	01/06/2026	Logo
23	09/06/2026	Tchomia

Sources: Ebola data: Institut National de Santé Publique (INSP), Democratic Republic of the Congo SitRep MVE (maladie à virus Ebola), 2026 - Population movement: Flowminder - Administrative features: fieldmaps.io, OCHA

Note: Data, designations and boundaries contained on this map are not warranted to be error-free and do not imply acceptance by REACH partners, associates or donors mentioned on this map.

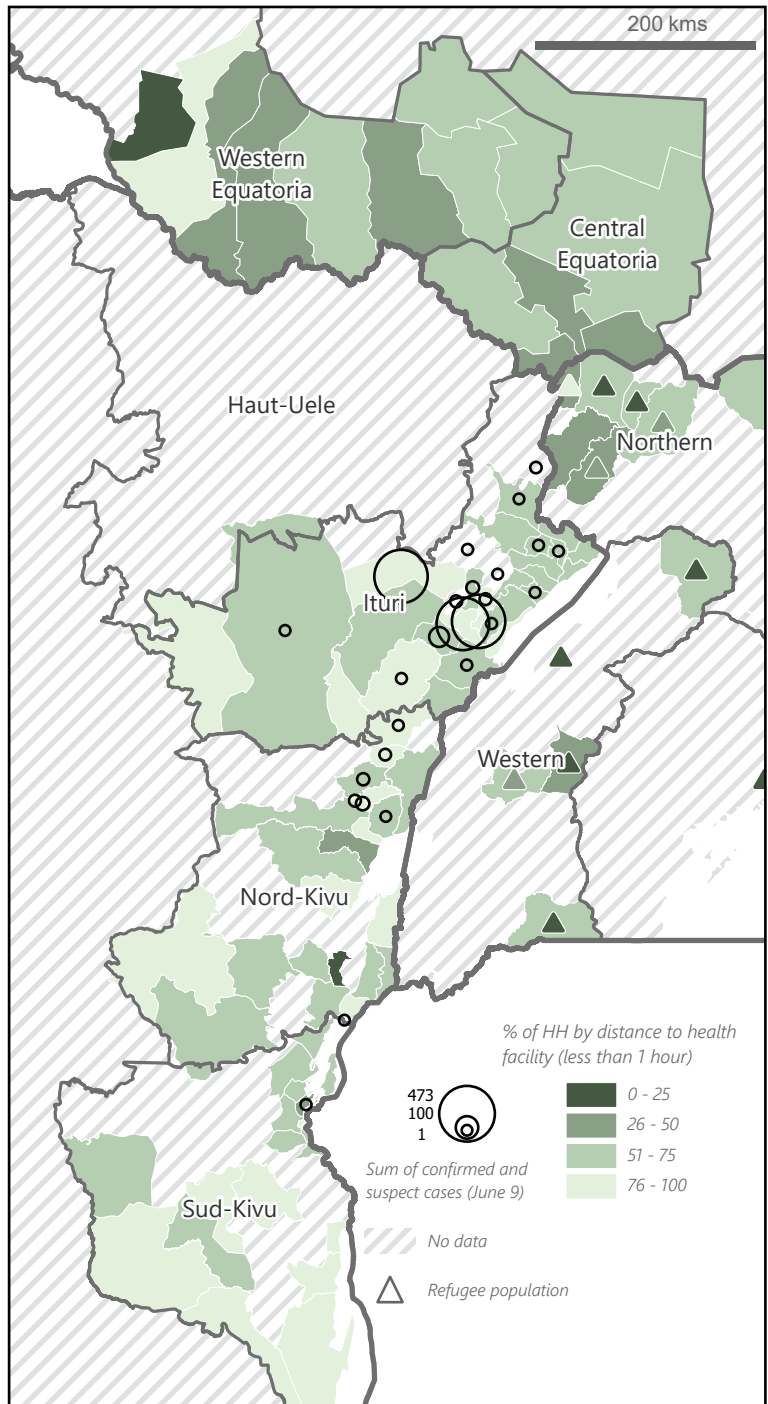
Regional overview: health access vulnerabilities - June 2026



Health System Vulnerabilities Health systems with poor access for the population may result in delays in care seeking and case identification. The following datasets were used: for DRC the 2025 Multi-Sectoral Needs Assessment (MSNA) and, when not available, the 2023 Emergency Food Security Assessment (EFSA) / MSNA; for UGA camps and host communities the 2024 MSNA; and the Intersectoral Needs Assessment (ISNA) from 2025 was used for South Sudan.

Foregone Care This indicator reflects the proportion of individuals/households who had a health care need in the three months prior to data collection and were not able to access services. In DRC and Uganda this indicator as calculated as a proportion of individuals, and in the South Sudan ISNA as a proportion of households with at least one individual with a health care need that was not met.

Timely Access to Health Facilities This indicator reflects the proportion of households that can access the nearest functional health facility within one hour of travel time. It serves as a proxy for physical accessibility and availability of services for the population.



Sources: Ebola data: Institut National de Santé Publique (INSP), Democratic Republic of the Congo SitRep MVE (maladie à virus Ebola), 2026 - Health: 2025 MSNA (DRC), 2025 Intersectoral Needs Assessment (SSD), 2024 MSNA (UGA), 2023 EFSA/MSNA (WFP/IMPACT Initiatives; DRC) - Administrative features: fieldmaps.io, OCHA, NaturalEarth



Coordinate System: WGS 1984 Web Mercator Auxiliary Sphere
 File: REACH_COD_Map_RegionalOverviewHealth_20260611_A4
 Contact: impact.geneva.mapping@impact-initiatives.org

Note: Data, designations and boundaries contained on this map are not warranted to be error-free and do not imply acceptance by REACH partners, associates or donors mentioned on this map.