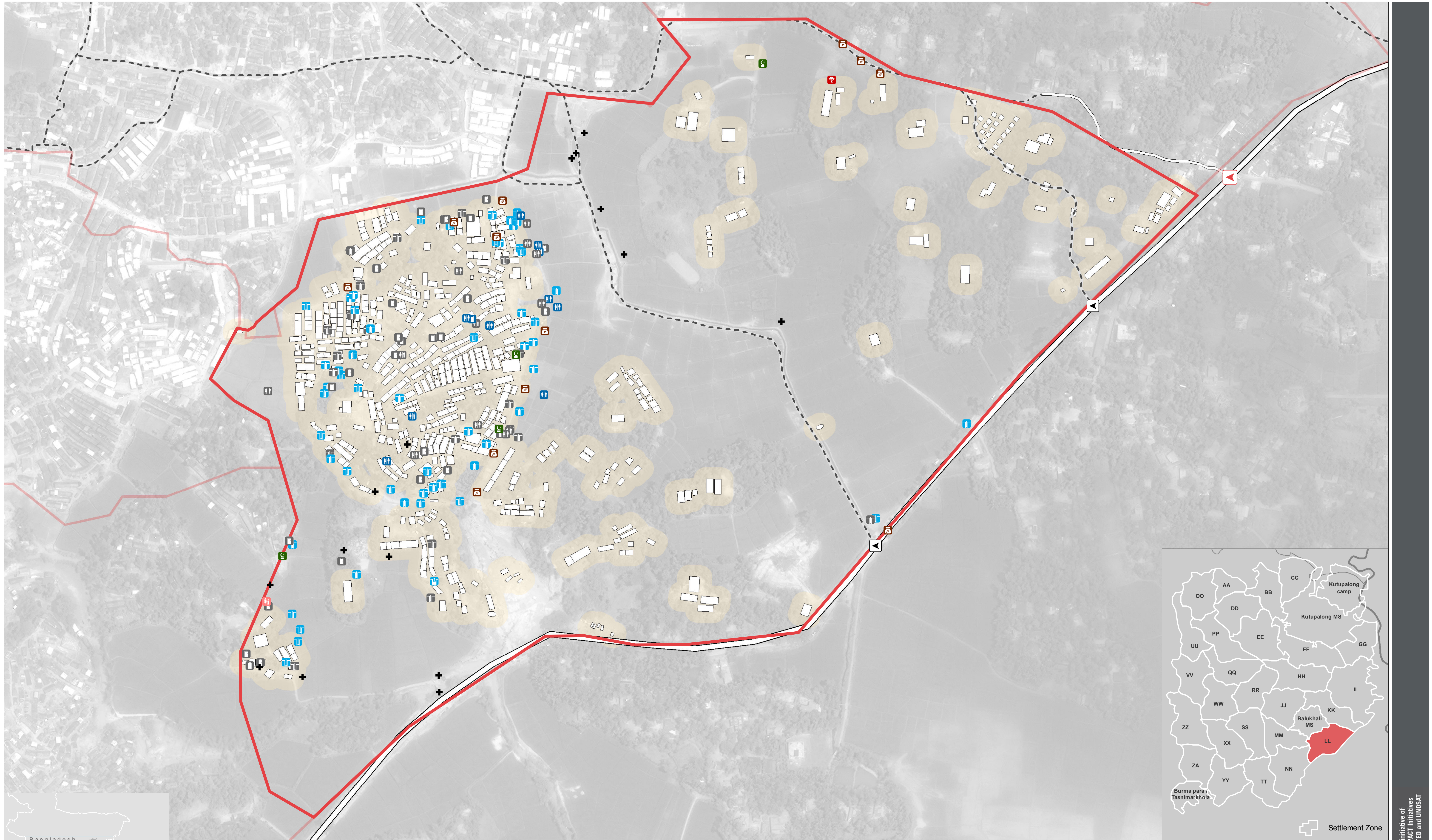


# BANGLADESH - Rohingya Refugee Crisis - Cox's Bazar District

## Kutupalong Extension - Zone LL - General Infrastructure

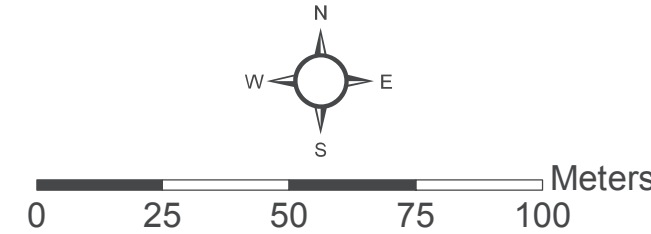


- Hand Pump - Tubewell
- Unimproved Well
- Hand Pump - Tubewell (Non Functioning)\*
- Latrines Block
- Makeshift Latrines Block
- Latrines Block (Non Functioning)\*
- Makeshift Latrines Block (Non Functioning)\*

- Open Defecation Area
- Health Centre
- Child Friendly Space
- Mosque
- Shop(s)

- Zone Boundary
- Shelter Footprints (as of 06 October)
- Main Road
- Vehicle Road
- Primary Footpath

- Car Access
- Pedestrian Access



\*Due to missing information in data collected by enumerators, the number of non-functioning facilities may be higher than indicated.

Note: Data, designations and boundaries contained on this map are not warranted to be error-free and do not imply acceptance by the REACH partners, associates or donors mentioned on this

Data Sources:  
Camp Infrastructure - REACH  
Site Boundaries - REACH / OCHA ROAP  
Shelter Footprints - REACH / UNOSAT  
Satellite Imagery: WorldView-3 from 06 October 2017  
Copyright: ©2017 DigitalGlobe  
Source: US Department of State, Humanitarian Information Unit, NextView License.  
Coordinate System: GCS WGS 1984  
File: reach\_bgd\_map\_coxsbazar\_ll\_infrastructure\_waterpoints\_17102017\_a1  
Contact: reach.mapping@impact-initiatives.org

