



Settlement and Protection Profiling

Camp 2W Ukhiya, Cox's Bazar, Bangladesh

July 2019 and December 2018 comparison

Round 5

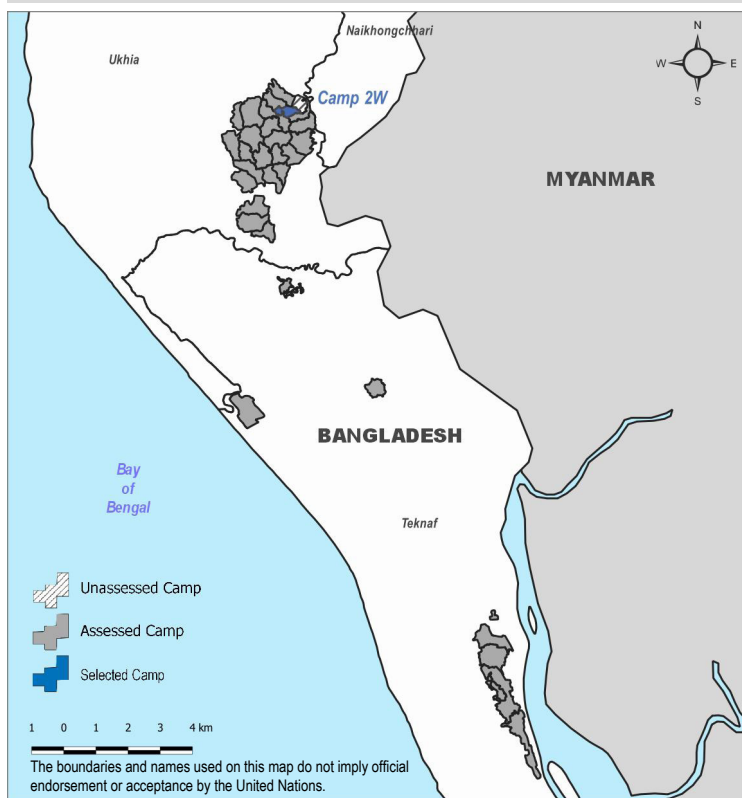
July 2019

Background and methodology

Since August 2017, an estimated 741,000 Rohingya refugees have fled from Myanmar into Cox's Bazar, Bangladesh, increasing the total number to around 910,000.¹ The majority are reliant on overstretched humanitarian assistance, services, and resources including shelter, food, clean water, and sanitation. Information on Rohingya households, particularly in relation to protection and access to services, is in need of regular updating due to the variation in service provision across settlements, challenges presented by the monsoon and cyclone seasons, and the evolving social and contextual dynamics within each settlement. Therefore, REACH, in partnership with UNHCR, continued Round 5 of the Settlement and Protection Profiling (SPP) Assessment in order to support evidence-based monitoring and analysis of cross-cutting protection issues in Rohingya refugee settlements.

The fifth round of SPP was conducted in 33 out of 34 refugee camps and settlements in Cox's Bazar District from 25 June - 5 August, 2019. Surveys were conducted with households selected through simple random sampling of shelter footprints. Translators Without Borders supported with translating the form into Rohingya. Results of this assessment are generalisable to the population of each camp with a 95% confidence level and 10% margin of error. This factsheet presents an analysis of data collected in Camp 2W, where 117 households were surveyed.

Where relevant, findings are compared to those of SPP Round 4 which took place from 25 November - 17 December, 2018.² July 2019 data is presented in **dark blue**, and December 2018 data is presented in **light blue**.



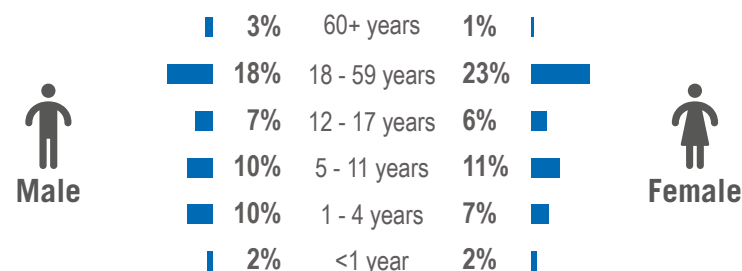
Key Camp Information

Camp Management	RRRC
Site Management Support	UNHCR / DRC
Population (individuals) ¹	25,130
Population (families) ¹	5,748
Camp Area	0.4 km ²
Population density	63,070 individuals/km ²



Demographics

Household composition by gender and age:



54% of individuals are under 18
78% of individuals are women and children

There is an average of **5.5** individuals reported per household

3% of households reported the presence of members with disabilities⁴

From UNHCR Key Demographic Indicators dataset¹

% of families with Persons with Specific Needs (PSN), by need³

Separated children	2%	Unaccompanied children	0%
Older person at risk	4%	Person with disability	5%
Older person at risk with children	2%	Single male parent with infants	1%
Serious medical condition	4%	Single female parent	14%
Families with PSN	29%		

83% of households arrived on 25 August 2017 or later



Protection

Five most frequently reported interventions needed to improve the sense of safety and security in the camps⁵:

July 2019			Dec 2018
50%	Increased community watch groups	①	Improved paths and roads 64%
50%	Improved paths and roads	②	Advice about safety issues 55%
44%	Better camp management	③	Better camp management 40%
38%	Advice about safety issues	④	Improved access for vulnerable persons 22%
20%	Street signs	⑤	Natural disaster warning systems 18%

1. RRRC/UNHCR population data and key demographic indicators, 15 August 2019.

<https://data2.unhcr.org/en/documents/details/70841>

2. UNHCR, Bangladesh: UNHCR Camp Settlement and Protection Profiling - Round 4, December 2018. <https://data2.unhcr.org/en/documents/details/68127>

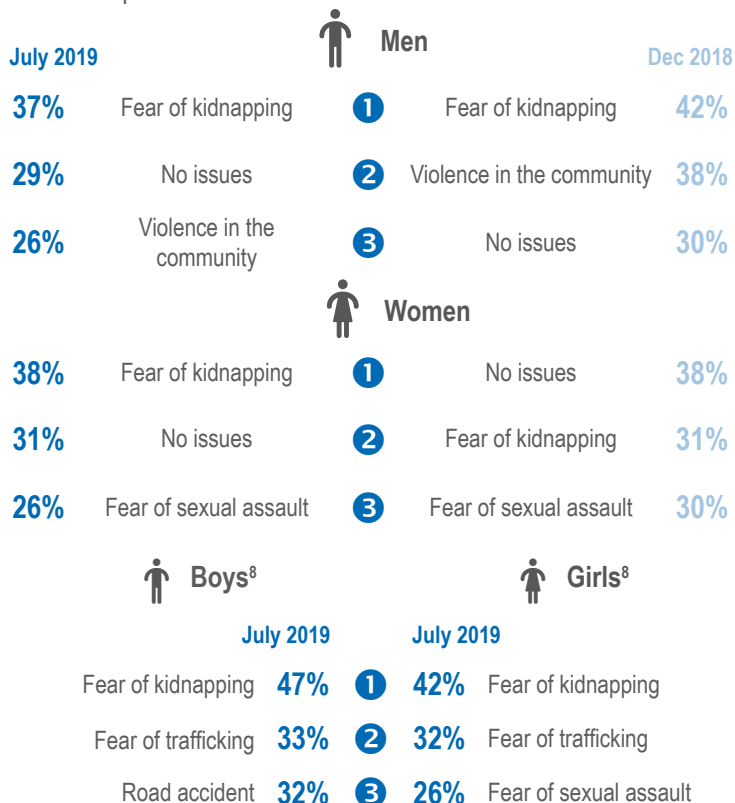
3. For definitions of key terms relating to special needs and disability, refer to UNHCR "Guidance on the Use of Standardized Specific Needs Codes" <https://bit.ly/2GnJE0h>.

4. For this round of data collection, disability was measured at the household level using the Washington Group Short Set of questions on disability. According to this methodology, 'disability' is determined as anyone in the household having at least 'a lot of difficulty' following six domains: walking, seeing, hearing, cognition, self-care, and communication.

5. Respondents could give up to three answers.



Three most frequently reported perceived risks faced by individuals in the camp^{6,7}:



Three most frequently reported preferred sources of support for various forms of security incidents⁹:

	Involving self or family, with persons inside the camps		Involving self or family, with persons outside the camp		Witness to security incident within the camps	
	July 2019	Dec 2018	July 2019	Dec 2018	July 2019	Dec 2018
1	Mahji	Mahji	Mahji	Mahji	Mahji	Mahji
2	Camp-in-Charge	Camp-in-Charge	Camp-in-Charge	Camp-in-Charge	Camp-in-Charge	Camp-in-Charge
3	Community members	Army	Army	Army	Community members	Army

91% of households would report if they witnessed an incident of child abuse, neglect, or exploitation⁸

96% of households reported being satisfied or very satisfied with the community watch groups in their area of the camp^{8,10,11}

91% of households reported feeling safe in their shelter⁸

6. Respondents could give up to three answers.

7. These results are based on the respondent's subjective perception of risks in the camp, and not the actual number of security incidents.

8. Round 5 data only. These indicators were not included in SPP Round 4.

9. Respondents could give multiple answers.

10. This number is a combination of households that reported 'satisfied' and 'very satisfied'.

11. This question was asked to a subset of 67 households that reported a community watch group in their area.

12. This question was asked to a subset of 90 households that contained children under 5.

13. Findings on specific issues are reported as a percentage among households who report any issues accessing latrines.

14. In July 2019, this question was asked separately for female and male household members. In December 2018, it was asked once for the household in general.

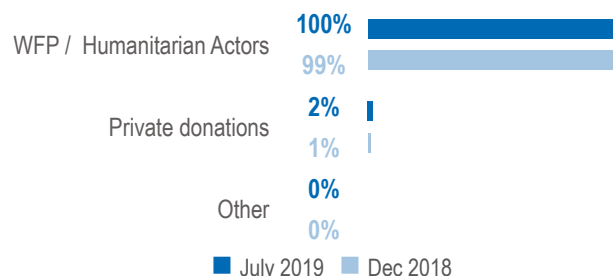


Food Security and Nutrition

July 2019

Dec 2018

97% of households reported receiving food assistance in the month prior to data collection. Of these, the sources of assistance were⁹:



Three most frequently reported consumption coping strategies⁹:



July 2019

Dec 2018

61% of households with children under 5, reported receiving a supplementary feeding ration in the 30 days prior to data collection¹²

21% of households reported receiving a breast-milk substitute since arriving in Bangladesh 17%

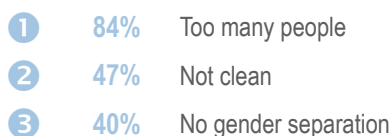


Water, Sanitation, and Hygiene

Three most frequently reported issues with latrines^{9,13}:



Dec 2018: three most frequently reported issues with latrines for the household^{9,13,14}



July 2019

Dec 2018

61% of households reported using public latrines as the usual facility for defecation 88%

28% of households reported that there was not enough light at night for members to safely access latrines 9%

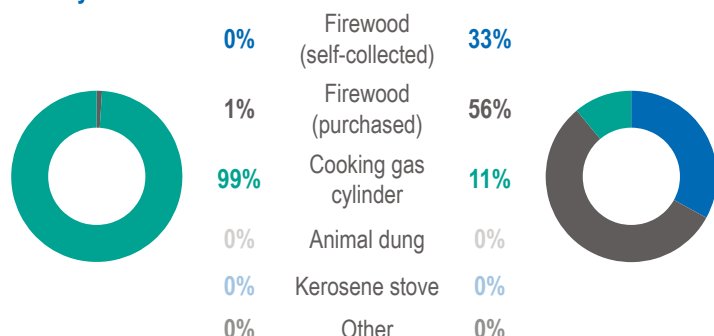


Shelter and Non-Food Items (NFIs)

% of households reported their main source of fuel:

July 2019

Dec 2018



July 2019

Dec 2018

100% of households reported cooking inside their shelter **95%**

85% of households reported living in lockable shelters **92%**

Three most frequently reported forms of support needed to address household shelter needs¹⁵:

July 2019

Dec 2018

62%	Shelter materials	1	Fuel	94%
47%	Solar light	2	Clothing	49%
44%	Cooking items	3	Cooking items	37%



Health

36% of individuals reported having an illness serious enough to require medical treatment in the 30 days prior to data collection¹⁶

Three most frequently reported challenges in accessing NGO clinics in the camps¹⁷:

July 2019

Dec 2018

55%	Crowded	1	Supplies unavailable	60%
49%	Supplies unavailable	2	Treatment unavailable	35%
21%	None	3	Crowded	23%

35% households reported being visited by a community health worker in the two weeks prior to data collection¹⁸



Education

July 2019

Dec 2018

94% of households reported being satisfied or very satisfied with the education available in the camps^{19,20} **81%**

Three most frequently reported education priorities for children^{16,19}

63%	Supplies	1	Improved curriculum	60%
45%	Better teachers	2	Better teachers	44%
27%	Improved curriculum	3	Religious education	25%



CwC and Site Management

Three most frequently reported preferred methods of receiving information¹⁷:

July 2019

Dec 2018

92%	Face to face	1	Face-to-face	98%
71%	Loudspeakers	2	Loudspeakers	59%
9%	Information hub	3	Phone call	37%

62% of households reported wanting the opportunity to have community representation in their camps

74% of households reported knowing how to access available assistance¹⁸

July 2019

Dec 2018

8% of households reported facing barriers in accessing assistance in the camps. **3%**

88% of households reported feeling that assistance providers listen to their opinion

Three most frequently reported sources of assistance to complain or raise a problem related to assistance in camps¹⁷:

1	82%	Mahji
2	65%	Camp In Charge
3	12%	Site Management Support agency



Priority Needs

Three most frequently reported priority needs:

1	Shelter materials	41%
	Access to food	42%
2	Shelter materials	22%
	Fuel	32%
3	Household/cooking items	16%
	Shelter materials	11%

■ July 2019 ■ Dec 2018

15. Respondents could give up to three answers.

16. Respondents were asked to report information for each individual in their household. The denominator for this indicator is all individuals.

17. Respondents could give multiple responses.

18. Round 5 data only. These indicators were not included in SPP Round 4.

19. In July, this question was asked only to households with children under the age of 18. In December 2018, it was asked to all households.

20. This number is a combination of households that reported 'satisfied' or 'very satisfied'.