

Summary

This profile provides an overview of water, sanitation and hygiene (WASH) infrastructure within Leda B in Teknaf, Cox's Bazar. Primary data for the sixth round was collected between 22 April - 12 May 2018.¹ Findings should be considered indicative only. The full camp dataset is available on [HDX](#).

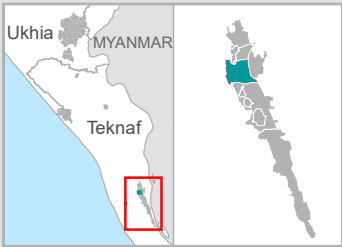
Site Overview

# of individuals:	2,871
# of households:	678
# of shelters:	12
# of individuals per shelter:	239.3

Key WASH Infrastructure

# of latrines: (% functional and safe ²):	85 (82%)
# of improved water sources: ³ (% functional):	19 (100%)
# of washrooms:	13

Location Map



Water Access

Three most commonly identified types of water points, by functionality:

74%	Handpump / tube well	100%	0%	Functional
11%	Water tank	100%	0%	Non-functional
16%	Tapstand	100%	0%	Non-functional

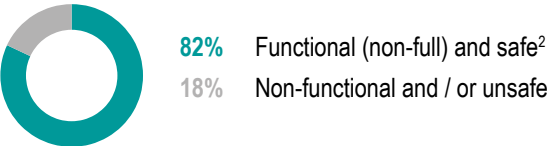
Key sectoral standards:

	Target	Current Round	Achievement
# of people per functional improved water source ³	max. 250	151	●
% of shelters with at least 1 functional improved water source ³ within 200m	100%	83%	●
% of functional improved water source with no latrine within 10m	100%	26%	●

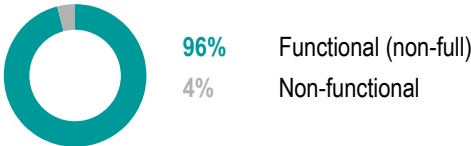
Sanitation

Latrine characteristics:

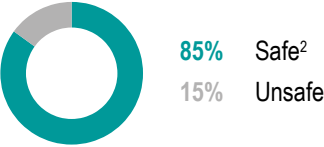
Functionality and safety



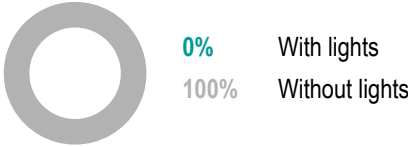
Functionality



Safety



Lighting



Key sectoral standards:

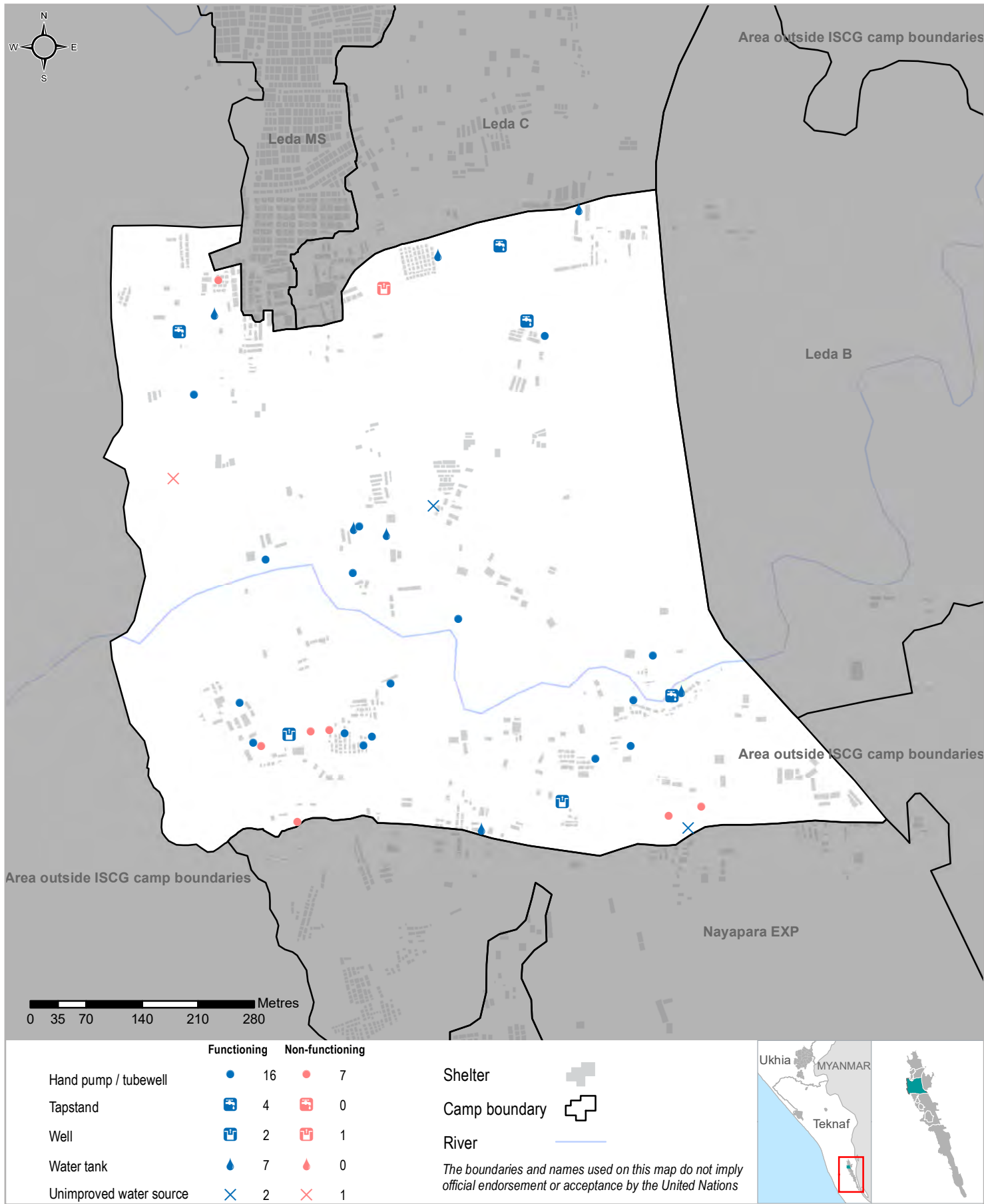
	Target	Current Round	Achievement
# of people per functional (non-full) and safe latrine ²	max. 20	41	●
# of people per functional (non-full) latrine	max. 20	35	●
# of people per safe latrine ²	max. 20	40	●
% of shelters with at least one functional and safe latrine ² block within 50m	100%	33%	●

Targets based on long term WASH Sector Standards / Indicators for the Rohingya response, Sphere Minimum Standards as well as Department of Public Health and Environment (DPHE) Minimum Standards. ● Minimum standard/indicator reached, ● 75-99% of the minimum standard reached, or within 25% of minimum standard reached, ● 50-74% of the minimum standard reached, or within 26-50% of minimum standard reached, ● Less than 50% of minimum standard reached, or within greater than 50% of minimum standard reached.

1 REACH enumerators conducted a full sweep of all sites and camps (as per boundaries defined by ISCG) and used a Kobo form to log all key infrastructure observed during this sweep.
2 'Safe' refers to fully covered latrines (i.e. a latrine with four walls, a roof and a lockable door).
3. This includes handpumps / tubewells, tapstands and water tanks.



Water Access





Sanitation

