



# IDP Camp Profile - Essian

Ninawa, Iraq  
August 2016

Management agency: BRHA  
Manager/Focal point: Shero Samo Joqe  
Phone number: 7504688207  
Email: n/a  
Registration actor: BRHA

## Summary

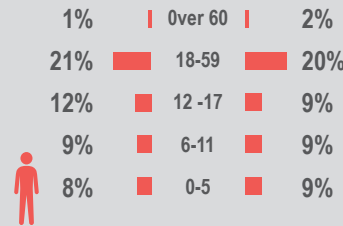
This profile provides an overview of conditions in Essian camp. Primary data was collected through household surveys on 31-08-16. Households were randomly sampled to a 95% confidence and 10% margin of error, based on population figures provided by CCCM. In some cases, additional information from camp managers has been used to support findings. Round V of data collection was in April 2016.

## Camp Overview

# of individuals: 14783  
# of households: 2710  
Date opened: 01-12-14  
Occupied number: 3003  
Ongoing extension: No  
Planned capacity: 3003  
Camp area: 521,559

## Demographics

51% male / 49% female

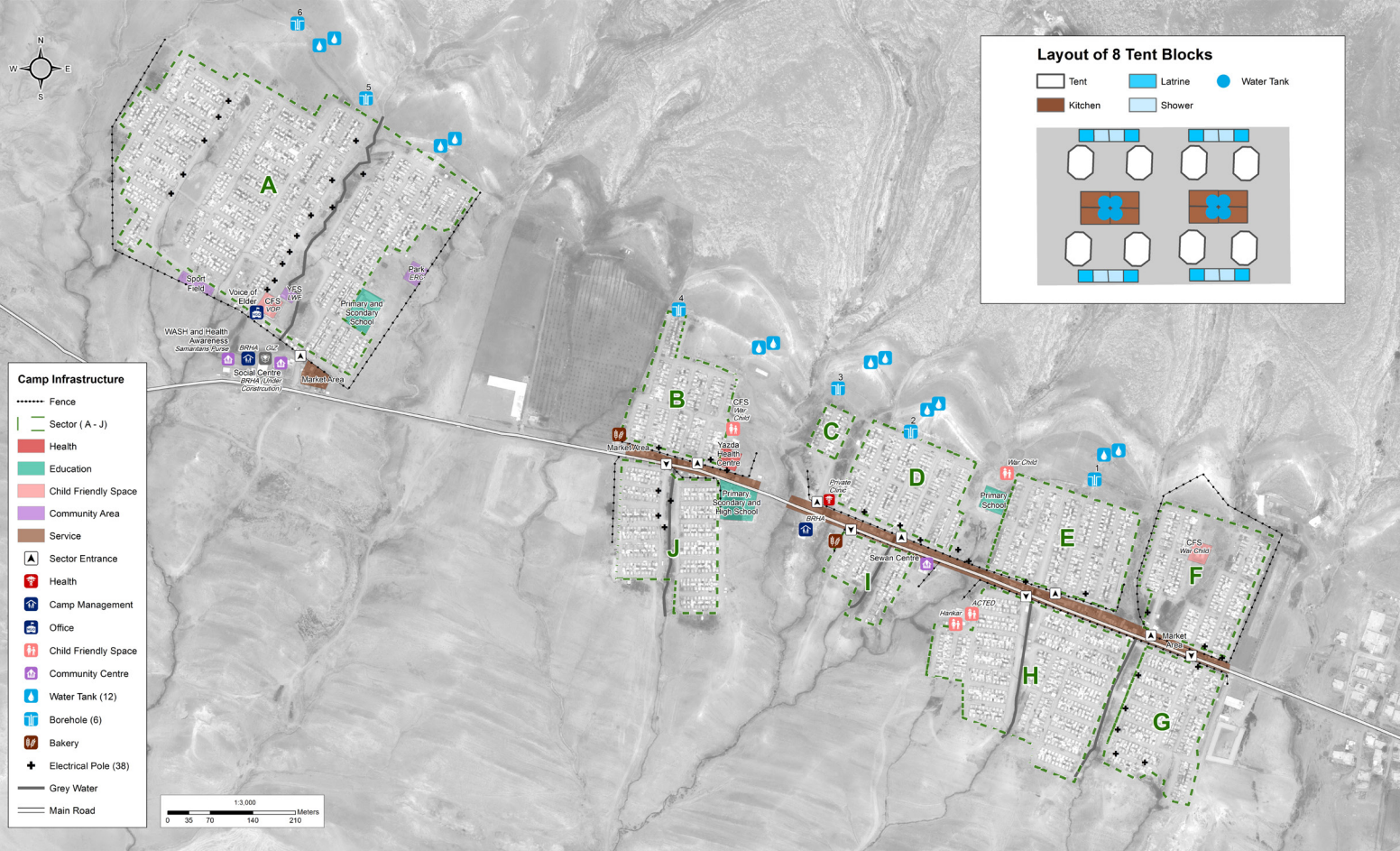


## Location Map



## IDP Camp Map - Essian

Lat. 36° 43' 18.109" N Long. 43° 16' 27.222" E



## Sectoral Minimum Standards

		Target	Previous Round	Current Round	Achievement
Education	% of children aged 6-11 attending formal school	100%	71%	83%	●
	% of children aged 12-17 attending formal school	100%	48%	74%	●
Food	% of households accessed Family Food Parcel or equivalent in the past month	100%	84%	96%	●
Health	Health services are available on-site or within walking distance	Yes	Yes	Yes	●
CCCM	Average open area per household	min. 30m <sup>2</sup>	159m <sup>2</sup>	159m <sup>2</sup>	●
Protection	% of IDPs registered on an individual basis (MODM/DDM)	100%	97%	97%	●
	% of households accessed shelter assistance since arrival at the camp	100%	85%	91%	●
Shelter	Average covered area per person	min. 3.5m <sup>2</sup>	3.7m <sup>2</sup>	3.7m <sup>2</sup>	●
	Average number of individuals per shelter	max.5	5	5	●
WASH	# of persons per latrine	max. 20	5	5	●
	# of persons per shower	max. 20	5	5	●
	Frequency of solid waste disposal at least weekly	min. weekly	Yes	Yes	●

\*GPS tracking of camp infrastructure was not possible this round due to restrictions from authorities. Area calculations subsequently could not be determined.

Targets based on minimum standards agreed with the CCCM Cluster, Iraq. Findings based on household-level data, enumerator field observations, and camp management documentation

● Minimum standard reached, ● More than 50% minimum standard reached, ● Less than 50% of minimum standard reached or not at all





# IDP Camp Profile - Essian

Ninewa, Iraq  
August 2016

Management agency: BRHA  
Manager/Focal point: Shero Samo Joqe  
Phone number: 7504688207  
Email: n/a  
Registration actor: BRHA

## Shelter

### Top three observed shelter types\*

Tent with brick walls	99%	<div></div>
Permanent structure	1%	<div></div>
n/a	n/a	

\*Households were asked to select all shelter typologies within household.

### Winterisation and NFI items

48%	reported a second fly sheet
86%	reported access to a heater
86%	reported at least one blanket per person
64%	reported at least one mattress per person
4	average number of carpets
59%	reported shelter provides warmth in winter

### Hazards

13%	reported exposed electrical cables at site
-----	--

### Shelter Improvement

75%	reported making own improvements to their shelter
-----	---

## Community Organisation

### IDP committees

100%	reported awareness of IDP committee(s)
------	--

### Complaints mechanism

100%	reported awareness of complaints mechanism
------	--

## Protection

### Family Separation

0%	reported hosting unaccompanied or separated minors
2%	reported that other family members intended to join them

### Vulnerable groups

Pregnant / lactating women	25%	<div></div>
Chronically ill individual(s)	6%	<div></div>
Disabled individual(s)	3%	<div></div>
Female headed households	7%	<div></div>

### Intentions

8%	planned to move to a different location in next 3 months
----	--

### Restrictions

0%	reported entry or exit restrictions during daylight hours
----	---

## Food Security and Coping Strategies

### Reported access to food assistance

96%	accessed food assistance in past month
99%	received Public Distribution System (PDS) in past month

### Top three food consumption coping strategies

Cheaper	62%	<div></div>
Less meals	14%	<div></div>
Borrowed	13%	<div></div>

### Top three reported livelihood coping strategies

Debt	56%	<div></div>
Support from Family	25%	<div></div>
Sold Assistance	23%	<div></div>

## WASH

### Latrines and showers

0%	reported public or communal latrines
n/a	public/communal latrines lockable from the inside
n/a	public/communal latrines with functioning lighting

### Top three reported methods of waste removal

Collected	75%	<div></div>
Communal bin	25%	<div></div>
n/a	n/a	

### Reported drinking water sources

0%	connection inside the home to collective water storage
100%	connection inside the home to private water storage
0%	communal water tap outside the shelter

### Access to water

2%	reported 24 consecutive hours without access to water in the past month
----	---

## Household Income

17%	reported as being economically inactive
-----	---

### Top three income sources\*:

Public security official	27%	<div></div>
No livelihood	17%	<div></div>
Low skilled service	14%	<div></div>

\*Households were asked to select all income sources within household.