



# Cold Spots Risk Assessment 2026/2027

May 2026 | Ukraine

## Executive Summary

This document outlines the results of the Cold Spots Risk Assessment for the 2026/2027 winter season in Ukraine. The assessment is intended to support winter preparedness and strategic planning by identifying areas at heightened risk of winter-related humanitarian impacts, informing prioritization within the Winter Response Plan, and supporting operational planning by humanitarian actors, local authorities, and service providers.

The war continues to drive displacement, damage to housing, and degradation of critical civilian infrastructure<sup>1</sup>, particularly energy, heating and water systems. During the 2025/2026 winter season, repeated attacks on energy infrastructure, combined with freezing temperatures, caused widespread disruptions to electricity, heating and water supply, affecting millions of people across the country.

The assessment identifies “cold spots” where winter-related hazards compound with high levels of exposure, population vulnerability, utility disruptions, and reduced coping capacity. Building on previous iterations<sup>2</sup>, the 2026/2027 assessment places stronger emphasis on electricity and heating disruptions, given their central role in household thermal comfort, access to water, communications, and essential services during winter.

Compared to previous years, the geography of winter risk appears increasingly shaped not only by frontline proximity, but also by broader energy-system disruption affecting large urban and densely populated areas. While the highest levels of risk remain concentrated in the north-east and east of the country, elevated vulnerability is also visible in areas affected by repeated outages, infrastructure pressure, and dependency on centralized services.

While maintaining a national overview, the assessment places particular focus on frontline and high-risk areas, where conflict intensity, infrastructure damage, service disruptions, and vulnerable population profiles can create acute winter-related humanitarian risks. Continuous monitoring and engagement with local authorities and communities will be essential to support winterisation planning and prioritize assistance.

## Key insights

- The highest Cold Spot Index scores for the 2026/27 winter season remain concentrated in the north-east and east of Ukraine, particularly across Kharkivska, Sumska, Donetsk, and Kyivska oblasts, where colder winter conditions overlap with conflict intensity, proximity to active hostilities or the Russian border, displacement, infrastructure disruption, and cumulative damage to electricity, water, and heating systems.
- Winter-related vulnerability is increasingly shaped not only by cold weather and frontline proximity, but also by the resilience of energy and utility systems. Repeated attacks on energy infrastructure and electricity disruptions continue to affect both frontline and urban areas.
- Large urban areas are an important dimension of Ukraine’s winter risk landscape. Cities such as Kyiv, Kharkiv, Odesa, and Dnipro combine high population exposure with dependency on centralized electricity, heating, water, and communication systems, meaning localized disruptions can affect large numbers of people simultaneously.
- Frontline and border areas face additional constraints due to insecurity, damaged access routes, limited repair capacity, and difficulties sustaining humanitarian logistics and service delivery during winter.
- While southern oblasts generally record lower natural winter hazard levels, parts of Khersonska, Zaporizka, and Odeska oblasts demonstrate winter-related vulnerability linked to conflict exposure, infrastructure disruption, and utility outages.

Image 1: Winter conditions in the Ukrainian Carpathians, December 2025. REACH



## Cold Spots Index 2026/2027 - Overall index

The map illustrates the presence of “cold spots” across Ukraine. These are raions where winter conditions combine with population exposure, demographic vulnerability, infrastructure disruption, and reduced coping capacity to indicate elevated humanitarian risk during the heating period from November 2026 to March 2027.

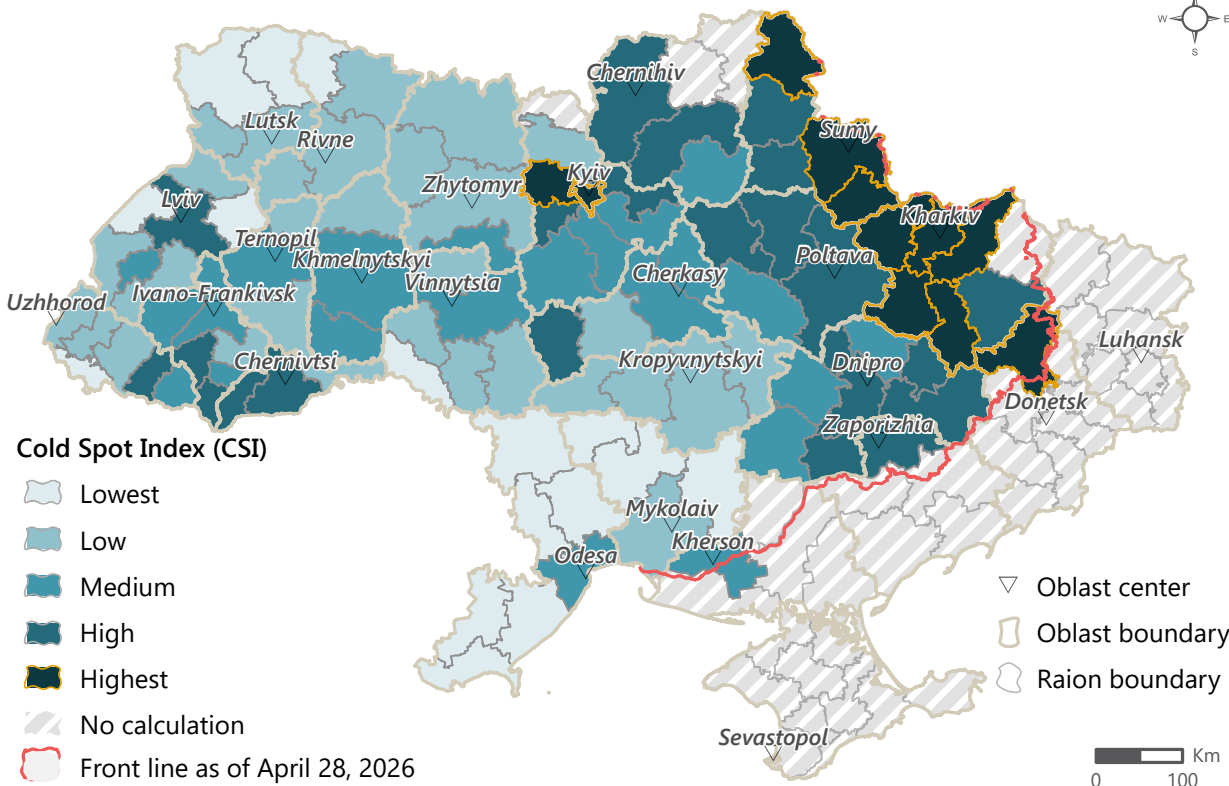
The highest Cold Spot Index scores remain concentrated in the north-east and east of Ukraine, particularly across **Kharkivska, Sumska, Donetsk, and Kyivska** oblasts. Kharkivskiy, Bohodukhivskiy, Chuhuivskiy, Lozivskiy, and Berestynskiy raions in Kharkivska oblast rank among the highest nationwide. In Sumska oblast, Sumskiy and Shostkynskiy raions also record elevated scores. Kramatorskiy raion in Donetsk oblast, Buchanskiy raion in Kyivska oblast, and Kyiv city similarly demonstrate high levels of compounded winter vulnerability, while Dniprovskiy raion in Dnipropetrovska oblast also records comparatively high winter-related risk. These areas are characterized by the overlap between colder winter conditions, proximity to active hostilities or the Russian border, repeated attacks on critical infrastructure, and reduced service restoration capacity.

Large urban areas also represent an important dimension of winter risk. While frontline and border raions remain the most affected overall, cities such as Kyiv, Odesa, Kharkiv and Dnipro combine high population exposure with dependency on centralized electricity, heating, water and communication systems.

They are also exposed to long-range aerial attacks targeting critical infrastructure. As a result, even localized disruption in urban systems can affect large numbers of people simultaneously, including older people, people with disabilities, families with young children, and households living in damaged or poorly insulated housing.

Cold-related risks in Ukraine are shaped not only by low temperatures, but also by the condition and functionality of electricity, heating, water, and gas systems. When these systems are damaged or disrupted, impacts can cascade across households and essential services, particularly in areas dependent on centralized heating, electricity-powered water supply, or limited alternative heating options. Public support infrastructure, such as Ukraine’s “Points of Invincibility”, reflects the importance of maintaining access to heat, electricity, water, communications, and basic support during outages and other emergency situations. These points were initially established to support people during wartime blackouts and have continued to represent an important preparedness measure during winter disruptions.

Higher rankings are generally associated with the interaction between conflict related infrastructure damage, elevated humanitarian needs, displacement patterns, utility disruptions, and demographic vulnerability. Lower rankings remain more common across western Ukraine and parts of central and southern Ukraine, where conflict exposure and infrastructure disruption are comparatively lower. However, localised winter-related vulnerability remains visible across several oblasts due to displacements, infrastructure disruption, electricity outages, and household-level coping constraints.



### Excluded, partially-occupied raions

The analysis does not cover raions that are entirely outside the control of the Government of Ukraine. In addition, raions where less than half of the territory is under government control are excluded from the calculation, as available data is insufficient to produce a consistent and comparable index score.

This exclusion reflects methodological constraints and data availability, not an absence of winter-related risk. On the contrary, many of these areas are likely to face severe humanitarian conditions due to proximity to the frontline, infrastructure damage, limited service functionality, and restricted access.

In addition, two raions in Chernihivska oblast located along the northern border, as well as the Chernobyl exclusion zone area, are marked as having insufficient information. This is linked to limitations in available or comparable data for some indicators, particularly in areas affected by restricted access, low population presence, security constraints and disrupted reporting systems. As a result, excluded or non-calculated raions should be understood as areas where risk could not be reliably calculated within this model, rather than areas of lower concern.

Map 1. Cold Spots Index by raion, Ukraine 2026/27 winter season

## Methodology

This analysis is adapted from the [INFORM](#) framework established by the Inter-Agency Standing Committee Reference Group on Risk, Early Warning and Preparedness and the European Commission. It conceptualizes risk as the interaction between hazard, exposure, and vulnerability, with vulnerability understood through susceptibility and lack of coping capacity (LOCC).

A geospatial analysis was conducted using aggregated data from multiple indicators to identify areas most affected by winter-related hazards and vulnerabilities. The analysis was conducted at both oblast and raion level, with raion-level results forming the main basis for the Cold Spots Index.

The analysis covers raions mostly under the control of the government of Ukraine as of spring 2026. Raions for which up-to-date or sufficiently reliable data could not be obtained are marked as “No data” on the maps. Cold spots were identified based on four groups of indicators: hazard, exposure, susceptibility, and lack of coping capacity. All indicators were standardized and classified into five classes using Jenks Natural Breaks, from 1, lowest relative risk, to 5, highest relative risk.

**Hazard:** Frequency of cold waves; snow cover duration days per year; number of cold days per year; and number of frost days per year, based on historical averages<sup>3,4</sup>. Historical data on these factors are analyzed to determine the likelihood and intensity of winter hazards at raion level.

**Exposure:** Estimated population density, using the most recent available population estimates<sup>5</sup>. Higher population density indicates a larger number of people potentially affected by winter hazards and related service disruptions.

**Susceptibility:** The percentage of elderly people, children, internally displaced persons<sup>6</sup>, and people living in active collective sites<sup>7</sup>. Where available, REACH MSNA<sup>8</sup> indicators are also used to capture household-level vulnerability, including shelter conditions, heating access, and ability to meet basic needs.

**LOCC:** Cumulative damage to electricity, gas, water, and heating infrastructure; conflict incident density; recorded incidents involving energy infrastructure<sup>9</sup>; average electricity disruption burden; and district heating or energy sector needs. These indicators highlight infrastructure damage, service disruption, and reduced capacity to cope with winter conditions.<sup>10,11</sup>

The overall Cold Spots Index was calculated by combining the four component classes into an integrated index. The final index was then classified into five categories to identify relative levels of winter-related vulnerability across Ukraine.

This formula defines Cold Spot risk as a combination of hazard (weighted 35%), exposure (weighted 25%), and vulnerability (weighted 40% and understood as a combination of susceptibility and LOCC). A final “rank” is assigned using Jenk’s Natural Breaks. The number of raions in each rank is determined by the Jenk’s Natural Breaks algorithm.

In addition to the Cold Spots Index itself, this report includes several thematic sections intended to provide additional context on winter-related risks in Ukraine. They examine patterns of incidents involving energy-related infrastructure, recent temperature variability and snow cover trends, and how winter conditions may affect infrastructure resilience, humanitarian access, and access to essential services. Particular attention is given to the interaction between climate conditions, conflict-related infrastructure damage, and operational constraints in frontline, border, rural, and densely populated urban areas during the winter period.

For detailed references, data sources, and external materials used throughout this report, please refer to the References section at the end of the document.

### Limitations

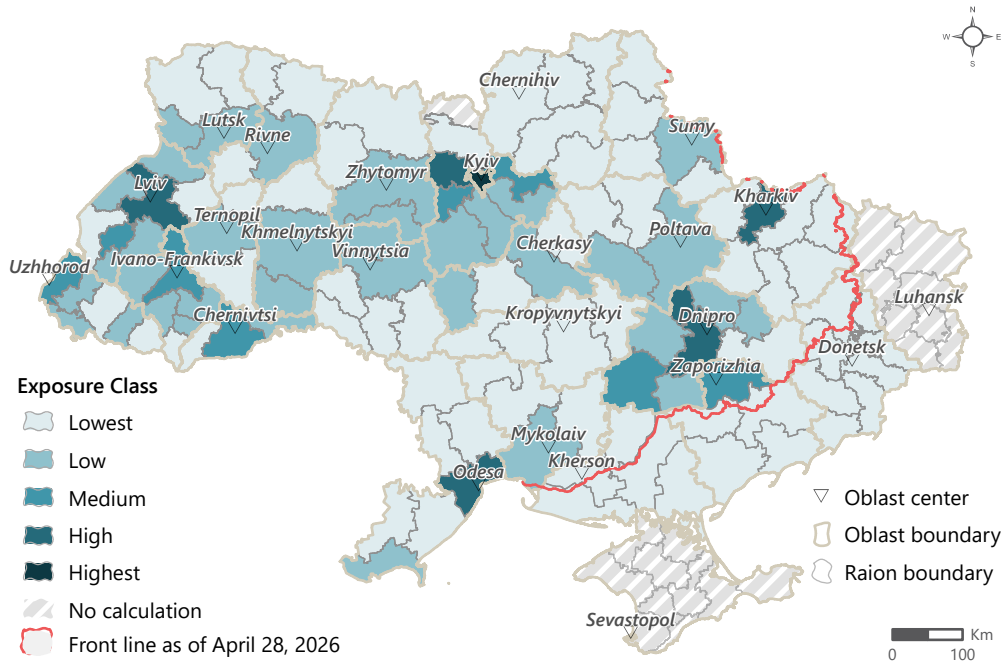
The Cold Spot Index should be interpreted as a relative risk model rather than a precise measurement of winter needs. Population figures are estimates and remain highly dynamic due to displacement, evacuations, returns, and changing security conditions. Some indicators also rely on incomplete or unevenly available data, particularly in areas affected by insecurity, restricted access, occupation, or disrupted local reporting systems.

The situation remains highly dynamic. Ongoing attacks on energy, housing, and civilian infrastructure can rapidly alter local conditions after the data collection period, while interconnected electricity, gas, heating, and water networks mean localized damage may have wider effects. Raions are excluded where less than half of their territory is under Government of Ukraine control, or where data is insufficient to produce a comparable score. Exclusion does not imply absence of winter-related risk.



## Exposure, hazard, susceptibility and lack of coping capacity

Map 2: Exposure component by raion, based on estimated population density



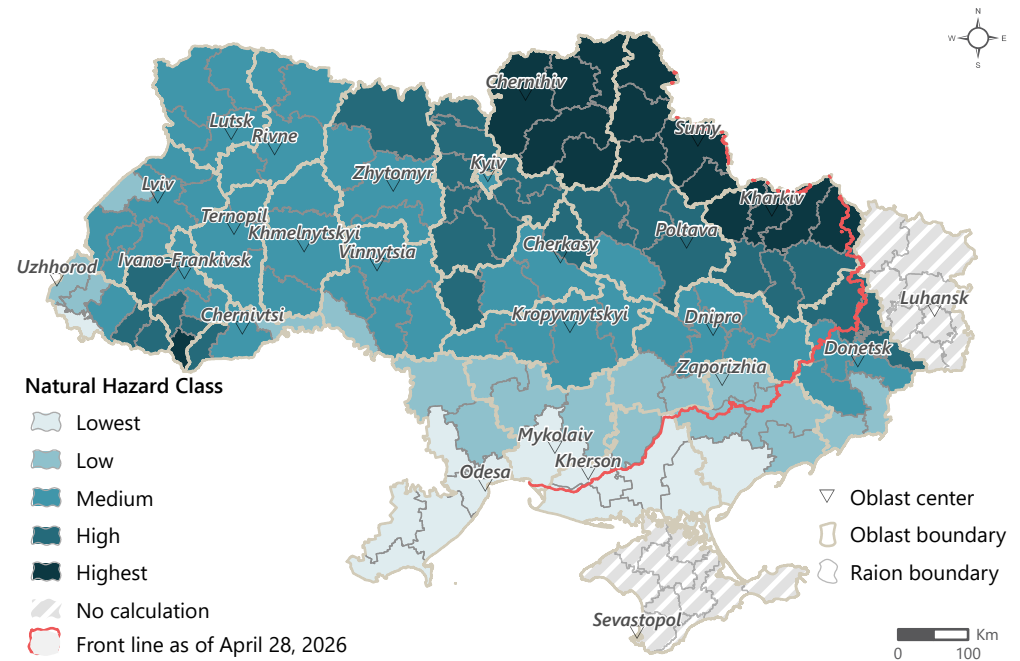
### Exposure

Exposure is calculated using the population density indicator, based on UNFPA population data<sup>5</sup> and area calculations at both oblast and raion levels. Ukraine has experienced major population changes since the beginning of the full-scale invasion in February 2022, driven by displacement, evacuation, return movements, and changes in local security conditions<sup>12,13</sup>.

The highest exposure values are generally found in large urban and peri-urban raions, where larger numbers of people may be affected by winter hazards and service disruptions. At oblast level, the highest values are observed in Kyivska oblast and Kyiv city, as well as Dnipropetrovska, Lvivska, and Odeska oblasts, reflecting expected demographic patterns and the concentration of population in major urban areas.

At raion level, the highest population density is concentrated in Kyiv city and adjacent raions, as well as Kharkivskiy, Dniprovskiy, Odeskiy, and Lvivskiy raions and surrounding areas.

Map 3: Natural hazard component by raion, including cold waves, frost days, and snow cover duration



### Natural Hazard

The "natural hazard" class is calculated using cold waves, frost days, and winter mean snow cover duration, based on historical averages for the period 2006 to 2026.<sup>14,15</sup>

Northern and north-eastern oblasts show the highest winter hazard levels, particularly Sumska and Kharkivska, due to their exposure to colder air masses and longer periods of winter conditions. Central areas, including parts of Kyivska and Poltavka, also show elevated hazard levels.

At raion level, the spatial pattern is more detailed, with a clear belt of higher winter hazard along the northern and north-eastern border with the Russian Federation. Localized higher hazard values are also visible in some raions of Ivano-Frankivska and Zakarpatska oblasts, linked to the Carpathian mountain areas.

Lower winter hazard levels are generally observed in southern and coastal raions, particularly in Odeska, Khersonska and Mykolaivska oblasts, where winter conditions are moderated by the Black Sea influence.

**Susceptibility**

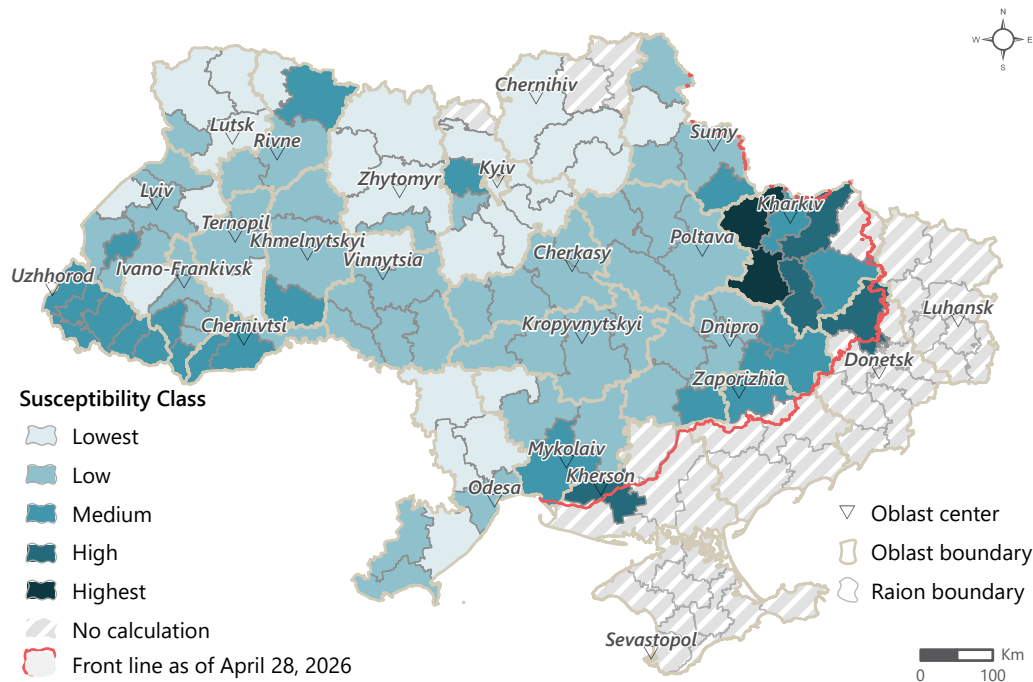
The “susceptibility” class is calculated based on the proportion of internally displaced persons, elderly people, children, and IDPs living in active collective sites. IDP data is sourced from IOM, demographic indicators from UNFPA 2025, and collective site data from CCCM ML 2026.

The highest susceptibility values are observed in Khersonska oblast, while a broader belt of elevated vulnerability is visible across frontline and conflict-affected oblasts, including Zaporizka, Dnipropetrovska, Donetsk, and Kharkivska. Zakarpatska oblast also shows elevated susceptibility, linked to displacement and the presence of vulnerable population groups.

At raion level, Bohodukhivskiy and Berestynskiy raions in Kharkivska oblast stand out with the highest values, while neighbouring eastern raions also show elevated levels. In Khersonska oblast, Khersonskiy raion stands out from the broader oblast pattern.

These population groups may face heightened socio-economic vulnerability during winter, particularly where heating costs, damaged housing, displacement, and limited access to services increase pressure on household coping capacity.

Map 4: Susceptibility component by raion, including demographic vulnerability and displacement-related indicators



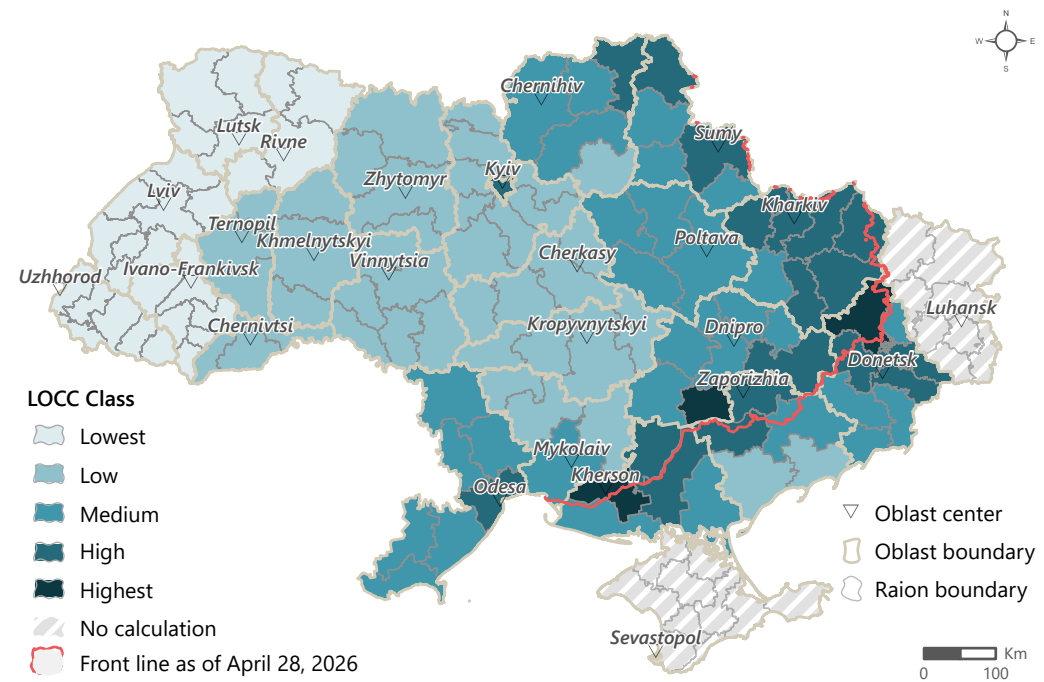
**Lack of Coping Capacity**

The “lack of coping capacity” class is calculated using conflict incident density per 100 square kilometres, recorded damage to power and electricity infrastructure, and electricity outage data. Conflict and infrastructure damage data are sourced from ACLED for the period April 2025 to May 2026, while electricity outage data are sourced from Oblenergo for the winter period from 1 December 2025 to 28 February 2026. The highest LOCC values are concentrated in frontline and near-frontline oblasts, including Khersonska, Donetsk, Kharkivska, and Dnipropetrovska, with elevated values also visible in Zaporizka oblast and Kyiv city. This reflects the combined effect of conflict intensity, repeated damage to energy infrastructure, and winter electricity disruptions.

At raion level, a clear belt of higher LOCC values is visible along the frontline and in areas close to the Russian border. Kyiv city and Odeskiy raion also show elevated values, underlining that reduced coping capacity is not only linked to direct frontline proximity, but also to disruption of critical energy systems in large urban and infrastructure-dependent areas.<sup>16</sup>

The lowest LOCC values are generally found in western raions, where conflict intensity and recorded energy infrastructure damage are comparatively lower.

Map 5: Lack of Coping Capacity by raion, including conflict intensity, infrastructure damage, and utility disruptions



## Energy infrastructure attacks and winter access constraints

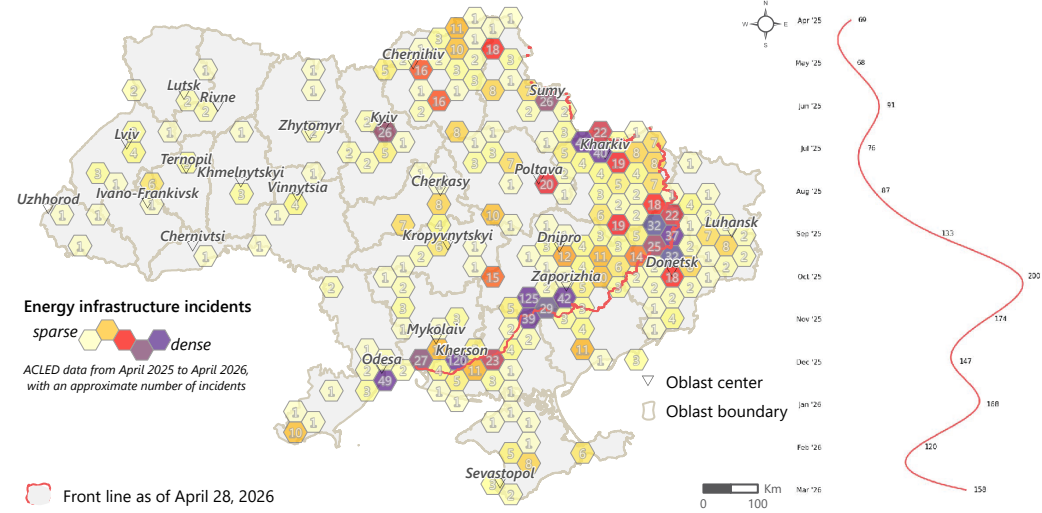
Repeated attacks on energy-related infrastructure remain one of the main factors shaping winter vulnerability in Ukraine. Data from April 2025 to April 2026 indicates that incidents affecting energy infrastructure were most concentrated along the frontline and in near-frontline oblasts, particularly across parts of Khersonska, Zaporizka, Donetsk, Kharkivska, and Sumska oblasts. Elevated concentrations are also visible around major urban centres such as Kyiv, Kharkiv, Odesa, and Dnipro, reflecting both the strategic importance of these systems and the high population exposure associated with large urban agglomerations.

The humanitarian implications of these attacks extend beyond electricity supply alone. Damage to energy systems can disrupt centralized heating, water pumping, communications, health services, transport systems, and access to basic services simultaneously. In densely populated urban areas, even localized outages can affect large numbers of people and rapidly increase pressure on municipal systems and emergency response capacity. In frontline and rural areas, infrastructure damage is often compounded by insecurity, limited repair capacity, damaged roads, and difficulties maintaining humanitarian access during periods of active hostilities<sup>17</sup>.

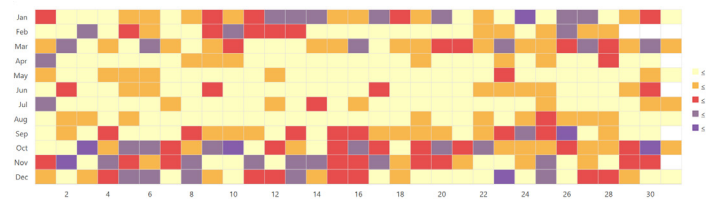
Winter conditions can further intensify these challenges. Snow cover duration between December 2025 and February 2026 was highest across northern, north-eastern, and western parts of Ukraine, including areas bordering the Russian Federation and Belarus.

Map 6. Recorded incidents involving energy-related infrastructure, April 2025 to April 2026

Graph 1: Monthly evolution of recorded incidents involving energy-related infrastructure in 2025/26



Graph 2: Daily concentration of recorded energy infrastructure incidents in 2025



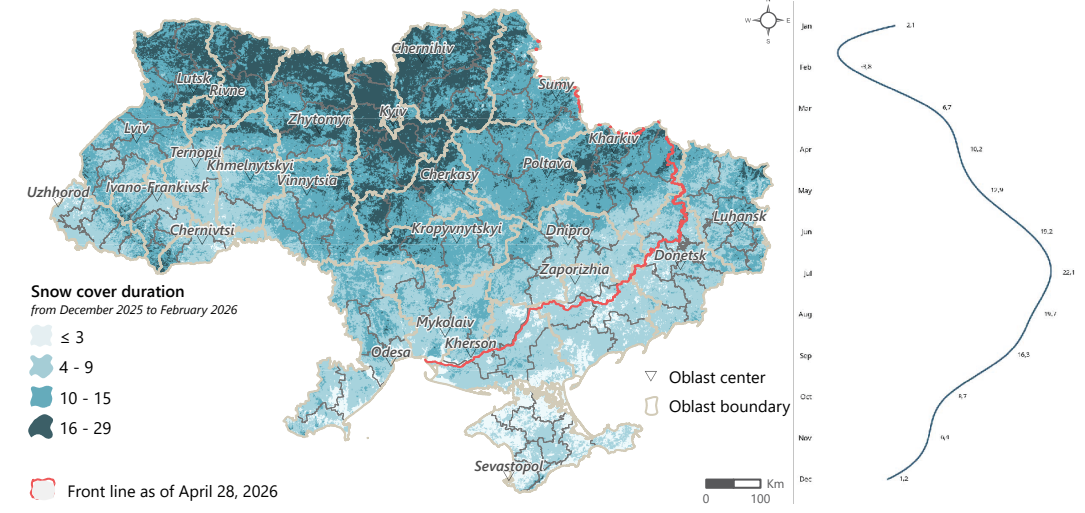
Prolonged snow coverage and periods of freezing temperatures can complicate movement, slow repair operations, and reduce access to remote settlements, particularly in rural and frontline areas where infrastructure and transport networks are already degraded. These conditions may affect both humanitarian logistics and civilian access to health services, markets, heating support, and evacuation routes.

Recent temperature patterns also demonstrate increasing climate variability<sup>15</sup>. While annual averages continue to fluctuate, winter 2025/26 recorded substantially colder conditions than the previous winter, including extended cold periods during January and February. Combined with repeated attacks on infrastructure systems, these conditions increase the likelihood of localized service disruptions and place additional pressure on household coping capacity during the winter period.

Taken together, the interaction between climate conditions, infrastructure damage, insecurity, and access constraints<sup>18</sup> highlights the importance of integrated winter preparedness planning. For humanitarian actors, this includes considering not only heating needs and weather exposure, but also road access, infrastructure resilience, repair capacity, population concentration, and the potential for prolonged disruption to essential services during winter months.

Map 7. Winter snow cover duration by oblast and raion, winter 2025/26

Graph 3: Monthly evolution of temperature in Ukraine 2025



## Cold Spots Index Results Table

Raion	Oblast	Frontline	Natural	Exposure	Susceptibility	LOCC	CSI score	Cold Spot Index
Kharkivskiyi	Kharkivska	Yes	5	4	3	4	4,15	Highest
Bohodukhivskiyi	Kharkivska	Yes	5	1	5	4	3,8	Highest
Chuhivskiyi	Kharkivska	Yes	5	1	4	4	3,6	Highest
Kramatorskiy	Donetska	Yes	4	1	4	5	3,45	Highest
Sumskiyi	Sumska	Yes	5	2	2	4	3,45	Highest
Buchanskiy	Kyivska		4	4	3	2	3,4	Highest
Kyiv	Kyiv		3	5	1	4	3,3	Highest
Berestynskiyi	Kharkivska		4	1	5	3	3,25	Highest
Lozivskiyi	Kharkivska		4	1	4	4	3,25	Highest
Okhtyrskiyi	Sumska	Yes	5	1	3	3	3,2	Highest
Shostkynskiyi	Sumska	Yes	5	1	2	4	3,2	Highest
Iziumskiyi	Kharkivska	Yes	4	1	3	4	3,05	High
Dniprovskiyi	Dnipropetrovska		3	4	2	3	3,05	High
Romenskiy	Sumska		5	1	2	3	3	High
Fastivskiyi	Kyivska		4	3	2	2	2,95	High
Poltavskiyi	Poltavska		4	2	2	3	2,9	High
Zaporizkiy	Zaporizka	Yes	2	3	3	4	2,85	High
Nikopolskiy	Dnipropetrovska	Yes	2	2	3	5	2,8	High
Chernihivskiyi	Chernihivska		5	1	1	3	2,8	High
Chernivetskiy	Chernivetska		3	3	3	2	2,8	High
Nizhynskiyi	Chernihivska		5	1	1	3	2,8	High
Verkhovynskiyi	Ivano-Frankivska		5	1	3	1	2,8	High
Konotopskiyi	Sumska	Yes	5	1	1	3	2,8	High
Brovarskiyi	Kyivska		4	3	1	2	2,75	High
Pavlohradskiyi	Dnipropetrovska		3	2	3	3	2,75	High
Synelnykivskiyi	Dnipropetrovska	Yes	3	1	3	4	2,7	High
Nadvirnianskiy	Ivano-Frankivska		4	2	3	1	2,7	High



Raion	Oblast	Frontline	Natural	Exposure	Susceptibility	LOCC	CSI score	Cold Spot Index
Tiachivskiy	Zakarpatska		4	2	3	1	2,7	High
Umanskyi	Cherkaska		4	2	2	2	2,7	High
Lubenskyi	Poltavska		4	1	2	3	2,65	High
Lvivskiy	Lvivska		3	4	2	1	2,65	High
Myrhorodskiy	Poltavska		4	1	2	3	2,65	High
Vyzhnytskyi	Chernivetska		4	1	3	2	2,65	High
Drohobyskyi	Lvivska		3	3	3	1	2,6	Medium
Prylutskyi	Chernihivska		5	1	1	2	2,6	Medium
Kamianets-Podilskiy	Khmelnyska		3	2	3	2	2,55	Medium
Kamianskyi	Dnipropetrovska		3	2	2	3	2,55	Medium
Kremenchutskiy	Poltavska		3	2	2	3	2,55	Medium
Samarivskiy	Dnipropetrovska		3	2	2	3	2,55	Medium
Odeskyi	Odeska	Yes	1	4	2	4	2,55	Medium
Bilotserkivskiy	Kyivska		4	2	1	2	2,5	Medium
Boryspilskiy	Kyivska		4	2	1	2	2,5	Medium
Kosivskiy	Ivano-Frankivska		4	2	2	1	2,5	Medium
Obukhivskiy	Kyivska		4	2	1	2	2,5	Medium
Kryvorizkyi	Dnipropetrovska	Yes	2	3	2	3	2,45	Medium
Rakhivskiy	Zakarpatska		4	1	3	1	2,45	Medium
Zolotoniskiy	Cherkaska		4	1	2	2	2,45	Medium
Ivano-Frankivskiy	Ivano-Frankivska		3	3	2	1	2,4	Medium
Khersonskiy	Khersonska	Yes	1	1	4	5	2,4	Medium
Berdychivskiy	Zhytomyrska		3	2	2	2	2,35	Medium
Cherkaskiy	Cherkaska		3	2	2	2	2,35	Medium
Khmelnyskyi	Khmelnyska		3	2	2	2	2,35	Medium
Ternopilskiy	Ternopilska		3	2	2	2	2,35	Medium
Vinnytskyi	Vinnytska		3	2	2	2	2,35	Medium
Kaluskyi	Ivano-Frankivska		4	2	1	1	2,3	Medium
Korostenskyi	Zhytomyrska		4	1	1	2	2,25	Low
Uzhhorodskiy	Zakarpatska		2	3	3	1	2,25	Low



Raion	Oblast	Frontline	Natural	Exposure	Susceptibility	LOCC	CSI score	Cold Spot Index
Vyshhorodskiy	Kyivska		4	1	1	2	2,25	Low
Khmilnytskyi	Vinnyska		3	2	1	2	2,15	Low
Kolomyiskyi	Ivano-Frankivska		3	2	2	1	2,15	Low
Rivnenskyi	Rivnenska		3	2	2	1	2,15	Low
Sheptytskyi	Lvivska		3	2	2	1	2,15	Low
Stryiskiy	Lvivska		3	2	2	1	2,15	Low
Volodymyrskiy	Volynska		3	2	2	1	2,15	Low
Zhytomyrskiy	Zhytomyrska		3	2	1	2	2,15	Low
Haisynskiy	Vinnyska		3	1	2	2	2,1	Low
Holovanivskiy	Kirovohradska		3	1	2	2	2,1	Low
Khustskiy	Zakarpatska		3	1	3	1	2,1	Low
Kremenetskyi	Ternopilka		3	1	2	2	2,1	Low
Kropyvnytskyi	Kirovohradska		3	1	2	2	2,1	Low
Novoukrainskyi	Kirovohradska		3	1	2	2	2,1	Low
Oleksandriiskiy	Kirovohradska		3	1	2	2	2,1	Low
Sarnenskyi	Rivnenska		3	1	3	1	2,1	Low
Shepetivskiy	Khmelnyska		3	1	2	2	2,1	Low
Tulchynskiy	Vinnyska		3	1	2	2	2,1	Low
Zhmerynskiy	Vinnyska		3	1	2	2	2,1	Low
Zvenyhorodskiy	Cherkaska		3	1	2	2	2,1	Low
Mykolaivskiy	Mykolaivska	Yes	1	2	3	3	2,05	Low
Dnistrovskiy	Chernivetska		2	2	2	2	2	Low
Mukachivskiy	Zakarpatska		2	2	3	1	2	Low
Lutskiy	Volynska		3	2	1	1	1,95	Low
Chortkivskiy	Ternopilka		3	1	1	2	1,9	Low
Dubenskyi	Rivnenska		3	1	2	1	1,9	Low
Sambirskiy	Lvivska		3	1	2	1	1,9	Low
Zviahelskyi	Zhytomyrska		3	1	1	2	1,9	Low
Izmailskiy	Odeska		1	2	2	3	1,85	Lowest
Berezivskiy	Odeska		2	1	1	3	1,75	Lowest



Raion	Oblast	Frontline	Natural	Exposure	Susceptibility	LOCC	CSI score	Cold Spot Index
<b>Mohyliv-Podilskiy</b>	Vinnytska		2	1	2	2	1,75	Lowest
<b>Podilskiy</b>	Odeska		2	1	1	3	1,75	Lowest
<b>Voznesenskiy</b>	Mykolaivska		2	1	2	2	1,75	Lowest
<b>Bashtanskiy</b>	Mykolaivska	Yes	2	1	2	2	1,75	Lowest
<b>Kamin-Kashyrskiy</b>	Volynska		3	1	1	1	1,7	Lowest
<b>Kovelskiy</b>	Volynska		3	1	1	1	1,7	Lowest
<b>Varaskiy</b>	Rivnenska		3	1	1	1	1,7	Lowest
<b>Zolochivskiy</b>	Lvivska		3	1	1	1	1,7	Lowest
<b>Berehivskiy</b>	Zakarpatska		1	2	3	1	1,65	Lowest
<b>Bolhradskiy</b>	Odeska		1	1	2	3	1,6	Lowest
<b>Yavorivskiy</b>	Lvivska		2	2	1	1	1,6	Lowest



## References

1. REACH, [Winter power outages - The consequences of power outages, and factors contributing to societal resilience](#), November 2025.
2. REACH, [Cold Spot Risk Assessment](#), May 2025.
3. Copernicus, ERA5-Land monthly averaged data from 1950 to present, accessed May 2026.
4. NASA, MOD11A1 v061, accessed May 2026.
5. Data referenced from United Nations Population Fund, "2025 Common Operational Dataset on Population Statistics (COD-PS)", restricted access, IOM, August 2025.
7. Camp Coordination and Camp Management Cluster, Active Collective Sites as of April 2026.
8. REACH, [Multi-sector Needs Assessment](#), Ukraine, December 2025.
9. [Armed Conflict Location Events Database](#), accessed May 2026.
10. UNHRMMU, "[Energy attacks amid an unusually harsh winter are exposing Ukraine's civilians to extreme hardship](#)", February 2026,
11. Electricity outage data compiled from publicly available scheduled and emergency outage information published by Ukrenergo and regional electricity distribution operators, December 2025 to February 2026.
12. IOM, "[325,000 Ukrainian Returnees Risk Displacement Again as Winter Energy Crisis Deepens, IOM Chief](#)", February 2026.
13. United Nations Ukraine, "[Holding on to Humanity: Ukraine Enters the Fifth Year of Full-Scale War](#)", February 2026.
14. Copernicus Climate Change Service, "[Surface air temperature for January 2026](#)", February 2026.
15. Central Geophysical Observatory Borys Sreznovskyi, "[Climatic data for Ukraine](#)", accessed 2026.
16. Reuters, "[Russian air attack knocks out power for over a million Ukrainians](#)" January 2026.
17. OCHA, "[Ukraine: Humanitarian Situation Snapshot, January to February 2026](#)", March 2026.
18. ACAPS, "[Ukraine: Humanitarian access update](#)", February 2026.



This report is made possible by the generous support of the American people through the United States Government. The contents are the responsibility of IMPACT Initiatives and do not necessarily reflect the views of the United States Government.