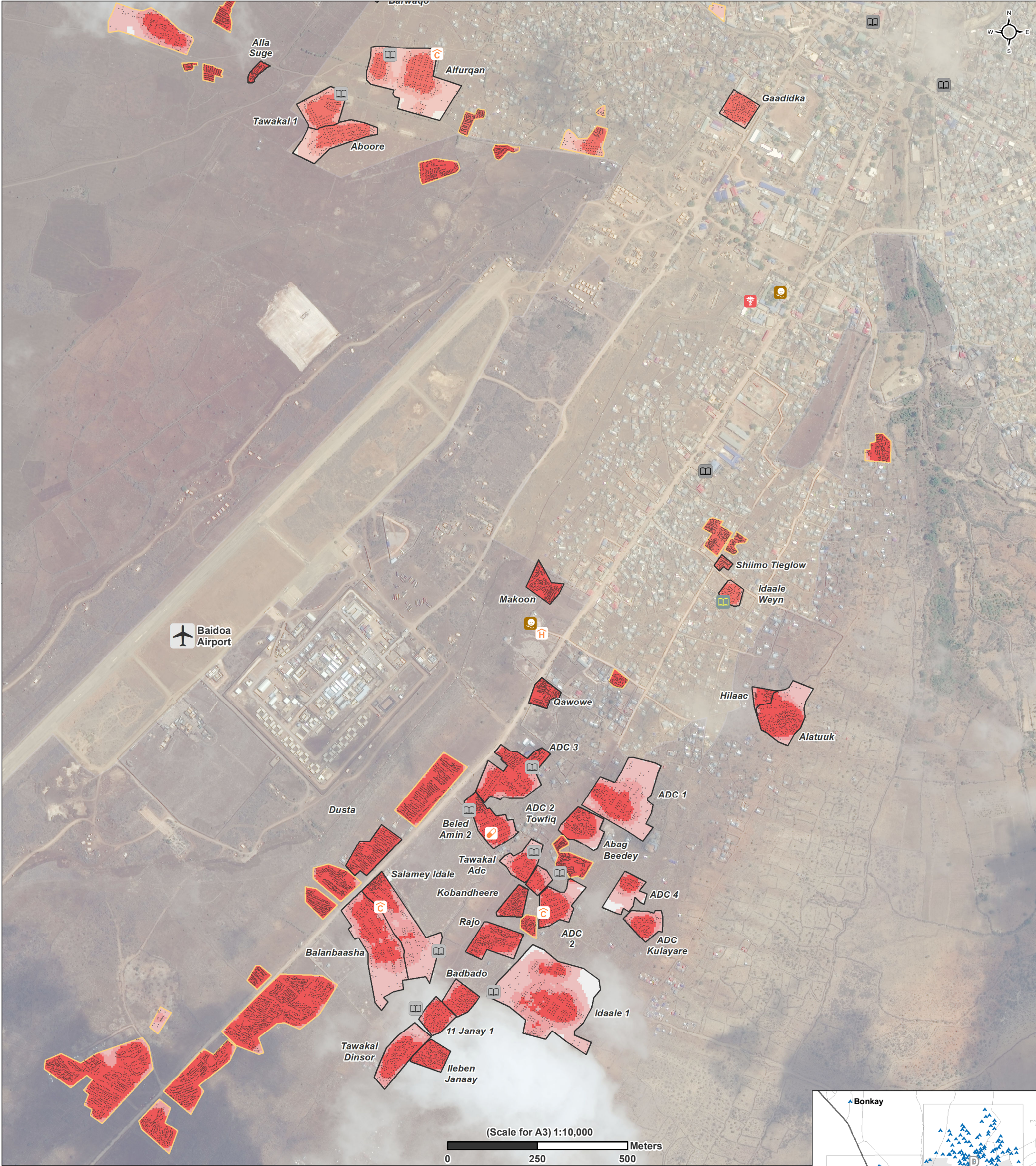


# SOMALIA – Baidoa IDP Settlement Profiling

## Baidoa A: Settlement shelter density – April 2017

For Humanitarian Purposes Only  
Production date: 20 June 2017



**Structures**

- Shelters (10,934)
- Qu'ranic school (1)
- Primary school (9)
- Secondary school (3)
- Nutrition center (2)
- Health centre (1)
- Primary health care unit (3)
- Pharmacy (1)
- Referral health centre (1)



**Shelter Density (shelters/hectare)**

- <= 50
- 51 - 100
- 101 - 594
- Empty space

**Boundaries**

- Assessed IDP settlements
- Remotely identified IDP settlement (Not yet field validated)

**Funded by**



Data sources:  
Settlements and Facilities: REACH field team  
Imagery and Shelter points: UNOSAT 21APR2017  
Administrative boundaries, Roads, Towns: UNDP  
Coordinate System: WGS 1984 UTM Zone 38N  
Contact: reach.mapping@impact-initiatives.org  
File: reach\_som\_map\_baidoa\_a\_idp\_shelter\_density\_2017\_a3  
Note: Data, designations and boundaries contained on this map are not warranted to be error-free and do not imply acceptance by the REACH partners, associates, donors mentioned on this map.

