

Adamawa and Borno - Water, Sanitation and Hygiene (WASH)

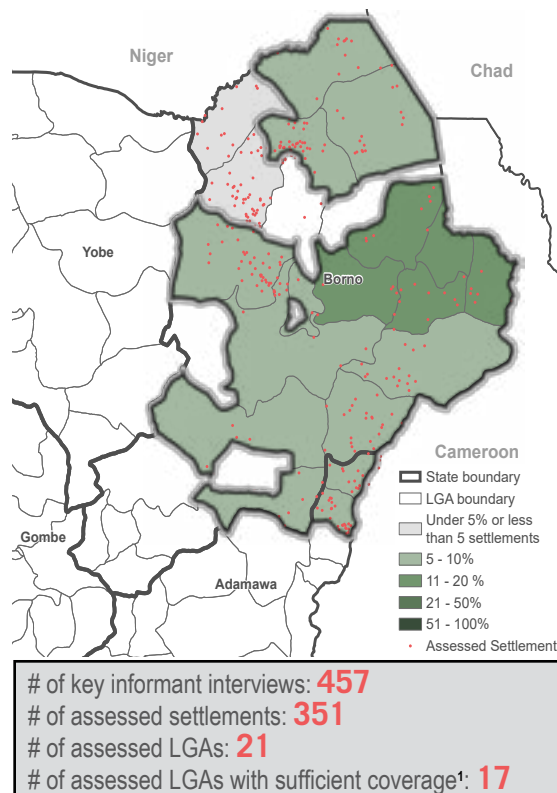
Assessment of Hard-to-Reach Areas in Northeast Nigeria

February 2021

Introduction

The continuation of conflict in Northeast Nigeria has created a complex humanitarian crisis, rendering sections of Borno and Adamawa states as hard to reach. To address information gaps facing the humanitarian response and inform humanitarian actors on the demographics of households in hard-to-reach areas of Northeast Nigeria, as well as to identify their needs, access to services and movement intentions, REACH has been conducting monthly assessments of hard-to-reach areas in Northeast Nigeria since November 2018.

Proportion of settlements assessed, February 2021



Methodology

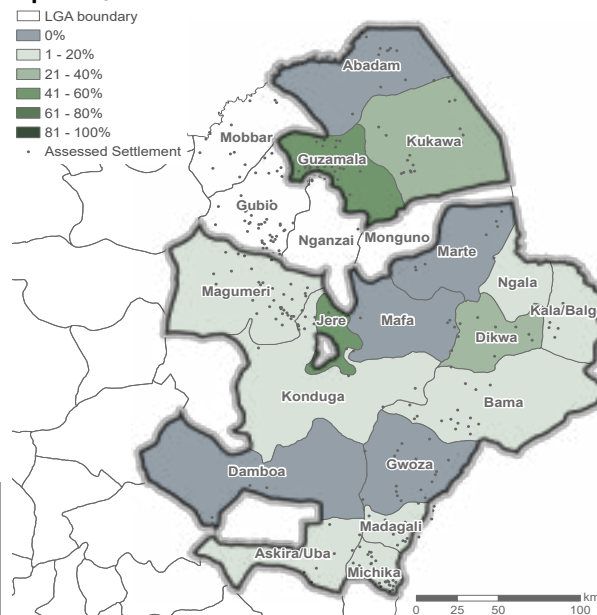
Using the Area of Knowledge (AoK) methodology, REACH remotely monitors the situation in hard-to-reach areas through monthly multi-sector interviews in accessible Local Government Area (LGA) capitals with key informants (KIs) who are either (1) newly arrived internally displaced persons (IDPs) who have left a hard-to-reach settlement in the last month or (2) KIs who have had contact with someone living or having been in a hard-to-reach settlement in the last month (traders, migrants, family members, etc.).

If not stated otherwise, the recall period for each question is set to one month prior to the last information the KI has had from the hard-to-reach area. Selected LGAs are purposively sampled and are interviewed on settlement-wide circumstances in hard-to-reach areas, rather than their individual experiences. Responses from KIs reporting on the same settlement are then aggregated to the settlement level. The most common response provided by the greatest number of KIs is reported for each settlement. When no most common response could be identified, the response is considered as 'no consensus'. While included in the calculations, the percentage of settlements for which no consensus was reached is not displayed in the results below.

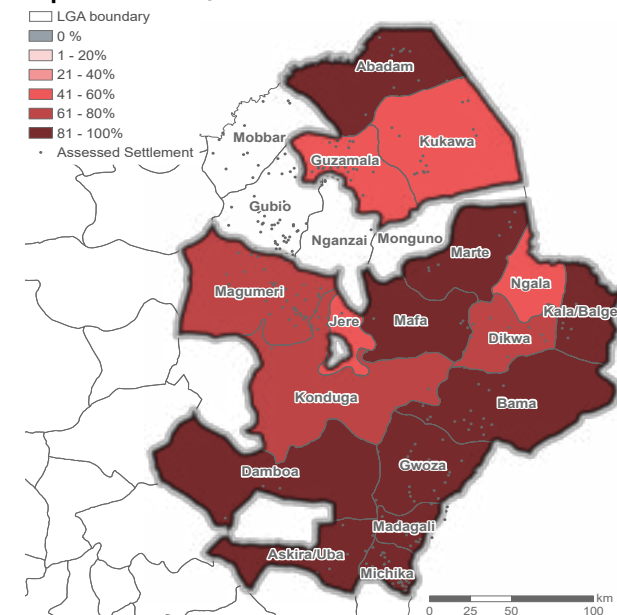
Results presented in this factsheet, unless otherwise specified, represent the proportion of settlements assessed within an LGA. Findings are only reported on LGAs where at least 5% of populated settlements and at least 5 settlements in the respective LGA have been assessed. **The findings presented are indicative of broader trends in assessed settlements in February 2021, and are not statistically generalisable².** Due to precautions related to the COVID-19 outbreak, data was collected remotely through phone based interviews with assistance from local stakeholders. Data collection took place from February 1st to February 26th.

Water sources

Proportion of assessed settlements where the main reported drinking water source was an improved³ water source (e.g. protected well, tapstand):



Proportion of assessed settlements where the main reported drinking water source was an unimproved water source (e.g. surface water, unprotected well):



¹ The most recent dataset on grid3.gov.ng/datasets has been used as the reference for settlement names and locations, and adjusted to account for deserted villages based on information shared by OCHA

² Due to changes in migration patterns, the specific settlements assessed within each LGA vary each month. Changes in results reported in this factsheet, compared to previous factsheets, may therefore be due to variations in the assessed settlements instead of changes over time.

³ Improved water is defined as a type of water source that, by nature of its construction or through active intervention, is likely to be protected from outside contamination, in particular from contamination with fecal matter



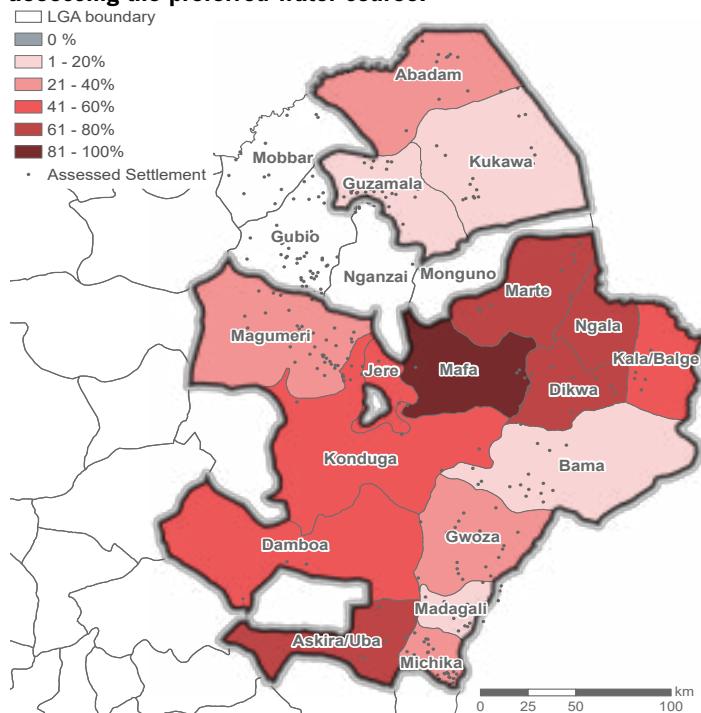
Adamawa and Borno - Water, Sanitation and Hygiene (WASH)

Assessment of Hard-to-Reach Areas in Northeast Nigeria

February 2021

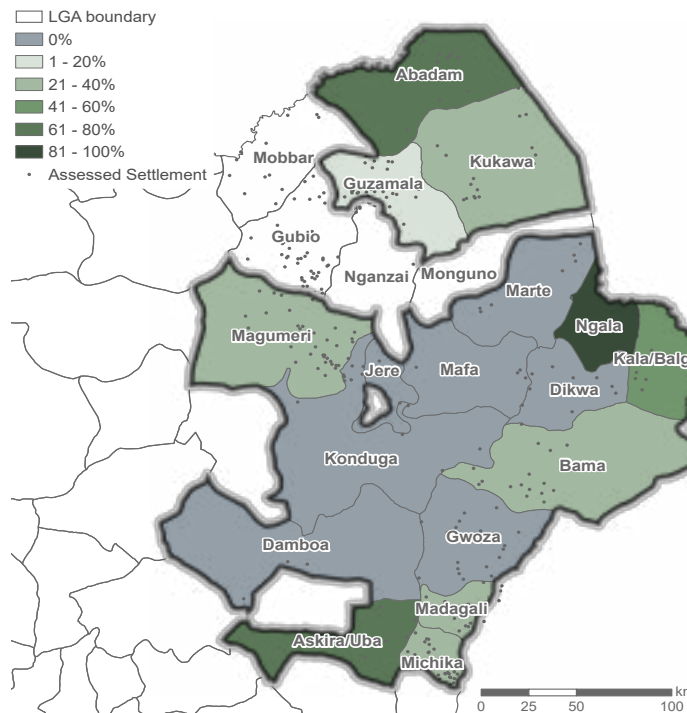
Safe water access

Proportion of assessed settlements where it was reported that safety concerns prevented at least some of the population from accessing the preferred water source:



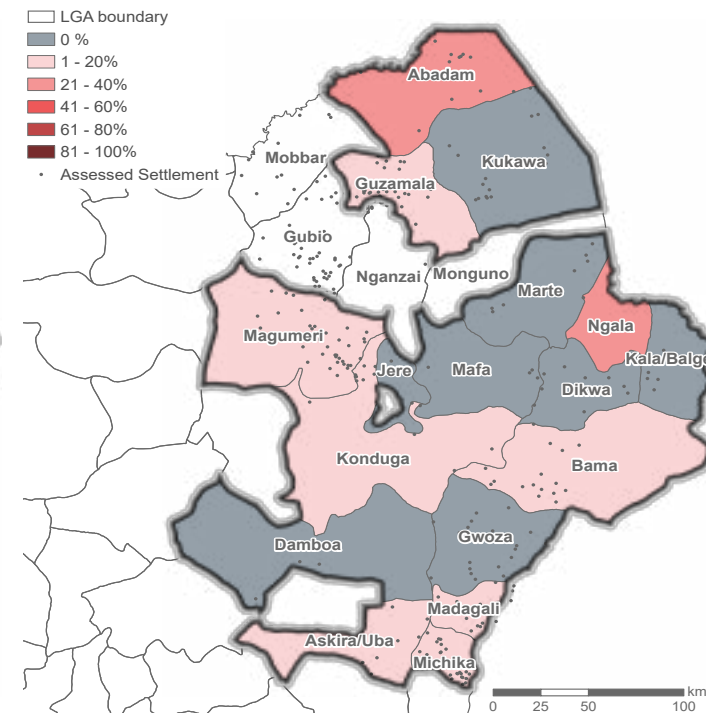
Latrine use

Proportion of assessed settlements where it was reported that least some people were using latrines:



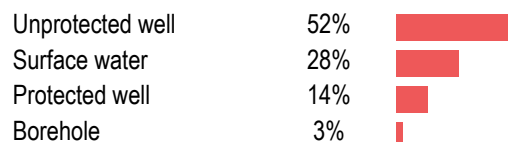
WASH related health concerns

Proportion of assessed settlements where waterborne diseases were reported to be the main perceived health problem:



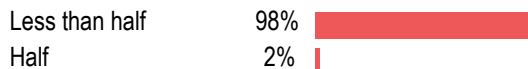
Drinking water source

Most commonly reported main drinking water sources, by % of assessed settlements:

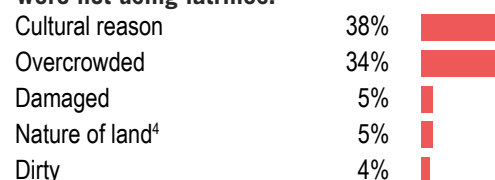


Latrine access

Of the assessed settlements where latrine usage was reported (53%), the estimated proportion of people in the settlement who are using latrines:

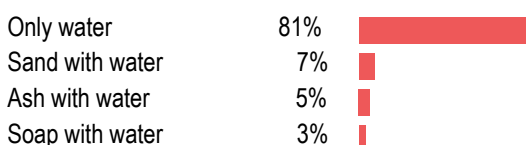


Of the assessed settlements where it was reported that some people were not using latrines (47%), the most commonly reported reasons why people were not using latrines:



Hand - washing practice

Main hand-washing materials used in the settlements, by % of assessed settlements:



⁴ Nature of land like rocks, waterloggings preventing them from constructing latrines.