



# IDP Camp Profile - Debaga staduim

Erbil, Iraq  
August 2016

Management agency: n/a  
Manager/Focal point: Rezgar Obeid  
Phone number: 7515019244  
Email: n/a  
Registration actor: BCF

## Summary

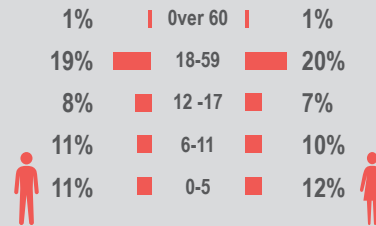
This profile provides an overview of conditions in Debaga staduim camp. Primary data was collected through household surveys on 23-08-16. This was the first round of data collection for this camp. Households were randomly sampled to a 95% confidence and 10% margin of error, based on population figures provided by CCCM. In some cases, additional information from camp managers has been used to support findings.

## Camp Overview

# of individuals: 650  
# of households: 3502  
Date opened: 28-03-16  
Occupied number: n/a  
Ongoing extension: n/a  
Planned capacity: n/a  
Camp area: 145,736

## Demographics

50% male / 50% female

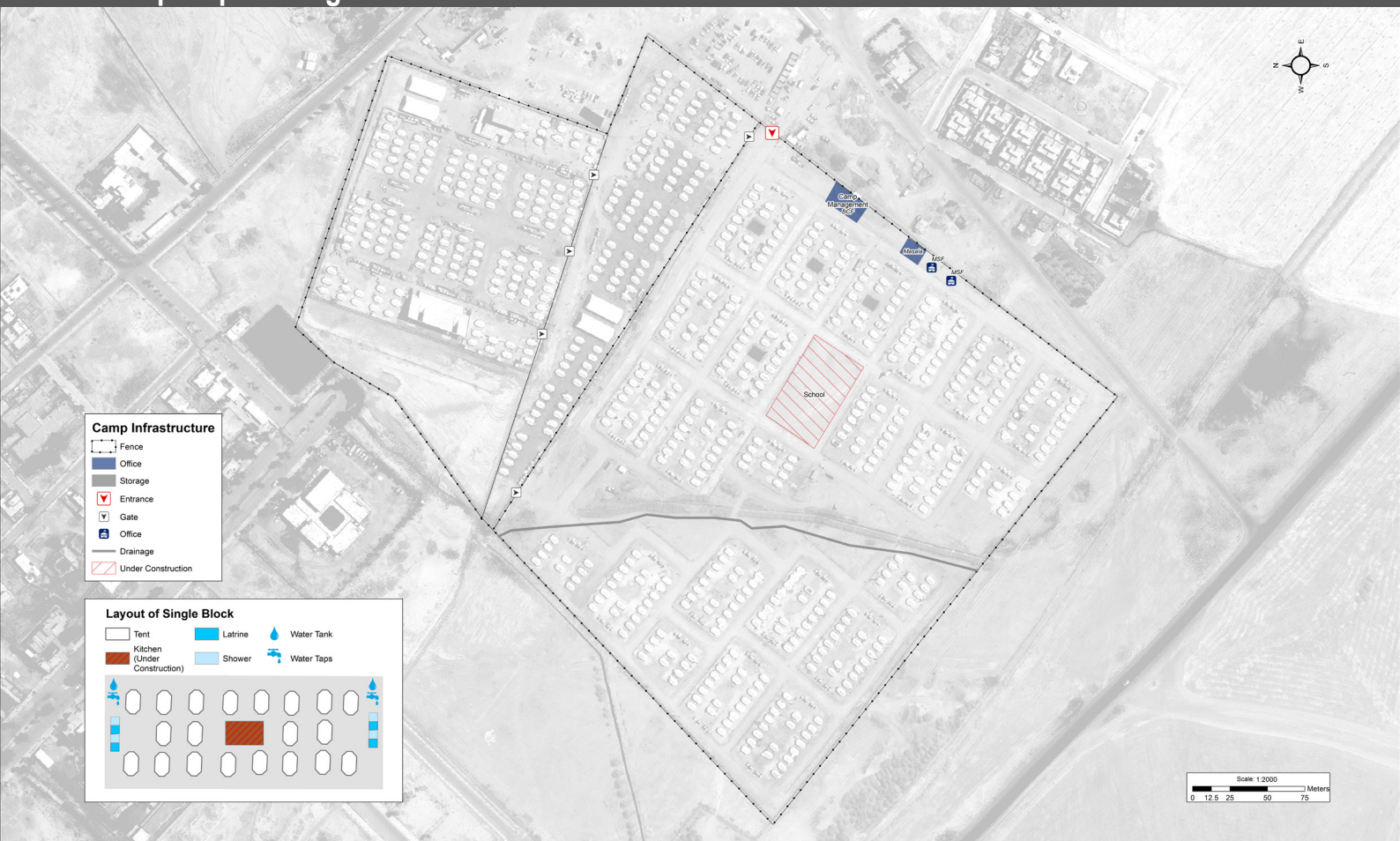


## Location Map



## IDP Camp Map - Debaga staduim

Lat. 35° 52' 12.07" N Long. 43° 48' 50.286" E



## Sectoral Minimum Standards

		Target	Previous Round	Current Round	Achievement
Education	% of children aged 6-11 attending formal school	100%	n/a	4%	●
	% of children aged 12-17 attending formal school	100%	n/a	4%	●
Food	% of households accessed Family Food Parcel or equivalent in the past month	100%	n/a	98%	●
Health	Health services are available on-site or within walking distance	Yes	n/a	Yes	
CCCM	Average open area per household	min. 30m <sup>2</sup>	n/a	n/a	●
Protection	% of IDPs registered on an individual basis (MODM/DDM)	100%	n/a	99%	●
	% of households accessed shelter assistance since arrival at the camp	100%	n/a	89%	●
	Average covered area per person	min. 3.5m <sup>2</sup>	n/a	3.7m <sup>2</sup>	●
Shelter	Average number of individuals per shelter	max.5	n/a	5	●
	# of persons per latrine	max. 20	n/a	27	●
	# of persons per shower	max. 20	n/a	27	●
WASH	Frequency of solid waste disposal at least weekly	min. weekly	n/a	Yes	●

\*GPS tracking of camp infrastructure was not possible this round due to restrictions from authorities. Area calculations subsequently could not be determined.

Targets based on minimum standards agreed with the CCCM Cluster, Iraq. Findings based on household-level data, enumerator field observations, and camp management documentation

● Minimum standard reached, ● More than 50% minimum standard reached, ● Less than 50% of minimum standard reached or not at all





# IDP Camp Profile - Debaga staduim

Erbil, Iraq  
August 2016

Management agency: n/a  
Manager/Focal point: Rezgar Obeid  
Phone number: 7515019244  
Email: n/a  
Registration actor: BCF

## Shelter

### Top three observed shelter types\*

Permanent structure	100%	
n/a	n/a	
n/a	n/a	

\*Households were asked to select all shelter typologies within household.

### Winterisation and NFI items

70%	reported a second fly sheet
17%	reported access to a heater
60%	reported at least one blanket per person
53%	reported at least one mattress per person
1.3	average number of carpets
2%	reported shelter provides warmth in winter

### Hazards

3%	reported exposed electrical cables at site
----	--

### Shelter Improvement

0%	reported making own improvements to their shelter
----	---

## Community Organisation

### IDP committees

65%	reported awareness of IDP committee(s)
-----	--

### Complaints mechanism

95%	reported awareness of complaints mechanism
-----	--

## Protection

### Family Separation

0%	reported hosting unaccompanied or separated minors
10%	reported that other family members intended to join them

### Vulnerable groups

Pregnant / lactating women	9%	
Chronically ill individual(s)	3%	
Disabled individual(s)	2%	
Female headed households	10%	

### Intentions

5%	planned to move to a different location in next 3 months
----	--

### Restrictions

91%	reported entry or exit restrictions during daylight hours
-----	---

## Food Security and Coping Strategies

### Reported access to food assistance

98%	accessed food assistance in past month
91%	received Public Distribution System (PDS) in past month

### Top three food consumption coping strategies

Cheaper	71%	
Smaller meals	43%	
Less meals	42%	

### Top three reported livelihood coping strategies

Spent savings	62%	
Charitable Donations	43%	
Debt	30%	

## WASH

### Latrines and showers

99%	reported public or communal latrines
96%	public/communal latrines lockable from the inside
8%	public/communal latrines with functioning lighting

### Top three reported methods of waste removal

Collected	100%	
n/a	n/a	
n/a	n/a	

### Reported drinking water sources

0%	connection inside the home to collective water storage
0%	connection inside the home to private water storage
100%	communal water tap outside the shelter

### Access to water

16%	reported 24 consecutive hours without access to water in the past month
-----	---

## Household Income

13%	reported as being economically inactive
-----	---

### Top three income sources\*:

Humanitarian Aid	57%	
Government Pension	14%	
No livelihood	13%	

\*Households were asked to select all income sources within household.