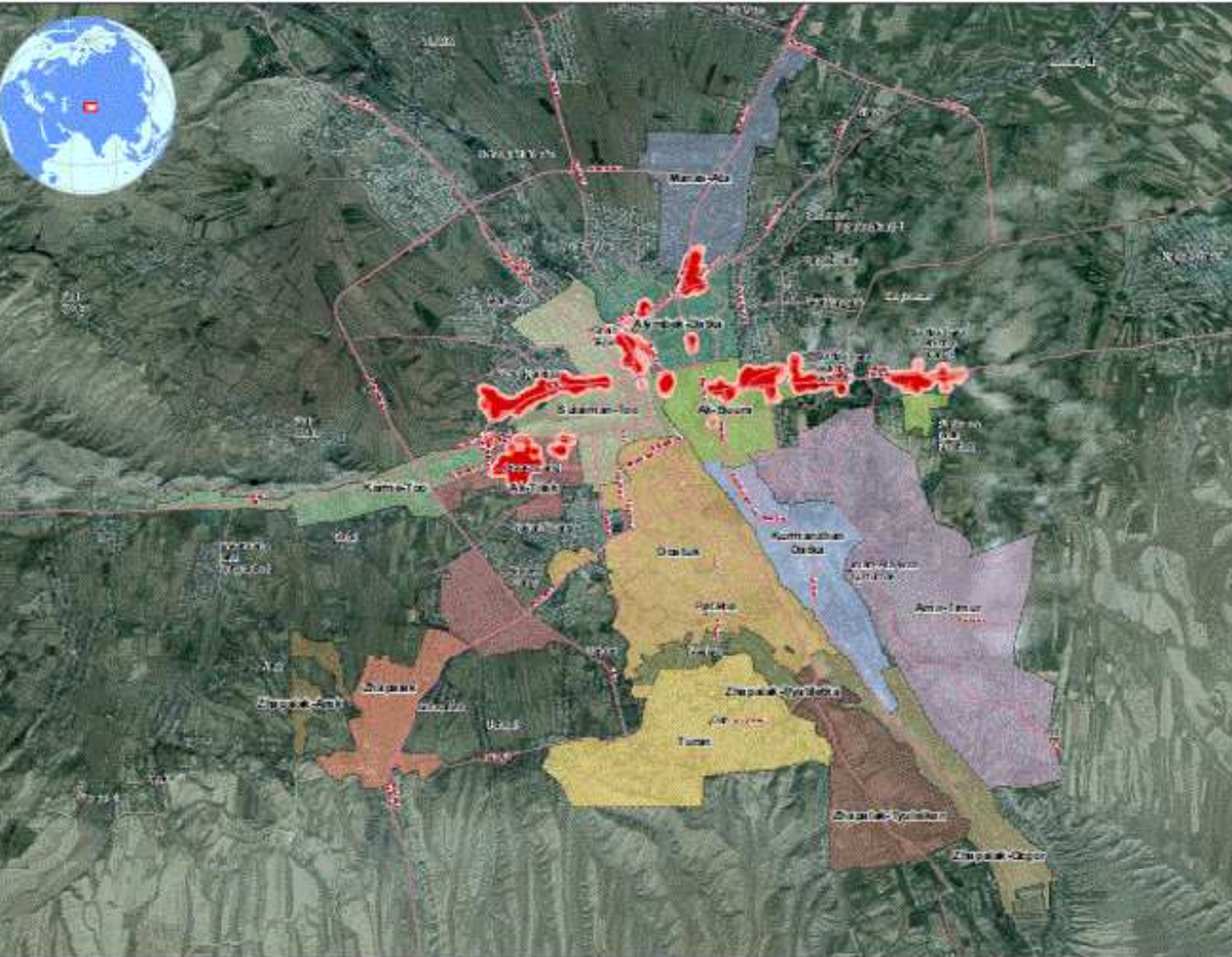


KYRGYZSTAN: Damage Assessment in Osh City

8 July 2010



Legend

Roads
 — Main roads

Damage Density

 High
 Low

Note: Damage assessment is based on photo-interpretation of post-disaster satellite imagery recorded over the affected sites on 18 and 21 June 2010 (UNSTAR/UNOSAT).

Map Doc Name:
 UNOSAT_Damage_Assessment_AD_27072010

GUIDE Number:
 NA

Creation Date:
 27 July 2010

Projection/Datum:
 Geographic/GCS84

Web Resource:
<http://ghisnet.unosat.org/en/info>

Map data source(s):
 Google Earth, OCHA, OpenStreetMap
 Damage data: UNSTAR/UNOSAT

Osh City data:
 ACTED, European Commission

Within the framework of the project "Cross Border Community Based Disaster Preparedness and Risk Mitigation for Vulnerable Rural Population of the Fergana Valley" funded by ECHO.



Disclaimer:
 The boundaries and names shown and the designations used on this map do not imply official endorsement or acceptance by the United Nations.

