



IDP Camp Profile - Debaga

Erbil, Iraq
December 2015

Management agency: BCF
Manager/Focal point: Rezgar obeid
Phone number: 7515019244
Email: dibaga.camp@barzanifoundation.org
Registration actor: BCF

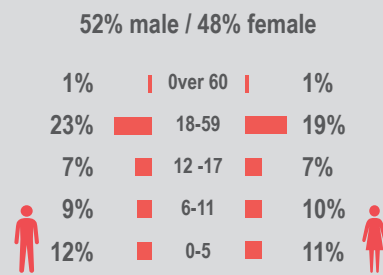
Summary

This profile provides an overview of conditions in Debaga camp. Primary data was collected through household surveys on 21/12/2015. This was the first round of data collection for this camp. Households were randomly sampled to a 95% confidence and 10% margin of error, based on population figures provided by CCCM. In some cases, additional information from camp managers has been used to support findings.

Camp Overview

of individuals: 3532
of households: 673
Date opened: 19/10/2015
Accommodation: 1000
Ongoing extension: no
Planned capacity: 1130
Camp area: 0.13 km²

Demographics

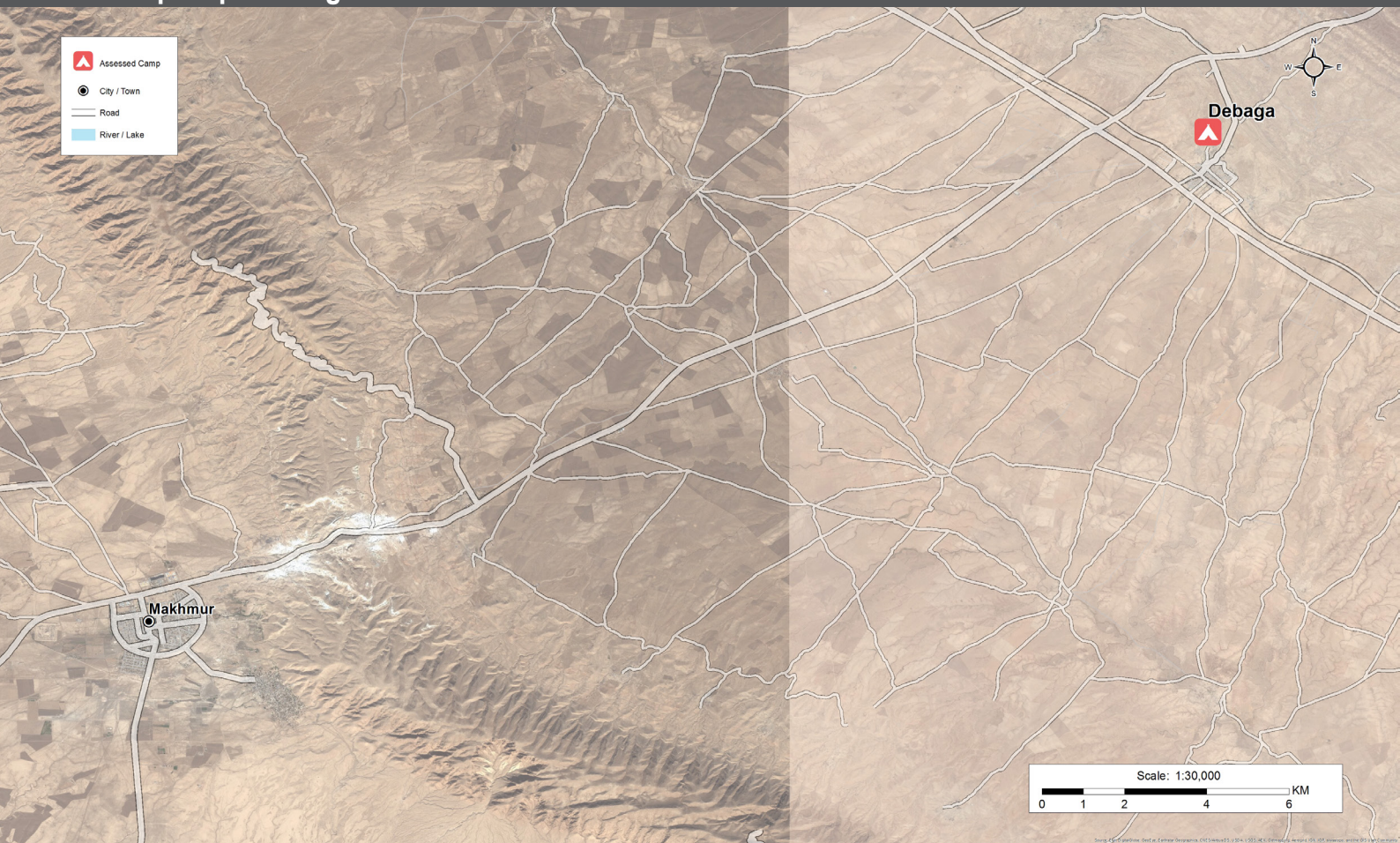


Location Map



IDP Camp Map - Debaga

Lat.35° 52' 56.374" N Long. 43° 48' 32.748" E



Sectoral Minimum Standards

		Target	Previous Round	Current Round	Achievement
Education	% of children aged 6-11 attending formal school	100%	n/a	77%	●
	% of children aged 12-17 attending formal school	100%	n/a	46%	●
Food	% of households accessed Family Food Parcel or equivalent in the past month	100%	n/a	100%	●
Health	Health services are available on-site or within walking distance	yes	n/a	yes	●
CCCM	Average open area per household	min. 30m ²	n/a	n/a	
Protection	% of IDPs registered on an individual basis (MODM/DDM)	100%	n/a	98%	●
	% of households accessed shelter assistance since arrival at the camp	100%	n/a	100%	●
	Average covered area per person	min. 3.5m ²	n/a	n/a	
Shelter	Average number of individuals per tent	max.5	n/a	4	●
	# of persons per latrine	max. 20	n/a	4	●
	# of persons per shower	max. 20	n/a	4	●
WASH	Frequency of solid waste disposal at least weekly	min. weekly	n/a	yes	●

Targets based on minimum standards agreed with the CCCM Cluster, Iraq. Findings based on household-level data, enumerator field observations, and camp management documentation
● Minimum standard reached, ● More than 50% minimum standard reached, ● Less than 50% of minimum standard reached or not at all



CCCM CLUSTER
SUPPORTING DISPLACED COMMUNITIES

For more information on this profile please contact:
CCCM Cluster: iraqimo@cccmcluster.org
REACH Initiative: melissa.meinhart@reach-initiative.org

REACH An initiative of
IMPACT Initiatives
ACTED and UNOSAT



IDP Camp Profile - Debaga

Erbil, Iraq
December 2015

Management agency: BCF
Manager/Focal point: Rezgar obeid
Phone number: 7515019244
Email: dibaga.camp@barzanifoundation.o
Registration actor: BCF

Shelter

Top three observed shelter types*

Permanent structure	100%	<div></div>
n/a	n/a	
n/a	n/a	

*Households were asked to select all shelter typologies within household.

Winterization and household items

17%	reported a second fly sheet
100%	reported at least one stove or space heater
26%	reported at least one blanket per person
1	average number of carpets per HH
6	average number of mattresses per HH

Hazards

13%	reported exposed electrical cables at site
-----	--

Shelter Improvement

6%	reported making own improvements to their shelter
194 USD	average total reported cost of shelter improvements

*Conversion rate: 1 USD = 1,106.37 IQD

Households reporting flooding in past three months, by type

No flooding	94%	<div></div>
Flooding (temporary damage)	6%	<div></div>
Flooding (permanent damage)	0%	

Household Income

0%	reported a household income of under 10 USD in the past month (including aid, gifts or pension)
74%	reported humanitarian aid within top three sources of livelihood in past month

Protection

Family Separation

0%	reported hosting unaccompanied or separated minors
0%	reported that other family members intended to join them

Vulnerable groups

Pregnant / lactating women	39%	<div></div>
Chronically ill individual(s)	5%	<div></div>
Disabled individual(s)	2%	<div></div>

Intentions

1%	planned to move to a different location in next 3 months
----	--

Restrictions

0%	reported entry or exit restrictions during daylight hours
----	---

Documentation

12%	reported missing civil documents
-----	----------------------------------

Food Security and Coping Strategies

Reported access to food assistance

100%	accessed food assistance in past month
49%	received Public Distribution System (PDS) in past month

Top three reported food consumption coping strategies

Cheaper Food	68%	<div></div>
Less meals	30%	<div></div>
Smaller meals	18%	<div></div>

Top three reported livelihood coping strategies

Spent savings	70%	<div></div>
Bought food on credit	37%	<div></div>
Spent less money	24%	<div></div>

WASH

Latrines and showers

100%	reported access to functional latrines
100%	reported access to functional showers

Top three reported methods of waste removal

Collected	99%	<div></div>
Communal Bin	1%	<div></div>
n/a	n/a	

Primary reported drinking water source

0%	connection inside the home to collective water storage
100%	connection inside the home to private water storage
0%	communal water tap outside the shelter
0%	purchased from shop
0%	open well
0%	other source

Access to water

1%	reported 24 consecutive hours without access to water in the past month
----	---

Community Organisation

IDP committees

93%	reported awareness of IDP committee(s)
-----	--

Of these, IDPs reported that camp committees were as follows:

95%	representative of camp composition
0%	included female representation
43%	had elected representative(s)
73%	had a complaints mechanism

Access to fire-extinguishers

0%	reported awareness of available fire-extinguishers
----	--