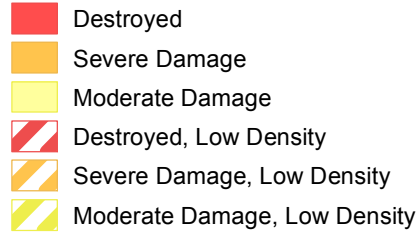


Syria - City of Daraa Shelter Damage Assessment as of 19th April 2016

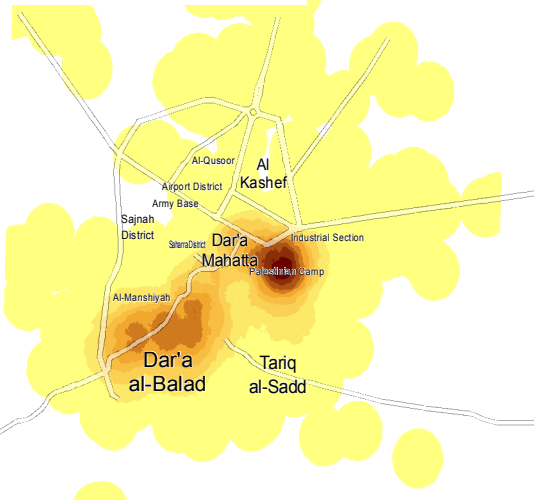
For Authorized Distribution Only - For Humanitarian Purposes Only
Production Date: 15th July 2016



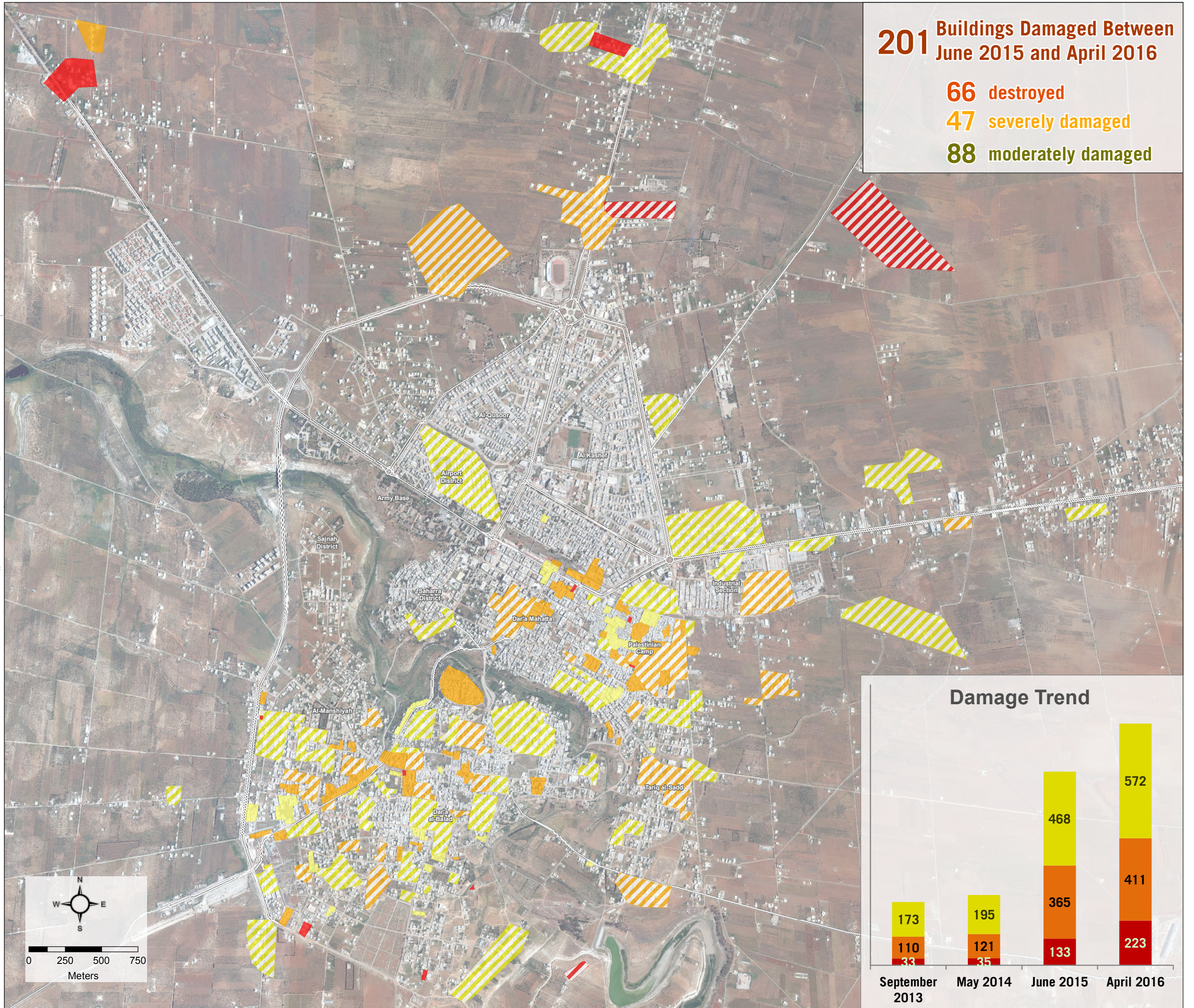
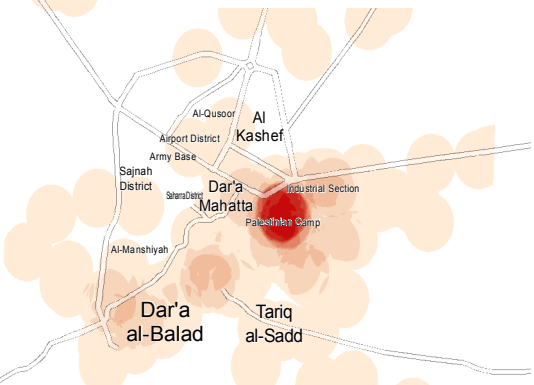
Damage Zones 16.04.2016



Damage Density as of 19.04.2016



Damage Increase From 04.06.2015 to 19.04.2016



201 Buildings Damaged Between June 2015 and April 2016

- 66** destroyed
- 47** severely damaged
- 88** moderately damaged

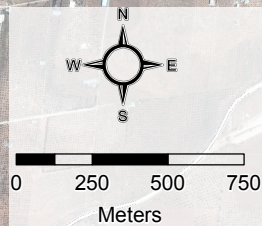
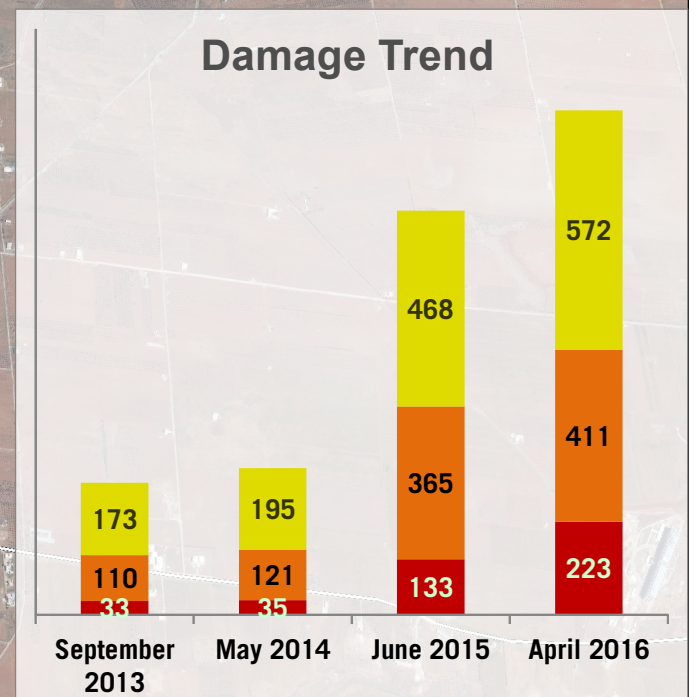


Image copyright: DigitalGlobe, Imagery provided by: U.S. Department of State, Humanitarian Information Unit, NextView License - WV02 - Resolution 0.50 cm - Date: 19.04.2016
Shelter Damage Assessment Data: UNOSAT/REACH
Projection: WGS 1984 UTM Zone 37N
File: REACH_SYR_Map_Daraa_ASMT_SDAcity_15JUL2016_A3

Note: Data, designations and boundaries contained in this map are not warranted to be error-free and do not imply acceptance by the REACH partners, donors and associated persons mentioned in this map.