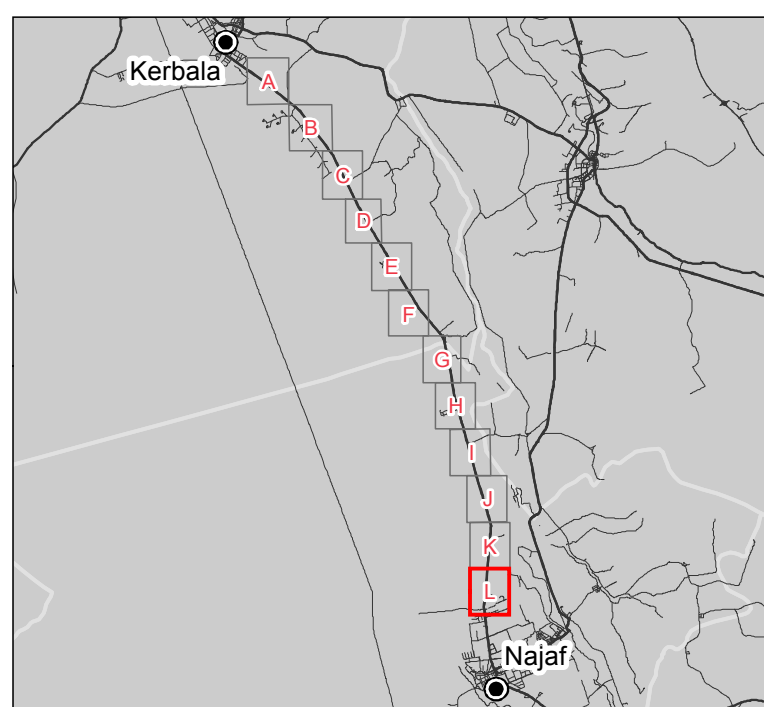


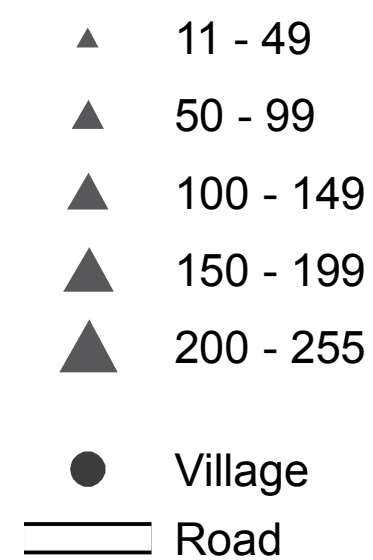
## Informal IDP sites along the Kerbala-Najaf Highway



### Red Flags



### Site Population (Individuals)



The CCCM Informal Site Assessment is an iterative assessment led by the CCCM Cluster, which seeks to conduct a full census of all informal IDP sites in accessible areas of Iraq. The fifth round of informal site assessment in central and southern Iraq was conducted between February and April 2016. Each Governorate was divided into mapped grids with plotted coordinates of previously identified sites. Sites were identified based on existing data from previous rounds, together with information from communities. Each site was assigned a unique identifier (SSID), in order to facilitate the organization of data collection. This round of the Site Assessment integrated a red-flag alert mechanism, based on 20 multi-sector indicators. The total number of red flag concerns is presented as a score, and individual sites are coloured on a traffic-light scale, based on the number of red flags.

Thematic Data: 21/04/2016 - REACH  
Administrative boundaries: GADM  
Background imagery: Airbus 14/03/2016

Projection: WGS 1984 UTM Zone 38N

Contact : [iraq@reach-initiative.org](mailto:iraq@reach-initiative.org)  
File: [IRQ\\_Map\\_IDP\\_Najaf\\_InformalSites\\_MapL\\_30MAY2016](#)

Note: Data, designations and boundaries contained on this map are not warranted to error-free and do not imply acceptance by the REACH partners, associated, donors mentioned on this map.