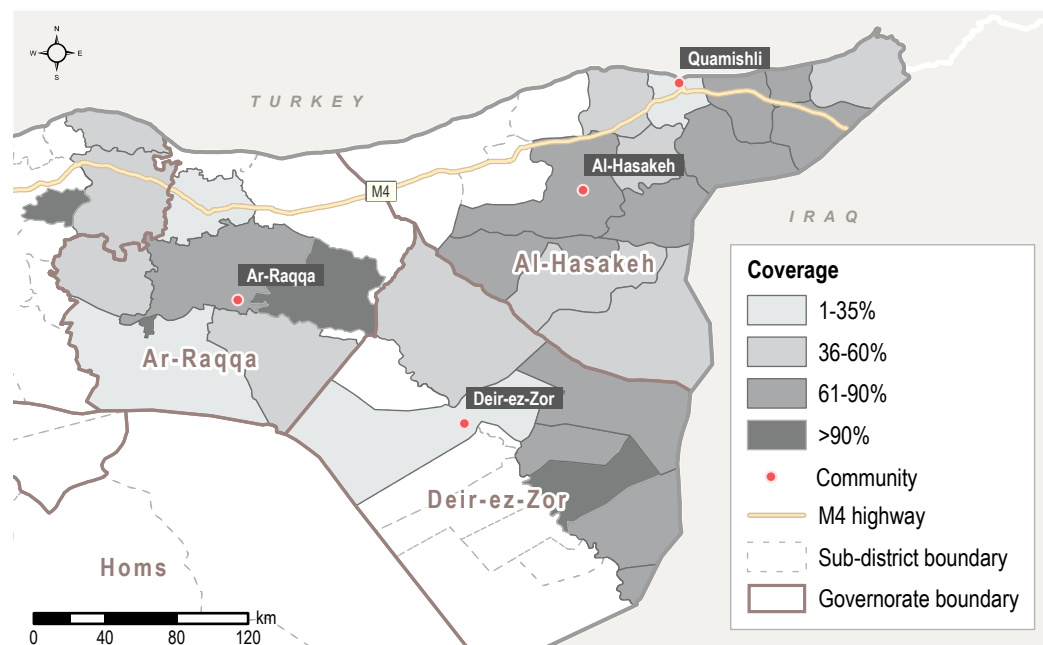


Introduction and Methodology

HSOS is a monthly assessment that provides comprehensive, multi-sectoral information about the humanitarian conditions and priority needs inside Syria. This factsheet presents a thematic review based on the HSOS assessment of the priority needs and humanitarian assistance, economic conditions, living conditions, access to basic services, COVID-19 situation, and security and protection situation in Northeast Syria (NES). Sector-specific indicator findings by location can be found on the [HSOS dashboard](#).

The assessment is conducted using a key informant (KI) methodology at the community level. REACH enumerators are based inside Syria and interview three to five KIs per assessed location, either directly or remotely (via phone). KIs are chosen based on their community-level and sector-specific knowledge. This factsheet presents information gathered in **1,187 communities** across Aleppo¹ (162 communities), Ar-Raqqa (261 communities), Al-Hasakeh (684 communities), and Deir-ez-Zor (80 communities) governorates. **Data was collected between 1-14 of March 2021** from **3,726 KIs** (19% female). Unless specified by an endnote, all indicators refer to the situation in the 30 days prior to data collection (February 2020/ March 2021). Findings are indicative rather than representative, and should not be generalized across the population and region. Findings that are calculated based on a subset of the community are indicated by the following footnote ♦, with each subset specified in the endnotes.

The complete monthly HSOS dataset is available on the [REACH Resource Centre](#).



Key Highlights

March saw a significant increase in prices of basic food and non-food items (NFIs) impacting people's ability to meet their needs. Further, the high cost and lack of medicines resulted in negative coping strategies for households in need of healthcare, while poor sanitation conditions increased households' vulnerability to skin diseases.

- ♦ **Further increase in prices and reduced access to livelihoods from agriculture compounded economic hardship.** In March, the survival minimum expenditure basket (SMEB) increased by 24% compared to February representing a tripling of the value since March 2020.⁹ The hike in prices comes amid growing concerns about the ability of households to meet their basic needs. According to H NAP, 98% of people in NES live in extreme poverty.[▲] Further, H NAP finds that the percentage of people living below the SMEB is highest among daily workers.^a REACH findings show that the average daily labourer would need to work 78 days, or roughly 3 months, to earn the monthly cost of the basic SMEB. This compares to 71 days in February. Moreover, rainfall deficits affecting the growing season for wheat and barley crops reduced income opportunities for daily workers across the region.^b KIs reported the degradation of land and crop damage as a barrier to meeting basic needs in a third of communities.

- ♦ **Unaffordability and shortage of medicines as a result of border closures and economic crisis forced patients to reduce their medicine intake.** Medicines were a reported priority need in about half of assessed communities, while a lack of medicines and equipment was cited as a barrier to accessing healthcare in over 40% of communities. Health facilities have experienced a shortage of critical medicines after the closure of the Al Yarubiyah border crossing in January 2020 as reportedly neither crossline support nor NGO shipments through commercial crossings have been sufficient to supply the demand.^c Findings show that there is especially a need for cardio vascular medicines, antibiotics, and insulin as reported in 38%, 33%, and 32% of communities, respectively. However, even when medicines were available, households struggled to afford them. Prices have increased as pharmacies have been forced to purchase their supply in US Dollars (USD) following the fluctuations of the Syrian Pound (SYP).^d To cope with a lack of access to medicines, households reportedly resorted to taking a lower than the recommended dosage of medication in one fifth of communities.

- ♦ **A lack of healthcare access and adverse living conditions including inadequate sanitation increased households' vulnerability to skin diseases.** KIs in 96 communities reported the need for ointments and other medicines to treat skin diseases such as leishmaniasis. Leishmaniasis is a parasitic disease contracted from the bite of an infected sandfly and is widespread in NES. Health professionals in over 100 assessed communities identified leishmaniasis as a significant health issue. When left untreated, symptoms can be exacerbated resulting in life-long scars and serious disability.^e Yet, households in a third of assessed communities were reportedly unable to access services for parasitic infections treatment in both their own or nearby community. The spread of the disease is enhanced by poor sanitation conditions including the inadequate management of waste dumping places and dysfunctionality of sewage systems.^{e,f} KIs reported that a functioning sewage system and waste removal services were a priority need in over half and a third of communities, respectively.

HSOS Dashboard

For a breakdown of sector-specific indicators by location, please see the [HSOS dashboard](#). The interactive HSOS dashboard provides a monthly sectoral overview of key indicators disaggregated at the sub-district and community level.

▲ According to the standard used by H NAP, a person lives in extreme poverty when they live below 1.90 USD a day.



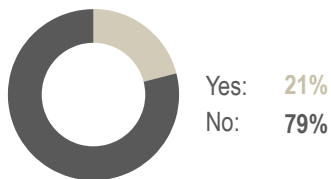
Priority Needs and Humanitarian Assistance



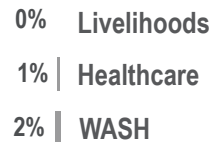
Most commonly reported **first, second, and third** and **overall** priority needs for residents (by % of communities) ^{2,3}

	FIRST	SECOND	THIRD	OVERALL	
1	Healthcare	Livelihoods	Livelihoods	Livelihoods	72%
2	Food	Healthcare	WASH	Healthcare	65%
3	WASH ^{▲▲}	WASH	Healthcare	WASH	53%

% of communities where any of the resident households were able to access humanitarian assistance



% of communities where KIs reported the presence of the following **types of assistance** for residents ⁴



Most commonly reported barriers that resident households faced in accessing humanitarian assistance (by % of communities) ^{4,♦}

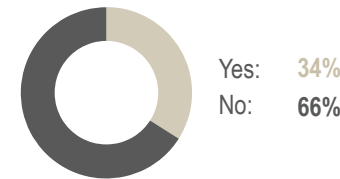
Communities reporting access to humanitarian assistance	Communities reporting no access to humanitarian assistance
Assistance provided was insufficient to cover all people in need 73% 1	96% No humanitarian assistance was available
Quantity of assistance provided to households was insufficient 57% 2	3% Not aware if assistance was available
Assistance provided was not relevant to all needs 48% 3	



Most commonly reported **first, second, and third** and **overall** priority needs for IDPs^{▲▲▲} (by % of communities) ^{2,3}

	FIRST	SECOND	THIRD	OVERALL	
1	Food	Healthcare	Livelihoods	Livelihoods	77%
2	Livelihoods	Food	Healthcare	Food	60%
3	Healthcare	Livelihoods	WASH	Healthcare	57%

% of communities where any of the IDP households were able to access humanitarian assistance



% of communities where KIs reported the presence of the following **types of assistance** for IDPs ⁴



Most commonly reported barriers that IDP households faced in accessing humanitarian assistance (by % of communities) ^{4,♦}

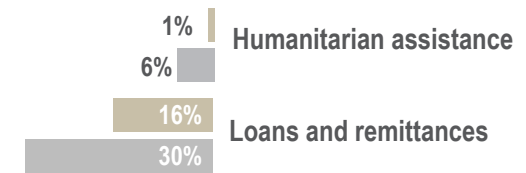
Communities reporting access to humanitarian assistance	Communities reporting no access to humanitarian assistance
Assistance provided was insufficient to cover all people in need 63% 1	97% No humanitarian assistance was available
Quantity of assistance provided to households was insufficient 53% 2	2% Not aware if assistance was available
Assistance provided was not relevant to all needs 48% 3	



Economic Conditions

Region	Estimated median monthly household expense for water for a household of six ^{5,6}	Estimated median monthly rent price for a two bedroom apartment ^{5,6}	Estimated median daily wage for unskilled labour ^{5,7,8}
Northeast Syria	11,000 SYP	30,000 SYP	4,500 SYP
Aleppo	3,000 SYP	22,500 SYP	5,000 SYP
Al-Hasakeh	16,000 SYP	35,000 SYP	4,500 SYP
Ar-Raqqa	1,500 SYP	25,000 SYP	4,000 SYP
Deir-ez-Zor	18,000 SYP	30,000 SYP	4,500 SYP

% of communities where KIs reported the presence of residents and IDP households relying on non-productive sources of livelihoods to meet their basic needs ⁴



Intersectoral findings on **unaffordability** hindering access to goods and services



KIs in **22%** of communities cited that **rent prices** were unaffordable for the majority of people



KIs in **40%** of communities cited the high cost of **fuel for generators** as a common challenge



KIs in **38%** of communities cited the high cost of **water trucking** as a common challenge



KIs in **84%** of communities cited the high cost of **food** as a common challenge ⁸



KIs in **86%** of communities cited the high cost of **health services** as a common challenge



KIs in **25%** of communities cited the high cost of **a private tutor** as a common challenge ⁸

% of communities where barriers to accessing income from agriculture to meet basic needs were reported ⁴

Residents

IDPs

28%

Lack of access to resources

11%

38%

Seasonality of production

10%

32%

Degradation of agricultural lands/ crop damage

6%

3%

High rates of livestock death

1%

79% and 93%

% of communities where KIs reported daily waged labour as a common source of income for **residents** and IDPs

78 days

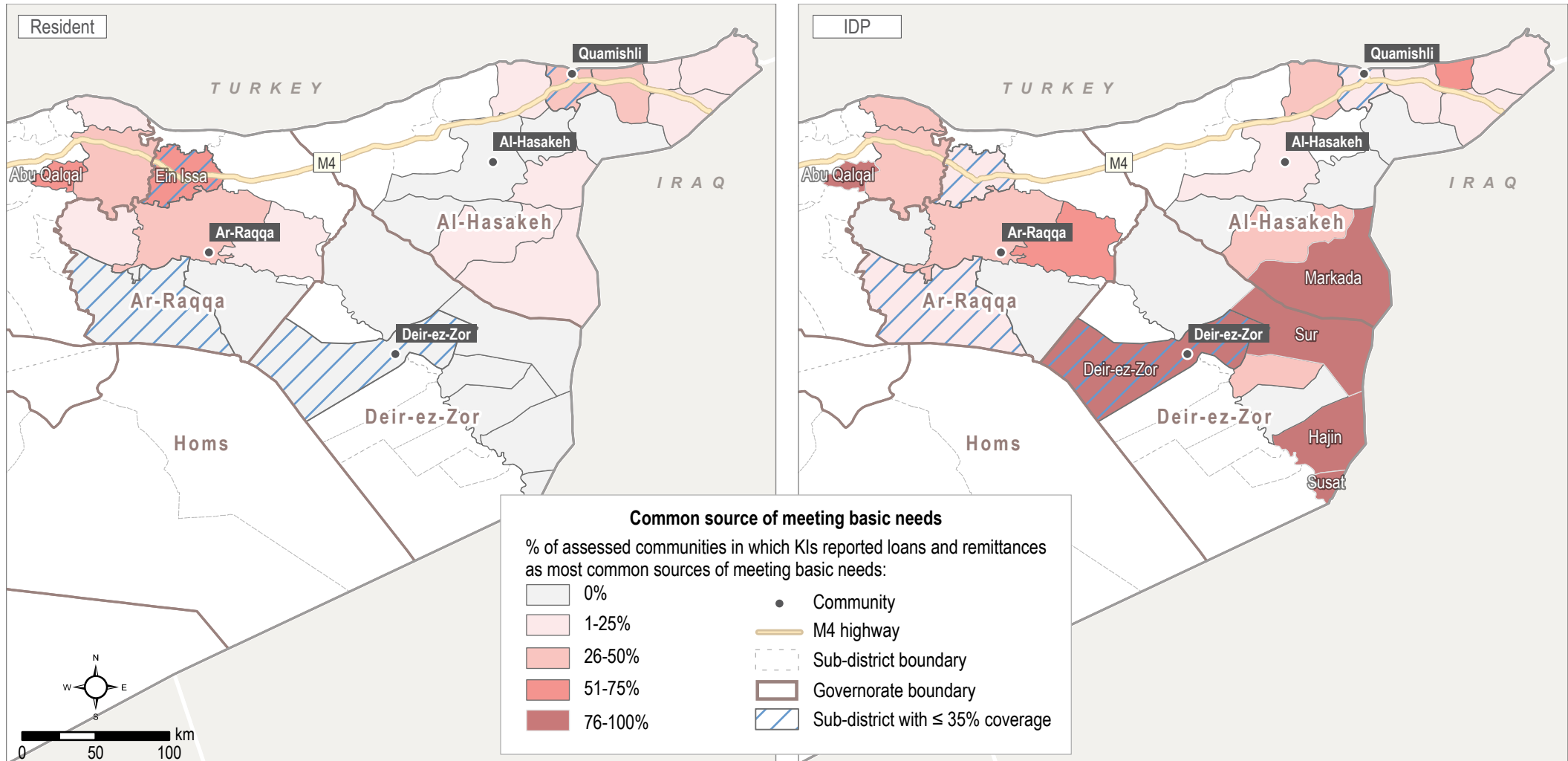
Number of days the average day labourer would need to work to earn the monthly cost of basic SMEB items ^{5,9}

90% and 73%

% of communities where KIs reported the **insufficient income of households** and lack of employment opportunities that match people's skills as barriers to meeting basic needs ⁸

% of communities where common livelihood sources from agriculture were reported ⁴

Livelihood source	Residents	IDPs
Food from crop production	41%	26%
Cash from crop production	70%	3%
Livestock products	77%	31%
Sale of livestock	56%	23%



Loans and Remittances as Common Sources of Meeting Basic Needs

Note on the map

These maps show the percentage of communities reporting loans and remittances as a common source of meeting basic needs. The highest percentage for the resident population was found in Abu Qalqal Sub-district. KIs in all assessed communities in Abu Qalqal, Deir-ez-Zor, Hajin, Markada and Susat Sub-districts reported loans and remittances as a source of meeting basic needs for IDPs.



Living Conditions

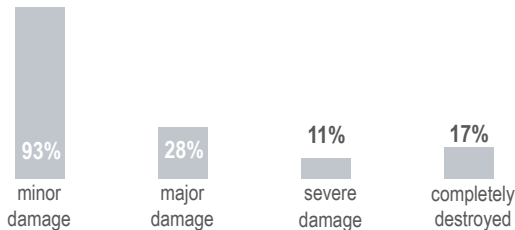


A lack of bathing facilities was reported as a shelter issue for IDPs in **15%** of communities



A lack of toilets was reported as a shelter issue for IDPs in **28%** of communities

Reported presence of occupied shelters with damage across communities where damages reported ^{5,10}



In **94%** of communities reportedly at least **80%** of the resident population owned their shelter

In **82%** of communities reportedly none of the IDP households owned their shelter

In **3%** of communities at least one fifth of the IDP population reportedly lived in unfinished or abandoned residential buildings

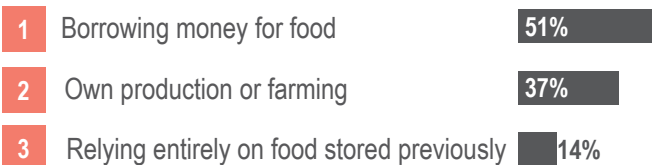
In **12%** of communities at least one fifth of the IDP population reportedly lived in tents



98% % of communities where KIs reported that households experienced barriers to accessing sufficient food ⁸

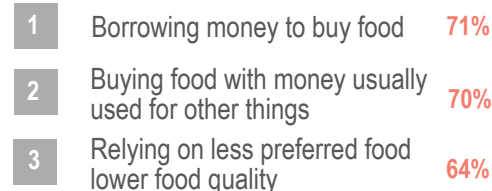
In 21% of these communities, KIs reported that the unavailability of certain food items was a challenge to accessing sufficient food ⁸

Commonly reported **sources of food** for households other than markets (by % of communities) ⁴



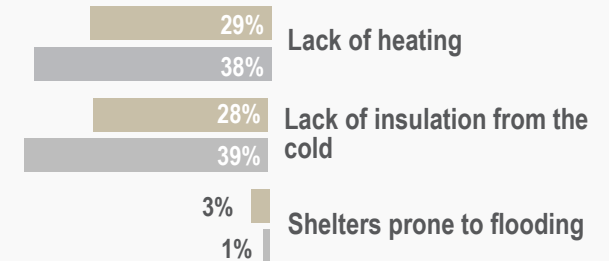
High price of suitable foods formula was the most commonly reported challenge to feeding young children (reported by KIs in **96%** of communities) ^{1,2}

Most commonly reported coping strategies for a lack of food (by % of communities) ⁴

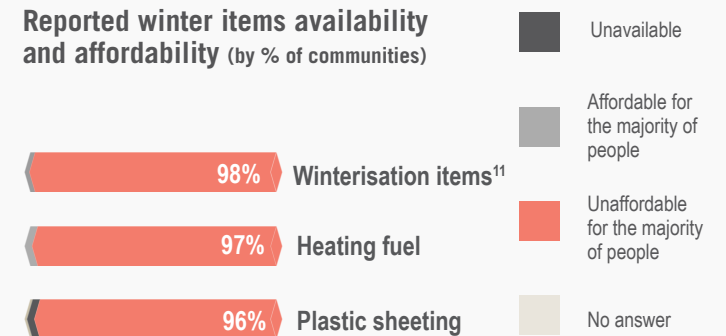


Winter-related findings

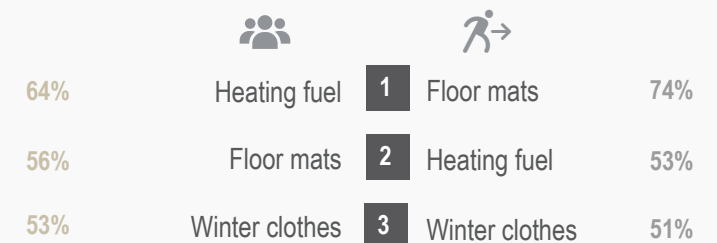
% of communities where winter-related shelter inadequacies for residents and IDPs were reported



Reported winter items availability and affordability (by % of communities)



Top three most commonly reported winterisation needs for residents and IDPs (by % of communities)





Access to Basic Services



Access to Electricity

5-6 hrs per day

was the most commonly reported range for hours of electricity accessible to households (reported by KIs in 31% of communities)

Main network

was the most commonly reported main source of electricity (reported by KIs in 83% of communities)

22%

% of communities where KIs reported the main network is partially or completely not functioning as a barrier for electricity access



Access to Water

61%

% of communities where KIs reported that not all households had access to sufficient water



7 days	21%
5-6 days	20%
3-4 days	16%
1-2 days	23%
0 days	20%

Days per week water from the network was available (by % of 716 communities connected to a water network)

Piped water network

was the most commonly reported source of drinking water (reported by KIs in 40% of communities)

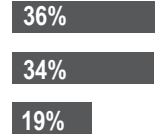


Access to Sanitation

86%

% of communities where KIs reported that no sewage system was present

Most commonly reported ways people disposed of solid waste (by % of communities)



36%	Waste burnt
34%	Free public waste collection
19%	Waste disposed of by household to a dumping location

36%

% of communities where KIs reported waste removal services as a WASH priority need ⁸



Access to Markets

37%

% of communities in which households reportedly were unable to access markets in the assessed location

Not enough consumers to support markets in the assessed location

was the most commonly reported reason for why markets were not functioning (reported by KIs in 78% of communities where households were unable to access markets in their own location)

81%

% of communities where KIs reported that the lack of transportation to markets was a barrier to physically accessing food markets

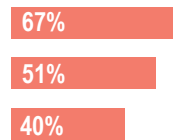


Access to Health Services

73%

% of communities where KIs reported that the households did not have access to health services in the assessed location

Most commonly reported health priority needs (by % of communities) ⁸



67%	Treatment for chronic diseases
51%	Medicines and other commodities
40%	First aid or emergency care

Going to the pharmacy instead of a clinic

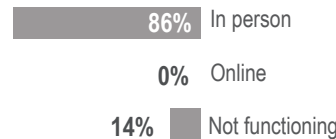
was the most commonly reported coping strategy for a lack of healthcare (reported by KIs in 90% of communities)



Access to Education Services

28%
64%

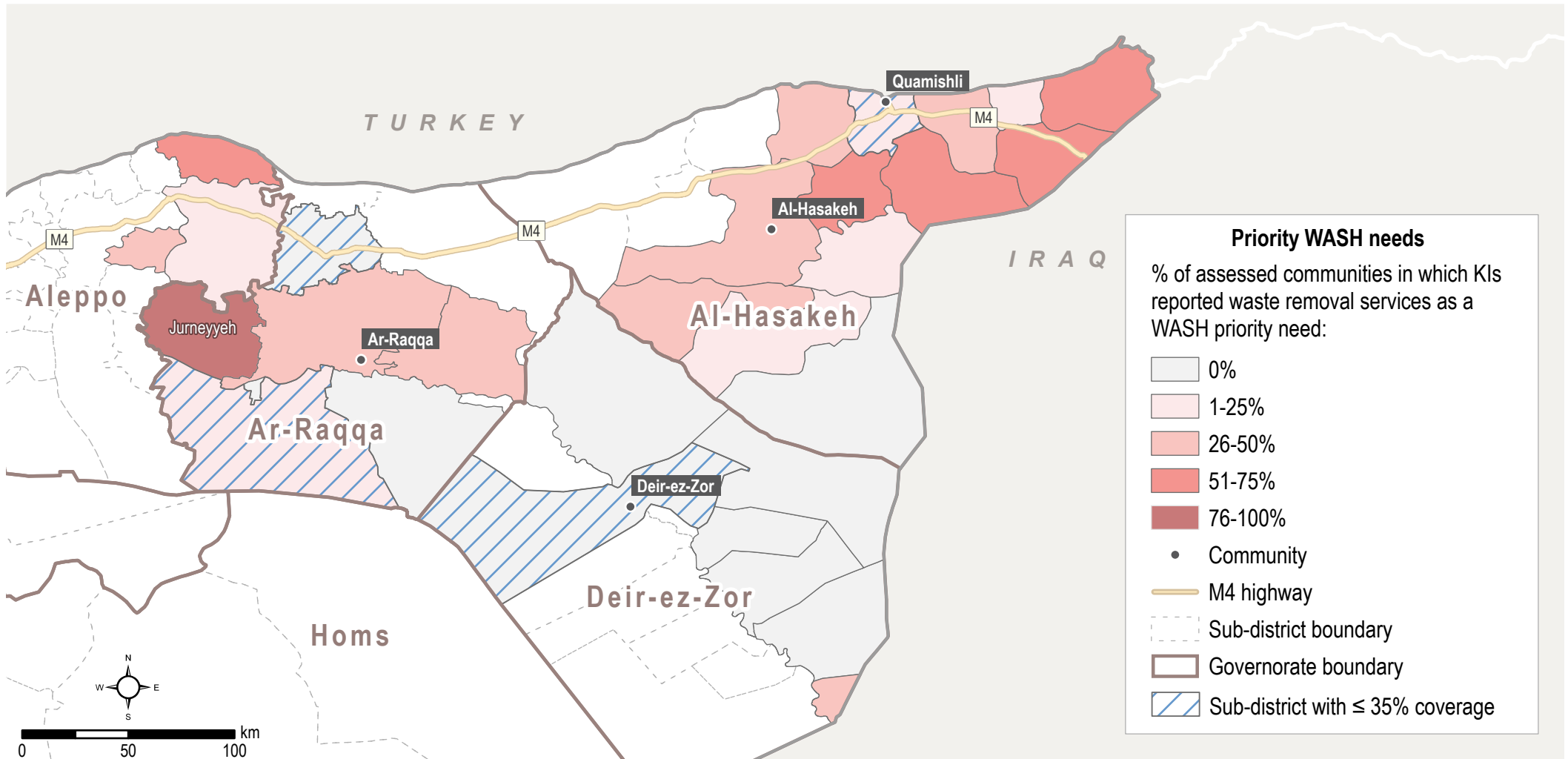
% of communities in which half or less of the school aged children accessed school in the last 30 days for residents and IDPs



% of communities where KIs reported on the functioning of education services in the assessed location ⁴

48%

% of communities where KIs reported that the lack of recognised certification of education level completed was a barrier to accessing education services ⁸



Waste Removal Services as a WASH Priority Need

Note on the map

This map shows the distribution of waste removal services as a WASH priority need by sub-district. Waste removal services were reported as a WASH priority need almost exclusively in Hasakeh, Raqqa and Aleppo governorates. The highest percentage was found in Jurneyyeh Sub-district.



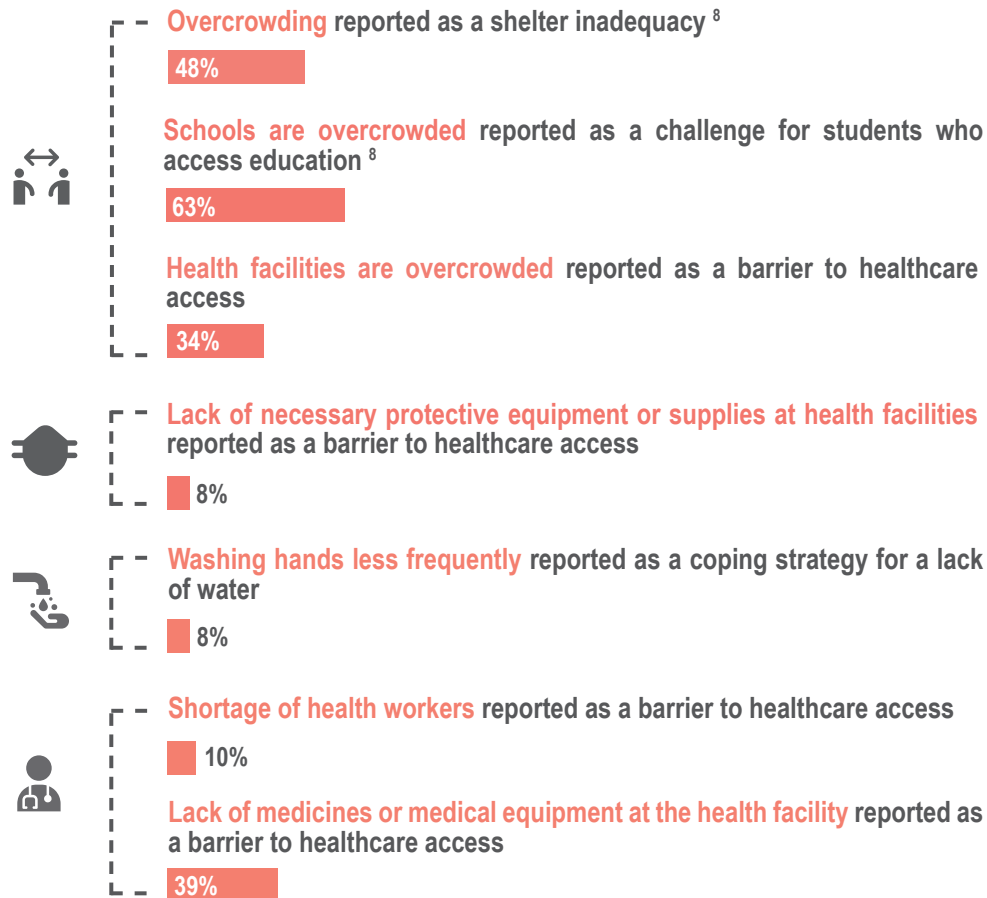
COVID-19

Effects of COVID-19 on livelihoods sectors in the community (by % of communities)

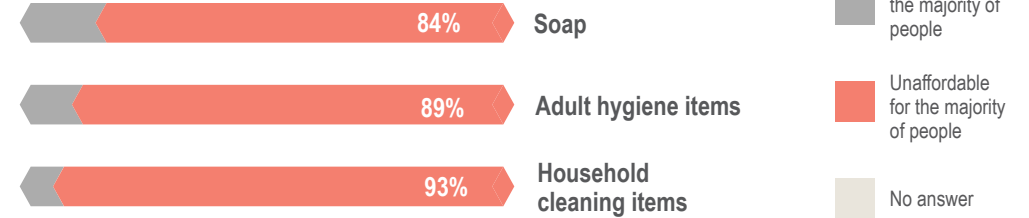


None of the available livelihood sectors were affected 46%
At least one of the available livelihood sectors was partially or totally affected 54%

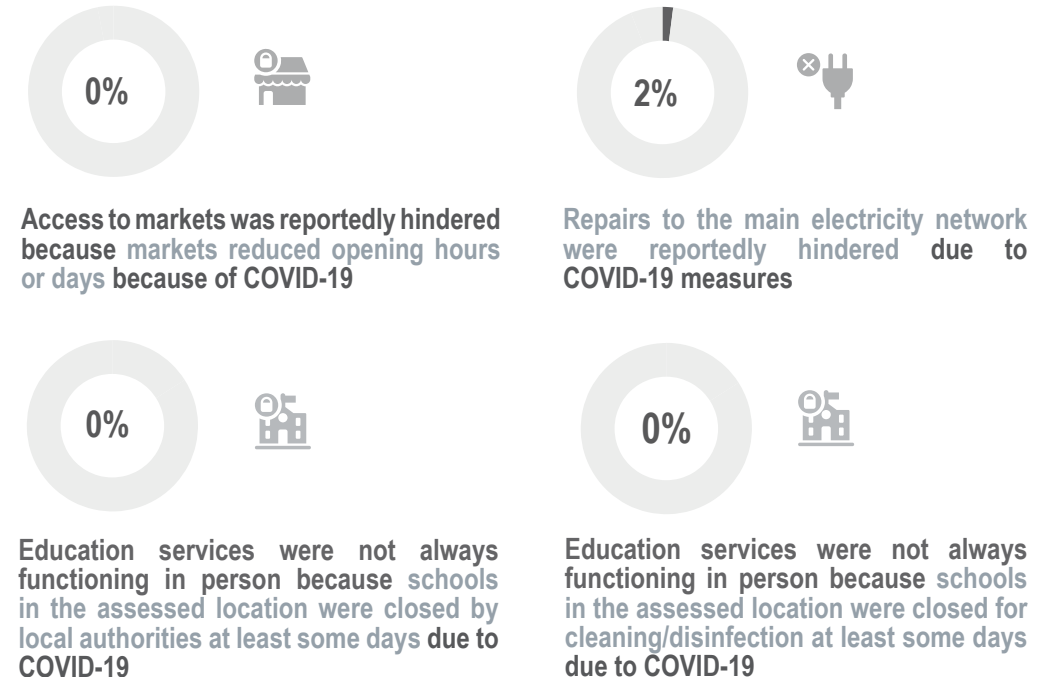
% of communities where COVID-19 risk indicators were reported

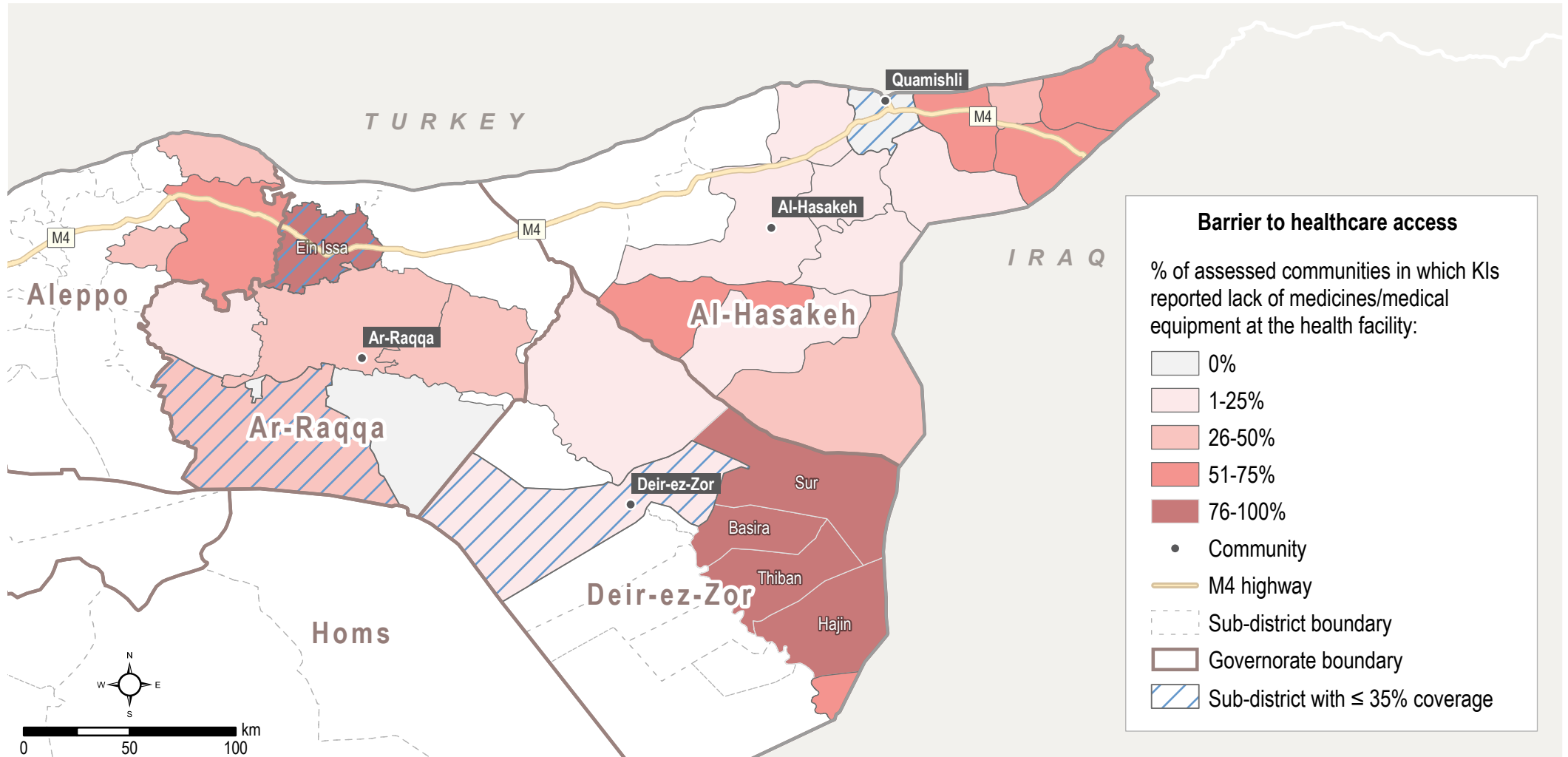


Reported hygiene item availability and affordability (by % of communities) ¹³



% of communities where COVID-19 related barriers to access to services were reported





Lack of Medicines or Medical Equipment at Health Facility

Note on the map

This map shows the percentage of communities reporting the lack of medicines or medical equipment at the health facility as a barrier to accessing healthcare in the last 30 days. In Basira, Ein Issa, Hajin, Sur, and Thiban Sub-districts, more than 75% of the assessed communities reported this barrier.



Security and Protection

Intersectoral findings on security

-  **General safety and security concerns restricting movement to markets** was reported as barrier to market access in **51** communities
- General safety and security concerns at markets** was a reported barrier to market access in **3** communities
- Movement restrictions** was reported as a protection risk in **3** communities⁸
-  **Tribal disputes** were reported as a protection risk in **15** communities⁸
- Threat from shelling** was reported as a protection risk in **2** communities⁸
- Fear from imminent conflict** was reported as a protection risk in **55** communities⁸
-  **The inability to lock homes securely** was reported as a shelter inadequacy in **30%** of communities⁸
- Lack of lighting around the shelter** was reported as a shelter inadequacy in **77%** of communities⁸
- The security situation** was reported as a barrier to shelter repairs in **3%** of communities
- Housing, land, and property issues** were reported as a protection risk in **1%** of communities⁸
-  **Safety and security concerns travelling to health facilities** was reported as a barrier to healthcare in **16** communities

Most commonly reported protection priority needs

(by % of communities)^{3,8}

- 71%** Special assistance for vulnerable groups
- 41%** Specialised child protection services
- 34%** Psychosocial support



% of communities where the lack of civil documentation for residents and IDPs was reported

- 14%** Lack or loss of civil documentation as a protection risk
- 17%** Lack of personal documentation required to enrol in school as a barrier to education access
- 2%**
- 5%**

% of communities where extreme coping strategies used by residents and IDPs to meet basic needs were reported⁴

Residents

- 24%** Early marriage
- 4%** Forced marriage
- 4%** High risk work
- 0%** Sending family members to beg
- 52%** Sending children (15 or below) to work

IDPs

- 23%**
- 4%**
- 3%**
- 0%**
- 61%**

Age, Gender, and Diversity

- KIs in **39%** of communities reported a **lack of employment opportunities for women** as a barrier to meeting basic needs⁸
- KIs in **24%** of communities reported a **lack of employment opportunities for persons with a disability** as a barrier to meeting basic needs⁸
- KIs in **14%** of communities reported a **lack of privacy for women and girls at health facilities** as a barrier to healthcare access
- KIs in **24%** of communities reported a **lack of market access for people with restricted mobility**

- Child labour** and **early marriage** were reported to prevent children from going to school in **61%** and **19%** of communities⁸
- Children below the age of 12** were reported as a group affected by child labour in **12%** of communities⁸
- Hazardous child labour** was reported as a protection risk in **26** communities⁸

Endnotes

1. Aleppo governorate includes Menbij and Ain Al Arab districts. The rest of Aleppo governorate is included under Northwest Syria.
2. KIs were asked to select a first, second, and third highest priority needs in their communities. The ranking shows the sectors most frequently chosen as either first, second or third highest priority. The overall priority need refers to the frequency a sector was selected across all three categories (first, second or third highest priority).
3. KIs could select three answers, thus findings might exceed 100%.
4. KIs could select multiple answers, thus findings might exceed 100%.
5. KIs were asked about the situation currently, instead of the last 30 days.
6. KIs had the option to select the price in United States Dollars (USD), Turkish Lira (TRY), or Syrian Pounds (SYP). When the price was not reported in SYP, the NES REACH Market Monitoring exchange rate was used to calculate the amount in SYP. According to the REACH Market Monitoring March 2021, 1 USD = 3,848 SYP; 1TRY= 510 SYP.
7. According to the NES REACH Market Monitoring March 2021, 1 USD = 3,848 SYP.
8. Findings for residents and IDPs were merged. The merge was calculated as follows: (option was selected for either residents or IDPs) / (communities reporting challenges/barriers/coping strategies for either residents or IDPs).
9. According to the NES REACH Market Monitoring March 2021, the Survival Minimum Expenditure Basket (SMEB) = 351,203 SYP.
10. Minor damage (cracks in walls, leaking roof, need of new doors and window repairs, etc.); Major damage (buildings with extensive damage to window frames and doors, but no structural damage to columns, slabs, or loadbearing walls); Severe damage (buildings with significant structural damage to column slabs, or loadbearing walls, cracking, steel elements and deformations visible in concrete; the building would require extensive repairs); Completely destroyed (buildings with structural damage so significant that rehabilitation is not possible).
11. Winterisation items include: winter clothes, winter shoes, and winter blanket.
12. KIs were asked about the situation in the last two months, instead of the last 30 days.
13. Adult hygiene items include: shampoo, toothbrush, and toothpaste. Household cleaning items include: washing powder, liquid, and dish detergent.

◆ By number of communities where KIs reported the relevant indicator for the relevant population group(s)

<i>Indicator</i>	<i>Subset</i>	<i>Indicator</i>	<i>Subset</i>
<i>N.o of communities reporting on:</i>		<i>N.o of communities reporting on:</i>	
Residents	1187	Barriers to assistance access (IDPs)	339
IDPs	514	Barriers to accessing sufficient food (merge)	1167
Challenges to assistance access (resident)	224	Days when water is available from network	716
Barriers to assistance access (resident)	935	Barriers to markets functioning	436
Challenges to assistance access (IDPs)	153		

- a. Humanitarian Needs Assessment Programme (HNAP). (March 2021). Spring 2021 report series: Socio-economic and Shelter Conditions.
- b. Reported by REACH field teams.
- c. United Nations office for the Coordination of Humanitarian affairs (OCHA). (29 March 2021). Briefing to the Security Council on the humanitarian situation in Syria. Retrieved from <https://reliefweb.int/>
- d. Eye of Euphrates. (22 March 2021). The high price of medicines increases the suffering of patients in Raqqa, and most of those affected are the owners of daily treatment. Retrieved from <https://eyeofeuphrates.com>
- e. Outbreak news today. (December 2019). Leishmaniasis outbreak in Deir ez-Zor, Syria. Retrieved from <http://outbreaknewstoday.com/>
- f. Eye of Euphrates. (2 March 2021). Leishmaniasis kills children in a camp for internally displaced people, east of Raqqa, with fears of losing control of it. Retrieved from <https://eyeofeuphrates.com/>

About REACH

REACH facilitates the development of information tools and products that enhance the capacity of aid actors to make evidence-based decisions in emergency, recovery and development contexts. The methodologies used by REACH include primary data collection and in-depth analysis, and all activities are conducted through inter-agency aid coordination mechanisms. REACH is a joint initiative of IMPACT Initiatives, ACTED and the United Nations Institute for Training and Research - Operational Satellite Applications Programme (UNITAR-UNOSAT). For more information please visit our website: www.reach-initiative.org. You can contact us directly at: geneva@reach-initiative.org.