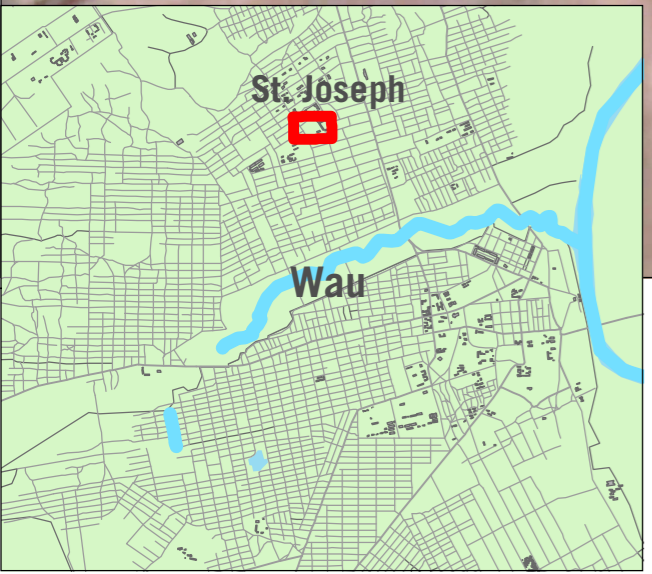
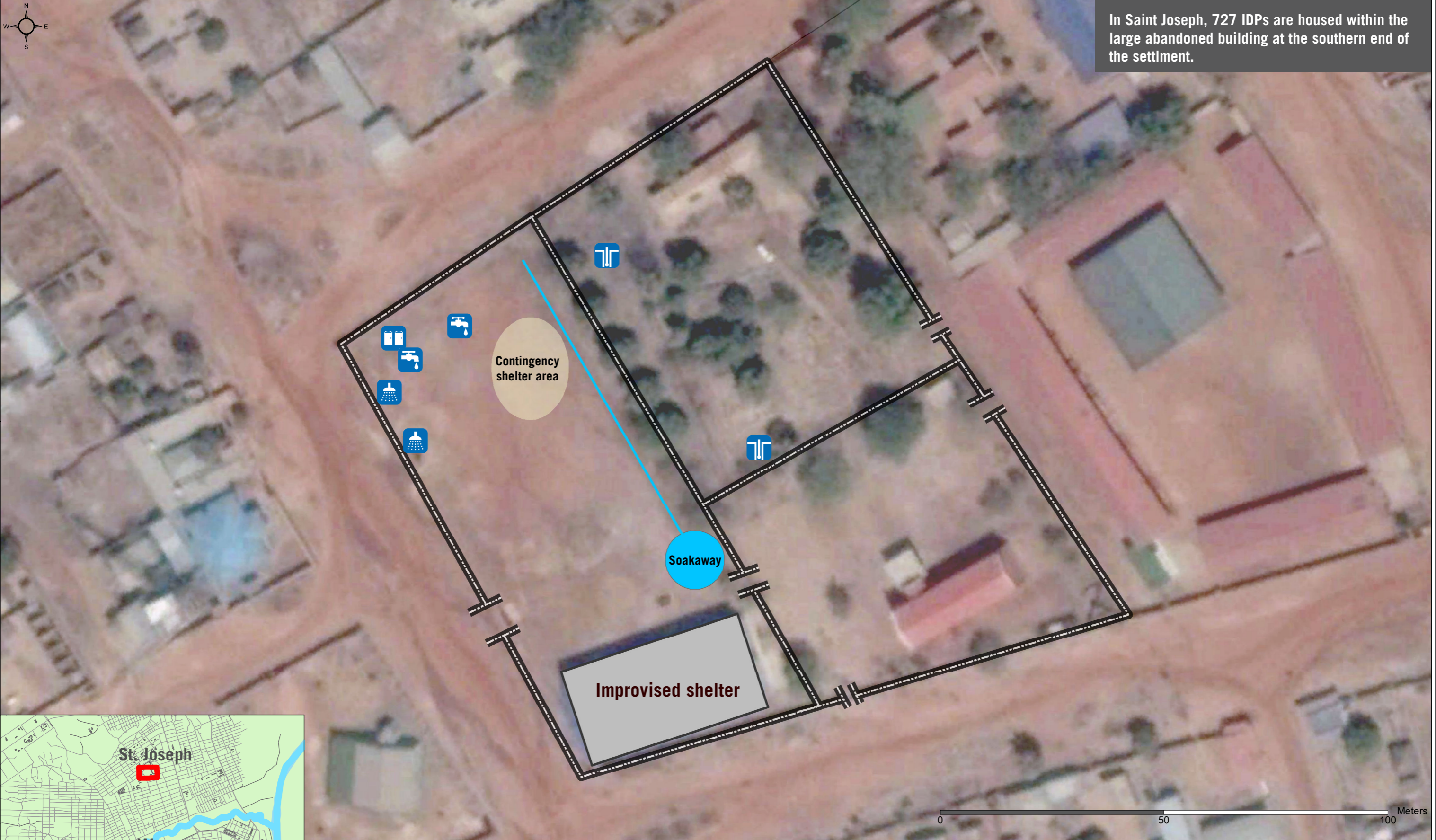










In Saint Joseph, 727 IDPs are housed within the large abandoned building at the southern end of the settlement.



-  Bathing block (5 shelters)
-  Borehole
-  Tapstand
-  Latrine block (10 stalls)
-  Drainage ditch
-  Walls

A product of: REACH  
Sources :  
Basemap: Google Satellite; Boundaries: ACTED; Facilities: ACTED  
Service Layer Credits:  
Coordinate System: WGS 1984 UTM Zone 36N  
File: REACH\_SSD\_Map\_Wau\_SaintJosephWASHInfra\_19Sep2016  
Contact: reach.mapping@impact-initiatives.org

*Note: Data, designations and boundaries contained on this map are not warranted to be error-free and do not imply acceptance by the REACH partners, associated, donors mentioned on this map.*