

SYRIA - Mahmoudli IDP Camp

Overview - As of February 2020

For Humanitarian Purposes Only
Production date: 02/03/2020

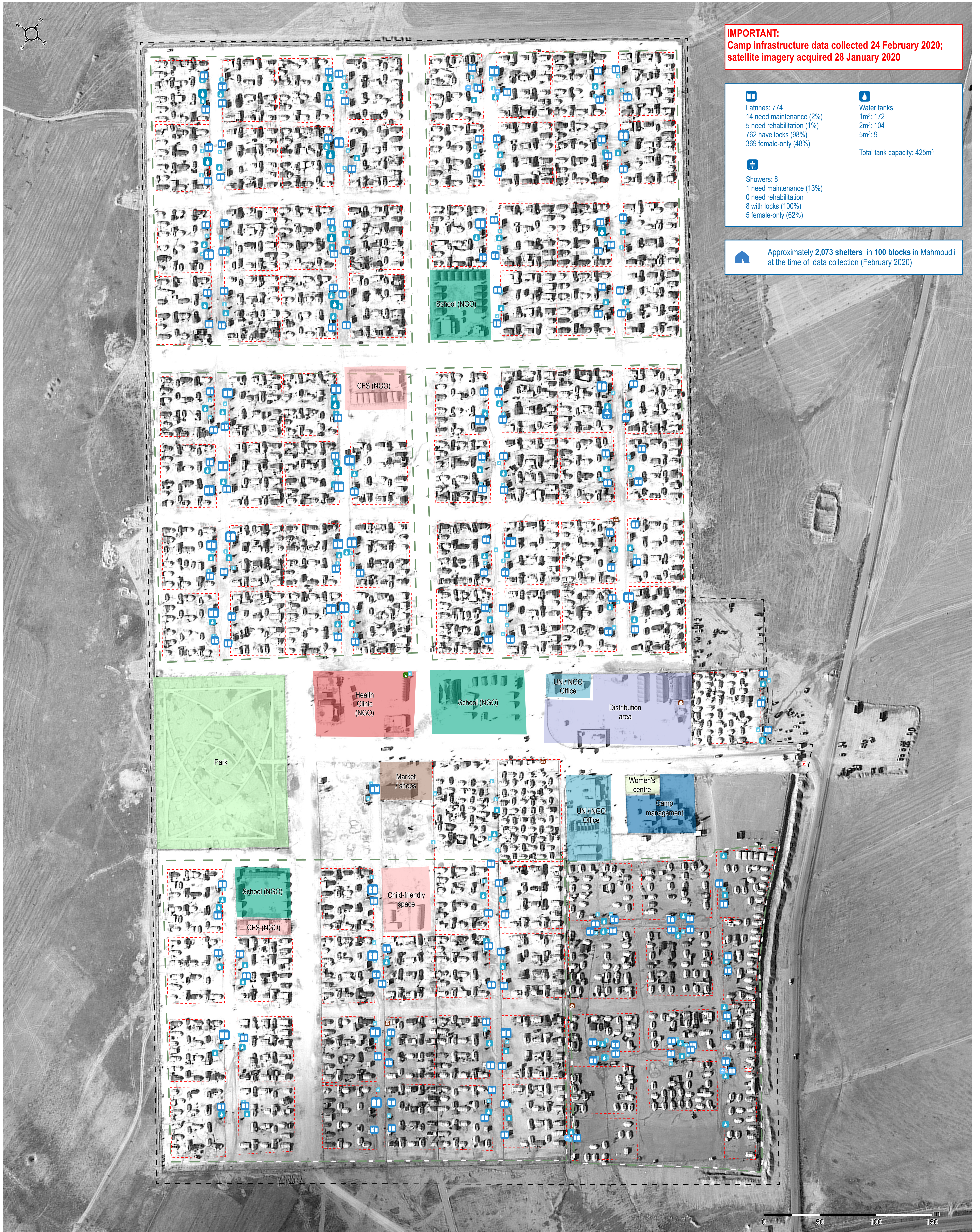
IMPORTANT:
Camp infrastructure data collected 24 February 2020;
satellite imagery acquired 28 January 2020

Latrines: 774
14 need maintenance (2%)
5 need rehabilitation (1%)
762 have locks (98%)
369 female-only (48%)

Water tanks:
1m³: 172
2m³: 104
5m³: 9
Total tank capacity: 425m³

Showers: 8
1 need maintenance (13%)
0 need rehabilitation
8 with locks (100%)
5 female-only (62%)

Approximately 2,073 shelters in 100 blocks in Mahmoudli at the time of data collection (February 2020)



- General infrastructure**
- - - Block
 - - - Sector
 - - - Camp boundary
 - ▶ Camp entrance
 - Mosque
 - Shop
 - Child-friendly space
 - Camp management
 - Distribution
 - Education facility
 - Health
 - Park
 - Market
 - UN / NGO office
 - Women's centre

- Sanitation infrastructure**
- | | | |
|---|---|---|
| ■ Shower | ■ Latrine | ■ Water tank capacity |
| ■ 1 shower | ■ 1 latrine | ■ 1 m ³ |
| ■ 2 showers | ■ 2-4 latrines | ■ 2 m ³ |
| ■ 3-4 showers | ■ 5-7 latrines | ■ 5 m ³ |
| ■ 5-6 showers | ■ 8-10 latrines | ■ Unknown |

Data Sources:
Infrastructure: REACH
Satellite imagery: WorldView-1 from 28 January 2020
Copyright: © 2020 DigitalGlobe
Source: US Department of State, Humanitarian Information Unit,
NextView license

Projection: WGS 1984 UTM Zone 37N
Contact: mena.reach@impactinitiatives.org

Note: Data, designations and boundaries contained on this map are not warranted to be error-free and do not imply acceptance by the REACH partners, associates, donors mentioned on this map.

File name: REACH_SYR_Map_Mahmoudli_Camp_Feb2020_A0