



# DAMAGE IMPACT ANALYSIS

## Understanding the Human Impact of Infrastructure Damage in Ukraine's Conflict-affected Settlements



**“You all say: there is no power supply, there is no Internet, there is no water. But the worst thing is when there is no information. A person should know whether they need to stock up water or buy candles. We need complex information so that people can see or hear it and understand what to do next.”**

*Community member - Nikopol*

The ongoing conflict in Ukraine has resulted in extensive damage to the built environment, including housing, public services, and critical infrastructure. This widespread destruction is impacting the availability and accessibility of essential services, influencing displacement dynamics, and affecting livelihoods throughout the country.

A refined understanding of the extent, severity, distribution, and socio-economic repercussions of infrastructure damage is crucial to develop effective and localised measures to mitigate and remediate these impacts. This understanding can inform both immediate humanitarian assistance and longer-term recovery and reconstruction efforts.

REACH contributes to these efforts by producing Damage Impact Analyses, which combine geo-spatial and qualitative data to provide insights into how communities experience and cope with infrastructural damage, highlighting the complex interconnections between affected sectors.

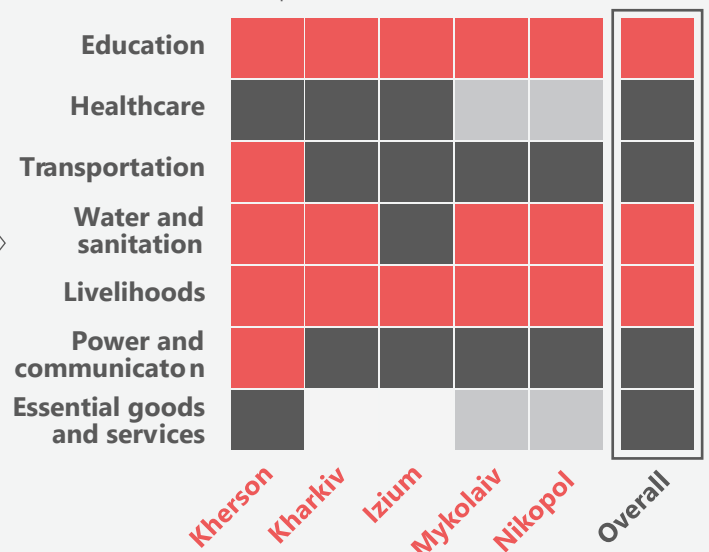
These analyses include indicative sectoral “impact scores” and participatory maps that reflect the perceptions of impacted populations regarding damage impacts. This approach offers a thorough view of the broader implications of infrastructure damage in Ukraine, supporting effective, informed decision-making for recovery and reconstruction initiatives.

### Impact Rating



### Damage Impact Heatmap for Five Major Cities

Data collected from September to December 2023



To request access to these reports, comment or collaborate with REACH, please contact us at: [impact.ukraine@impact-initiatives.org](mailto:impact.ukraine@impact-initiatives.org).



**USAID**  
FROM THE AMERICAN PEOPLE

# Key Findings

As of June 2024, REACH performed Damage Impact Analyses for five major conflict-affected urban settlements in Ukraine: Iziium, Kharkiv's Saltivka District, Kherson, Mykolaiv and Nikopol. Overall key findings include:



Across the five settlements, education and livelihoods were found to be highly impacted by damage. Similarly, access to water and hygiene was found to be highly impacted in all but one city.

In Mykolaiv and Kherson, the impact of damage on access to healthcare and essential goods was reportedly low.



There was extensive damage to the built environment.

Participants described how recovery is limited by the damage to housing, for example where skilled workers are less able to find accommodation. They described how damage to transport infrastructure exacerbates spatial inequalities in access to essential services.



At the time of data collection, there were some signs of recovery; although people faced considerable challenges, they described progress that had been made in restoring services.

Nevertheless, the ongoing threat of conflict-related damage led many participants to express frustration, with an expectation that recovery would be a significant challenge for the long-term.



**"If the power system is damaged, there is no water to high-rise buildings. [...] There are long queues for water"**

*- Community member, Kherson*



**"All health care facilities located in the community have been affected by shelling at least once. All facilities are damaged. [...] If we talk about the availability of services, they continue to be provided."**

*- Community member - Kherson*



**"A lot of small retail outlets burned out. There are not enough customers for them to open and work. Now there are probably not enough jobs."**

*- Community member, Kharkiv*

## Damage Assessment (geo-spatial analysis)

[Residential Damage in Settlements Impacted by Kakhovka Dam Flooding: Antonivka, Bilozerka, Ivanivka, Komyschany, Lvove, Olhivka and Sadove](#), August 2023

[Residential damage in Saltivka District, Kharkiv](#), September 2023

Residential damage in small conflict-affected settlements in Kharkivska Oblast: [Dovhenke](#), [Kamyanka](#), [Topolske](#) and [Yaremivka](#), November 2023

[Residential damage in Iziium](#), January 2024

Non-residential damage in Iziium, January 2024

[Residential damage in Kherson](#), April 2024

Non-residential and public service infrastructure damage in Kherson, April 2024

Assessment of damage to the built environment in Vovchansk, Kharkivska Oblast, June 2024

[Residential damage in Nikopol](#), June 2024

Non-residential damage in Nikopol, June 2024

**The majority of these reports are not publicly available due to the sensitivity of the information they contain. To request access to these reports, comment or collaborate with REACH, please contact us at: [impact.ukraine@impact-initiatives.org](mailto:impact.ukraine@impact-initiatives.org).**

## Damage Impact Analysis (qualitative reports)

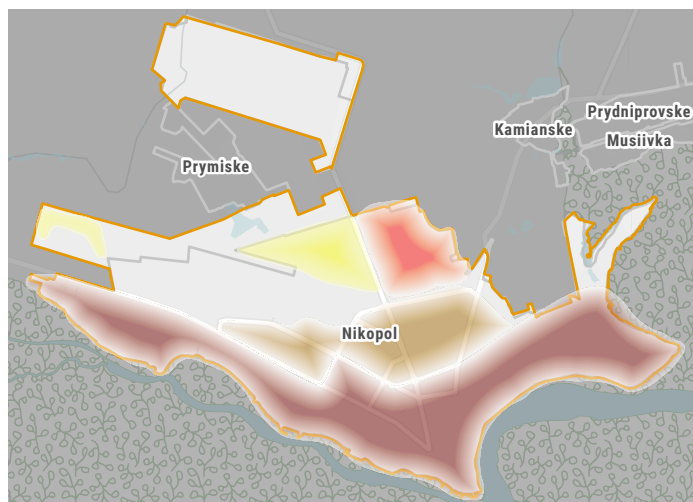
[Iziium](#), February 2024

[Saltivka District, Kharkiv city](#), February 2024

Nikopol, April 2024

Kherson city, May 2024

Mykolaiv city, April 2024



Community map of perceived damage in Nikopol, 2023.



**REACH** Informing more effective humanitarian action

REACH Initiative facilitates the development of information tools and products that enhance the capacity of aid actors to make evidence-based decisions in emergency, recovery and development contexts. The methodologies used by REACH include primary data collection and in-depth analysis, and all activities are conducted through inter-agency aid coordination mechanisms. REACH is a joint initiative of IMPACT Initiatives, ACTED and the United Nations Institute for Training and Research - Operational Satellite Applications Programme (UNITAR-UNOSAT).