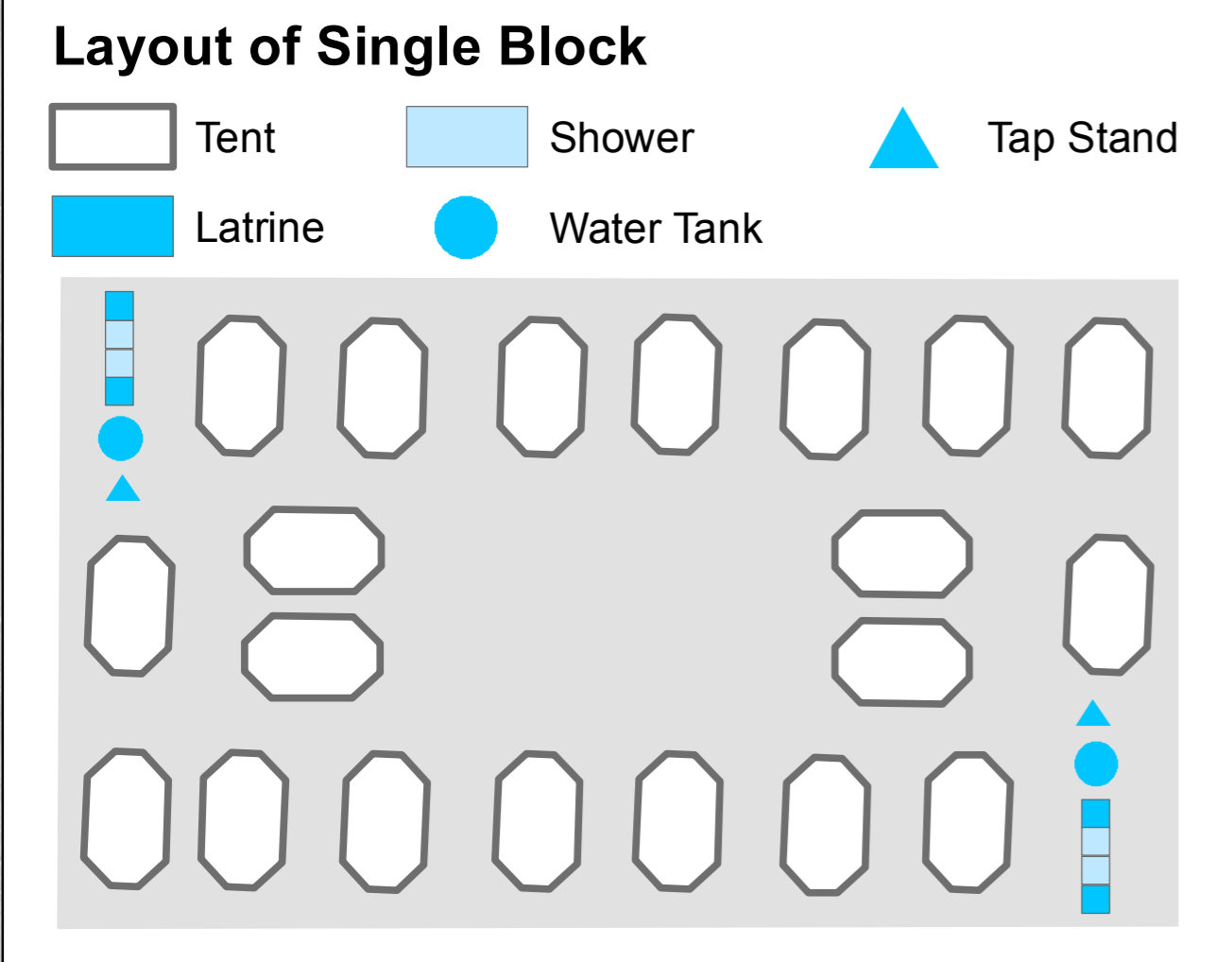
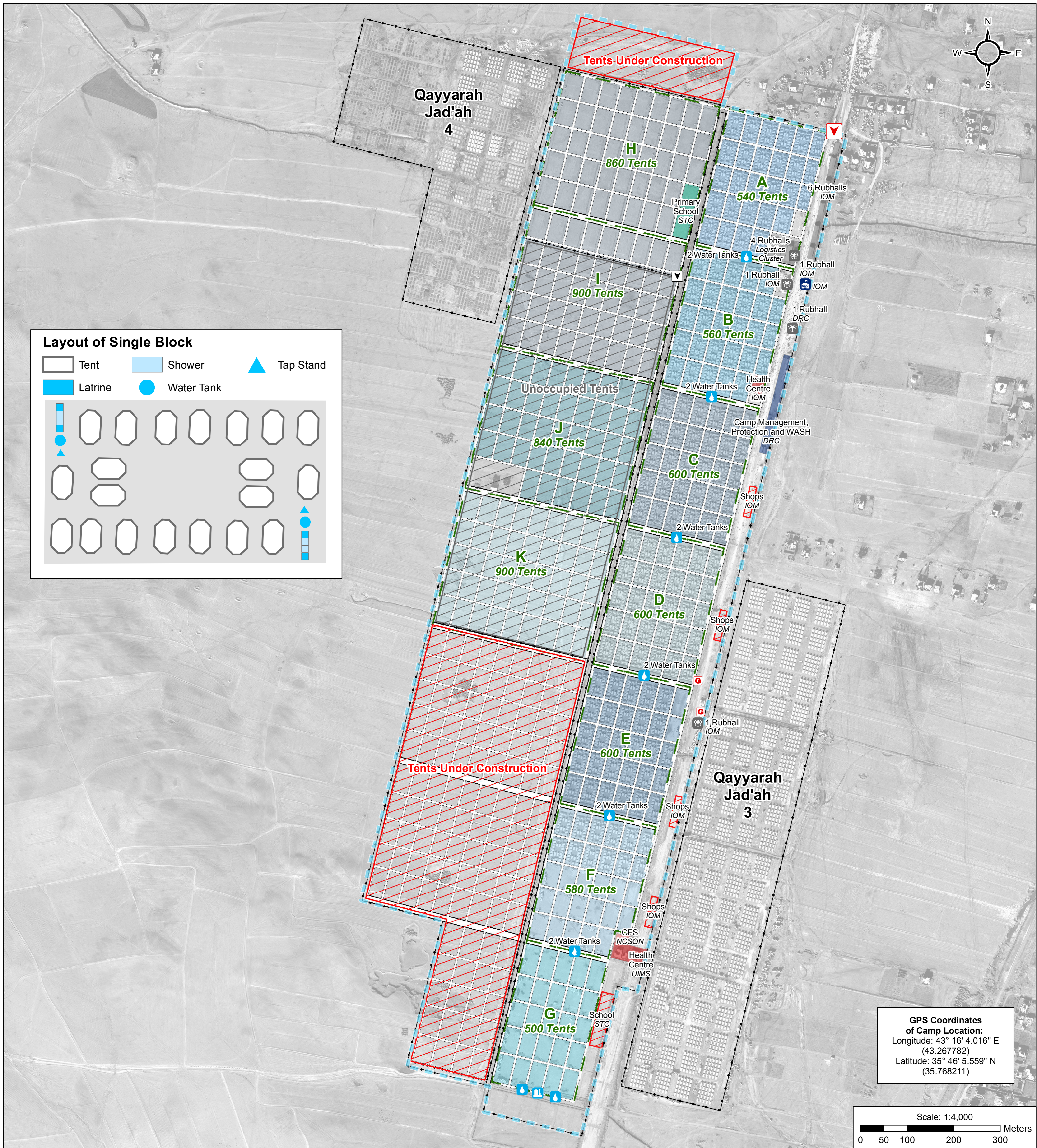


# IRAQ - Qayyarah Airstrip Camp

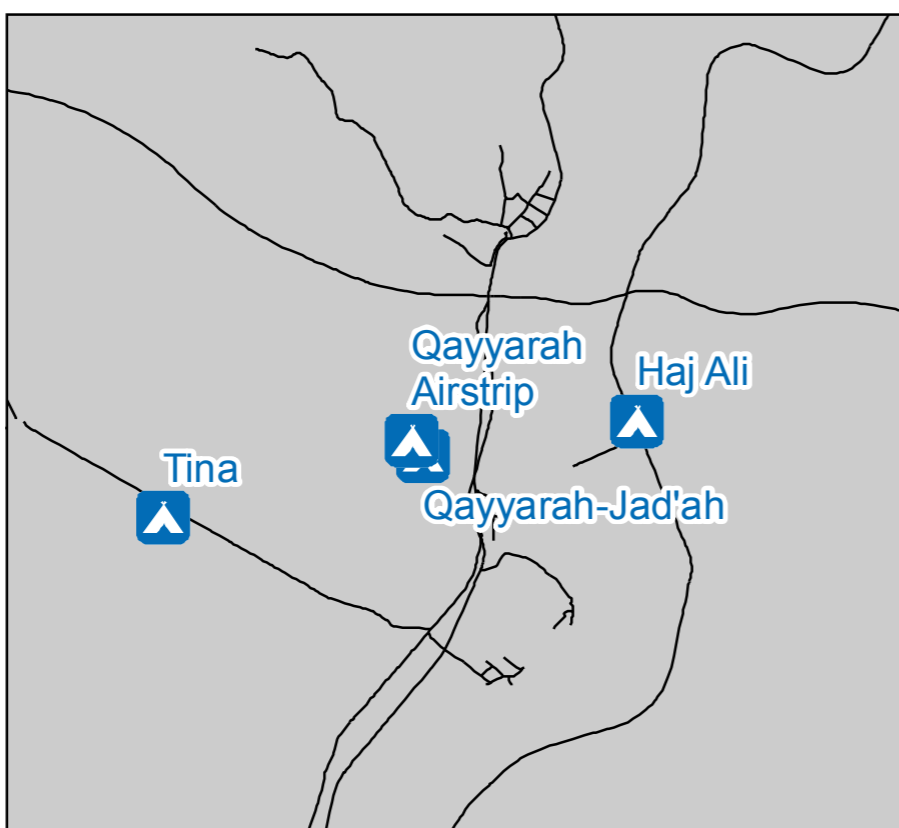
For Humanitarian Purposes Only  
Production date: 2 March 2017

## General Infrastructure - Updated 2 March 2017



**GPS Coordinates of Camp Location:**  
Longitude: 43° 16' 4.016" E (43.267782)  
Latitude: 35° 46' 5.559" N (35.768211)

Scale: 1:4,000  
0 50 100 200 300 Meters



- ### Camp Infrastructure
- Camp Delineation (Dashed line)
  - Fence (Dotted line)
  - Block (Blue outline)
  - Unoccupied Area (White outline)
  - Under Construction (Red hatched area)
  - Health (Red area)
  - Office (Blue area)
  - Child Friendly Space (Pink area)
  - Education (Green area)
  - Storage (Grey area)
  - Entrance (Red arrow)
  - Sector Entrance (Black arrow)
  - Office (Blue icon)
  - Water Tank (Blue icon)
  - Water Filter (Blue icon)
  - Generator (Red icon)
  - Storage (Grey icon)

**Data sources:**  
Camp Infrastructure: 2 March 2017, REACH Initiative  
Satellite Imagery: DigitalGlobe - WV1 - 30/12/2016  
Coordinate System: WGS 1984 UTM Zone 38N  
Projection: Transverse Mercator  
Contact: iraq@reach-initiative.org  
  
File: IRQ\_MAP\_IDP\_QayyarahAirstrip\_2Mar2017  
  
Note: Data, designations and boundaries contained on this map are not warranted to be error-free and do not imply acceptance by the REACH partners, associated, donors mentioned on this map.