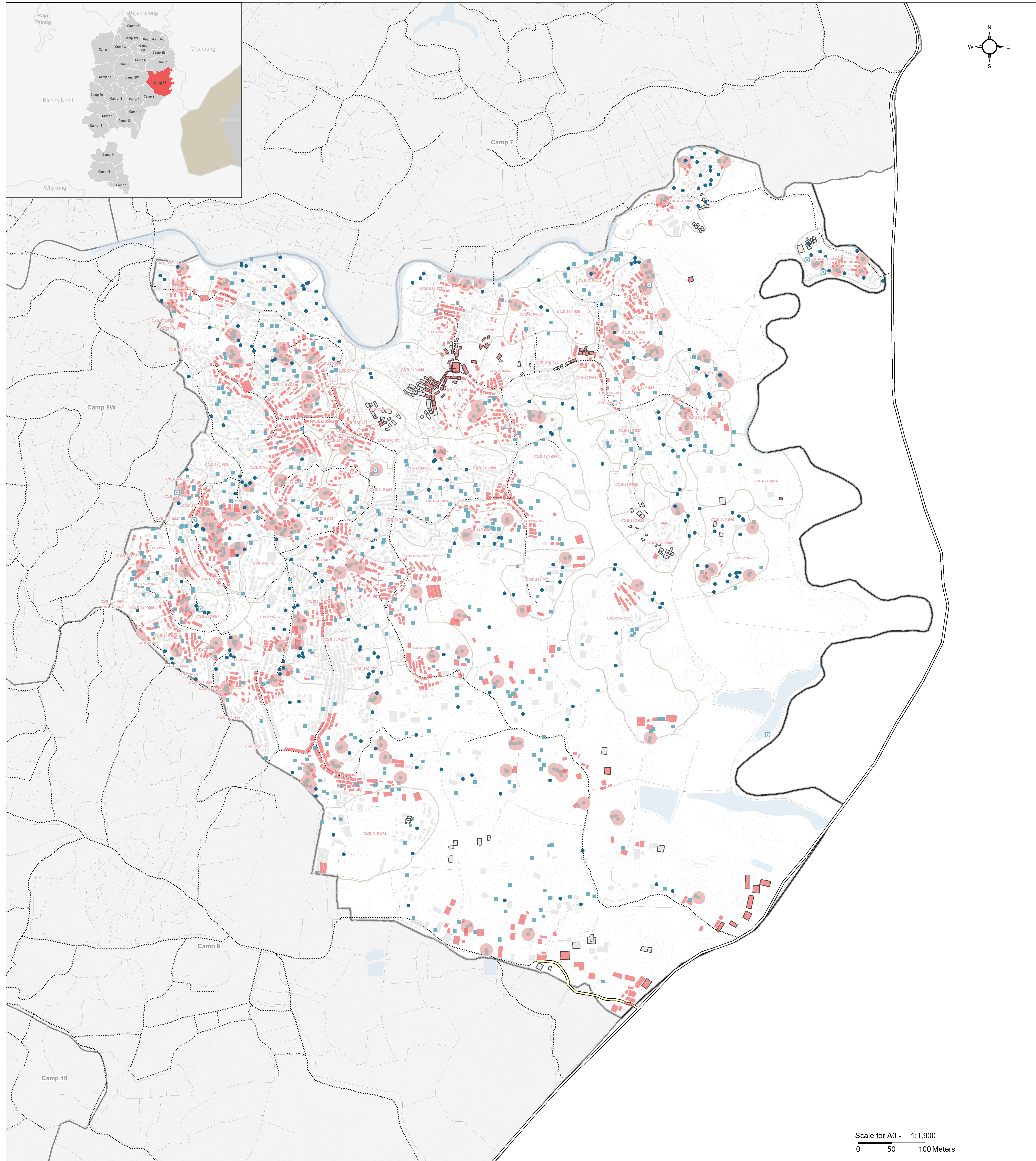


BANGLADESH - Rohingya Refugee Crisis - Cox's Bazar District

Camp 8E - Handpump and Tubewell Proximity to Latrines

For Humanitarian Purposes Only
Production date: 12 April 2018



Handpumps/Tubewells

- Functioning handpumps/tubewells >10m to latrine (271)
- Functioning handpumps/tubewells <=10m to latrine (152)
- River; Water Body
- Elevation Contours
- 10m buffer from handpump/tubewell <10m from latrine (98)

Shelters (Emergency Sphere distance to a latrine: 50m)

- Shelters outside the sphere standards (164)
- Shelter w/ nearest functioning handpump <10m from latrine (1,582)
- Shelters nearest functioning handpump >10m from latrine (2,339)

Sanitation

- Functioning latrines >10m from a functioning handpump/tubewell (442)
- Latrine <=10m from functioning handpump/tubewell (163)
- Open defecation point (designated area) (8)
- Decommissioned latrine (3)

Road network

- Highway
- Military Road / Vehicle Road
- Main Path
- Footpath
- Pathways

Boundaries

- Majhee Blocks (86)
- Neighboring camps
- Camp boundary

Data Sources:
Camp Infrastructure - REACH (13/02/2018)
Health facilities: Health Sector - Cox Bazar
Shelter Footprints - REACH / UNOSAT (13/02/2018)
Roads / Footpaths - ISCG / OSM / REACH
Camp / Majhee / Admin Boundaries - ISCG / IOM / OCHA

Coordinate System: WGS 1984 UTM Zone 46N
Projection: Transverse Mercator
Contact: reach.mapping@impact-initiatives.org

Note: Data, designations and boundaries contained on this map are not warranted to be error-free and do not imply acceptance by the REACH partners, associates, donors mentioned on this map.

HDX
Humanitarian Data Exchange

In support of the
WASH Sector
Cox's Bazar

Funded by
unicef

In partnership with
UNOSAT
UNOSAT Operational Support Programme

REACH An initiative of
IMPACT Initiatives
ACTED and UNOSAT