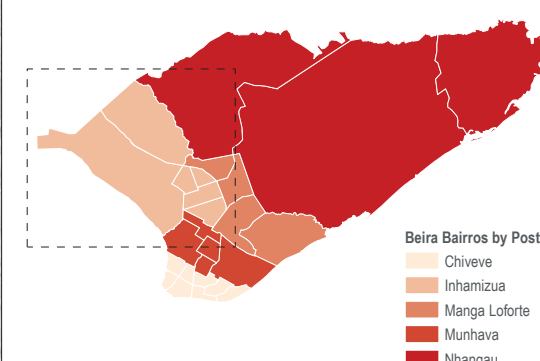
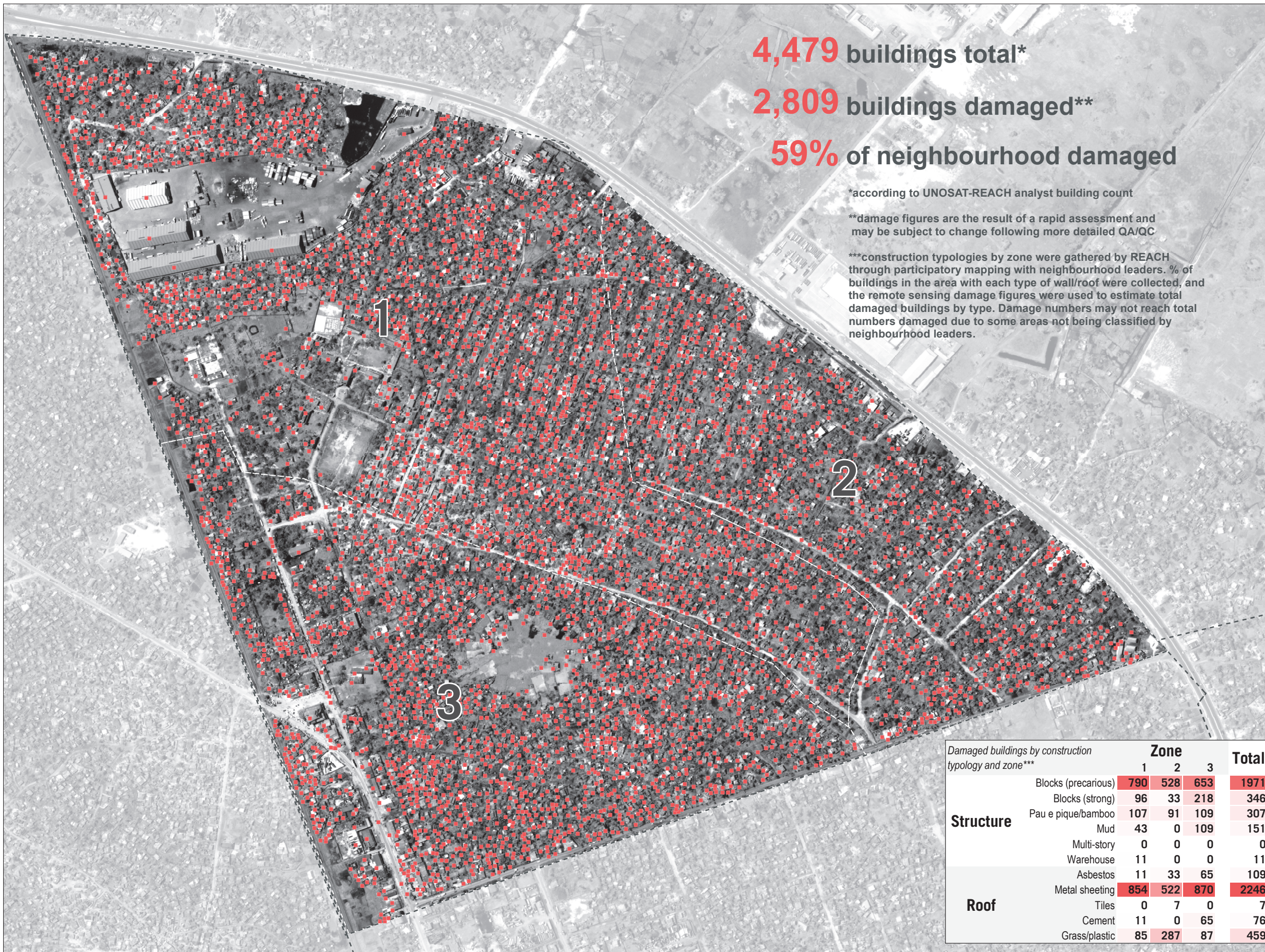


# MOZAMBIQUE - Beira City

## Chingussura - Structural Damage by Construction Typology - As of 26 March



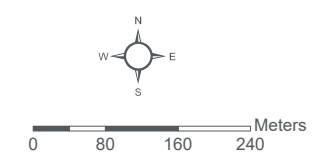
Structure	Zone			Total
	1	2	3	
Blocks (precarious)	790	528	653	1971
Blocks (strong)	96	33	218	346
Pau e pique/bamboo	107	91	109	307
Mud	43	0	109	151
Multi-story	0	0	0	0
Warehouse	11	0	0	11
Asbestos	11	33	65	109
Roof				
Metal sheeting	854	522	870	2246
Tiles	0	7	0	7
Cement	11	0	65	76
Grass/plastic	85	287	87	459



Data sources:  
Damage sites - UNOSAT-REACH  
Beira Bairros - INGC  
Bairros Delineation - REACH  
Administrative Boundaries (0-3) - OCHA  
Satellite Imagery: WorldView-2 from 26 March 2019  
Copyright: ©DigitalGlobe 2019  
Source: US Dept of State Humanitarian Information Unit, NextView License

**Legend**

- Damaged Buildings
- Bairros



Coordinate System: GCS WGS 1984  
File: MOZ\_Map\_CycloneIdai\_Beira\_DamageByType\_Chingussura\_30APR2019  
Contact: reach.mapping@impact-initiatives.org

Note: Data, designations and boundaries contained on this map are not warranted to be error-free and do not imply acceptance by the REACH partners, associated, donors mentioned on this map.

