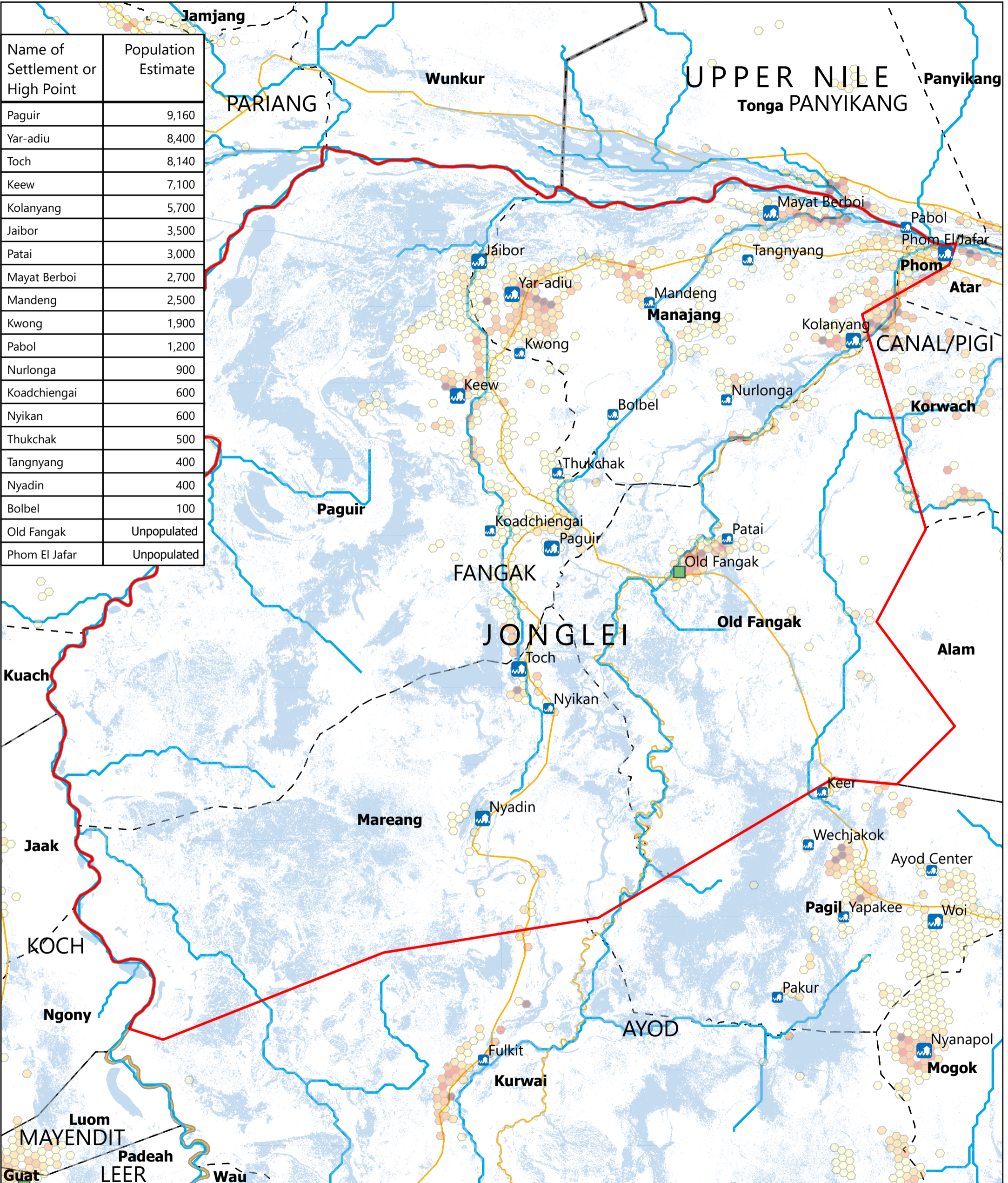


SOUTH SUDAN - Fangak County

Flood overview (September 2025)

For Humanitarian Purposes Only
Production Date: 29 September 2025



Name of Settlement or High Point	Population Estimate
Paguir	9,160
Yar-adiu	8,400
Toch	8,140
Keew	7,100
Kolanyang	5,700
Jaibor	3,500
Patai	3,000
Mayat Berboi	2,700
Mandeng	2,500
Kwong	1,900
Pabol	1,200
Nurlonga	900
Koadchiengai	600
Nyikan	600
Thukchak	500
Tangnyang	400
Nyadin	400
Bolbel	100
Old Fangak	Unpopulated
Phom El Jafar	Unpopulated

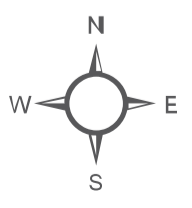


Population (Kontur, 2023)

- 1 - 100
- 101 - 250
- 251 - 500
- 501 - 750
- > 750

Satellite-detected flood extent (FEWSNET, as of 30th August 2025)

- Flooded settlements
- Flooded Small Towns
- High Ground (OCHA 2024 & UNMISS 2025)
- Roads
- River
- Payam
- Focus County
- County
- State



Data sources: Source: REACH, OCHA, UNMISS, IOM_DTM, UNOSAT, FEWSNET
Coordinate System: Name: GCS WGS 1984
File: REACH_SSD_Map_Jonglei_Fangak_Flood_29_Sept_2025
Contact: reach.mapping@impact-initiatives.org

Note: Data, designations and boundaries contained on this map are not warranted to be error-free and do not imply acceptance by REACH partners, associates or donors mentioned on this map.