

Rapid Response Mechanism (RRM): Central African Republic

#6

01 - 30 June 2023

Monthly factsheet

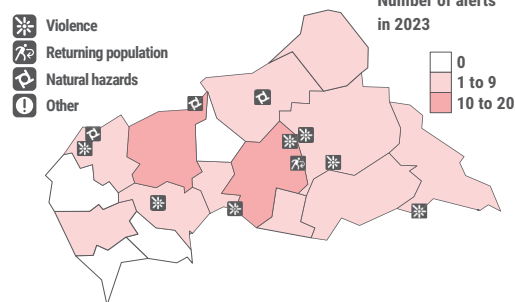


The Rapid Response Mechanism (RRM) is designed to monitor humanitarian situation in a context of sudden onset emergencies, conduct multisector assessments (MSAs) of needs and to provide various types of emergency assistance in order to save lives, including distribution of essential non-food items (NFIs) and high energy biscuits (HEBs), emergency water, sanitation and hygiene (WASH) interventions, as well as cash transfer programming (CTP). Currently, the RRM is made possible through the support of the United States Agency for International Development (USAID/BHA), the Directorate-General for European Civil Protection and Humanitarian Aid Operations (DG ECHO), the Swiss Agency for Development and Cooperation (SDC) and the Swedish International Development Cooperation Agency (SIDA). All RRM products are available on the [portal](#).

Alerts received or sent by the RRM in 2023

Alert distribution in June 2023 :

Location and types of alerts in June 2023



11 alerts
in June 2023

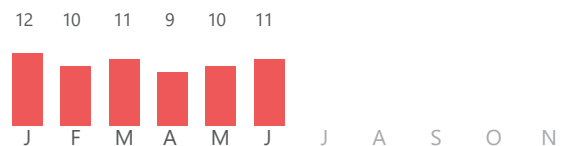
Median delay between:
alert and intervention¹ :
22 days

Types of alerts in 2023:



Legend :
Violence
Returning
Natural hazards
Others

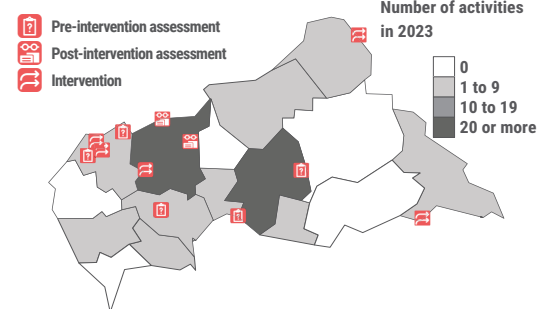
Number of alerts per month in 2023:



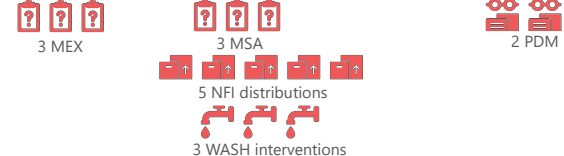
Overview of RRM activities in 2023¹

Activity distribution in June 2023 :

(MEX², MSAs, SMART³, NFI and HEB distributions, WASH interventions, CTP, PDM⁴)
Location and types of activities in June 2023



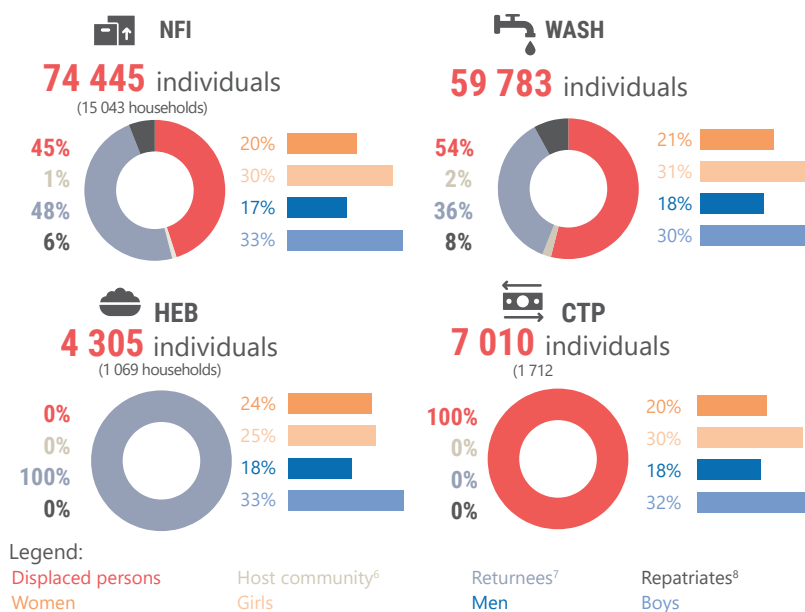
RRM activities in June 2023:



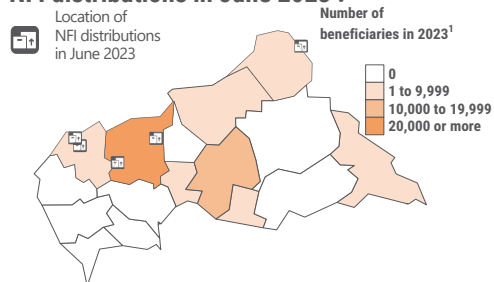
Activities in 2023 :

MEX	17	Cash distribution	3
MSAs	31	Sensitization sessions on hygiene	100
MSA-R ⁵	0	Emergency latrines	168
NFI distributions	30	Rehabilitations of water sources	69
WASH interventions	23	Distributed hygiene kits	8704
HEB distribution	1	PDM ⁴	16
Voucher distribution	0	Mixed distribution ³	2

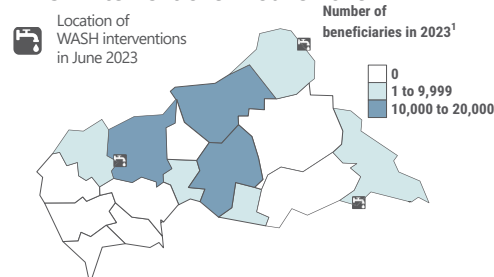
Beneficiaries in 2023¹



NFI distributions in June 2023 :



WASH interventions in June 2023 :



¹ Assessments and interventions, which were not finished by the end of June 2023, are not included. ² Exploratory missions. ³ In-kind and CTP. ⁴ Post-distribution monitoring. ⁵ MSA-R are not triggered following a RRM alert. MSA-R aim at gathering information on areas not recently affected and/or not recently accessed by humanitarian actors. ⁶ The term 'host community' refers to individuals that have not been displaced as the result of a humanitarian-related event. ⁷ The term 'returnees' refers to people who have come back to their pre-crisis location following a period of internal displacement. ⁸ The term 'repatriates' refers to former refugees who have returned from neighbouring countries.