



IDP Camp Profile - Garmawa

Ninawa, Iraq
August 2016

Management agency: BRHA
Manager/Focal point: Ibrahim Muhammad abdull-Qahar
Phone number: 7504920190
Email: n/a
Registration actor: BRHA

Summary

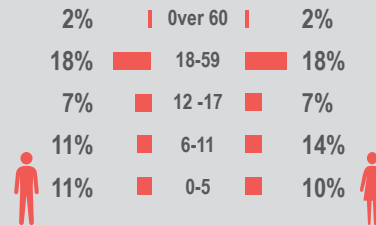
This profile provides an overview of conditions in Garmawa camp. Primary data was collected through household surveys on 16-08-16. Households were randomly sampled to a 95% confidence and 10% margin of error, based on population figures provided by CCCM. In some cases, additional information from camp managers has been used to support findings. Round V of data collection was in April 2016.

Camp Overview

of individuals: 5976
of households: 1215
Date opened: 13-06-14
Occupied number: 1304
Ongoing extension: Yes
Planned capacity: 1804
Camp area: 288,701

Demographics

49% male / 51% female

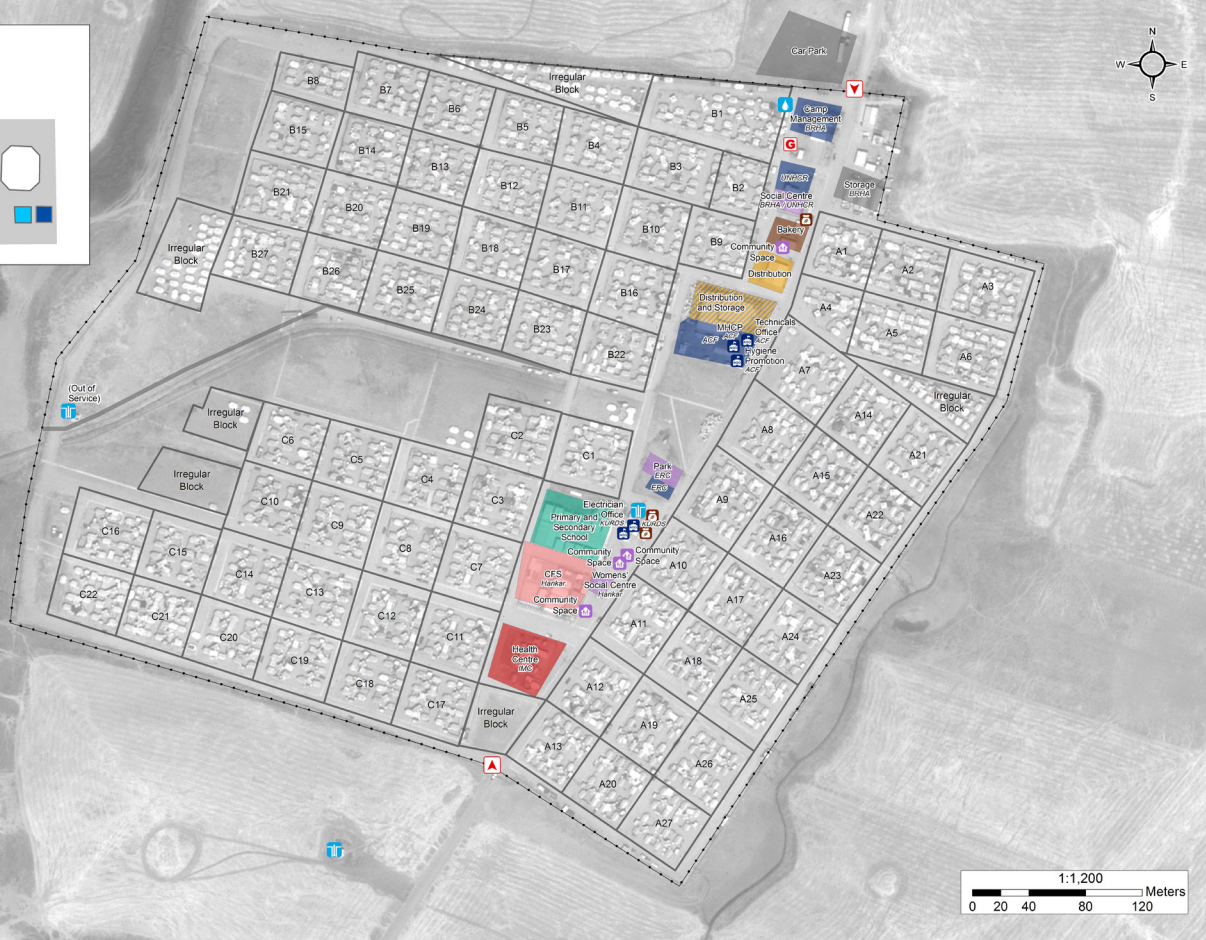
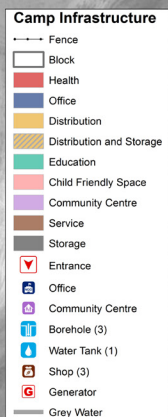
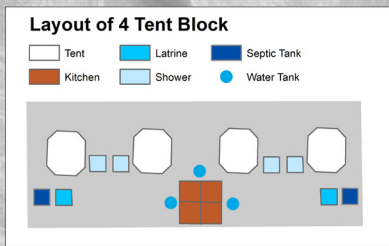


Location Map



IDP Camp Map - Garmawa

Lat. 36° 38' 51.682" N Long. 43° 14' 12.803" E



Sectoral Minimum Standards

		Target	Previous Round	Current Round	Achievement
Education	% of children aged 6-11 attending formal school	100%	81%	85%	●
	% of children aged 12-17 attending formal school	100%	36%	51%	●
Food	% of households accessed Family Food Parcel or equivalent in the past month	100%	100%	97%	●
Health	Health services are available on-site or within walking distance	Yes	Yes	Yes	●
CCCM	Average open area per household	min. 30m ²	237m ²	202m ²	●
Protection	% of IDPs registered on an individual basis (MODM/DDM)	100%	98%	100%	●
	% of households accessed shelter assistance since arrival at the camp	100%	100%	77%	●
Shelter	Average covered area per person	min. 3.5m ²	4.6m ²	4.6m ²	●
	Average number of individuals per shelter	max.5	4	5	●
WASH	# of persons per latrine	max. 20	8	9	●
	# of persons per shower	max. 20	4	5	●
	Frequency of solid waste disposal at least weekly	min. weekly	Yes	Yes	●

*GPS tracking of camp infrastructure was not possible this round due to restrictions from authorities. Area calculations subsequently could not be determined.

Targets based on minimum standards agreed with the CCCM Cluster, Iraq. Findings based on household-level data, enumerator field observations, and camp management documentation

● Minimum standard reached, ● More than 50% minimum standard reached, ● Less than 50% of minimum standard reached or not at all





IDP Camp Profile - Garmawa

Ninewa, Iraq
August 2016

Management agency: BRHA
Manager/Focal point: Ibrahim Muhammad abdull-Qahar
Phone number: 7504920190
Email: n/a
Registration actor: BRHA

Shelter

Top three observed shelter types*

Tent with brick walls	95%	<div></div>
Permanent structure	5%	<div></div>
n/a	n/a	

*Households were asked to select all shelter typologies within household.

Winterisation and NFI items

84%	reported a second fly sheet
92%	reported access to a heater
59%	reported at least one blanket per person
45%	reported at least one mattress per person
1.8	average number of carpets
58%	reported shelter provides warmth in winter

Hazards

14%	reported exposed electrical cables at site
-----	--

Shelter Improvement

34%	reported making own improvements to their shelter
-----	---

Community Organisation

IDP committees

92%	reported awareness of IDP committee(s)
-----	--

Complaints mechanism

92%	reported awareness of complaints mechanism
-----	--

Protection

Family Separation

0%	reported hosting unaccompanied or separated minors
9%	reported that other family members intended to join them

Vulnerable groups

Pregnant / lactating women	33%	<div></div>
Chronically ill individual(s)	5%	<div></div>
Disabled individual(s)	3%	<div></div>
Female headed households	9%	<div></div>

Intentions

3%	planned to move to a different location in next 3 months
----	--

Restrictions

16%	reported entry or exit restrictions during daylight hours
-----	---

Food Security and Coping Strategies

Reported access to food assistance

97%	accessed food assistance in past month
89%	received Public Distribution System (PDS) in past month

Top three food consumption coping strategies

Cheaper	67%	<div></div>
Borrowed	40%	<div></div>
Smaller meals	20%	<div></div>

Top three reported livelihood coping strategies

Debt	61%	<div></div>
Selling Assets	29%	<div></div>
Sold Assistance	25%	<div></div>

WASH

Latrines and showers

60%	reported public or communal latrines
53%	public/communal latrines lockable from the inside
60%	public/communal latrines with functioning lighting

Top three reported methods of waste removal

Collected	66%	<div></div>
Communal bin	34%	<div></div>
n/a	n/a	

Reported drinking water sources

0%	connection inside the home to collective water storage
98%	connection inside the home to private water storage
0%	communal water tap outside the shelter

Access to water

8%	reported 24 consecutive hours without access to water in the past month
----	---

Household Income

47%	reported as being economically inactive
-----	---

Top three income sources*:

No livelihood	47%	<div></div>
Humanitarian Aid	18%	<div></div>
Low skilled service	15%	<div></div>

*Households were asked to select all income sources within household.