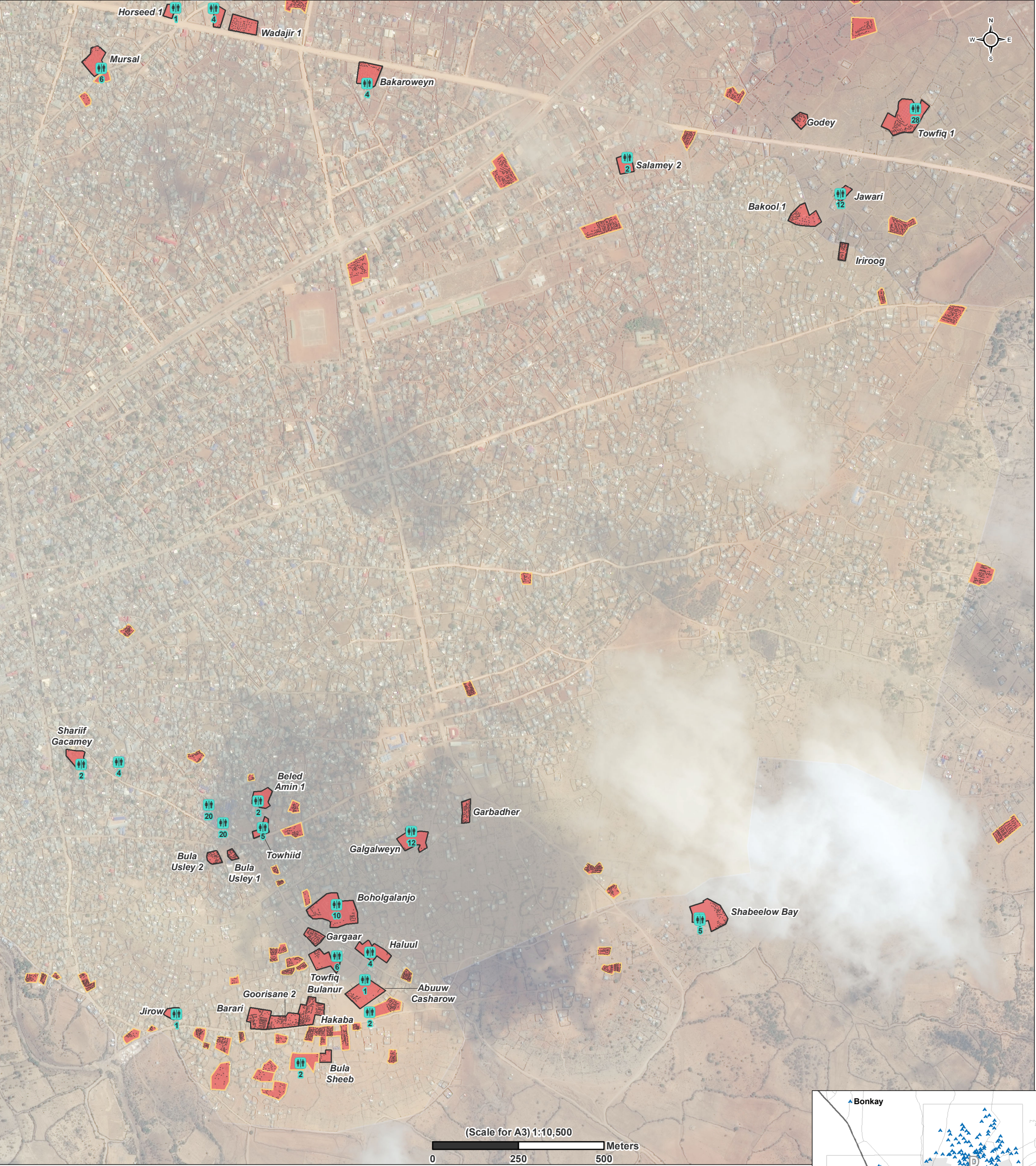


SOMALIA – Baidoa IDP Settlement Profiling

Baidoa B: Settlement access to latrines – April 2017

For Humanitarian Purposes Only
Production date: 19 June 2017



Structures

- Shelters >50m from latrine (4,698)
- Functioning latrines (149)

Access to functioning latrines

- <= 50 meters (Within sphere standards)
- > 50 meters

Boundaries

- Assessed IDP settlements
- Remotely identified IDP settlement (Not yet field validated)

Funded by
EUROPEAN COMMISSION
USAID
FROM THE AMERICAN PEOPLE

Data sources:
Settlements and Facilities: REACH field team
Imagery and Shelter points: UNOSAT 21APR2017
Administrative boundaries, Roads, Towns: UNDP
Coordinate System: WGS 1984 UTM Zone 38N
Contact: reach.mapping@impact-initiatives.org
File: reach_som_map_baidoa_b_idp_latrine_Access_2017_a3
Note: Data, designations and boundaries contained on this map are not warranted to be error-free and do not imply acceptance by the REACH partners, associates, donors mentioned on this map.

