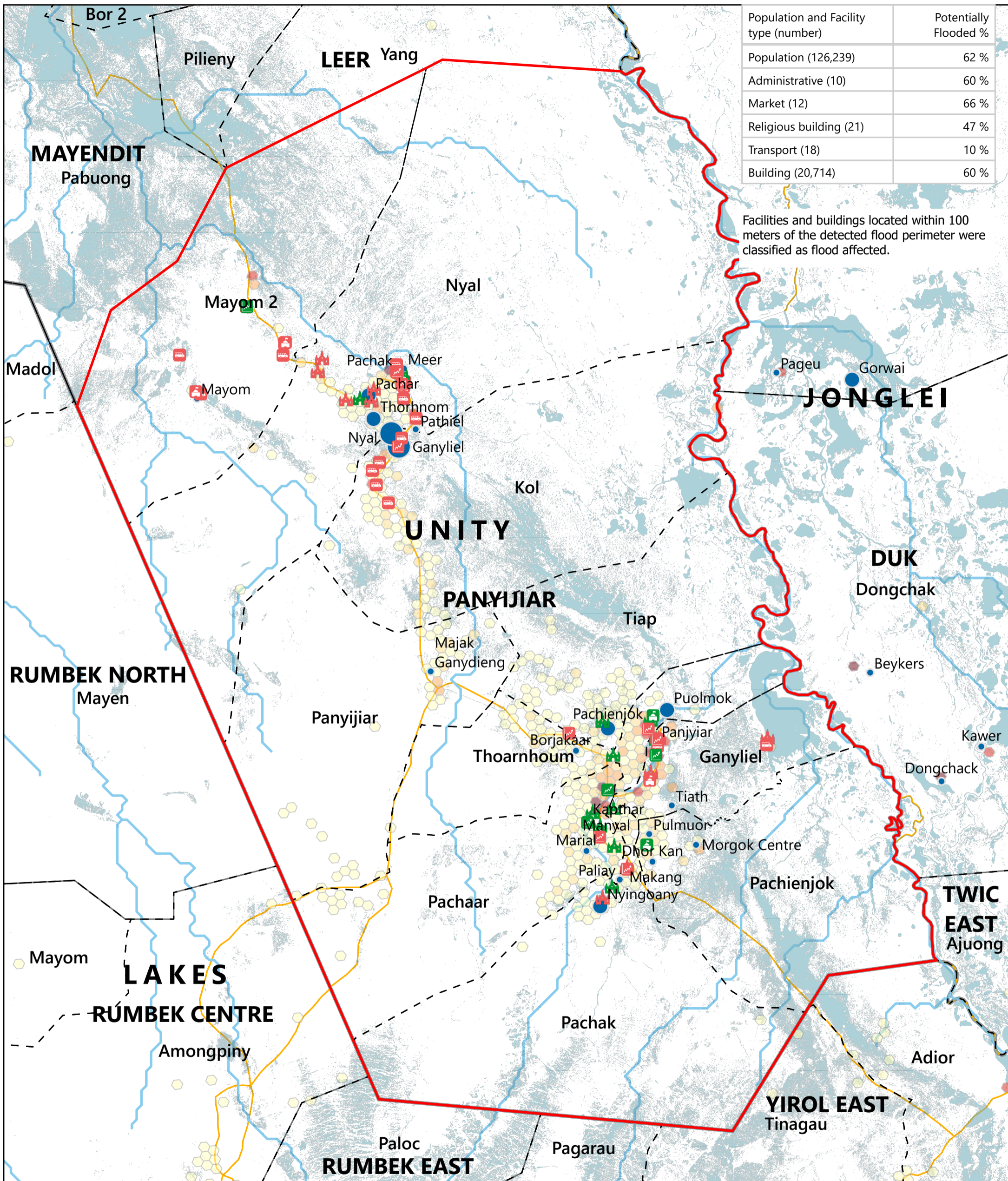


SOUTH SUDAN - Panyijar County

Flood Impact Map: Administrative & Other Facilities (October 2025)

For Humanitarian Purposes Only

Production Date: 22 October 2025



Population and Facility type (number)	Potentially Flooded %
Population (126,239)	62 %
Administrative (10)	60 %
Market (12)	66 %
Religious building (21)	47 %
Transport (18)	10 %
Building (20,714)	60 %

Facilities and buildings located within 100 meters of the detected flood perimeter were classified as flood affected.



Population (Kontur, 2023)

- 1 - 100
- 101 - 250
- 251 - 500
- 501 - 750
- > 750

Satellite-detected flood extent (FEWSNET, as of 30th September 2025)

- Unaffected Market
- Potentially Affected Market
- Unaffected Administrative Office
- Potentially Affected Administrative Office
- Unaffected Religious Centre
- Potentially Affected Religious Centre
- Unaffected Transport Facility
- Potentially Affected Transport Facility
- Unaffected Religious Centre
- Potentially Affected Religious Centre

Settlements (Population)

- < 5,000
- 5,001 - 10,000
- > 10,000

- Roads
- River
- Payam
- Focus County
- County
- State

Data sources: Source: REACH, OCHA, UNMISS, IOM_DTM, UNOSAT, FEWSNET, WHO, IOM, DTM, Global Google-Microsoft Open Buildings Dataset (2023)
 Coordinate System: Name: GCS WGS 1984
 File: REACH_SSD_Map_Unity_Panyijar_Flood_Impact_Administrative_22_Oct_2025
 Contact: reach.mapping@impact-initiatives.org

Note: Data, designations and boundaries contained on this map are not warranted to be error-free and do not imply acceptance by REACH partners, associates or donors mentioned on this map.

