

# NORTHWEST SYRIA MARKET MONITORING EXERCISE

Snapshot: 1-8th March 2021

## INTRODUCTION

To inform humanitarian cash programming, REACH, in partnership with the Cash Working Group (CWG), conducts monthly Market Monitoring Exercises in northern Syria to assess the availability and prices of 36 basic commodities that are typically sold in markets and consumed by average Syrian households, including food and non-food items, water, fuel, and cellphone data.

Of these, 18 items comprise the Survival Minimum Expenditure Basket (SMEB; see below), which represents the minimum, culturally adjusted items required to support a 6-person household for a month.

Data collection took place between 1-8th March 2021 and was conducted by Care Shafak, GOAL, People In Need, Syrian Association for Relief and Development (SARD), Solidarités International, Violet, NRC and REACH.

The accompanying data is disseminated monthly and is distributed through partners across the humanitarian community. See REACH Resource Centre for the [March 2021 data](#).

## SURVIVAL MINIMUM EXPENDITURE BASKET (SMEB) CONTENTS

	Item	Quantity	
Food Items	Bread	37 kg	
	Bulgur	15 kg	
	Chicken	6 kg	
	Eggs	6 kg	
	Fresh vegetables	12 kg	
	Ghee/vegetable oil	7 kg/L	
	Red lentils	15 kg	
	Rice	19 kg	
	Salt	1 kg	
	Sugar	5 kg	
	Tomato paste	6 kg	
	Hygiene items	Bathing soap	12 bars
		Laundry/dish soap	3 kg
		Sanitary pads	4 packs of 10
Toothpaste		200 g	
Fuel	Cooking fuel*	25 L	
Water	Water trucking	4500 L	
Telecom	Smartphone data	1 GB	
Other	Float (other costs)**	7.5% total value	

\* Kerosene in northern Syria

\*\* Float only applied to observations where prices of all SMEB contents could be collected

## KEY DEVELOPMENTS

### Coverage and data collection dates

In March 2021, REACH and partners covered 26 sub-districts and 2,343 individual shops in northwest Syria (NWS) for the Market Monitoring Exercise. In light of the fluctuation of the Syrian Pound (SYP)'s value and resulting market disruption, prices in the Market Monitoring dataset and output should be seen as representative only of the markets and dates where and when information was collected (1-8th March).

### Highest northwest SMEB SYP cost recorded; SMEB USD cost slightly decreased

In March, the value of the regional Survival Minimum Expenditure Basket (SMEB) reached 422,032 SYP, a 21% increase compared to February and an 85% long-term increase since September 2020, setting a new record for the highest ever recorded price in the Market Monitoring Exercise in NWS. The SMEB in

United States Dollar (USD) decreased slightly from 116 USD in February to 113 USD in March alongside a slight depreciation of the SYP against the USD (see next paragraph).

### Depreciation of the SYP against the USD

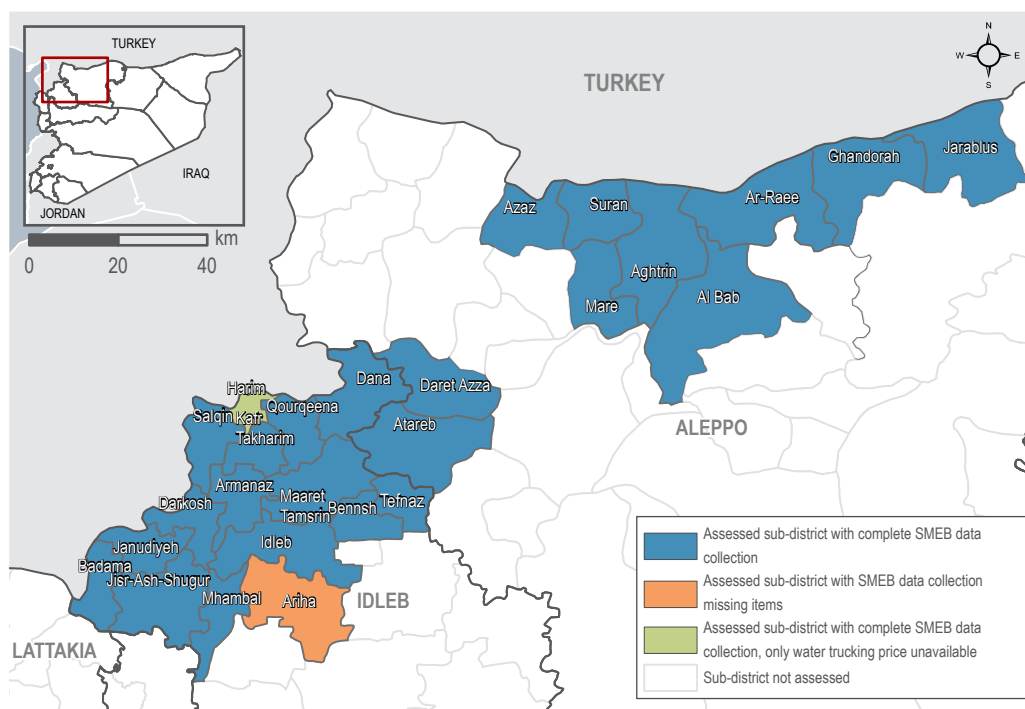
In March, the informal USD/SYP regional median exchange rate increased by 2% since February and reached a regional median of 3,726 USD/SYP. The six-month change, a 75% increase since September 2020, highlights that the value of the SYP remains an unstable currency against the USD. The highest exchange rate was recorded at 3,925 SYP to 1 USD in Ma'arrat Tamasrin community in Idleb governorate.

### Fuel prices further increased

At the regional level, overall prices for transport fuels increased by 30% between February and March, with a median price of 2,425 SYP per litre. Less expensive,

manually refined fuels, including petrol and kerosene showed rising prices and remained largely unavailable in NWS due to low levels of import, caused by the devaluation of the SYP and the Turkish lira (TRY) against the dollar. [Incidents](#) in and around refineries further reduced the availability of manually refined fuels, according to REACH field teams. For example, 75% of surveyed fuel vendors reported that manually refined petrol was not available in their market at the time of data collection. With the significant unavailability of lower quality but less expensive fuels, prices for high quality diesel and petrol (largely European fuels imported via Turkey) continued increasing in February, driven both by increasing demand as well as by fluctuating exchange rates of both the SYP and the TRY against the USD. The price of high quality diesel increased by 29%. High quality petrol increased by 31% in price.

## ASSESSED AREAS AND COVERAGE

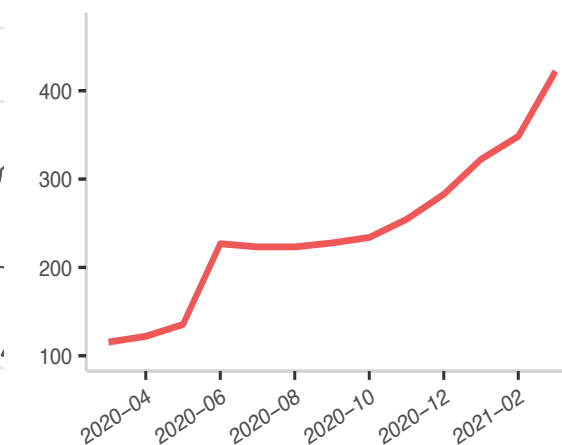


## MEDIAN SMEB COST IN SYP (USD), BY REGION

422,032 SYP (113 USD) NORTHWEST SYRIA - IDLEB, WESTERN & NORTHERN ALEPPO GOVERNORATES

## MEDIAN SMEB COSTS, BY MONTH

Thousand Syrian Pounds



# NORTHWEST SYRIA - KEY DEVELOPMENTS AND OVERVIEW

## KEY DEVELOPMENTS

422,032 SYP  
(113 USD) **NORTHWEST SYRIA - IDLEB, WESTERN & NORTHERN ALEPPO GOVERNORATES**

### Continued increase of food item prices

The cost of the regional SMEB food component reached 293,525 SYP in March, a 20% increase since February and a 84% increase since September 2020. The fresh food/vegetable component of the SMEB increased by 19% in price since February. The price of cucumbers increased by 10%, potatoes increased by 29%, green peas increased by 20%, onions by 15% and tomatoes by 23%, contributing to a 243% price increase for the fresh vegetable component since September 2020. According to REACH field teams, this trend is primarily a result of the high costs of transportation and import; such as increasing transport fuel prices and crossing fees imposed by authorities, as well as the further depreciation of the SYP.

Bulk food prices also increased by 22% overall since February, again due to the higher cost of imported items, rising fuel costs, and unstable exchange rates against the USD. REACH field teams also reported that this trend may be due to the insufficient supply of bulk/dried food distributions by organizations, in addition to the reliance on imported products from Turkey due to low domestic production capabilities. The price of bread (bag of 8 pieces) also increased by 25% since February, reaching a regional median of 1,000 SYP. Increasing bread prices are primarily due to a similar rise in the price of flour (25% increase since February), a product which is in short local supply in the region and for which import

prices are dependent on fluctuating exchange rates. Additionally, high prices were also recorded for other SMEB food items such as chicken, the price of which increased by 23% since February and has increased by 102% since September 2020, due to a combination of factors including SYP depreciation, the high costs of transportation and poultry feed. For similar reasons, the price of eggs increased by 6% since February and 52% since September 2020.

### Rising cost of cooking oils and cooking fuels

In addition to the rising cost of food items themselves, additional items that are necessary for the preparation and cooking of raw food also increased in price. Median regional prices for vegetable oil and ghee, both commonly used for cooking, rose by 35% and 30% respectively between February and March, continuing a significant upward trend. Both commodities are largely imported into NWS and, therefore, subject to exchange rate fluctuations and border crossing fees. The cost of fuels used for cooking increased over this one-month period by 32%, whereas the median price of manually refined kerosene increased by 25% and liquid petroleum gas (LPG) increased by 23%. As reported above, manually refined kerosene is often unavailable in many markets of NWS (reported as unavailable by 53% of surveyed fuel vendors in March), leading consumers in NWS to rely more heavily on the use of LPG for cooking purposes.

## MEDIAN SMEB COSTS & CHANGES\*

Syrian Pounds

Sub-district	SMEB	One month change*	Six month change*
Northwest Syria	422,032	21%	85%
Aghtrin	389,741	25%	93%
Al Bab	398,417	32%	91%
Ariha*	NA	NA	NA
Armanaz	467,769	19%	101%
Ar-Ra'ee	389,923	20%	91%
Atareb	470,055	20%	79%
A'zaz	414,840	35%	85%
Badama	408,701	27%	70%
Bennsh	423,362	22%	88%
Dana	439,015	20%	83%
Daret Azza	424,606	19%	101%
Darkosh	443,943	19%	93%
Ghandorah	364,172	21%	66%

Sub-district	SMEB	One month change*	Six month change*
Harim**	393,289	12%	77%
Idleb	463,275	25%	102%
Janudiyeh	414,671	19%	NA
Jarablus	400,121	23%	85%
Jisr-Ash-Shugur	424,958	17%	80%
Kafr Takharim	445,493	26%	83%
Maaret Tamsrin	420,701	20%	77%
Mare'	410,290	25%	79%
Mhambal	419,018	18%	93%
Qourqeena	442,056	23%	94%
Salqin	448,866	21%	100%
Suran	410,844	22%	102%
Teftnaz	428,921	27%	61%

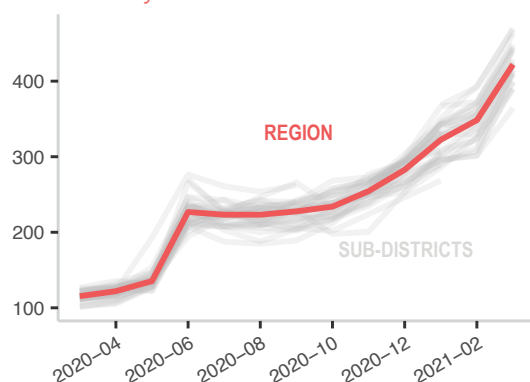
\* For price and change calculations, only the communities within a sub-district with consistent coverage across months are included.

\*\* SMEB calculated without water trucking component.

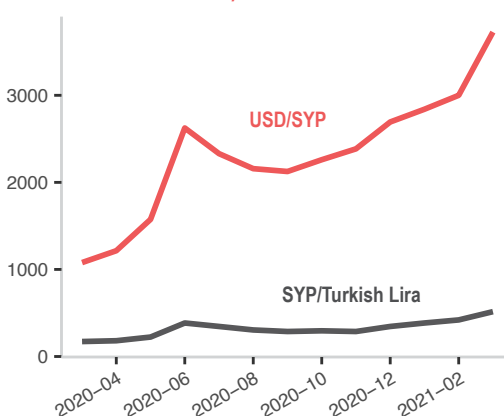
Note: Lack of data for a SMEB item does not necessarily imply a shortage.

## MEDIAN SMEB COSTS, BY MONTH

Thousand Syrian Pounds



## EXCHANGE RATES, BY MONTH & CURRENCY



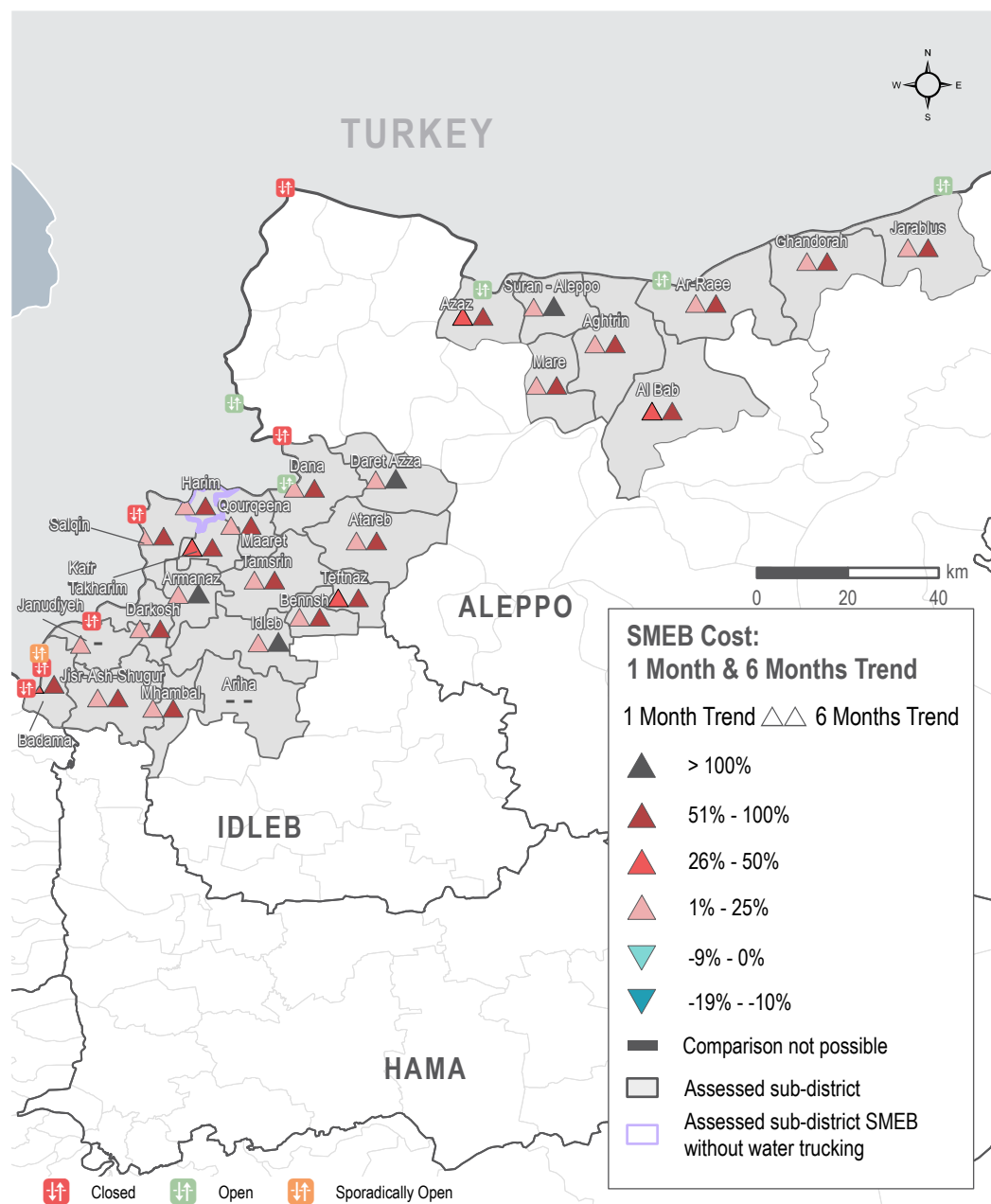
## SUB-DISTRICTS WITH INCOMPLETE SMEB IN JANUARY

**Ariha** Bread and kerosene

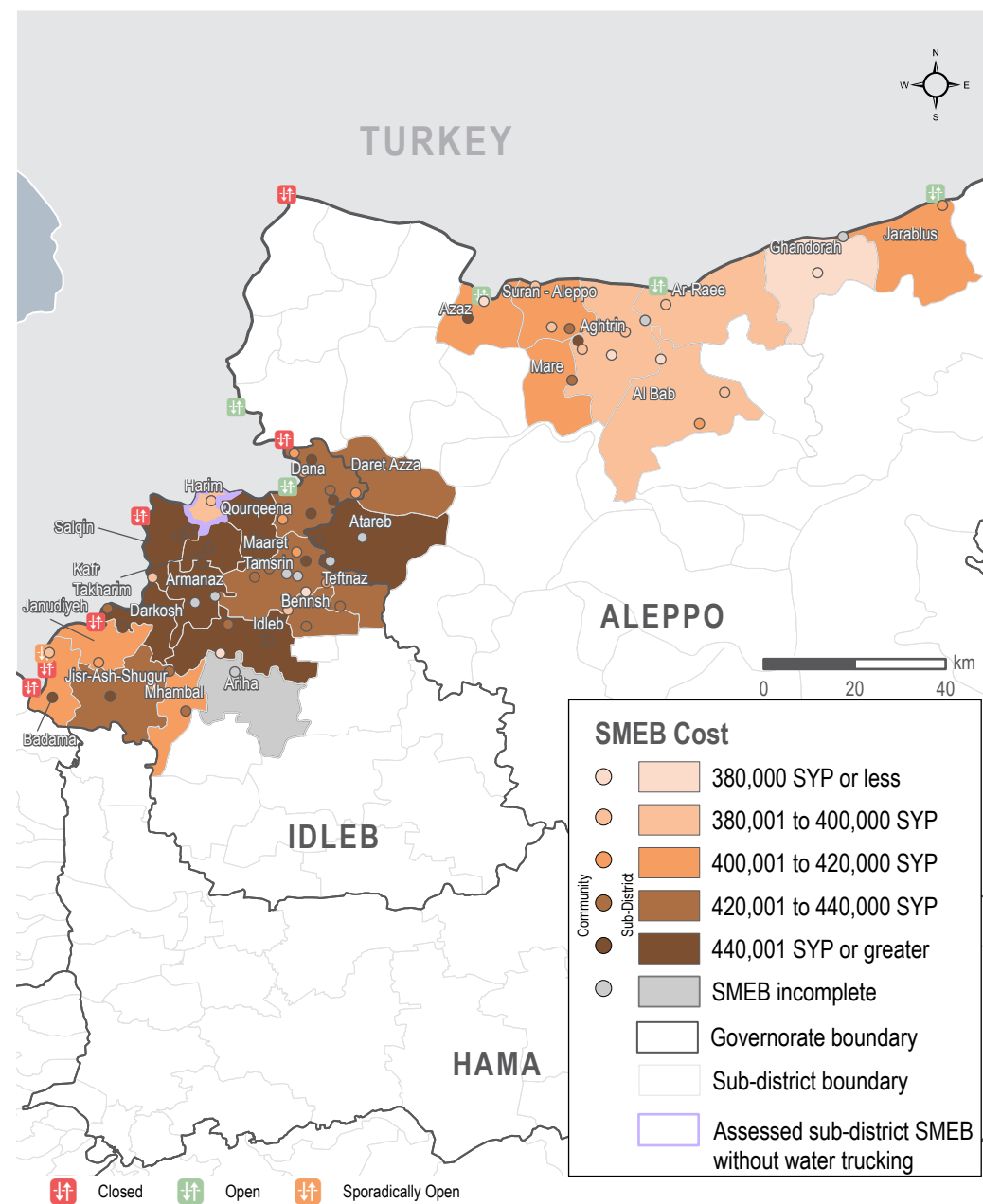
Note: Lack of data for a SMEB item does not necessarily imply a shortage.

# NORTHWEST SYRIA - KEY DEVELOPMENTS AND OVERVIEW

## SMEB COST: ONE MONTH & SIX MONTHS TREND



## SMEB COST RANGES (SYP), BY SUB-DISTRICTS & COMMUNITIES



# NORTHWEST SYRIA - SMEB FOOD ITEMS

## MEDIAN SMEB COST: FOOD ITEMS

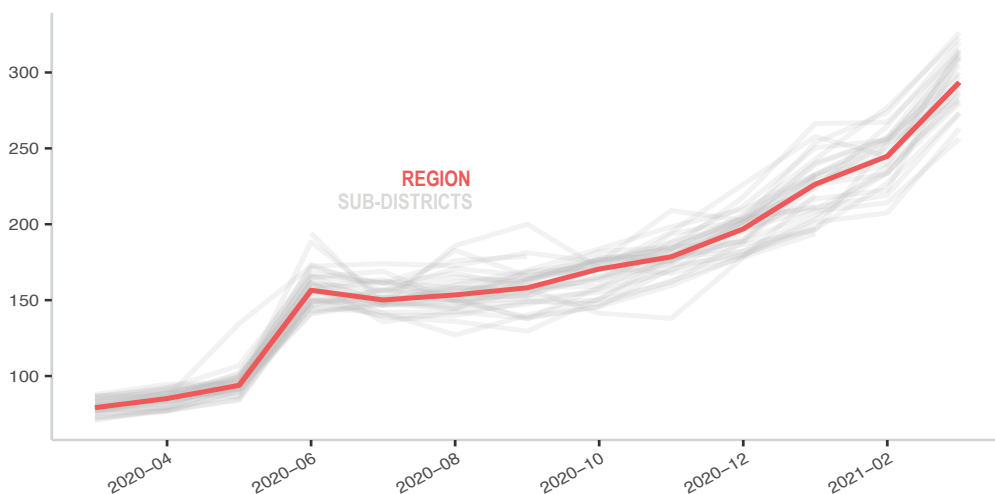
See Page 1, Syrian Pounds

Sub-district	SMEB Food	One month change	Six month change	Sub-district	SMEB Food	One month change	Six month change
Northwest Syria	293,525	20%	84%	Harim	282,450	12%	83%
Aghtrin	273,350	20%	98%	Idleb	293,245	20%	77%
Al Bab	263,025	27%	89%	Janudiyeh	292,200	17%	72%
Ariha	NA	NA	NA	Jarablus	285,809	22%	94%
Armanaz	322,886	17%	99%	Jisr-Ash-Shugur	293,525	15%	84%
Ar-Ra'ee	279,900	19%	100%	Kafr Takharim	319,710	21%	90%
Atareb	326,400	19%	80%	Maaret Tamsrin	287,700	18%	78%
A'zaz	309,500	39%	105%	Mare'	290,650	25%	78%
Badama	273,025	25%	66%	Mhambal	299,880	17%	89%
Bennsh	310,175	22%	87%	Qourqeena	314,563	31%	103%
Dana	297,646	16%	81%	Salqin	315,290	23%	102%
Daret Azza	304,717	19%	99%	Suran	281,350	18%	104%
Darkosh	312,900	17%	85%	Tefnaz	311,480	27%	56%
Ghandorah	256,450	20%	72%				

\* For this sub-district, more than 50% of the SMEB food items median price rely on less than 3 observations.

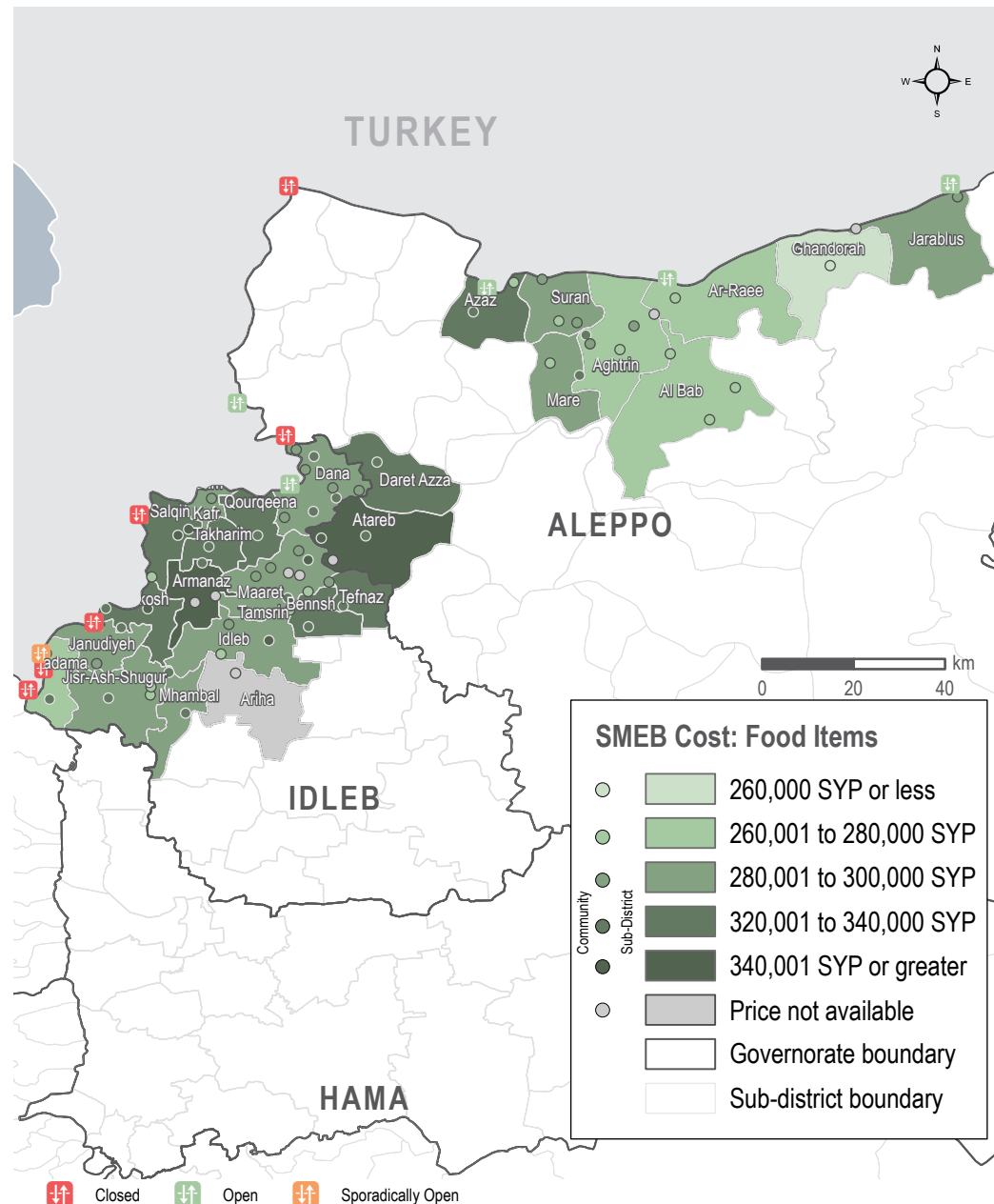
## MEDIAN SMEB COST: FOOD ITEMS, BY MONTH

Thousand Syrian Pounds



## SMEB FOOD ITEMS' COST

Sub-districts & Communities, Syrian Pounds



# NORTHWEST SYRIA - SMEB COOKING FUEL

## MEDIAN SMEB COOKING FUEL PRICE

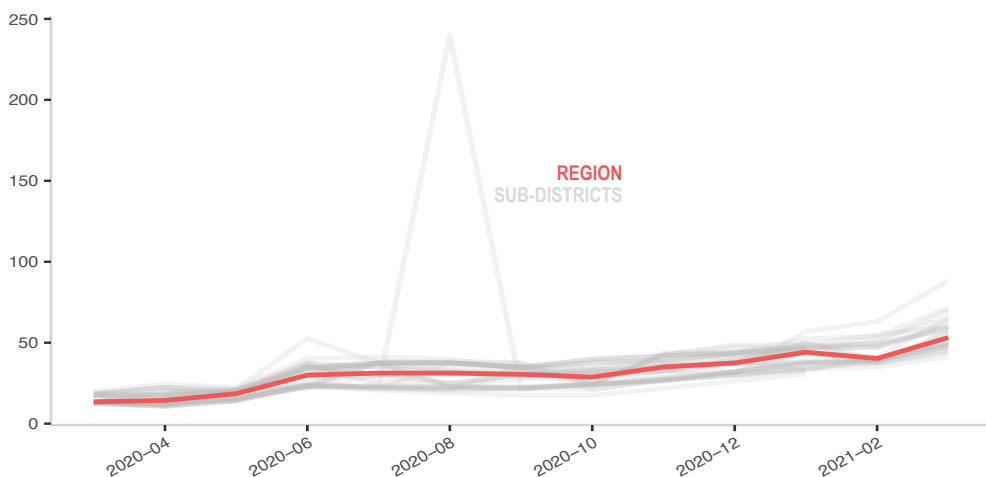
Kerosene 25L and LPG 20L, Syrian Pounds

Sub-district	SMEB Cooking Fuel	One month change	Six month change	Sub-district	SMEB Cooking Fuel	One month change	Six month change
Northwest Syria	53,234	32%	76%	Harim	57,500	15%	53%
Aghtrin	57,500	53%	92%	Idleb	88,375	40%	304%
Al Bab	65,000	58%	113%	Janudiyeh*	48,125	24%	114%
Ariha*	47,625	23%	123%	Jarablus	45,000	20%	50%
Armanaz	71,500	32%	102%	Jisir-Ash-Shugur	60,000	26%	71%
Ar-Ra'ee*	43,750	17%	59%	Kafr Takharim*	49,469	27%	41%
Atareb*	65,250	24%	101%	Maaret Tamsrin	62,500	32%	79%
A'zaz	41,250	18%	29%	Mare'	50,000	25%	67%
Badama	60,000	28%	75%	Mhambal*	49,750	22%	117%
Bennsh*	47,969	20%	124%	Qourqeena	58,750	21%	57%
Dana	70,000	40%	100%	Salqin	60,000	9%	80%
Daret Azza*	50,281	24%	130%	Suran	56,188	50%	84%
Darkosh*	48,750	24%	124%	Teftnaz*	47,188	18%	113%
Ghandorah*	45,000	20%	50%				

\* For these sub-districts, 50% or more the median prices of cooking fuels rely on less than 3 observations.

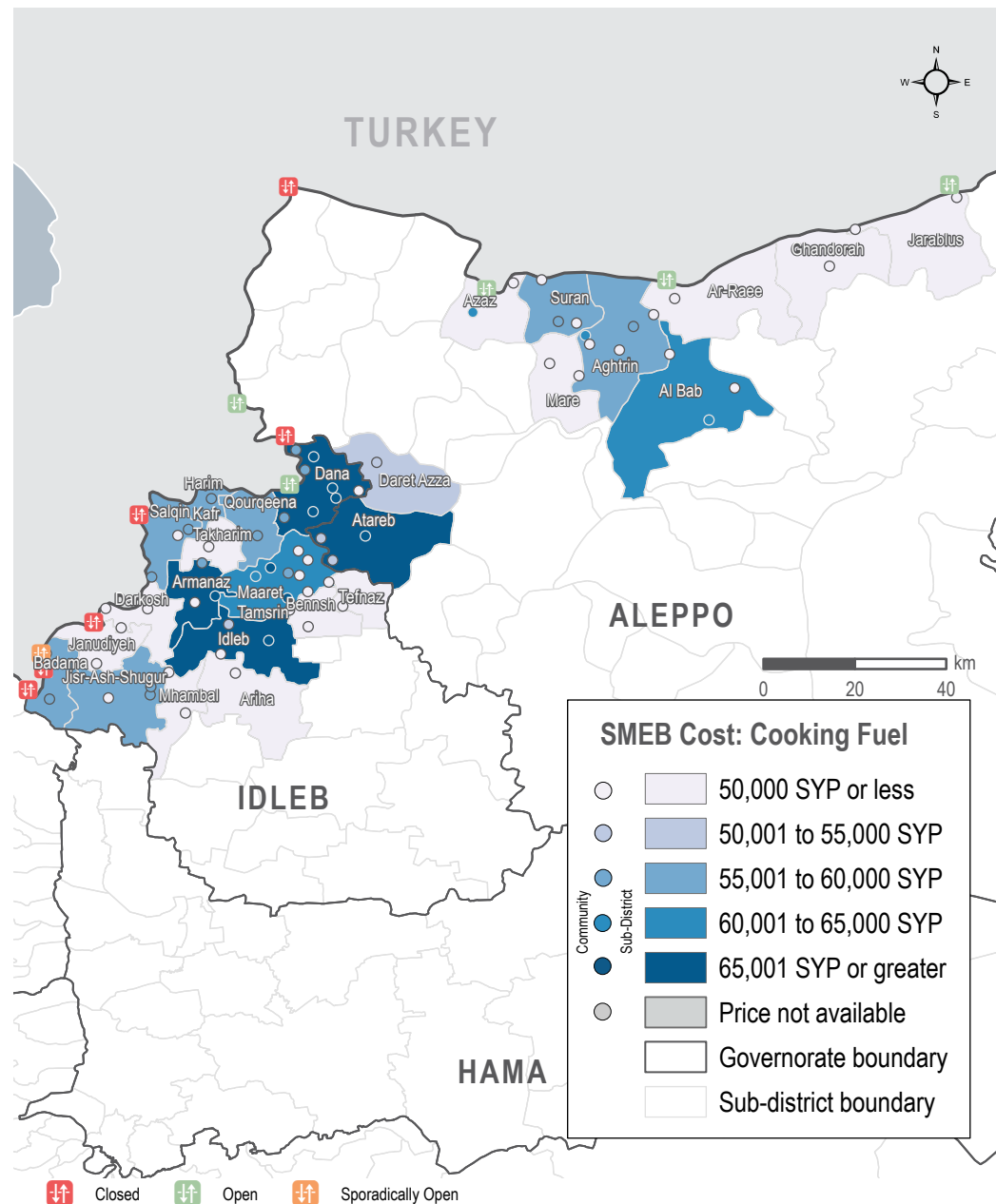
## MEDIAN SMEB COOKING FUEL COSTS, BY MONTH

Thousand Syrian Pounds



## SMEB COOKING FUEL COST

Sub-districts & Communities, Syrian Pounds



# NORTHWEST SYRIA - SMEB WATER TRUCKING

## MEDIAN SMEB WATER TRUCKING PRICE

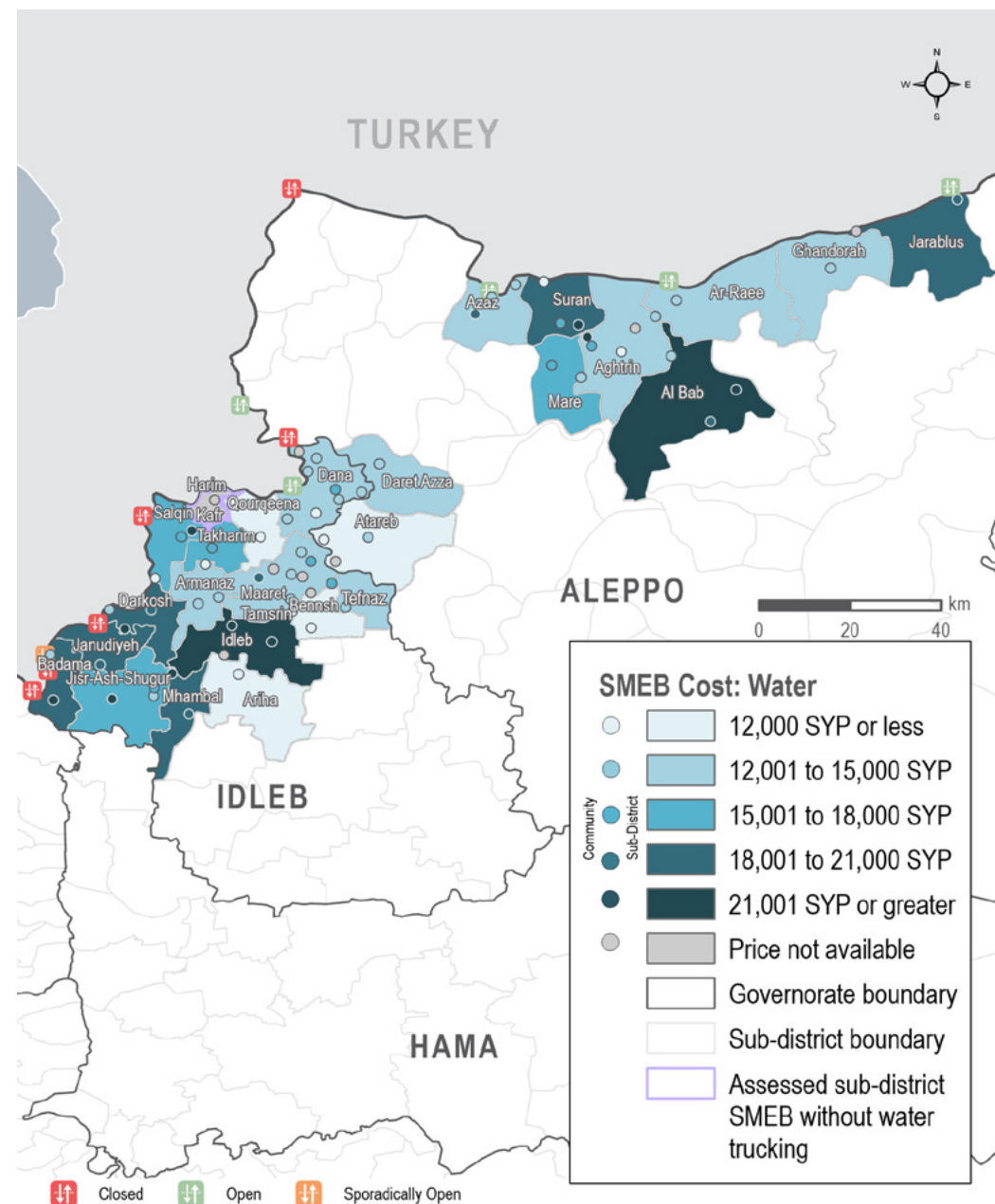
4,500L, Syrian Pounds

Sub-district	SMEB Water Truck	One month change	Six
Northwest Syria	14,715	22%	62%
Aghtrin	14,625	27%	42%
Al Bab	21,375	43%	81%
Ariha	10,710	25%	18%
Armanaz	13,410	5%	75%
Ar-Ra'ee	13,995	16%	40%
Atareb	11,835	17%	46%
A'zaz	13,648	16%	21%
Badama	19,395	61%	100%
Bennsh	11,700	31%	86%
Dana	12,780	20%	58%
Daret Azza	13,950	57%	107%
Darkosh	20,250	25%	103%

Sub-district	SMEB Water Truck	One month change	Six
Ghandorah	14,625	30%	30%
Harim	NA	NA	NA
Idleb	26,483	34%	114%
Janudiyeh	18,765	19%	317%
Jarablus	19,125	55%	55%
Jisr-Ash-Shugur	15,525	35%	73%
Kafr Takharim	17,208	217%	126%
Maaret Tamsrin	14,715	22%	42%
Mare'	15,840	19%	92%
Mhambal	20,835	19%	118%
Qourqeena	10,227	-55%	127%
Salqin	15,345	17%	83%
Suran	20,993	17%	107%
Teftnaz	13,770	39%	135%

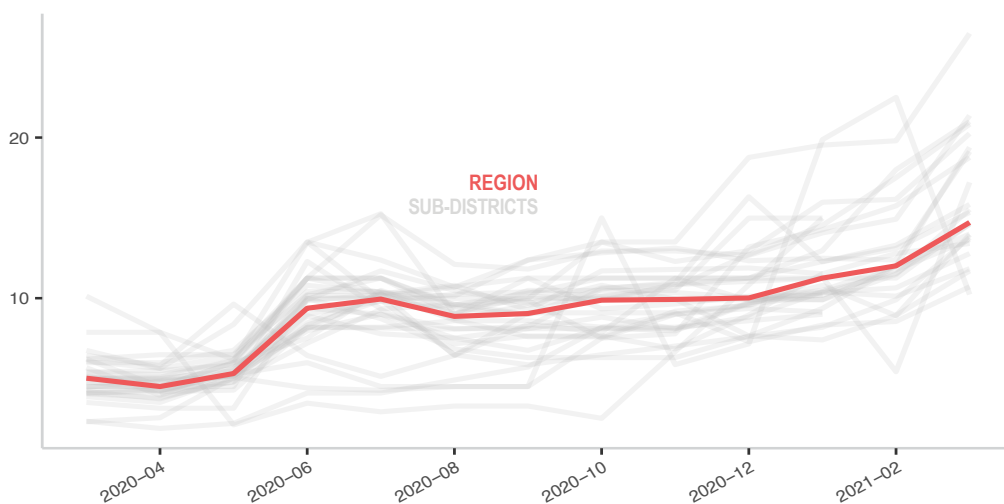
## SMEB WATER TRUCKING COST

Sub-districts & Communities, Syrian Pounds



## MEDIAN SMEB WATER TRUCKING COSTS, BY MONTH

Thousand Syrian Pounds



# NORTHWEST SYRIA - SMEB CELLPHONE DATA

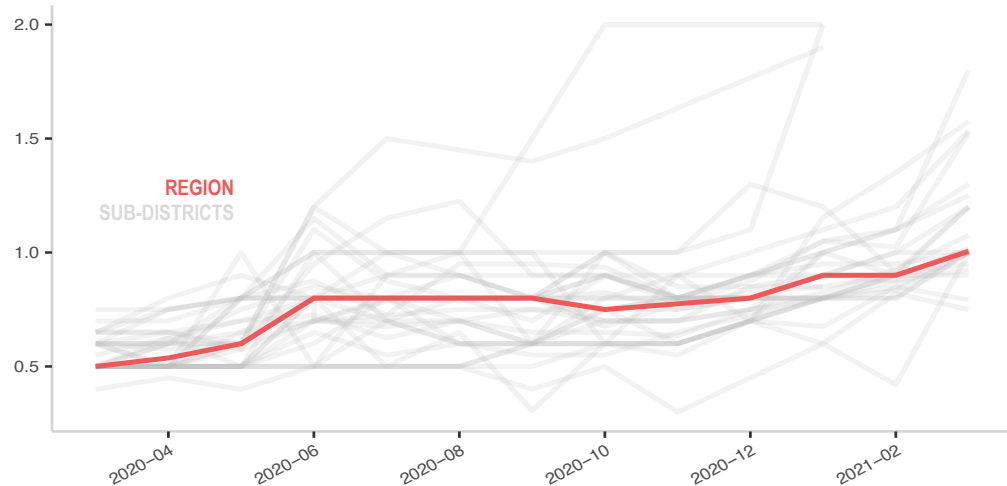
## MEDIAN SMEB CELLPHONE DATA PRICE

1GB data, Syrian Pounds

Sub-district	SMEB Data (1GB)	One month change	Six month change
Northwest Syria	1,005	12%	34%
Aghtrin	1,000	5%	25%
Al Bab	900	0%	50%
Ariha	750	-9%	25%
Armanaz	1,000	20%	25%
Ar-Ra'ee	1,000	25%	67%
Atareb	1,575	17%	58%
A'zaz	1,800	64%	89%
Badama	950	6%	27%
Bennsh	793	-7%	59%
Dana	1,000	0%	25%
Daret Azza	1,533	28%	70%
Darkosh	1,020	17%	70%
Ghandorah	1,250	14%	25%
Harim	1,200	20%	50%
Idleb	1,000	25%	67%
Janudiyeh	1,200	33%	100%
Jarablus	1,300	18%	63%
Jisr-Ash-Shugur	1,010	12%	26%
Kafr Takharim	1,525	49%	69%
Maaret Tamsrin	1,010	12%	35%
Mare'	925	6%	32%
Mhambal	1,000	18%	226%
Qourqeena	1,075	16%	65%
Salqin	1,000	11%	25%
Suran	1,200	32%	100%
Teftnaz	1,000	138%	150%

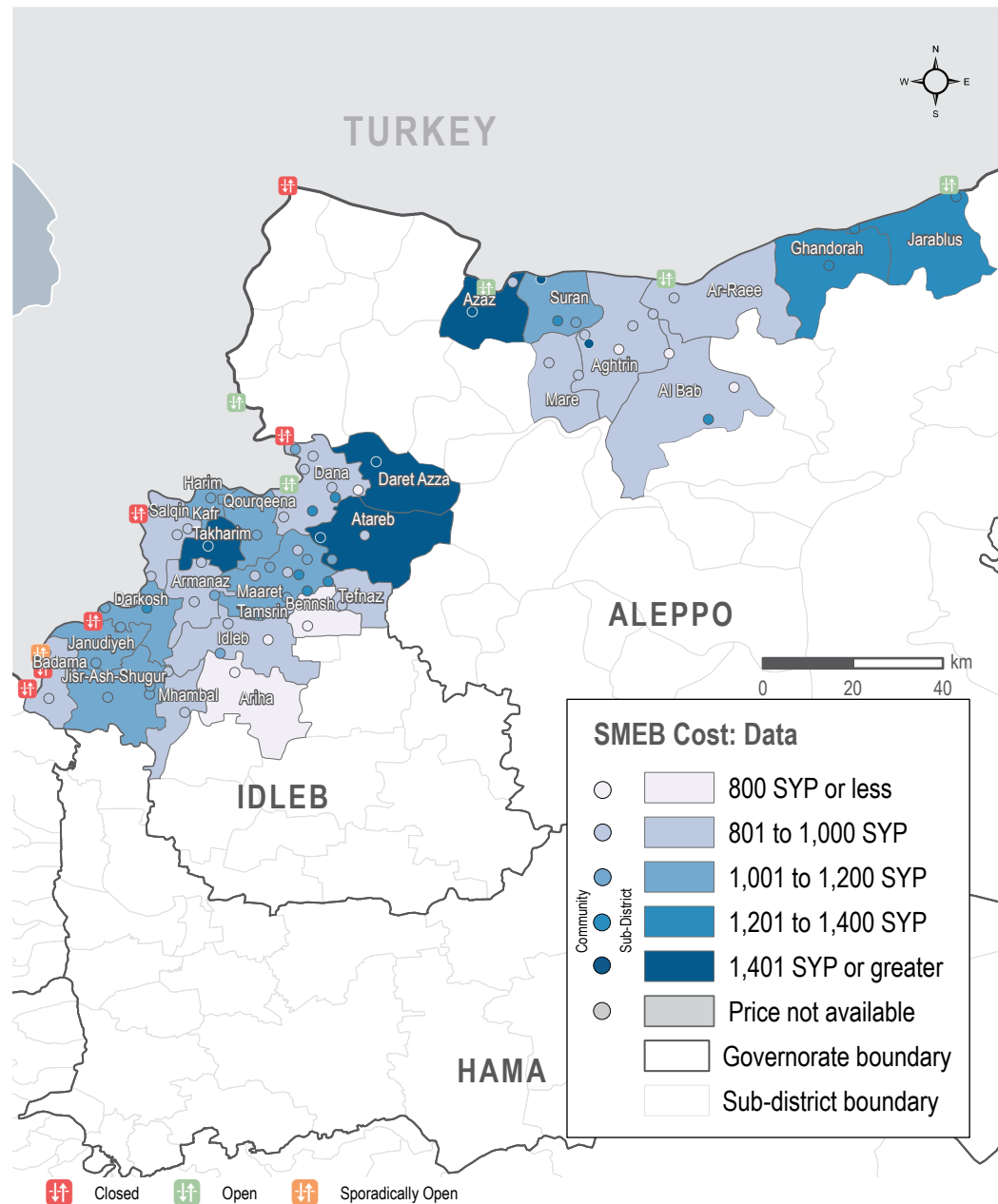
## MEDIAN SMEB CELLPHONE DATA COST, BY MONTH

Thousand Syrian Pounds



## SMEB CELLPHONE DATA COST

Sub-districts & Communities, Syrian Pounds



# NORTHWEST SYRIA - TRANSPORT FUEL

## MEDIAN TRANSPORT FUEL PRICE

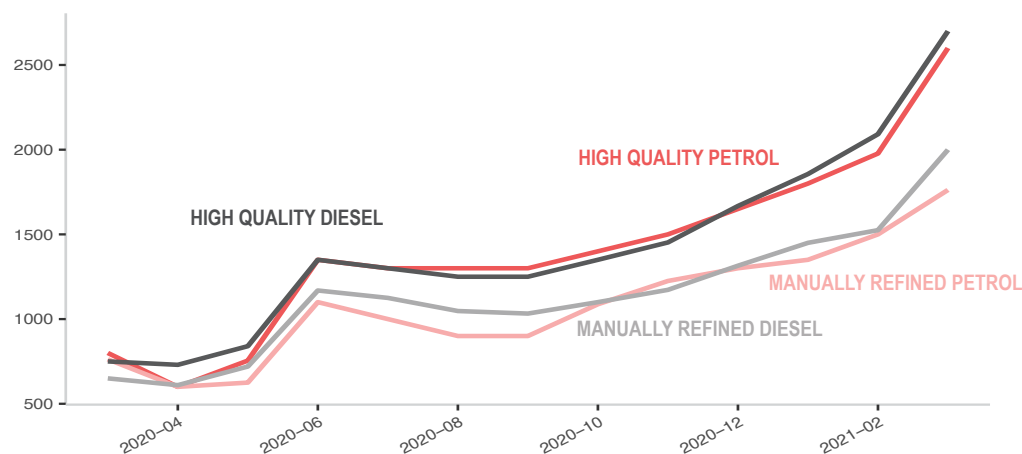
Diesel and Petrol, 1L (High Quality and Manually Refined), Syrian Pounds

Sub-district	Transport Fuel	One month change	Six month change	Sub-district	Transport Fuel	One month change	Six month change
Northwest Syria	2,425	30%	102%	Harim	2,417	31%	86%
Aghtrin	2,113	28%	104%	Idleb	2,433	29%	99%
Al Bab	2,150	27%	105%	Janudiyeh*	2,650	45%	96%
Ariha*	2,563	32%	96%	Jarablus	2,213	28%	101%
Armanaz	2,465	26%	97%	Jisr-Ash-Shugur	2,450	32%	106%
Ar-Ra'ee	2,250	24%	112%	Kafr Takharim	2,443	33%	96%
Atareb	2,522	29%	110%	Maaret Tamsrin	2,305	25%	90%
A'zaz	2,094	26%	83%	Mare'	2,400	40%	112%
Badama	2,363	24%	95%	Mhambal	2,443	28%	92%
Bennsh	2,454	32%	94%	Qourqeena	2,382	26%	90%
Dana	2,462	29%	96%	Salqin	2,490	32%	108%
Daret Azza	2,568	35%	119%	Suran	2,125	18%	101%
Darkosh	2,483	34%	112%	Teftnaz*	2,376	20%	99%
Ghandorah	2,200	30%	107%				

\* For this sub-district, more than 50% of the median prices for the items composing the transport fuel indicator rely on less than 3 observations.

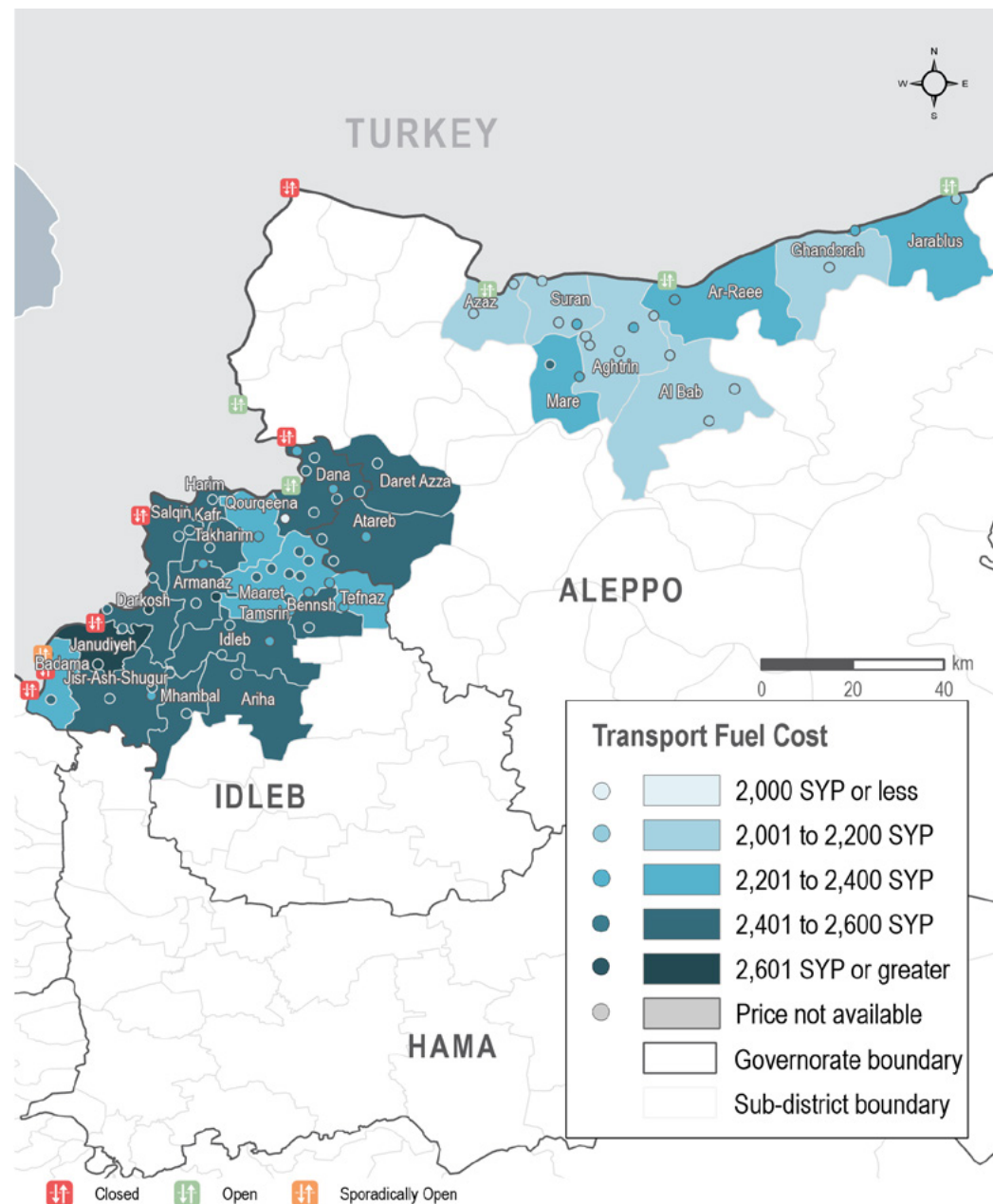
## MEDIAN TRANSPORT FUEL COSTS, BY MONTH & TYPE

Syrian Pounds



## TRANSPORT FUEL COST

Sub-districts & Communities, Syrian Pounds



# NORTHWEST SYRIA - SMEB HYGIENE ITEMS

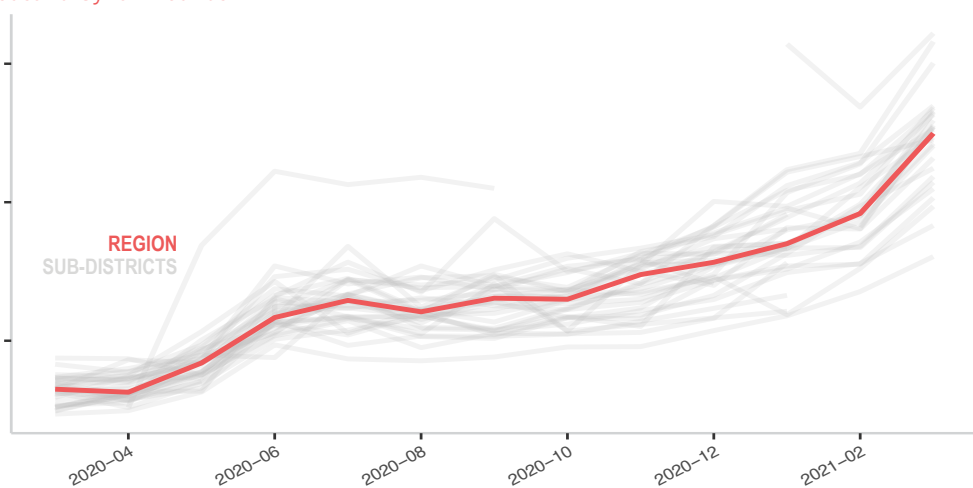
## MEDIAN SMEB HYGIENE ITEMS' PRICE

12 bars of soap, 4 packs of 10 sanitary pads, 200g of toothpaste, 3kg of laundry/dish soap, Syrian Pounds

Sub-district	SMEB Hygiene Items	One month change	Six month change	Sub-district	SMEB Hygiene Items	One month change	Six month change
Northwest Syria	24,975	30%	89%	Harim	24,700	17%	80%
Aghtrin	16,075	19%	82%	Idleb	21,851	30%	69%
Al Bab	20,320	31%	62%	Janudiyeh	25,450	40%	NA
Ariha	31,600	34%	131%	Jarablus	20,973	22%	106%
Armanaz	26,338	23%	147%	Jisr-Ash-Shugur	25,250	14%	72%
Ar-Ra'ee	24,074	29%	101%	Kafr Takharim	26,500	39%	90%
Atareb	32,200	20%	53%	Maaret Tamsrin	25,425	28%	93%
A'zaz	19,700	29%	49%	Mare'	24,250	27%	114%
Badama	26,817	30%	87%	Mhambal	18,319	18%	70%
Bennsh	23,189	28%	53%	Qourqeena	26,600	21%	82%
Dana	26,960	18%	82%	Salqin	25,915	34%	141%
Daret Azza	24,501	5%	76%	Suran	22,450	14%	115%
Darkosh	30,050	32%	136%	Teftnaz	25,559	41%	36%
Ghandorah	21,440	28%	67%				

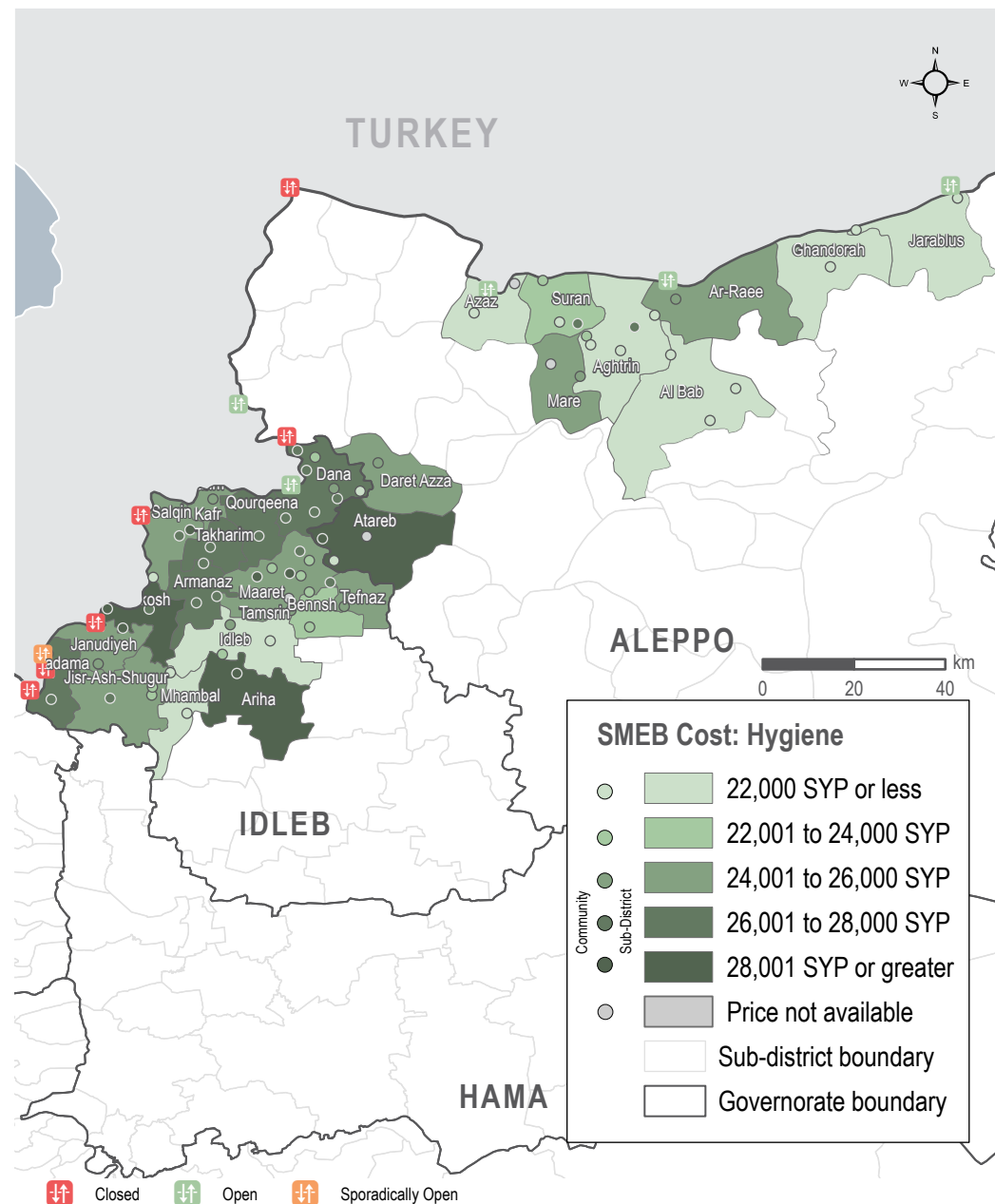
## MEDIAN SMEB HYGIENE ITEMS' COSTS, BY MONTH

Thousand Syrian Pounds



## SMEB HYGIENE ITEMS' COST

Sub-districts & Communities, Syrian Pounds



# NORTHWEST SYRIA - WINTERISATION

## MEDIAN WINTERISATION ITEMS' PRICE

Per 1 piece/pair, Syrian Pounds

Sub-district	Jerrycan	Plastic sheet	Winter carpet	Kerosene/diesel heater	Winter blanket	Mattress	Solid fuel stove	Fire extinguisher	Fire blanket
Northwest Syria	4,000	20,000	95,000	49,500	15,000	19,500	62,125	22,125	16,875
Aghtrin	3,900	18,000	106,000	50,000	15,000	20,000	71,560	NA	NA
Al Bab	3,750	13,000	160,000	45,000	15,500	20,000	45,600	NA	NA
Ariha	NA	NA	NA	NA	NA	NA	NA	NA	NA
Armanaz	3,500	14,250	75,000	38,000	15,750	19,750	47,500	NA	NA
Ar-Ra'ee	3,800	25,000	100,000	54,000	31,500	25,000	48,500	NA	NA
Atareb	4,500	21,000	35,000	30,000	9,000	13,000	40,000	NA	NA
A'zaz	3,500	13,000	165,500	46,000	16,500	19,750	41,000	NA	NA
Badama	6,800	20,500	87,000	51,500	15,500	19,000	82,500	22,000	17,000
Bennsh	3,500	24,925	57,650	26,500	9,150	19,250	48,000	NA	NA
Dana	3,625	17,250	88,500	44,000	14,500	18,350	55,000	22,250	16,750
Daret Azza	3,055	21,300	90,160	40,965	10,510	23,145	50,000	NA	NA
Darkosh	5,500	17,500	95,000	47,500	15,500	15,000	45,000	NA	NA
Ghandorah	4,250	26,000	110,000	68,000	16,500	16,500	52,500	NA	NA
Harim	6,500	20,000	87,000	53,000	14,500	19,000	85,000	NA	NA
Idleb	4,000	12,500	42,500	26,000	12,250	10,500	30,500	49,000	37,500
Janudiyeh	6,000	20,000	95,000	55,000	15,000	20,000	85,000	NA	NA
Jarablus	4,600	29,500	111,000	74,400	37,000	16,700	75,000	NA	NA
Jisr-Ash-Shugur	3,000	20,000	85,000	53,000	15,000	20,000	83,000	NA	NA
Kafr Takharim	3,600	21,050	98,500	49,750	28,750	19,500	69,250	NA	NA
Maaret Tamsrin	5,500	20,000	84,750	50,000	13,750	18,500	83,000	NA	NA
Mare'	5,000	15,750	120,000	45,000	16,500	20,000	70,000	NA	NA
Mhambal	4,600	30,000	130,000	41,000	40,000	16,500	72,000	NA	NA
Qourqeena	4,600	22,000	78,000	50,000	35,000	22,500	85,000	NA	NA
Salqin	4,000	14,075	120,000	49,500	14,000	25,000	50,000	20,000	16,000
Suran	4,000	15,000	122,000	51,900	14,500	19,000	69,560	NA	NA
Teftnaz	3,500	31,900	34,500	12,300	6,200	23,500	NA	NA	NA

\* For these sub-districts, the median price are relying on less than 3 observations.

\*\* NA means data not available.

# NORTHWEST SYRIA - WINTERISATION

## MEDIAN WINTERISATION ITEMS' PRICE - CLOTHES

Per 1 piece/pair, Syrian Pounds

Sub-district	Adult's hat	Children's hat	Second hand men's winter jacket	Second hand women's winter jacket	Second hand children's winter jacket	Second hand men's winter boots	Second hand women's winter boots	Second hand children's winter boots	Second hand adult's hat	Second hand children's hat	Men's winter jacket	Women's winter jacket	Children's winter jacket	Men's winter boots	Women's winter boots	Children's winter boots
Northwest Syria	3,620	2,300	8,900	13,000	6,750	9,000	8,000	5,900	1,725	1,163	50,000	57,500	31,000	19,000	20,000	11,500
Aghtrin	3,500	2,000	7,000	5,500	4,000	8,000	5,000	4,000	1,900	1,200	37,600	37,850	28,500	17,600	13,000	10,250
Al Bab	3,000	2,000	8,000	9,250	4,750	7,500	6,500	4,750	1,500	1,000	42,500	40,000	25,000	22,250	20,000	13,500
Ariha	NA	NA	NA	NA	NA	NA	NA	NA	NA	NA	NA	NA	NA	NA	NA	NA
Armanaz	3,620	2,300	13,000	16,000	7,000	9,000	10,400	7,500	2,000	1,500	50,000	53,000	30,000	19,000	22,000	13,000
Ar-Ra'ee	3,000	2,500	7,000	6,500	5,250	3,750	3,500	3,000	NA	NA	75,000	80,000	45,000	18,500	20,000	15,000
Atareb	6,000	6,000	3,757	9,913	5,565	20,455	5,065	7,630	1,000	1,000	35,910	80,000	24,868	20,250	16,500	17,000
A'zaz	2,000	2,000	8,900	9,250	6,750	8,000	6,500	4,000	1,250	1,250	40,000	34,000	25,000	12,000	10,000	6,500
Badama	3,900	2,500	13,500	16,500	7,500	12,000	13,500	7,500	1,700	1,100	54,000	58,750	35,500	23,000	26,250	15,500
Bennsh	3,500	2,000	4,500	3,800	3,500	7,400	4,500	3,350	1,000	1,000	18,500	22,800	10,500	10,700	10,000	8,900
Dana	3,800	2,200	14,650	17,200	8,000	12,500	13,500	7,250	2,000	1,250	51,500	61,000	35,000	19,000	21,750	12,150
Daret Azza	2,600	1,566	6,525	6,665	5,360	7,415	5,220	3,130	1,044	522	26,100	26,000	20,000	12,000	8,874	6,264
Darkosh	4,500	2,700	14,000	16,000	8,000	12,000	14,000	7,000	1,750	1,000	50,500	63,500	41,500	20,000	21,000	12,000
Ghandorah	3,500	2,500	7,500	7,500	4,750	7,750	6,500	5,000	1,750	1,500	35,000	33,000	17,000	22,000	14,000	12,000
Harim	4,000	2,150	15,000	18,000	8,000	12,000	14,000	7,500	1,900	1,100	52,500	65,000	37,500	19,500	22,500	11,500
Idleb	3,700	2,300	15,500	18,750	7,750	13,500	14,000	6,750	2,250	1,350	49,250	57,500	31,000	20,250	21,250	11,250
Janudiyeh	3,750	2,500	14,000	17,000	8,000	12,000	14,000	7,000	2,000	1,300	52,000	63,500	37,000	20,000	22,000	11,000
Jarablus	3,500	2,300	8,500	7,000	4,000	7,500	7,000	5,500	1,500	1,000	47,000	40,000	26,000	26,600	20,900	15,200
Jisr-Ash-Shugur	3,000	2,000	14,000	16,000	7,000	11,000	13,000	6,500	1,800	1,100	51,000	60,000	35,000	18,000	21,000	11,000
Kafr Takharim	5,000	3,000	7,500	13,000	6,500	8,500	5,500	5,000	1,250	1,000	41,000	43,250	30,250	18,000	14,125	9,500
Maaret Tamsrin	3,500	2,300	14,000	16,000	7,500	10,250	12,100	5,500	1,800	1,175	50,000	62,000	35,000	19,000	22,000	11,000
Mare'	4,000	3,000	8,250	9,250	5,000	13,250	11,000	6,250	2,000	1,200	50,000	65,000	35,000	25,000	20,000	15,000
Mhambal	3,225	2,150	15,750	24,500	7,900	9,750	10,500	5,900	1,300	1,150	59,250	64,500	32,000	18,100	18,750	9,750
Qourqeena	3,750	2,200	4,500	13,750	3,250	7,000	8,750	6,250	1,400	1,500	50,000	57,500	35,000	16,000	20,000	12,000
Salqin	3,850	2,788	20,000	24,500	8,000	9,000	8,000	7,000	1,700	1,300	53,500	67,500	36,500	18,000	16,725	13,225
Suran	4,000	2,400	10,000	10,000	8,000	6,000	5,000	3,000	2,000	1,600	40,000	35,000	25,000	12,000	11,150	6,000
Teftnaz	3,000	2,000	4,500	3,200	3,200	7,300	4,700	3,400	1,000	1,000	19,000	22,500	10,500	10,500	9,800	8,500

\* For these sub-districts, the median price are relying on less than 3 observations.

\*\* NA means data not available.

# NORTHWEST SYRIA - WINTERISATION

## MEDIAN ALTERNATIVE FUELS PRICE

Per 1 kilo, Syrian Pounds

Sub-district	Firewood	Olive residues	Pistachio shells	Coal
Northwest Syria	480	450	550	440
Aghtrin	499	450	550	450
Al Bab	510	465	480	478
Ariha	NA	NA	NA	NA
Armanaz	450	416	520	390
Ar-Ra'ee	400	500	NA	500
Atareb	460	420	520	513
A'zaz	450	438	480	440
Badama	513	500	625	450
Bennsh	400	400	650	450
Dana	450	418	550	415
Daret Azza	458	475	522	496
Darkosh	375	420	530	400
Ghandorah	500	350	NA	542
Harim	500	460	575	400
Idleb	480	450	530	400
Janudiyeh	513	475	600	425
Jarablus	420	377	555	580
Jisr-Ash-Shugur	413	405	550	400
Kafr Takharim	650	500	785	450
Maaret Tamsrin	500	475	550	425
Mare'	505	450	475	500
Mhambal	345	488	NA	488
Qourqeena	525	450	570	425
Salqin	500	475	575	425
Suran	499	470	500	413
Teftnaz	400	500	590	400

\* For these sub-districts, the median price are relying on less than 3 observations.

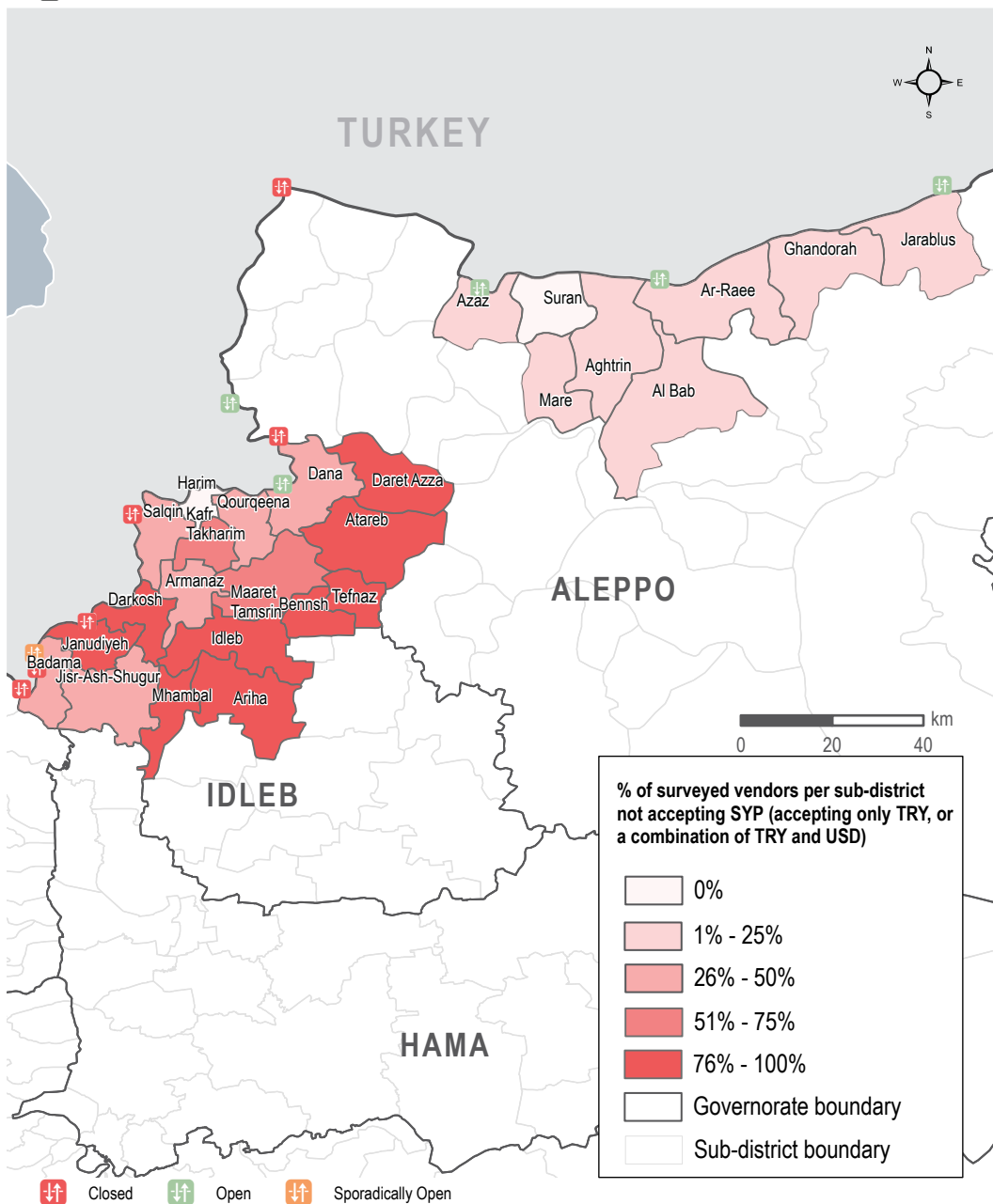
\*\* NA means data not available.

# NORTHWEST SYRIA - MARKET FUNCTIONALITY



## SURVEYED VENDORS NOT ACCEPTING SYRIAN POUNDS

Sub-districts



## MARKET FUNCTIONALITY

In March, of the 2,343 surveyed vendors, 6 vendors in Idleb governorate reported having closed their shops.



## SUPPLY CHALLENGES

During the data collection period, vendor supply challenges and their prevalence in NWS fluctuated somewhat similarly to January and February. Of the 2,343 surveyed vendors in NWS, 84% reported facing one or more supply challenges in March (recorded at 81% in January, 83% in February). As in previous months, price inflation was the most common supply challenge, reported by 82% of vendors. This was most commonly reported in Idleb governorate where 87% of vendors reported this issue. Seemingly widespread price inflation may also impact vendors' ability to keep markets stocked with essential items, creating a further supply challenge. Beyond price inflation, 5% of all surveyed vendors reported that closed border crossings and 4% reported that their suppliers having limited supply created a supply challenge (see figure 1).



## RESTOCKING

While supply challenges were reported, most vendors reported that they would be able to restock if they were to run out of supplies. 1%, or 16 out of the 2,343 surveyed vendors reported that they would be unable to do so. Surveyed vendors were asked after how many days they would hypothetically run out of stock if supply was to be cut; 36% of respondents reported that they would run out of stock in less than 3 days (this remains the same as in December, January and February) and 25% reported they would run out in 3 to 7 days, marking a 1% decrease since February (see figure 2). Among surveyed vendors, butchers (74%) water vendors (73%) and vegetable vendors (71%) most frequently reported that they would run out in less than 3 days if their supply lines were cut. Overall, 36% of all surveyed vendors reported that they would run out in less than 3 days if their supply lines were cut, which remained the same as in January and February.

Figure 2: Reported number of days before all types of vendors would hypothetically run out of stock, if supply lines were to be cut (2,343 respondents)



## AVAILABILITY OF USD BANKNOTES

Of the 201 surveyed informal exchange vendors who were asked if they had limited stock of any USD banknote denominations, 100% of surveyed vendors in Idleb governorate and 88% of surveyed vendors in Aleppo governorate reported having limited stock of one or more denominations.

Shortages of small banknotes were more commonly reported by surveyed vendors in Idleb and Aleppo governorate, most frequently for 20 USD banknotes (reported by 68% of all surveyed vendors) and 10 USD banknotes (64% of surveyed vendors). 5 USD banknotes were reported as being in limited stock by 59% of all surveyed vendors.



## CURRENCIES ACCEPTED

Surveyed vendors were also asked about the type(s) of currencies they accepted in their shops. In March, 93% of surveyed vendors reported selling their goods not exclusively in SYP or not in SYP at all. Significant differences in currency usage between governorates were also noted; while 21% of surveyed vendors in Aleppo reported selling their goods in SYP only, no vendors in Idleb reported the same (0%). Surveyed vendors in Idleb, however, more commonly reported selling items in TRY only (reported by 49%), compared to only 15% of vendors in Aleppo who reported the same. Additionally, 19% of vendors in Idleb reporting accepting currency combinations that included the USD (a 12% increase since February) compared to 18% of vendors in Aleppo (a 5% increase from February). In Aleppo, vendors most commonly reported selling items in both SYP and TRY (46%), but vendors in Idleb most commonly reported selling items in TRY only (49%, no change since February).

# NORTHWEST SYRIA - COVID-19



## MEDIAN PRICE OF COVID-19 ITEMS

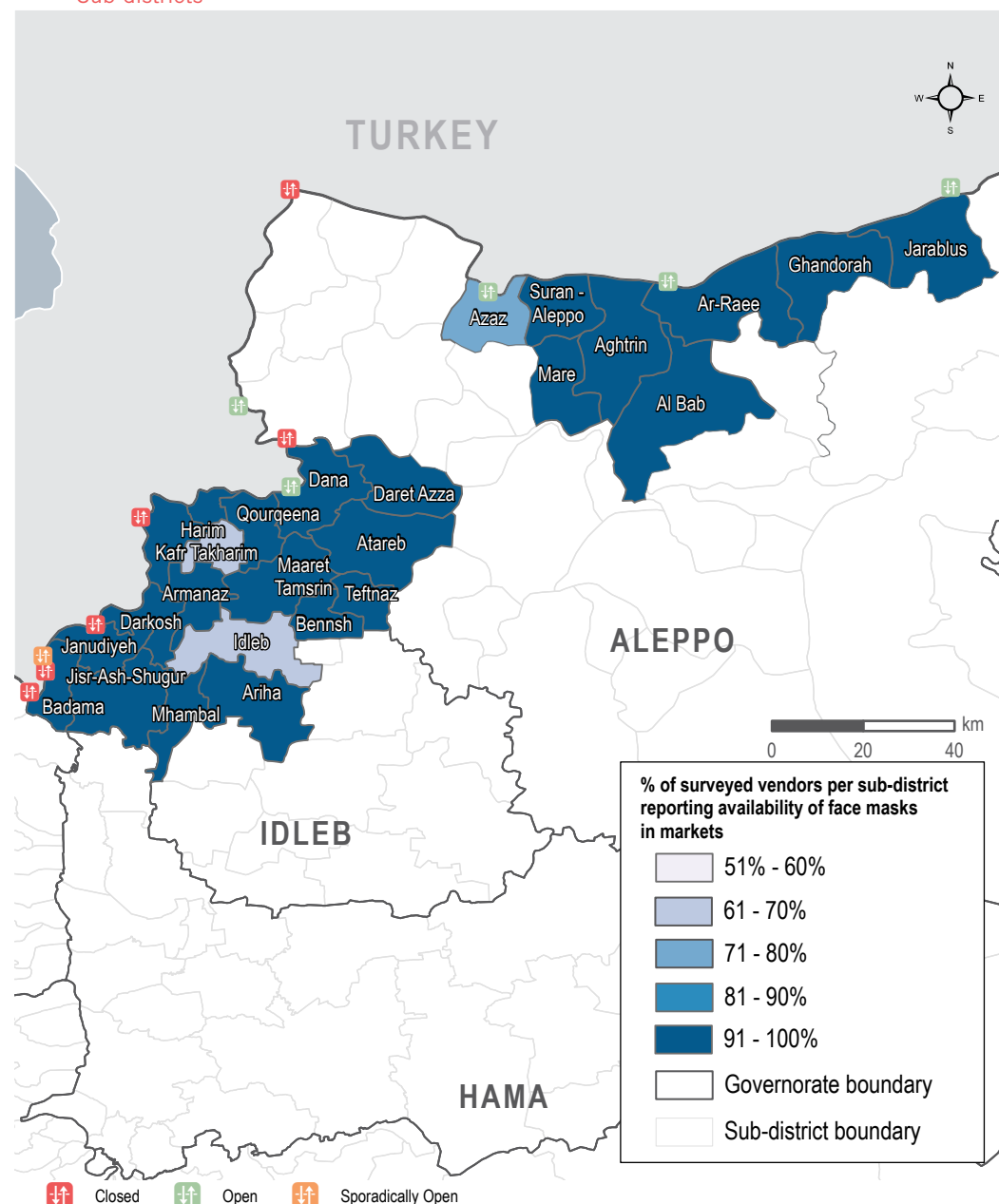
Syrian Pounds



## AVAILABILITY OF FACE MASKS

Sub-districts

Sub-district	Face mask (1 piece)	Plastic gloves (box of 100)	Sterile alcohol (1 litre)	Hand sanitiser (500 ml)	Bottled bleach (1 litre)	Trash bags (roll of 30)
Northwest Syria	500	23,500	9,000	5,250	2,000	3,750
Aghtrin	500	25,000	9,000	5,800	1,800	3,000
Al Bab	300	27,500	8,000	3,200	2,100	2,550
Ariha	500	29,000	NA	NA	2,450	NA
Armanaz	500	25,000	10,625	5,500	2,000	4,250
Ar-Ra'ee	400	25,000	8,300	3,600	2,500	3,000
Atareb	450	19,000	10,000	7,600	2,050	3,800
A'zaz	500	29,000	11,500	3,700	2,000	3,650
Badama	500	22,000	8,250	5,975	1,900	3,950
Bennsh	500	32,000	12,500	3,000	1,600	6,000
Dana	500	20,450	9,750	5,000	2,225	3,950
Daret Azza	500	26,450	8,100	4,500	2,000	3,450
Darkosh	500	23,400	21,600	7,700	2,000	4,200
Ghandorah	400	23,500	7,900	3,800	1,850	1,740
Harim	500	23,500	8,500	6,000	2,500	3,800
Idleb	500	12,550	8,500	6,800	1,600	4,000
Janudiyeh	500	23,000	8,500	6,000	2,500	4,000
Jarablus	400	25,700	9,100	4,750	2,000	2,010
Jisr-Ash-Shugur	500	22,000	8,750	6,000	1,800	3,875
Kafr Takharim	500	23,500	10,000	6,000	1,600	3,700
Maaret Tamsrin	500	22,000	8,000	5,850	2,000	3,700
Mare'	500	20,000	6,000	4,000	1,800	3,750
Mhambal	550	35,750	21,000	7,200	1,800	2,700
Qourqeena	450	20,700	7,750	4,650	2,500	3,650
Salqin	500	21,000	11,000	5,250	1,900	4,600
Suran	375	29,000	9,000	3,550	2,300	3,000
Teftnaz	550	36,500	12,500	2,500	1,750	6,500



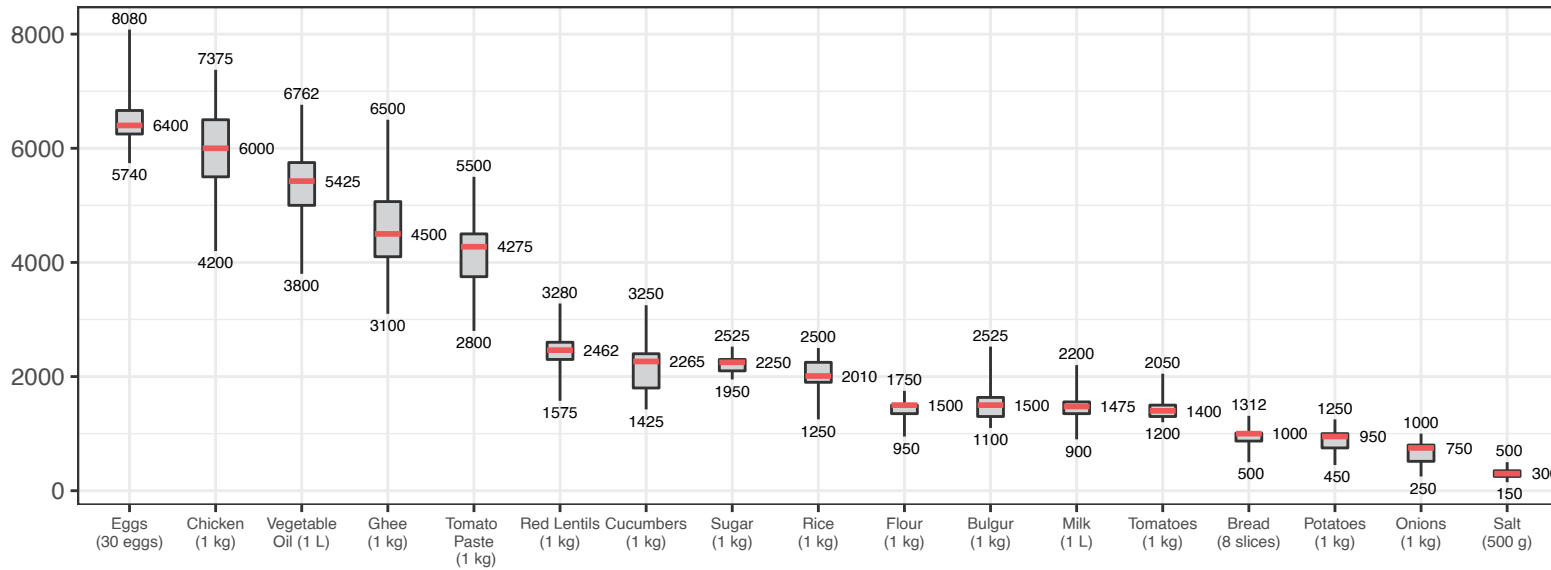
\* For these sub-districts, the median price are relying on less than 3 observations.

\*\* NA means data not available.

# NORTHWEST SYRIA - DISTRIBUTION OF PRICES

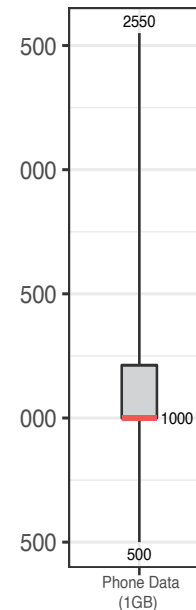
## ASSESSED FOOD ITEMS

Syrian Pounds



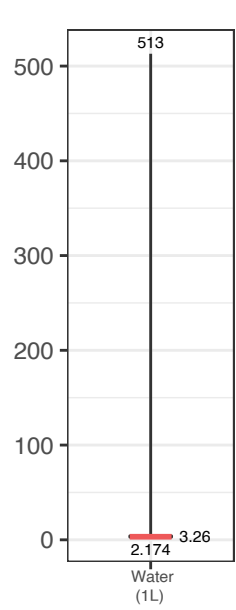
## CELLPHONE DATA

Syrian Pounds



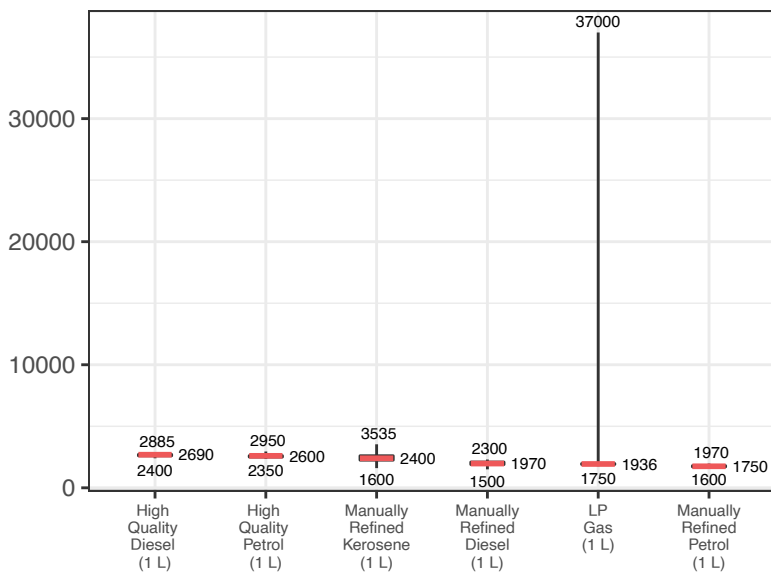
## WATER TRUCKING

Syrian Pounds



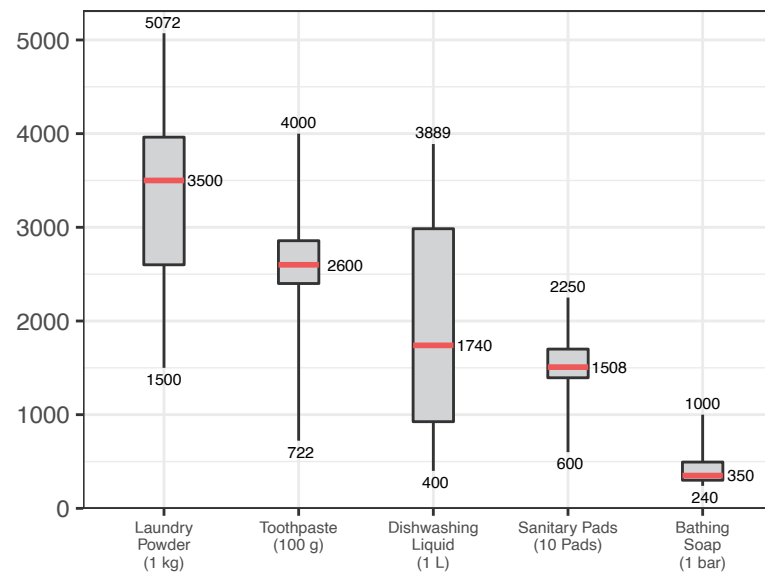
## ASSESSED FUEL ITEMS

Syrian Pounds

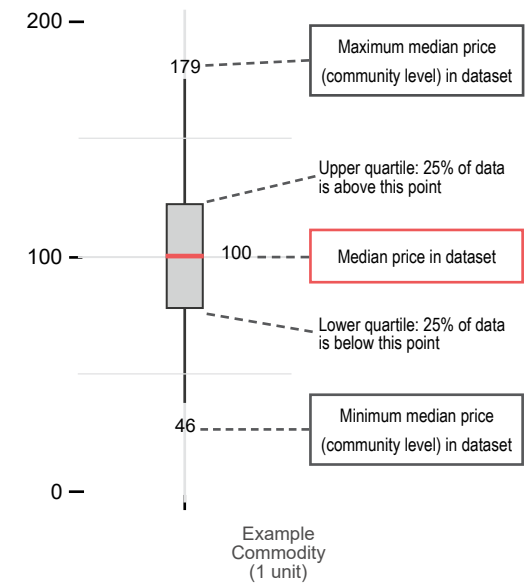


## ASSESSED HYGIENE ITEMS

Syrian Pounds



## READING BOXPLOTS



## METHODOLOGY

In order to be included in the Syria Market Monitoring Exercise, markets must be permanent in nature, large enough to support at least two wholesalers, and diverse enough to provide a sufficient variety of goods and commodities. Additionally, the shops surveyed within each market must be housed in permanent structures and must sell certain items to be eligible for inclusion. Participating organisations train their enumerators on the Market Monitoring methodology and data collection tools using standard training materials developed by REACH. Each enumerator aims to assess three to five shops of each type in the main market in their assigned community/ neighbourhood, using surveys to collect information about the cheapest prices of each item and whether there are any barriers in the supply chain. In sub-districts where direct surveying by enumerators is not possible, data collection is conducted remotely through key informants such as shop owners, suppliers and consumers. A survey form is deployed on KoBo each month to capture price and stock information from different types of establishments, including grocery stores, fuel traders, currency exchange shops, water trucking services and mobile phone shops, among others. Nearly all participating partners submit their data to these KoBo forms, using the KoBoCollect Android app to upload data. A small number of partners, by prior permission, collect data using fully harmonised data collection tools deployed on other platforms, then submit their raw data to REACH for standardisation, compilation and cleaning.

Following data collection, REACH compiles and cleans all partners' data, normalising prices and cross-checking outliers. The cleaned data is then analysed by SMEB costs, components of the SMEB, and by commodities. These trends are observed at the sub-district-level and, when possible, at the community-level. Prices are divided into quartiles and boxplots are created

to assist CWG members in understanding the distribution of prices across the northeast and northwest of Syria. To illustrate local variations in prices and availability, REACH uses the collected data to map the price of the SMEB in each sub-district and adds illustrations of surrounding border crossings, with data sourced from the United Nations Office for the Coordination of Humanitarian Affairs (OCHA). In addition, each SMEB component costs and transport fuel prices are graphed to visualise trends over time.

The cleaned datasets are available on the [Humanitarian Data Exchange](#) website and the [REACH Resource Centre](#) and are distributed to all participating partners, as well as to interested clusters and the broader humanitarian community.

### Calculating 'median cheapest price'

The regional figures are calculated by taking the median of the minimum-reported prices of a region's sub-districts. In turn, the sub-district medians are calculated using the Market Monitoring base-data.

### Calculating Survival Minimum Expenditure Basket (SMEB) costs

The cost of a SMEB is calculated for each assessed sub-district by calculating the median cheapest price of each SMEB commodity in that sub-district, then multiplying these medians by the number of units that an average Syrian household requires to purchase in a month. The composition of the SMEB can be found on [page 1](#). SMEB vegetables include potatoes, tomatoes, onions, and cucumbers.

### Calculating price trends over time

One month and six-month price changes and trends in this factsheet are calculated only with the comparable assessed communities of a sub-district with consistent coverage across months. On the other hand, in the dataset, medians are calculated taking all

assessed communities for the current month in consideration. Therefore, prices and percentage changes within the tables of this factsheet may slightly differ from the current month's dataset medians. In the narrative, both regional median SMEB values are shared; the SMEB value including all assessed communities that specific month, and the SMEB value only taking in consideration communities with consistent coverage since the previous month.

### Changes to coverage

Given security and access constraints in the south of Syria, data collection has been unable to take place since July 2018. Escalation of conflict in October 2019 has resulted in limited coverage in northeast Syria in the months following the escalation.

### Challenges and limitations

As the Syria Market Monitoring Exercise currently includes 26 partners based in 2 hubs, achieving a consistent approach is inherently challenging. Participating organisations are therefore requested to adopt harmonised data collection methodologies and tools to ensure that the data uploaded is as accurate as possible. Since this exercise collects data directly from vendors and relies on partner organisations for its wide coverage, Market Monitoring may sporadically lose coverage temporarily or for longer periods of time due to challenges in accessing locations or loss in the shared data collection capacity of the project. This impacts the ability to report on trends, as can be seen in the line graphs and 'NA' values in the tables.

## ABOUT REACH

REACH Initiative facilitates the development of information tools and products that enhance the capacity of aid actors to make evidence-based decisions in emergency, recovery and development contexts. The methodologies used by REACH include primary data collection and in-depth analysis, and all activities are conducted through inter-agency aid coordination mechanisms. REACH is a joint initiative of IMPACT Initiatives, ACTED and the United Nations Institute for Training and Research - Operational Satellite Applications Programme (UNITAR-UNOSAT). For more information please visit our website:

[www.reach-initiative.org](http://www.reach-initiative.org). You can contact us directly at: [geneva@reach-initiative.org](mailto:geneva@reach-initiative.org) and follow us on Twitter [@REACH\\_info](https://twitter.com/REACH_info)

## ABOUT THE CASH WORKING GROUP

The Cash Working Group (CWG) was established in May 2014 to analyse the impact of the ongoing conflict on markets in Syria and guide the implementation of humanitarian cash and voucher programmes within those markets. REACH and the CWG have been partners on the Syria Market Monitoring Exercise since early 2015.

## About REACH's COVID-19 response

As an initiative deployed in many vulnerable and crisis-affected countries, REACH is deeply concerned by the devastating impact the COVID-19 pandemic may have on the millions of affected people we seek to serve. REACH is currently working with Cash Working Groups and partners to scale up its programming in response to this pandemic, with the goal of identifying practical ways to inform humanitarian responses in the countries where we operate. COVID-19-relevant market monitoring and market assessments are a key area where REACH aims to leverage its existing expertise to help humanitarian actors understand the impact of changing restrictions on markets and trade. Updates regarding REACH's response to COVID-19 can be found in a [devoted thread](#) on the REACH website. Contact [geneva@impact-initiatives.org](mailto:geneva@impact-initiatives.org) for further information.