



Introduction

While an estimated 2.1 million people live in displacement sites in Somalia¹, existing information on exact locations and site level vulnerabilities is sparse, and existing assessments have been ad-hoc and unharmonised, resulting in low comparability and verification.

The Detailed Site Assessment (DSA) was triggered in coordination with the Camp Coordination and Camp Management (CCCM) Cluster in order to provide the humanitarian community with up-to-date information on location of internally displaced persons (IDP) sites, the conditions and capacity of the sites and the humanitarian needs of the residents.

Target locations for assessment were selected based on needs identified by the CCCM Cluster

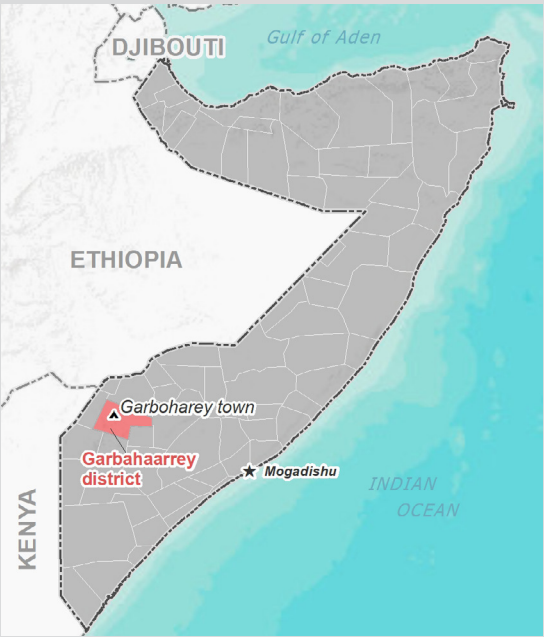
and accessibility for data collection.

A grid pattern approach² was applied during data collection to ensure that all IDP sites in the target area were identified. In each site, two key informant (KI) interviews were conducted: one with the site manager or community leader and one with a women's representative to ensure the perspectives of different groups were captured³. KI responses were aggregated to give one response per question per site.

This factsheet presents a summary of Ceelwaran Site profile along with the needs and priorities of IDPs residing in the site. As the data is captured through KIs, findings should be considered indicative only.

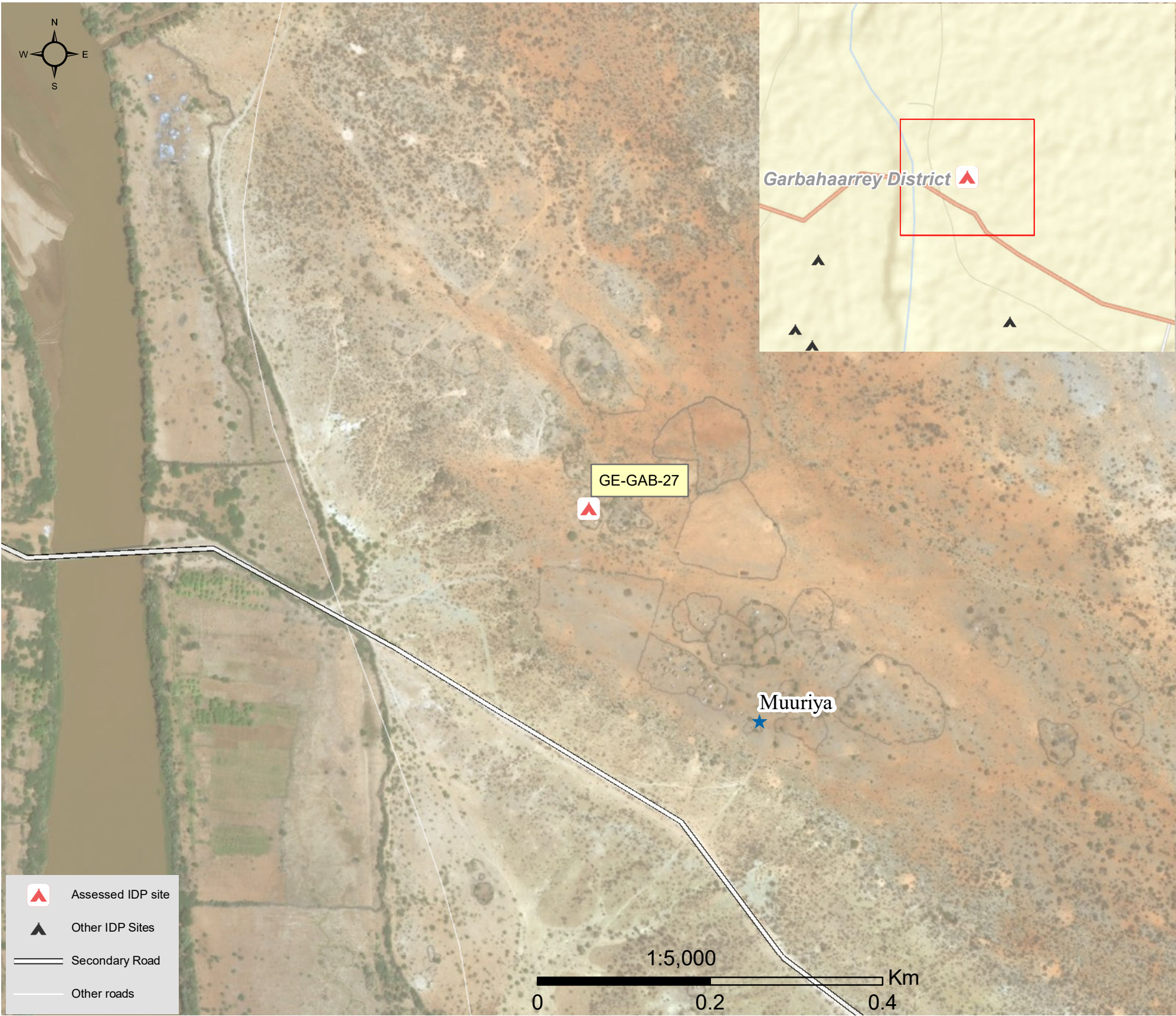
Date assessed: **Dec - 2017**

Location map



Assessed IDP sites in Garbahaarrey

Coordinates: Lat. 3.1737008, Long. 42.5078186



1.United Nations High Commissioner for Refugees (UNHCR): Protection & Return Monitoring Network (PRMN), September 2017

2.For each target location, the area was divided into 1km² grids. Enumerator teams then visited each grid to verify whether an IDP site was present. By visiting all grids, teams were able to determine the total number of sites in each location.

3.Where KI responses were significantly divergent, these were verified with the respective KIs with a higher reliability accorded to the response provided by the site manager or community leader.





Site Information

Settlement type	Spontaneous Site
Estimated number of individuals	2000
Estimated number of households	400
Site capacity reached	Yes
Responsible management agency	Residents
Date when most site residents arrived	Apr-16
Site owner	None



Protection

Number of vulnerable households:	
Female-headed households	20
Child-headed households	10
Elderly individuals ⁴	400
Unaccompanied children	20
Individuals with a physical disability	20
Presence of shared community space	No
Presence of separate space for women/girls	No
Presence of child friendly space	No
Public lighting in the site	No
Type of landownership	N/A
Risk of eviction in next three months	No



WASH

Access to potable water	No
Number of latrines in the site:	
Latrines (mixed)	0
Latrines (male)	0
Latrines (female)	0
Access to handwashing facilities	N/A



Shelter and Non-Food Items (NFI)

Most common shelter types in the site⁵:	
1. Buul	
2. N/A	
3. N/A	
Electricity available in the site	No
Access to a NFI market	No
Average walking time to the nearest NFI market	N/A
Perceived safe access to NFI market	N/A



Displacement

Estimated number of households per displacement group:	
IDPs	130
Host community/ non-displaced	200
IDP households arrived in the past 3 months	50
Most common areas of origin:	
First area of origin	Bay
Second area of origin	Gedo
Third area of origin	Bakool



Food Security

Primary source of food	Borrowing
Food distributions	None
Access to a food market	No



Health and Nutrition

Most common health issue(s) reported in the site:	
1. AWD / Cholera	
2. Malaria	
3. N/A	
Access to healthcare services	No
Average walking time to the nearest health service	N/A
Women give birth in the site	Yes
Access to nutrition services	No
Average walking time to the nearest nutrition service	N/A
Access to nutrition services:	No



Education

Education services available	Yes
Average walking time to the nearest school	20 minutes
Education facilities available to residents in the site⁵:	
1. Other	
2. N/A	
3. N/A	



Communication

Three most trusted sources of information⁵:	
1. Community leader	
2. N/A	
3. N/A	
Most commonly spoken language	Somali Maay

4.More than 60 years old.

5.Key informants could select multiple responses.



Introduction

While an estimated 2.1 million people live in displacement sites in Somalia¹, existing information on exact locations and site level vulnerabilities is sparse, and existing assessments have been ad-hoc and unharmonised, resulting in low comparability and verification.

The Detailed Site Assessment (DSA) was triggered in coordination with the Camp Coordination and Camp Management (CCCM) Cluster in order to provide the humanitarian community with up-to-date information on location of internally displaced persons (IDP) sites, the conditions and capacity of the sites and the humanitarian needs of the residents.

Target locations for assessment were selected based on needs identified by the CCCM Cluster

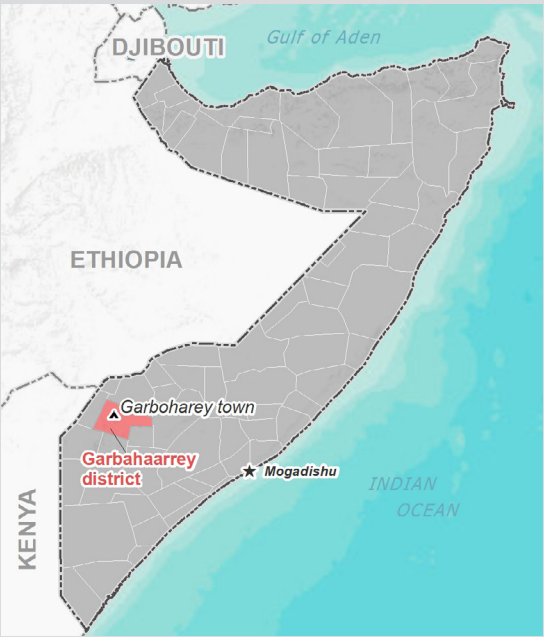
and accessibility for data collection.

A grid pattern approach² was applied during data collection to ensure that all IDP sites in the target area were identified. In each site, two key informant (KI) interviews were conducted: one with the site manager or community leader and one with a women's representative to ensure the perspectives of different groups were captured³. KI responses were aggregated to give one response per question per site.

This factsheet presents a summary of Busley Site profile along with the needs and priorities of IDPs residing in the site. As the data is captured through KIs, findings should be considered indicative only.

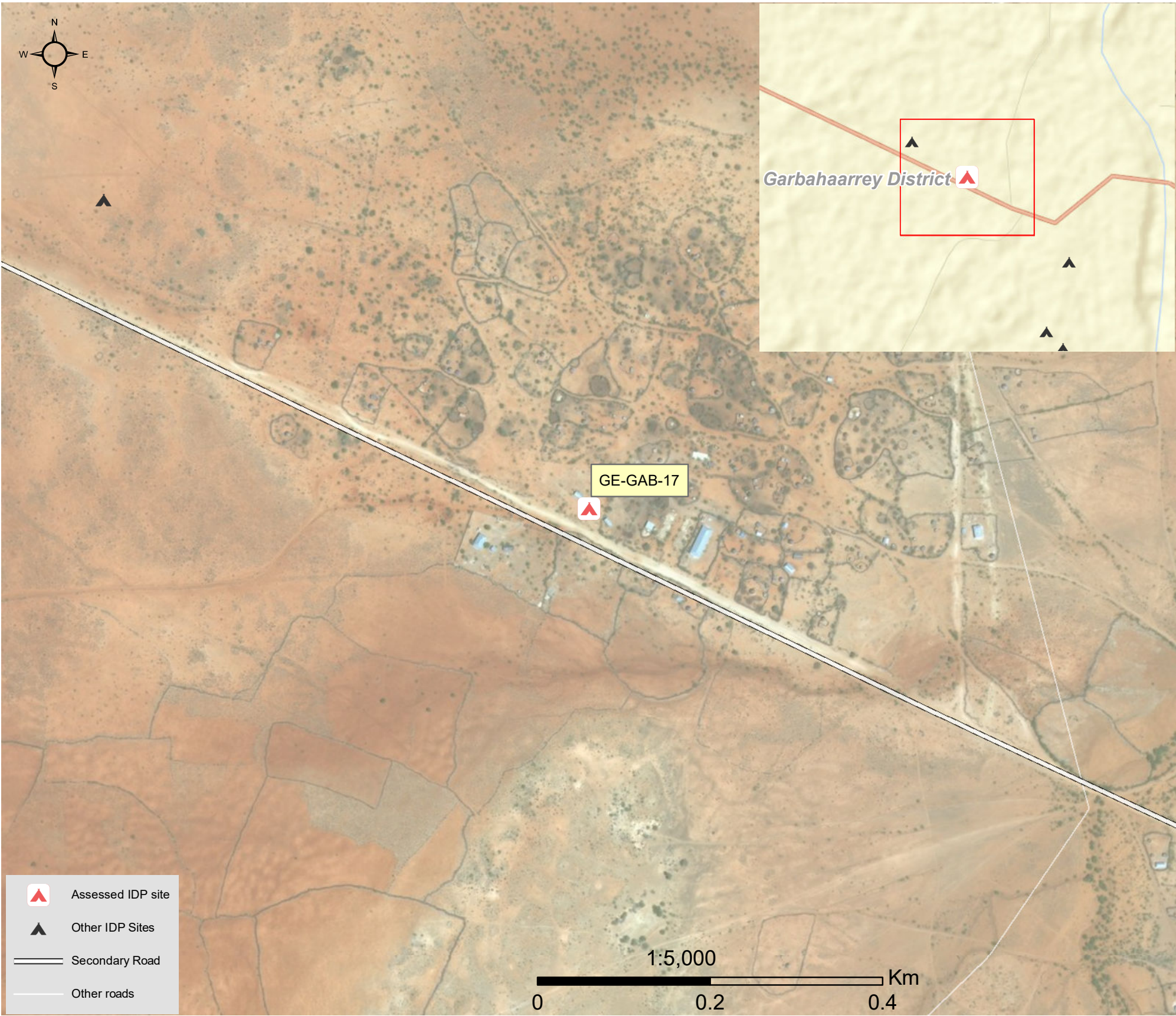
Date assessed: Jan - 2018

Location map



Assessed IDP sites in Garbahaarrey

Coordinates: Lat. 3.1739236, Long. 42.4849174



1.United Nations High Commissioner for Refugees (UNHCR): Protection & Return Monitoring Network (PRMN), September 2017

2.For each target location, the area was divided into 1km² grids. Enumerator teams then visited each grid to verify whether an IDP site was present. By visiting all grids, teams were able to determine the total number of sites in each location.

3.Where KI responses were significantly divergent, these were verified with the respective KIs with a higher reliability accorded to the response provided by the site manager or community leader.



Site Information

Settlement type	Spontaneous Site
Estimated number of individuals	1500
Estimated number of households	300
Site capacity reached	Yes
Responsible management agency	No Management
Date when most site residents arrived	Feb-16
Site owner	Private



Protection

Number of vulnerable households:	
Female-headed households	20
Child-headed households	3
Elderly individuals ⁴	300
Unaccompanied children	9
Individuals with a physical disability	19
Presence of shared community space	No
Presence of separate space for women/girls	No
Presence of child friendly space	No
Public lighting in the site	No
Type of landownership	None
Risk of eviction in next three months	No



WASH

Access to potable water	No
Number of latrines in the site:	
Latrines (mixed)	0
Latrines (male)	0
Latrines (female)	0
Access to handwashing facilities	N/A



Shelter and Non-Food Items (NFIs)

Most common shelter types in the site⁵:	
1. Buul	
2. N/A	
3. N/A	
Electricity available in the site	No
Access to a NFI market	No
Average walking time to the nearest NFI market	N/A
Perceived safe access to NFI market	N/A



Displacement

Estimated number of households per displacement group:	
IDPs	30
Host community/ non-displaced	200
IDP households arrived in the past 3 months	20
Most common areas of origin:	
First area of origin	Gedo
Second area of origin	Bay
Third area of origin	Bakool



Food Security

Primary source of food	Do Not Know
Food distributions	None
Access to a food market	No



Health and Nutrition

Most common health issue(s) reported in the site:	
1. AWD / Cholera	
2. Malaria	
3. Other	
Access to healthcare services	No
Average walking time to the nearest health service	N/A
Women give birth in the site	Yes
Access to nutrition services	No
Average walking time to the nearest nutrition service	N/A
Access to nutrition services:	No



Education

Education services available	No
Average walking time to the nearest school	N/A
Education facilities available to residents in the site⁵:	
1. N/A	
2. N/A	
3. N/A	



Communication

Three most trusted sources of information⁵:	
1. Friends/ family	
2. Radio	
3. N/A	
Most commonly spoken language	Somali Standard

4.More than 60 years old.

5.Key informants could select multiple responses.





Introduction

While an estimated 2.1 million people live in displacement sites in Somalia¹, existing information on exact locations and site level vulnerabilities is sparse, and existing assessments have been ad-hoc and unharmonised, resulting in low comparability and verification.

The Detailed Site Assessment (DSA) was triggered in coordination with the Camp Coordination and Camp Management (CCCM) Cluster in order to provide the humanitarian community with up-to-date information on location of internally displaced persons (IDP) sites, the conditions and capacity of the sites and the humanitarian needs of the residents.

Target locations for assessment were selected based on needs identified by the CCCM Cluster

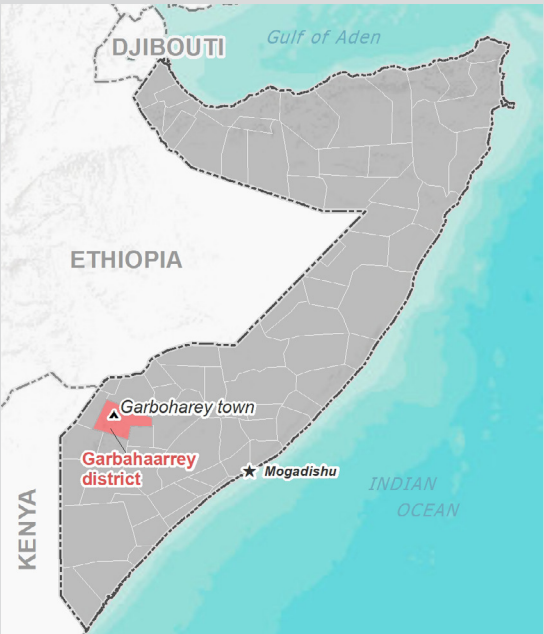
and accessibility for data collection.

A grid pattern approach² was applied during data collection to ensure that all IDP sites in the target area were identified. In each site, two key informant (KI) interviews were conducted: one with the site manager or community leader and one with a women's representative to ensure the perspectives of different groups were captured³. KI responses were aggregated to give one response per question per site.

This factsheet presents a summary of Hashinlow camp Site profile along with the needs and priorities of IDPs residing in the site. As the data is captured through KIs, findings should be considered indicative only.

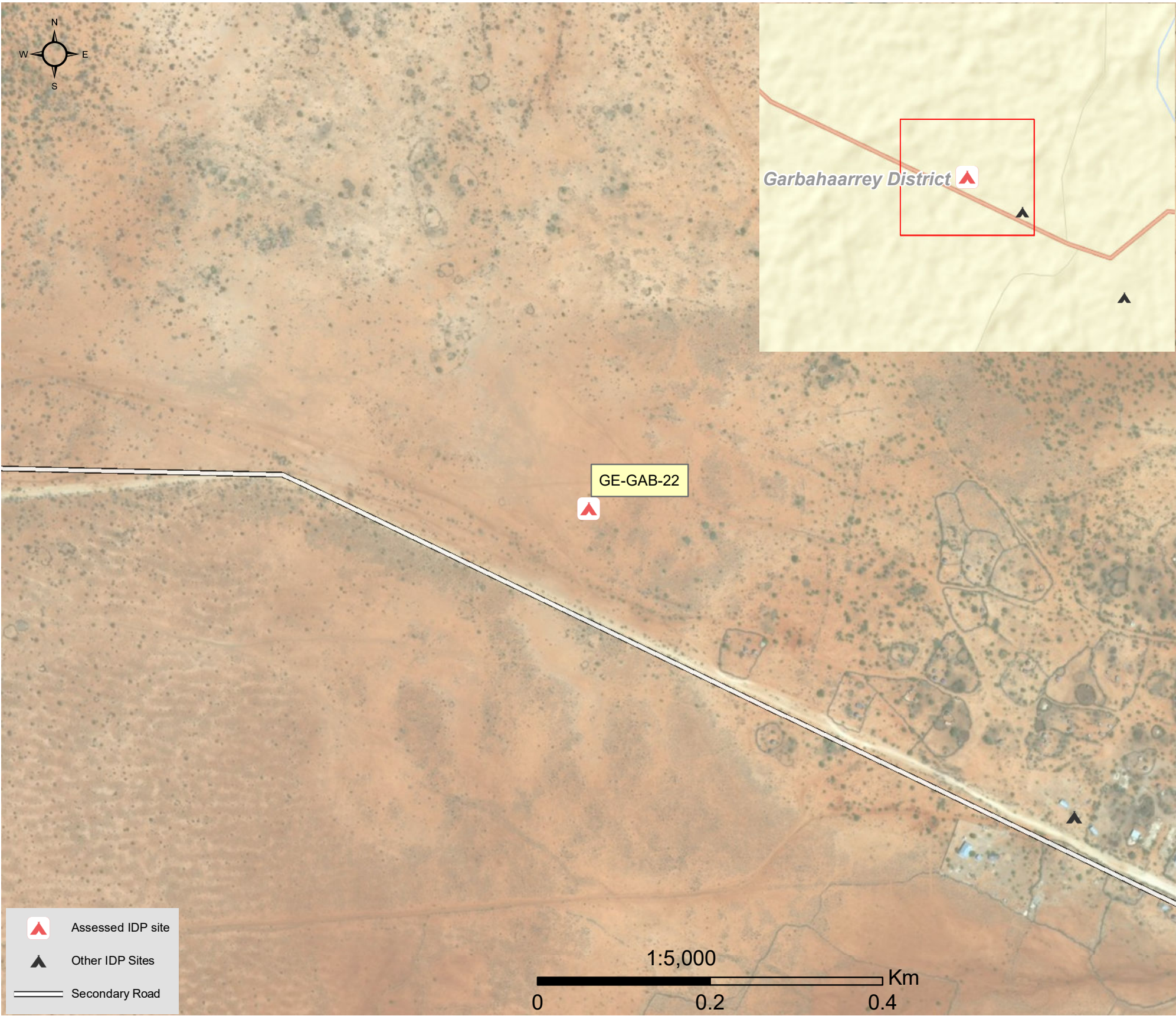
Date assessed: Jan - 2018

Location map



Assessed IDP sites in Garbahaarrey

Coordinates: Lat. 3.1771367, Long. 42.4798623



1.United Nations High Commissioner for Refugees (UNHCR): Protection & Return Monitoring Network (PRMN), September 2017

2.For each target location, the area was divided into 1km² grids. Enumerator teams then visited each grid to verify whether an IDP site was present. By visiting all grids, teams were able to determine the total number of sites in each location.

3.Where KI responses were significantly divergent, these were verified with the respective KIs with a higher reliability accorded to the response provided by the site manager or community leader.





Site Information

Settlement type	Spontaneous Site
Estimated number of individuals	1260
Estimated number of households	315
Site capacity reached	Yes
Responsible management agency	Residents
Date when most site residents arrived	May-16
Site owner	None



Protection

Number of vulnerable households:	
Female-headed households	40
Child-headed households	0
Elderly individuals ⁴	190
Unaccompanied children	12
Individuals with a physical disability	50
Presence of shared community space	No
Presence of separate space for women/girls	No
Presence of child friendly space	No
Public lighting in the site	No
Type of landownership	N/A
Risk of eviction in next three months	No



WASH

Access to potable water	No
Number of latrines in the site:	
Latrines (mixed)	0
Latrines (male)	0
Latrines (female)	0
Access to handwashing facilities	N/A



Shelter and Non-Food Items (NFI)

Most common shelter types in the site⁵:	
1. Buul	
2. N/A	
3. N/A	
Electricity available in the site	No
Access to a NFI market	No
Average walking time to the nearest NFI market	N/A
Perceived safe access to NFI market	N/A



Displacement

Estimated number of households per displacement group:	
IDPs	285
Host community/ non-displaced	15
IDP households arrived in the past 3 months	35
Most common areas of origin:	
First area of origin	Gedo
Second area of origin	Bay
Third area of origin	Bakool



Food Security

Primary source of food	Household
Food distributions	None
Access to a food market	No



Health and Nutrition

Most common health issue(s) reported in the site:	
1. AWD / Cholera	
2. Malaria	
3. N/A	
Access to healthcare services	No
Average walking time to the nearest health service	N/A
Women give birth in the site	Yes
Access to nutrition services	No
Average walking time to the nearest nutrition service	N/A
Access to nutrition services:	No



Education

Education services available	No
Average walking time to the nearest school	N/A
Education facilities available to residents in the site⁵:	
1. N/A	
2. N/A	
3. N/A	



Communication

Three most trusted sources of information⁵:	
1. Friends/ family	
2. Religious leader	
3. Community leader	
Most commonly spoken language	Somali Standard

4.More than 60 years old.

5.Key informants could select multiple responses.





Introduction

While an estimated 2.1 million people live in displacement sites in Somalia¹, existing information on exact locations and site level vulnerabilities is sparse, and existing assessments have been ad-hoc and unharmonised, resulting in low comparability and verification.

The Detailed Site Assessment (DSA) was triggered in coordination with the Camp Coordination and Camp Management (CCCM) Cluster in order to provide the humanitarian community with up-to-date information on location of internally displaced persons (IDP) sites, the conditions and capacity of the sites and the humanitarian needs of the residents.

Target locations for assessment were selected based on needs identified by the CCCM Cluster

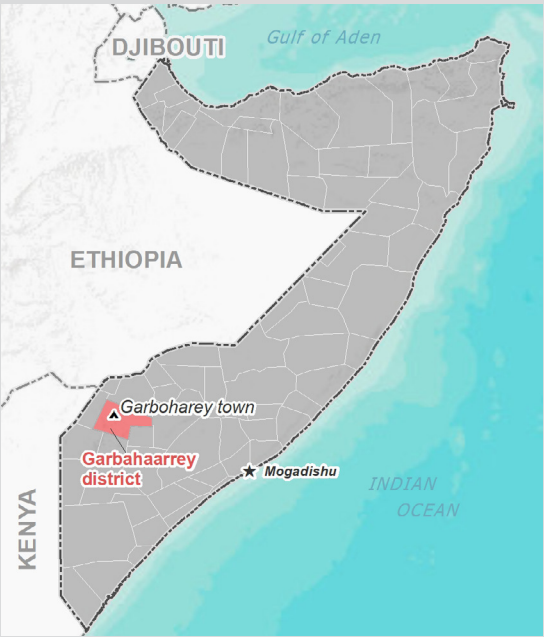
and accessibility for data collection.

A grid pattern approach² was applied during data collection to ensure that all IDP sites in the target area were identified. In each site, two key informant (KI) interviews were conducted: one with the site manager or community leader and one with a women's representative to ensure the perspectives of different groups were captured³. KI responses were aggregated to give one response per question per site.

This factsheet presents a summary of Xaluushin Site profile along with the needs and priorities of IDPs residing in the site. As the data is captured through KIs, findings should be considered indicative only.

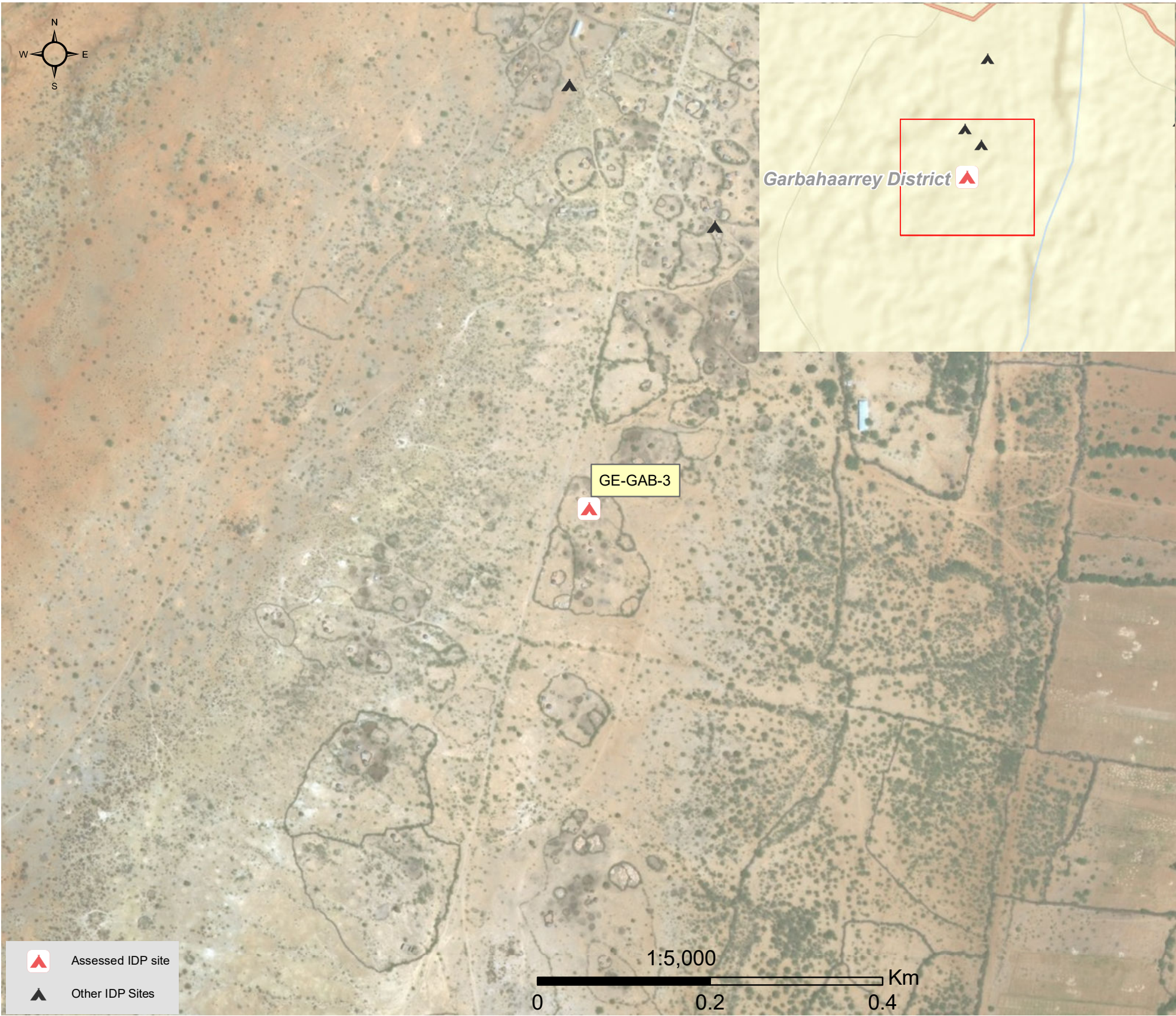
Date assessed: Jan - 2018

Location map



Assessed IDP sites in Garbahaarrey

Coordinates: Lat. 3.1553701, Long. 42.4923492



1.United Nations High Commissioner for Refugees (UNHCR): Protection & Return Monitoring Network (PRMN), September 2017

2.For each target location, the area was divided into 1km² grids. Enumerator teams then visited each grid to verify whether an IDP site was present. By visiting all grids, teams were able to determine the total number of sites in each location.

3.Where KI responses were significantly divergent, these were verified with the respective KIs with a higher reliability accorded to the response provided by the site manager or community leader.





Site Information

Settlement type	Spontaneous Site
Estimated number of individuals	1500
Estimated number of households	300
Site capacity reached	Yes
Responsible management agency	Local Authority
Date when most site residents arrived	Mar-16
Site owner	None



Protection

Number of vulnerable households:	
Female-headed households	210
Child-headed households	2
Elderly individuals ⁴	300
Unaccompanied children	10
Individuals with a physical disability	6
Presence of shared community space	No
Presence of separate space for women/girls	No
Presence of child friendly space	No
Public lighting in the site	No
Type of landownership	N/A
Risk of eviction in next three months	No



WASH

Access to potable water	No
Number of latrines in the site:	
Latrines (mixed)	0
Latrines (male)	0
Latrines (female)	0
Access to handwashing facilities	N/A



Shelter and Non-Food Items (NFIs)

Most common shelter types in the site⁵:	
1. Buul	
2. N/A	
3. N/A	
Electricity available in the site	No
Access to a NFI market	No
Average walking time to the nearest NFI market	N/A
Perceived safe access to NFI market	N/A



Displacement

Estimated number of households per displacement group:	
IDPs	260
Host community/ non-displaced	20
IDP households arrived in the past 3 months	50
Most common areas of origin:	
First area of origin	Gedo
Second area of origin	Bay
Third area of origin	Bakool



Food Security

Primary source of food	Household
Food distributions	None
Access to a food market	Yes



Health and Nutrition

Most common health issue(s) reported in the site:	
1. AWD / Cholera	
2. Malaria	
3. N/A	
Access to healthcare services	No
Average walking time to the nearest health service	N/A
Women give birth in the site	Yes
Access to nutrition services	No
Average walking time to the nearest nutrition service	N/A
Access to nutrition services:	No



Education

Education services available	No
Average walking time to the nearest school	N/A
Education facilities available to residents in the site⁵:	
1. N/A	
2. N/A	
3. N/A	



Communication

Three most trusted sources of information⁵:	
1. Radio	
2. N/A	
3. N/A	
Most commonly spoken language	Somali Standard

4.More than 60 years old.

5.Key informants could select multiple responses.





Introduction

While an estimated 2.1 million people live in displacement sites in Somalia¹, existing information on exact locations and site level vulnerabilities is sparse, and existing assessments have been ad-hoc and unharmonised, resulting in low comparability and verification.

The Detailed Site Assessment (DSA) was triggered in coordination with the Camp Coordination and Camp Management (CCCM) Cluster in order to provide the humanitarian community with up-to-date information on location of internally displaced persons (IDP) sites, the conditions and capacity of the sites and the humanitarian needs of the residents.

Target locations for assessment were selected based on needs identified by the CCCM Cluster

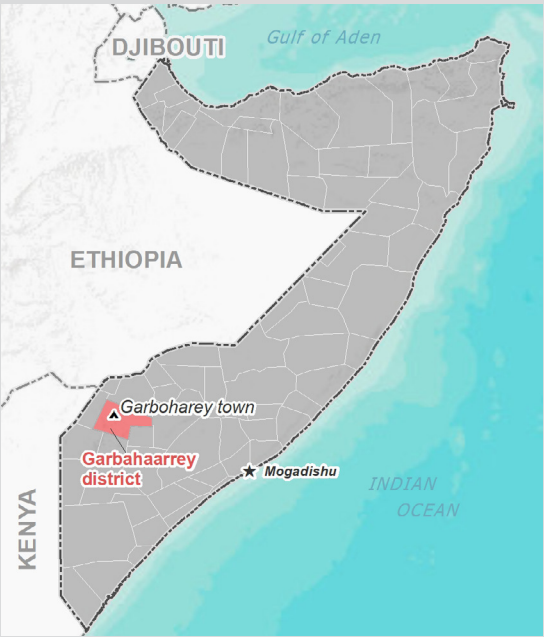
and accessibility for data collection.

A grid pattern approach² was applied during data collection to ensure that all IDP sites in the target area were identified. In each site, two key informant (KI) interviews were conducted: one with the site manager or community leader and one with a women's representative to ensure the perspectives of different groups were captured³. KI responses were aggregated to give one response per question per site.

This factsheet presents a summary of Qoryaale Site profile along with the needs and priorities of IDPs residing in the site. As the data is captured through KIs, findings should be considered indicative only.

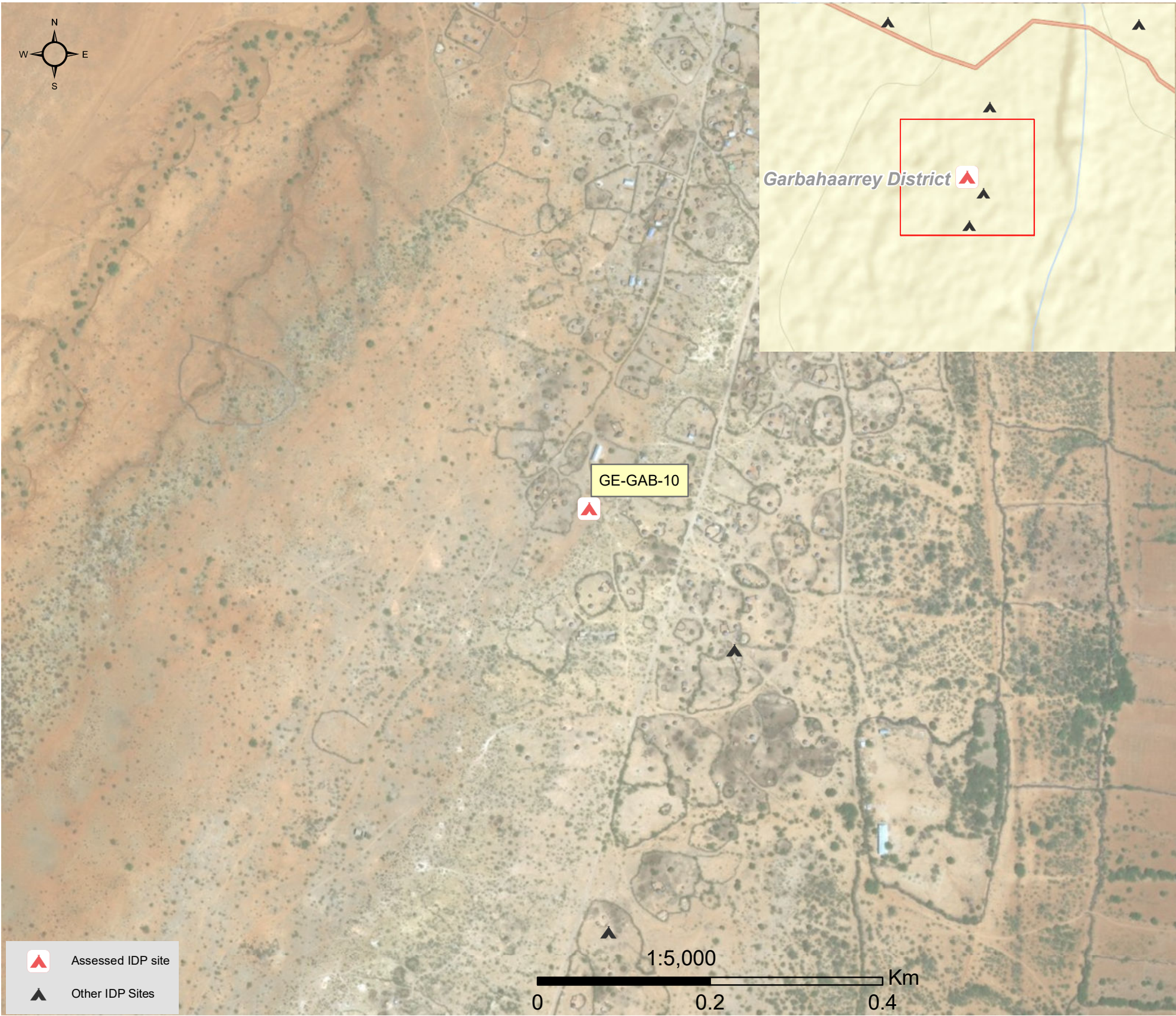
Date assessed: Jan - 2018

Location map



Assessed IDP sites in Garbahaarrey

Coordinates: Lat. 3.1597845, Long. 42.4921436



1.United Nations High Commissioner for Refugees (UNHCR): Protection & Return Monitoring Network (PRMN), September 2017

2.For each target location, the area was divided into 1km² grids. Enumerator teams then visited each grid to verify whether an IDP site was present. By visiting all grids, teams were able to determine the total number of sites in each location.

3.Where KI responses were significantly divergent, these were verified with the respective KIs with a higher reliability accorded to the response provided by the site manager or community leader.





Site Information

Settlement type	Spontaneous Site
Estimated number of individuals	1250
Estimated number of households	250
Site capacity reached	Yes
Responsible management agency	No Management
Date when most site residents arrived	Jan-16
Site owner	None



Protection

Number of vulnerable households:	
Female-headed households	30
Child-headed households	10
Elderly individuals ⁴	250
Unaccompanied children	20
Individuals with a physical disability	10
Presence of shared community space	No
Presence of separate space for women/girls	No
Presence of child friendly space	No
Public lighting in the site	No
Type of landownership	N/A
Risk of eviction in next three months	No



WASH

Access to potable water	No
Number of latrines in the site:	
Latrines (mixed)	0
Latrines (male)	0
Latrines (female)	0
Access to handwashing facilities	N/A



Shelter and Non-Food Items (NFIs)

Most common shelter types in the site⁵:	
1. Buul	
2. N/A	
3. N/A	
Electricity available in the site	No
Access to a NFI market	No
Average walking time to the nearest NFI market	N/A
Perceived safe access to NFI market	N/A



Displacement

Estimated number of households per displacement group:	
IDPs	25
Host community/ non-displaced	150
IDP households arrived in the past 3 months	30
Most common areas of origin:	
First area of origin	Gedo
Second area of origin	Bay
Third area of origin	Bakool



Food Security

Primary source of food	Borrowing
Food distributions	None
Access to a food market	No



Health and Nutrition

Most common health issue(s) reported in the site:	
1. AWD / Cholera	
2. Malaria	
3. N/A	
Access to healthcare services	No
Average walking time to the nearest health service	N/A
Women give birth in the site	Yes
Access to nutrition services	No
Average walking time to the nearest nutrition service	N/A
Access to nutrition services:	No



Education

Education services available	No
Average walking time to the nearest school	N/A
Education facilities available to residents in the site⁵:	
1. N/A	
2. N/A	
3. N/A	



Communication

Three most trusted sources of information⁵:	
1. Friends/ family	
2. Radio	
3. N/A	
Most commonly spoken language	Somali Standard

4.More than 60 years old.

5.Key informants could select multiple responses.



Introduction

While an estimated 2.1 million people live in displacement sites in Somalia¹, existing information on exact locations and site level vulnerabilities is sparse, and existing assessments have been ad-hoc and unharmonised, resulting in low comparability and verification.

The Detailed Site Assessment (DSA) was triggered in coordination with the Camp Coordination and Camp Management (CCCM) Cluster in order to provide the humanitarian community with up-to-date information on location of internally displaced persons (IDP) sites, the conditions and capacity of the sites and the humanitarian needs of the residents.

Target locations for assessment were selected based on needs identified by the CCCM Cluster

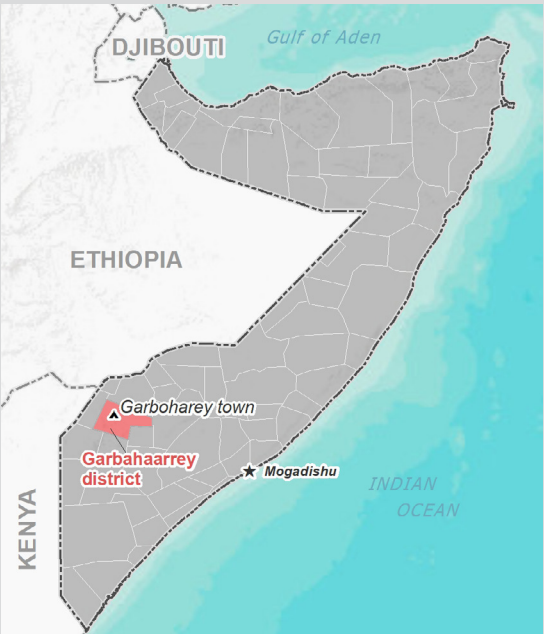
and accessibility for data collection.

A grid pattern approach² was applied during data collection to ensure that all IDP sites in the target area were identified. In each site, two key informant (KI) interviews were conducted: one with the site manager or community leader and one with a women's representative to ensure the perspectives of different groups were captured³. KI responses were aggregated to give one response per question per site.

This factsheet presents a summary of Kormari Site profile along with the needs and priorities of IDPs residing in the site. As the data is captured through KIs, findings should be considered indicative only.

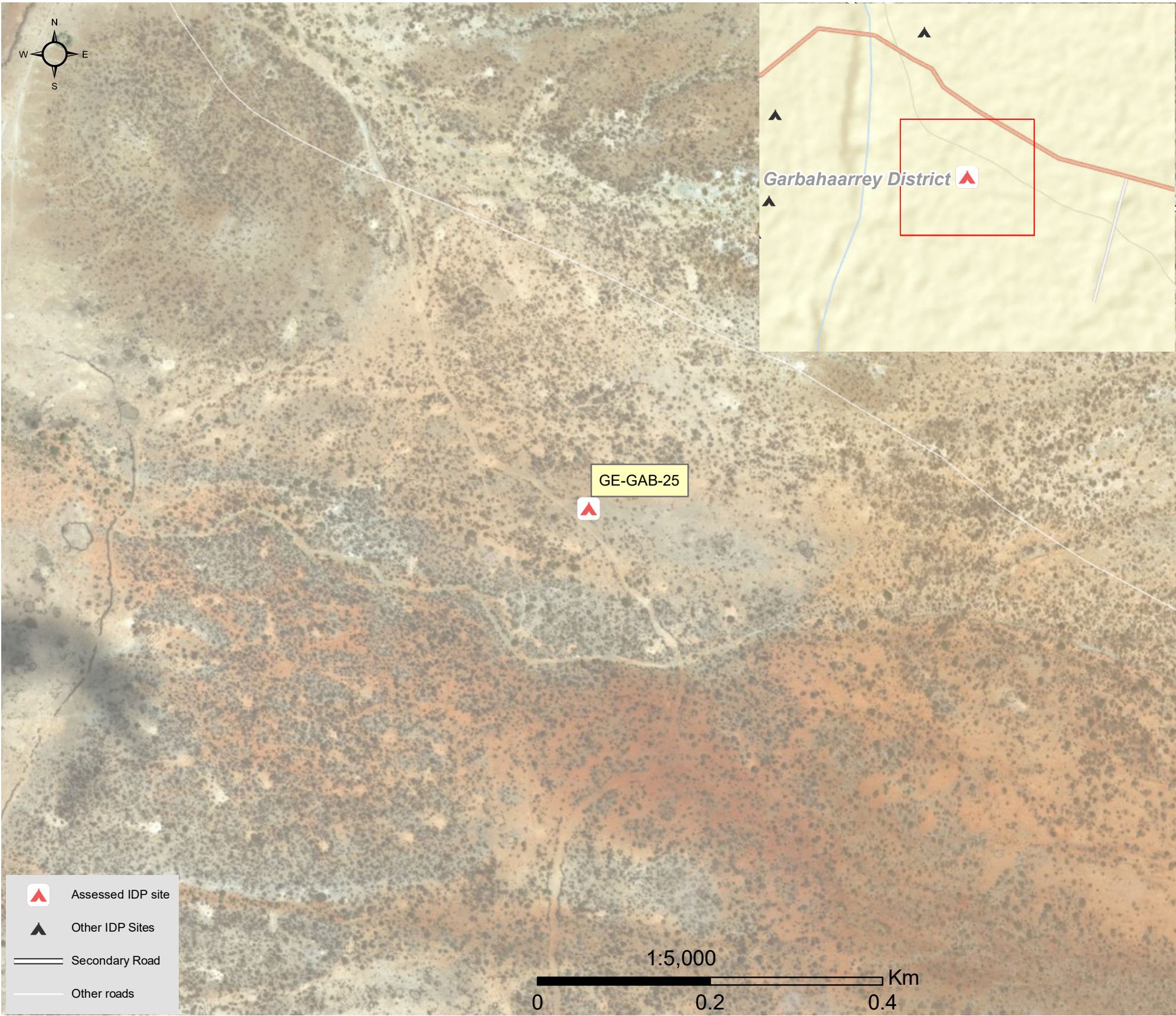
Date assessed: Jan - 2018

Location map



Assessed IDP sites in Garbahaarrey

Coordinates: Lat. 3.1604805, Long. 42.5117304



1.United Nations High Commissioner for Refugees (UNHCR): Protection & Return Monitoring Network (PRMN), September 2017

2.For each target location, the area was divided into 1km² grids. Enumerator teams then visited each grid to verify whether an IDP site was present. By visiting all grids, teams were able to determine the total number of sites in each location.

3.Where KI responses were significantly divergent, these were verified with the respective KIs with a higher reliability accorded to the response provided by the site manager or community leader.



Site Information

Settlement type	Spontaneous Site
Estimated number of individuals	1250
Estimated number of households	250
Site capacity reached	Yes
Responsible management agency	No Management
Date when most site residents arrived	Feb-16
Site owner	None



Protection

Number of vulnerable households:	
Female-headed households	15
Child-headed households	5
Elderly individuals ⁴	250
Unaccompanied children	10
Individuals with a physical disability	15
Presence of shared community space	No
Presence of separate space for women/girls	No
Presence of child friendly space	No
Public lighting in the site	No
Type of landownership	N/A
Risk of eviction in next three months	No



WASH

Access to potable water	No
Number of latrines in the site:	
Latrines (mixed)	0
Latrines (male)	0
Latrines (female)	0
Access to handwashing facilities	N/A



Shelter and Non-Food Items (NFIs)

Most common shelter types in the site⁵:	
1. Buul	
2. N/A	
3. N/A	
Electricity available in the site	No
Access to a NFI market	No
Average walking time to the nearest NFI market	N/A
Perceived safe access to NFI market	N/A



Displacement

Estimated number of households per displacement group:	
IDPs	25
Host community/ non-displaced	150
IDP households arrived in the past 3 months	30
Most common areas of origin:	
First area of origin	Gedo
Second area of origin	Bay
Third area of origin	N/A



Food Security

Primary source of food	Do Not Know
Food distributions	None
Access to a food market	No



Health and Nutrition

Most common health issue(s) reported in the site:	
1. AWD / Cholera	
2. Malaria	
3. N/A	
Access to healthcare services	No
Average walking time to the nearest health service	N/A
Women give birth in the site	Yes
Access to nutrition services	No
Average walking time to the nearest nutrition service	N/A
Access to nutrition services:	No



Education

Education services available	Yes
Average walking time to the nearest school	30 minutes
Education facilities available to residents in the site⁵:	
1. Quranic	
2. N/A	
3. N/A	



Communication

Three most trusted sources of information⁵:	
1. Friends/ family	
2. N/A	
3. N/A	
Most commonly spoken language	Somali Standard

4.More than 60 years old.

5.Key informants could select multiple responses.





Introduction

While an estimated 2.1 million people live in displacement sites in Somalia¹, existing information on exact locations and site level vulnerabilities is sparse, and existing assessments have been ad-hoc and unharmonised, resulting in low comparability and verification.

The Detailed Site Assessment (DSA) was triggered in coordination with the Camp Coordination and Camp Management (CCCM) Cluster in order to provide the humanitarian community with up-to-date information on location of internally displaced persons (IDP) sites, the conditions and capacity of the sites and the humanitarian needs of the residents.

Target locations for assessment were selected based on needs identified by the CCCM Cluster

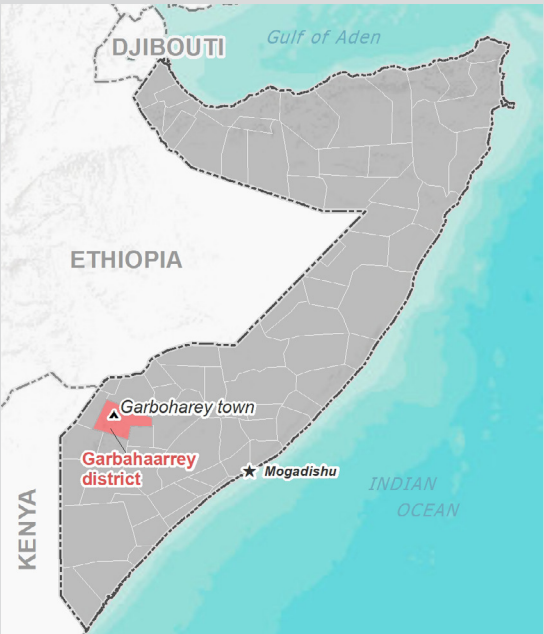
and accessibility for data collection.

A grid pattern approach² was applied during data collection to ensure that all IDP sites in the target area were identified. In each site, two key informant (KI) interviews were conducted: one with the site manager or community leader and one with a women's representative to ensure the perspectives of different groups were captured³. KI responses were aggregated to give one response per question per site.

This factsheet presents a summary of Farhareeri Site profile along with the needs and priorities of IDPs residing in the site. As the data is captured through KIs, findings should be considered indicative only.

Date assessed: Jan - 2018

Location map



Assessed IDP sites in Garbahaarrey

Coordinates: Lat. 3.166155, Long. 42.4942219



1.United Nations High Commissioner for Refugees (UNHCR): Protection & Return Monitoring Network (PRMN), September 2017

2.For each target location, the area was divided into 1km² grids. Enumerator teams then visited each grid to verify whether an IDP site was present. By visiting all grids, teams were able to determine the total number of sites in each location.

3.Where KI responses were significantly divergent, these were verified with the respective KIs with a higher reliability accorded to the response provided by the site manager or community leader.





Site Information

Settlement type	Spontaneous Site
Estimated number of individuals	2400
Estimated number of households	480
Site capacity reached	Yes
Responsible management agency	No Management
Date when most site residents arrived	Mar-17
Site owner	None



Protection

Number of vulnerable households:	
Female-headed households	300
Child-headed households	4
Elderly individuals ⁴	480
Unaccompanied children	5
Individuals with a physical disability	6
Presence of shared community space	No
Presence of separate space for women/girls	No
Presence of child friendly space	No
Public lighting in the site	No
Type of landownership	N/A
Risk of eviction in next three months	No



WASH

Access to potable water	No
Number of latrines in the site:	
Latrines (mixed)	0
Latrines (male)	0
Latrines (female)	0
Access to handwashing facilities	N/A



Shelter and Non-Food Items (NFIs)

Most common shelter types in the site⁵:	
1. Buul	
2. N/A	
3. N/A	
Electricity available in the site	No
Access to a NFI market	No
Average walking time to the nearest NFI market	N/A
Perceived safe access to NFI market	N/A



Displacement

Estimated number of households per displacement group:	
IDPs	460
Host community/ non-displaced	10
IDP households arrived in the past 3 months	60
Most common areas of origin:	
First area of origin	Gedo
Second area of origin	Bay
Third area of origin	Bakool



Food Security

Primary source of food	Household
Food distributions	None
Access to a food market	Yes



Health and Nutrition

Most common health issue(s) reported in the site:	
1. AWD / Cholera	
2. Malaria	
3. N/A	
Access to healthcare services	No
Average walking time to the nearest health service	N/A
Women give birth in the site	Yes
Access to nutrition services	No
Average walking time to the nearest nutrition service	N/A
Access to nutrition services:	No



Education

Education services available	No
Average walking time to the nearest school	N/A
Education facilities available to residents in the site⁵:	
1. N/A	
2. N/A	
3. N/A	



Communication

Three most trusted sources of information⁵:	
1. Radio	
2. N/A	
3. N/A	
Most commonly spoken language	Somali Standard

4.More than 60 years old.

5.Key informants could select multiple responses.



Introduction

While an estimated 2.1 million people live in displacement sites in Somalia¹, existing information on exact locations and site level vulnerabilities is sparse, and existing assessments have been ad-hoc and unharmonised, resulting in low comparability and verification.

The Detailed Site Assessment (DSA) was triggered in coordination with the Camp Coordination and Camp Management (CCCM) Cluster in order to provide the humanitarian community with up-to-date information on location of internally displaced persons (IDP) sites, the conditions and capacity of the sites and the humanitarian needs of the residents.

Target locations for assessment were selected based on needs identified by the CCCM Cluster

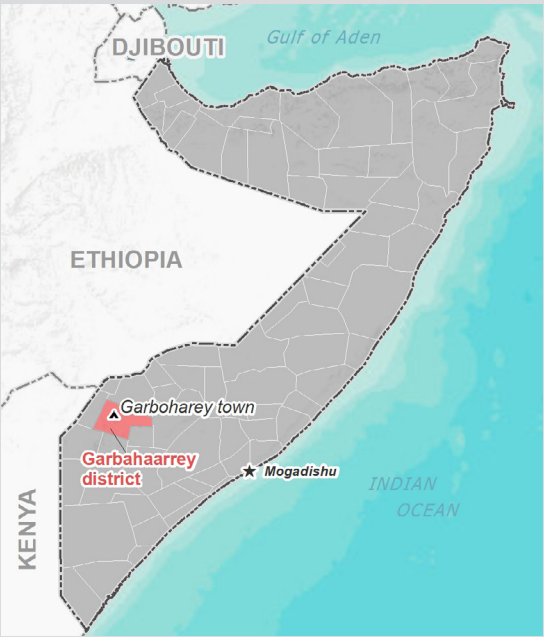
and accessibility for data collection.

A grid pattern approach² was applied during data collection to ensure that all IDP sites in the target area were identified. In each site, two key informant (KI) interviews were conducted: one with the site manager or community leader and one with a women's representative to ensure the perspectives of different groups were captured³. KI responses were aggregated to give one response per question per site.

This factsheet presents a summary of Jiic Site profile along with the needs and priorities of IDPs residing in the site. As the data is captured through KIs, findings should be considered indicative only.

Date assessed: Jan - 2018

Location map



Assessed IDP sites in Garbahaarrey

Coordinates: Lat. 3.1583091, Long. 42.4936592



1.United Nations High Commissioner for Refugees (UNHCR): Protection & Return Monitoring Network (PRMN), September 2017

2.For each target location, the area was divided into 1km² grids. Enumerator teams then visited each grid to verify whether an IDP site was present. By visiting all grids, teams were able to determine the total number of sites in each location.

3.Where KI responses were significantly divergent, these were verified with the respective KIs with a higher reliability accorded to the response provided by the site manager or community leader.



Site Information

Settlement type	Spontaneous Site
Estimated number of individuals	2600
Estimated number of households	520
Site capacity reached	Yes
Responsible management agency	No Management
Date when most site residents arrived	Apr-16
Site owner	None



Protection

Number of vulnerable households:	
Female-headed households	50
Child-headed households	8
Elderly individuals ⁴	560
Unaccompanied children	13
Individuals with a physical disability	12
Presence of shared community space	No
Presence of separate space for women/girls	No
Presence of child friendly space	No
Public lighting in the site	No
Type of landownership	N/A
Risk of eviction in next three months	No



WASH

Access to potable water	No
Number of latrines in the site:	
Latrines (mixed)	0
Latrines (male)	0
Latrines (female)	0
Access to handwashing facilities	N/A



Shelter and Non-Food Items (NFIs)

Most common shelter types in the site⁵:	
1. Buul	
2. N/A	
3. N/A	
Electricity available in the site	No
Access to a NFI market	Yes
Average walking time to the nearest NFI market	40 minutes
Perceived safe access to NFI market	Yes



Displacement

Estimated number of households per displacement group:	
IDPs	50
Host community/ non-displaced	320
IDP households arrived in the past 3 months	60
Most common areas of origin:	
First area of origin	Gedo
Second area of origin	Bay
Third area of origin	N/A



Food Security

Primary source of food	Do Not Know
Food distributions	None
Access to a food market	Yes



Health and Nutrition

Most common health issue(s) reported in the site:	
1. AWD / Cholera	
2. Malaria	
3. Other	
Access to healthcare services	No
Average walking time to the nearest health service	N/A
Women give birth in the site	Yes
Access to nutrition services	No
Average walking time to the nearest nutrition service	N/A
Access to nutrition services:	No



Education

Education services available	Yes
Average walking time to the nearest school	30 minutes
Education facilities available to residents in the site⁵:	
1. Quranic	
2. N/A	
3. N/A	



Communication

Three most trusted sources of information⁵:	
1. Friends/ family	
2. Radio	
3. N/A	
Most commonly spoken language	Somali Standard

4.More than 60 years old.

5.Key informants could select multiple responses.

