



Introduction

While an estimated 2.1 million people live in displacement sites in Somalia¹, existing information on exact locations and site level vulnerabilities is sparse, and existing assessments have been ad-hoc and unharmonised, resulting in low comparability and verification.

The Detailed Site Assessment (DSA) was triggered in coordination with the Camp Coordination and Camp Management (CCCM) Cluster in order to provide the humanitarian community with up-to-date information on location of internally displaced persons (IDP) sites, the conditions and capacity of the sites and the humanitarian needs of the residents.

Target locations for assessment were selected based on needs identified by the CCCM Cluster

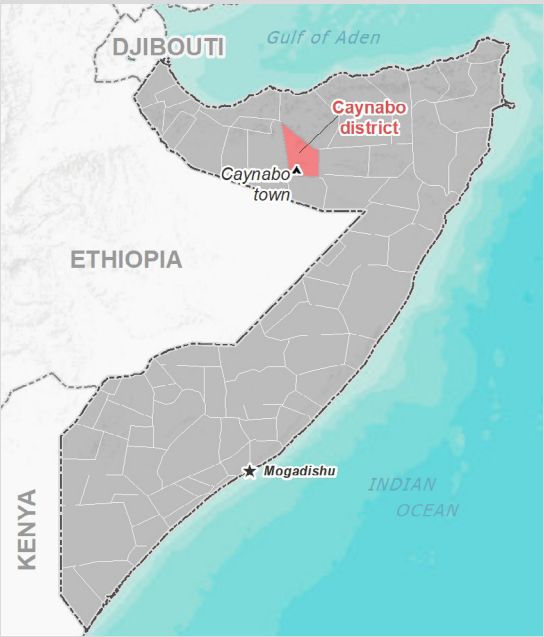
and accessibility for data collection.

A grid pattern approach² was applied during data collection to ensure that all IDP sites in the target area were identified. In each site, two key informant (KI) interviews were conducted: one with the site manager or community leader and one with a women's representative to ensure the perspectives of different groups were captured³. KI responses were aggregated to give one response per question per site.

This factsheet presents a summary of Ainabo Camp One Site profile along with the needs and priorities of IDPs residing in the site. As the data is captured through KIs, findings should be considered indicative only.

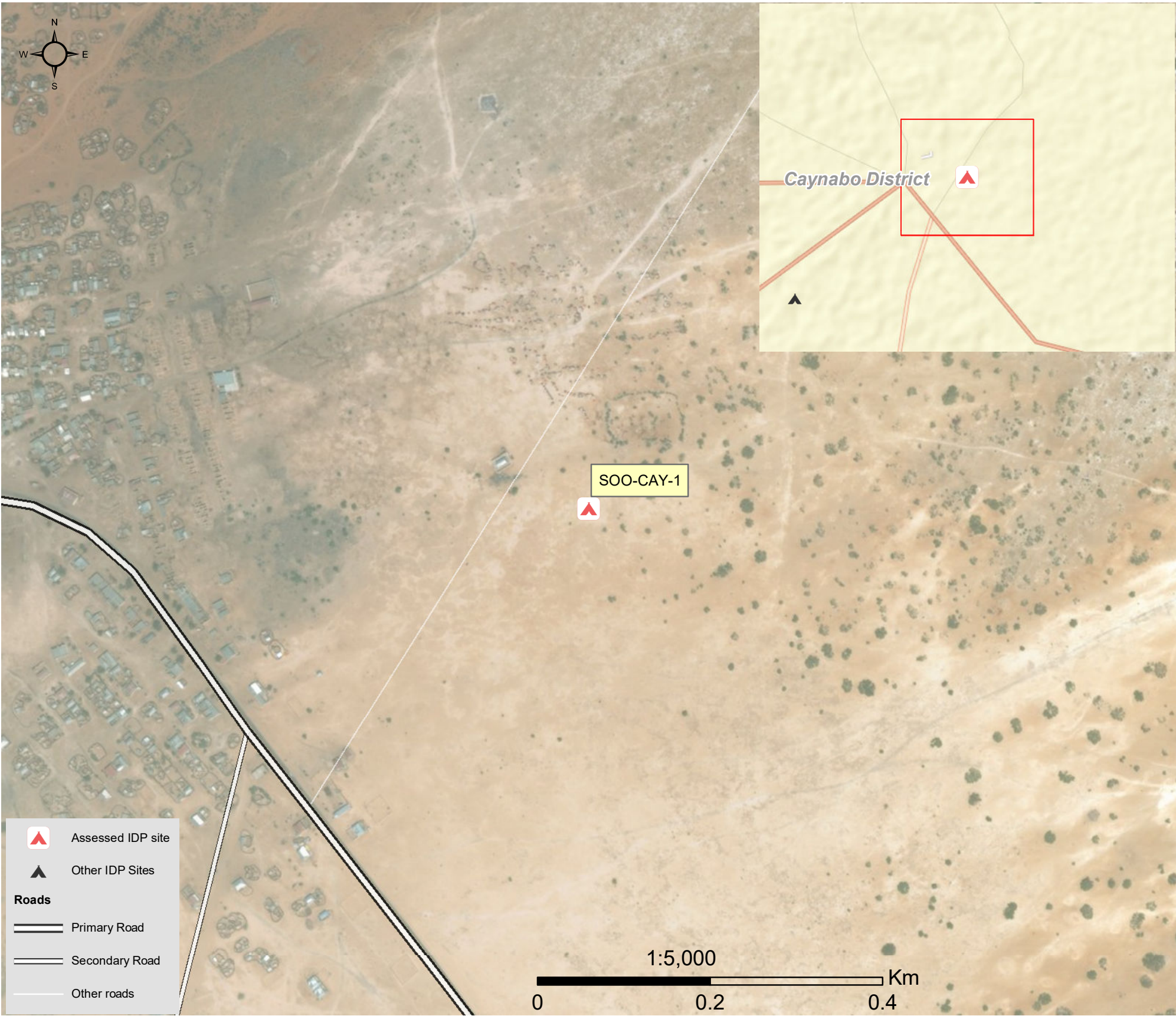
Date assessed: **Feb - 2018**

Location map



Assessed IDP sites in Caynabo

Coordinates: Lat. 8.956, Long. 46.416



1.United Nations High Commissioner for Refugees (UNHCR): Protection & Return Monitoring Network (PRMN), September 2017

2.For each target location, the area was divided into 1km² grids. Enumerator teams then visited each grid to verify whether an IDP site was present. By visiting all grids, teams were able to determine the total number of sites in each location.

3.Where KI responses were significantly divergent, these were verified with the respective KIs with a higher reliability accorded to the response provided by the site manager or community leader.





Site Information

Settlement type	Spontaneous site
Estimated number of individuals	12240
Estimated number of households	2040
Site capacity reached	No
Responsible management agency	Local authority
Date when most site residents arrived	Nov - 2017
Site owner	Local authority



Protection

Number of vulnerable households:	
Female-headed households	100
Child-headed households	0
Elderly individuals ⁴	1020
Unaccompanied children	3
Individuals with a physical disability	20
Presence of shared community space	Yes
Presence of separate space for women/girls	No
Presence of child friendly space	No
Public lighting in the site	No
Type of landownership	Informal
Risk of eviction in next three months	No



WASH

Access to potable water	No
Number of latrines in the site:	
Latrines (mixed)	40
Latrines (male)	0
Latrines (female)	0
Access to handwashing facilities	No



Shelter and Non-Food Items (NFI)

Most common shelter types in the site⁵:	
1. Buul	
2. Tent	
3. Timber and plastic sheet	
Electricity available in the site	No
Access to a NFI market	Yes
Average walking time to the nearest NFI market	20 minutes
Perceived safe access to NFI market	Yes



Displacement

Estimated number of households per displacement group:	
IDPs	2040
Host community/ non-displaced	0
IDP households arrived in the past 3 months	400
Most common areas of origin:	
First area of origin	Sool
Second area of origin	Sanaag
Third area of origin	Togdheer



Food Security

Primary source of food	Food assistance
Food distributions	Less than montly
Access to a food market	Yes



Health and Nutrition

Most common health issue(s) reported in the site:	
1. None	
2. N/A	
3. N/A	
Access to healthcare services	Yes
Average walking time to the nearest health service	15 minutes
Women give birth in the site	No
Access to nutrition services	Yes
Average walking time to the nearest nutrition service	40 minutes
Access to nutrition services:	Yes



Education

Education services available	No
Average walking time to the nearest school	N/A
Education facilities available to residents in the site⁵:	
1. N/A	
2. N/A	
3. N/A	



Communication

Three most trusted sources of information⁵:	
1. TV	
2. Government official	
3. Radio	
Most commonly spoken language	Somali Standard

4.More than 60 years old.

5.Key informants could select multiple responses.



Introduction

While an estimated 2.1 million people live in displacement sites in Somalia¹, existing information on exact locations and site level vulnerabilities is sparse, and existing assessments have been ad-hoc and unharmonised, resulting in low comparability and verification.

The Detailed Site Assessment (DSA) was triggered in coordination with the Camp Coordination and Camp Management (CCCM) Cluster in order to provide the humanitarian community with up-to-date information on location of internally displaced persons (IDP) sites, the conditions and capacity of the sites and the humanitarian needs of the residents.

Target locations for assessment were selected based on needs identified by the CCCM Cluster

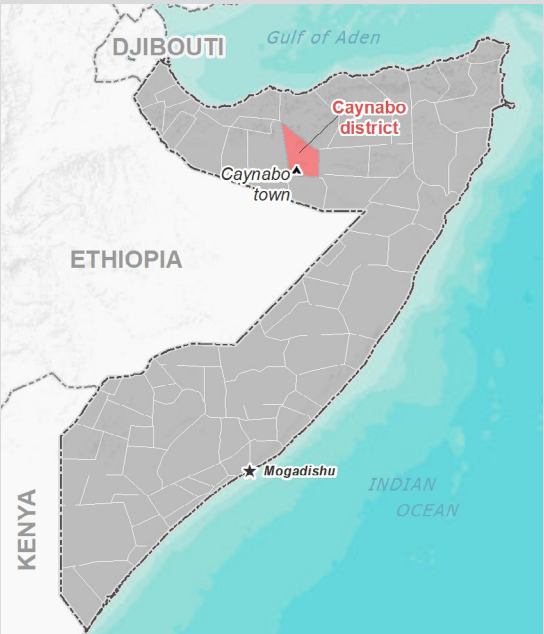
and accessibility for data collection.

A grid pattern approach² was applied during data collection to ensure that all IDP sites in the target area were identified. In each site, two key informant (KI) interviews were conducted: one with the site manager or community leader and one with a women's representative to ensure the perspectives of different groups were captured³. KI responses were aggregated to give one response per question per site.

This factsheet presents a summary of Ainabo Camp two Site profile along with the needs and priorities of IDPs residing in the site. As the data is captured through KIs, findings should be considered indicative only.

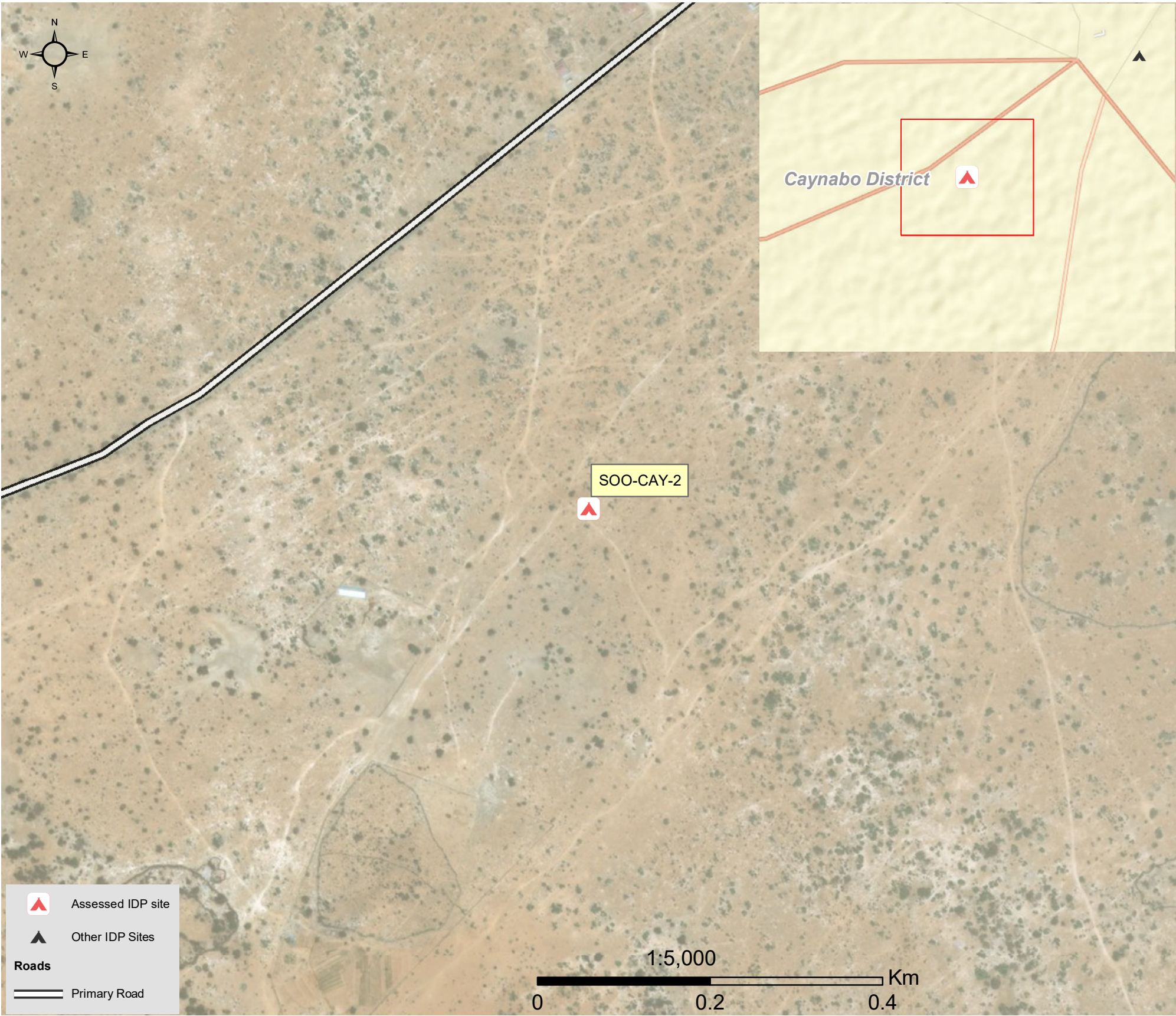
Date assessed: **Feb - 2018**

Location map



Assessed IDP sites in Caynabo

Coordinates: Lat. 8.9451253, Long. 46.4003963



1.United Nations High Commissioner for Refugees (UNHCR): Protection & Return Monitoring Network (PRMN), September 2017

2.For each target location, the area was divided into 1km² grids. Enumerator teams then visited each grid to verify whether an IDP site was present. By visiting all grids, teams were able to determine the total number of sites in each location.

3.Where KI responses were significantly divergent, these were verified with the respective KIs with a higher reliability accorded to the response provided by the site manager or community leader.



Site Information

Settlement type	Spontaneous Site
Estimated number of individuals	4500
Estimated number of households	990
Site capacity reached	No
Responsible management agency	Local Authority
Date when most site residents arrived	May - 2017
Site owner	Private



Protection

Number of vulnerable households:

Female-headed households	200
Child-headed households	5
Elderly individuals ⁴	230
Unaccompanied children	15
Individuals with a physical disability	35
Presence of shared community space	No
Presence of separate space for women/girls	No
Presence of child friendly space	No
Public lighting in the site	No
Type of landownership	Formal
Risk of eviction in next three months	No



WASH

Access to potable water	Yes
Number of latrines in the site:	
Latrines (mixed)	40
Latrines (male)	30
Latrines (female)	0
Access to handwashing facilities	no



Shelter and Non-Food Items (NFI)

Most common shelter types in the site⁵:

1. Buul	
2. Tent	
3. Plastic	
Electricity available in the site	No
Access to a NFI market	Yes
Average walking time to the nearest NFI market	40 minutes
Perceived safe access to NFI market	Yes



Displacement

Estimated number of households per displacement group:

IDPs	990
Host community/ non-displaced	0
IDP households arrived in the past 3 months	100

Most common areas of origin:

First area of origin	Sool
Second area of origin	Togdheer
Third area of origin	Saag



Food Security

Primary source of food	Assistance
Food distributions	In-kind
Access to a food market	Yes



Health and Nutrition

Most common health issue(s) reported in the site:

1. Other
2. N/A
3. N/A

Access to healthcare services	Yes
Average walking time to the nearest health service	20 minutes
Women give birth in the site	No
Access to nutrition services	Yes
Average walking time to the nearest nutrition service	30 minutes

Access to nutrition services: Yes



Education

Education services available	No
Average walking time to the nearest school	N/A

Education facilities available to residents in the site⁵:

1. N/A
2. N/A
3. N/A



Communication

Three most trusted sources of information⁵:

1. Friends/ family
2. TV
3. Radio

Most commonly spoken language	Somali Standard
-------------------------------	-----------------

4.More than 60 years old.

5.Key informants could select multiple responses.