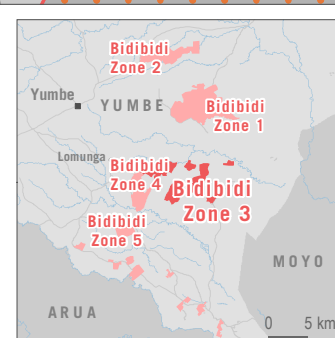
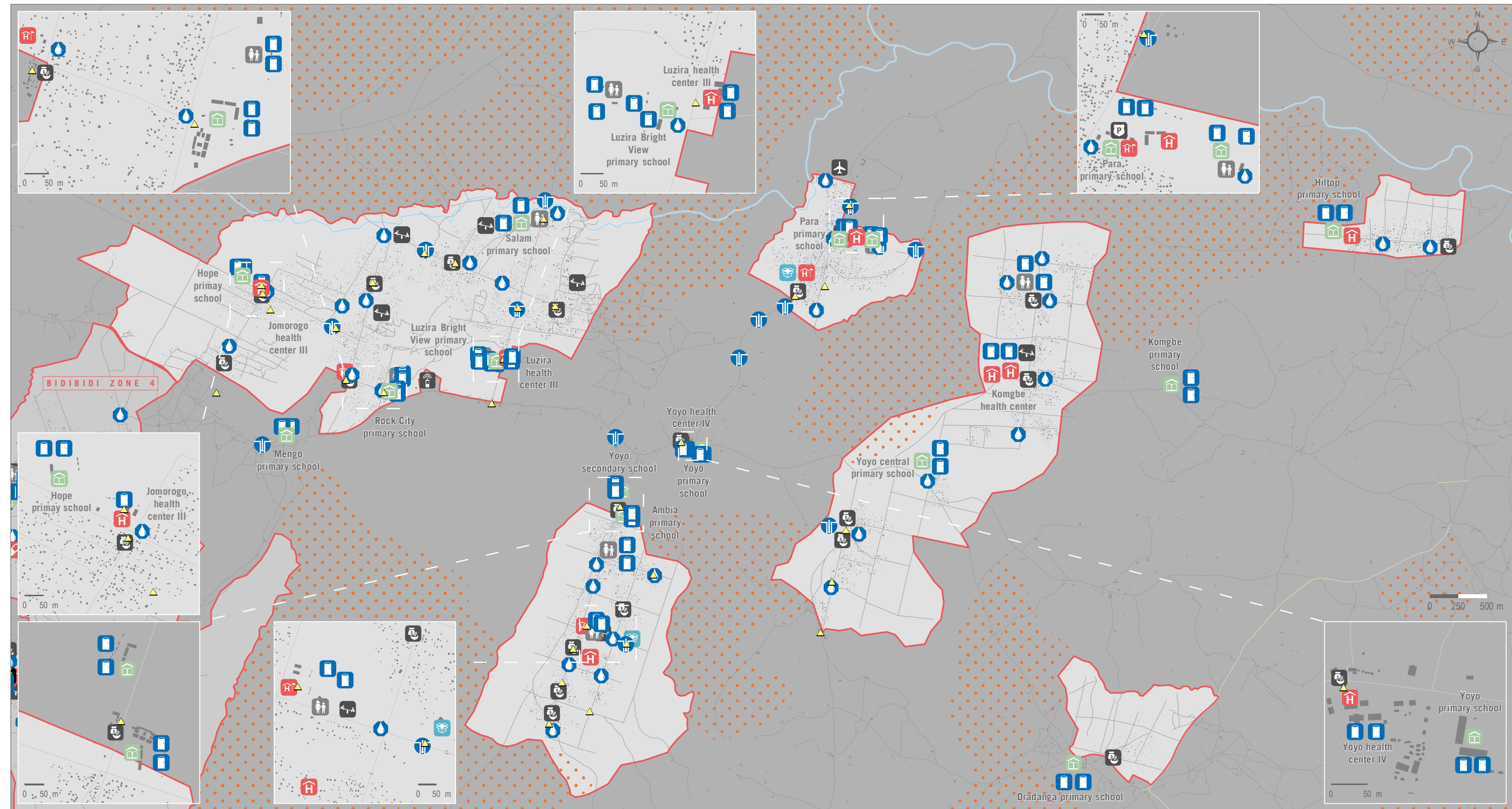


# FACILITIES MAP - Bidibidi Settlement - Zone 3 - Yumbe District - Uganda

For Humanitarian Purposes Only  
Production date: 24 October 2018



## Facilities

- |               |                   |                      |                    |
|---------------|-------------------|----------------------|--------------------|
| Water tank    | Police post       | School               | Building / shelter |
| Handpump      | Market            | Distribution center  | Refugee settlement |
| Latrine       | Playground        | Child friendly space | Agricultural land  |
| Health center | Proposed airstrip | Security light       |                    |
| Clinic        | Telecom. tower    |                      |                    |

## Roads

- |            |
|------------|
| Main road  |
| Other road |
| River      |

## Data sources:

Administrative boundaries: UBOS;  
Natural features: © OpenStreetMap contributors, UNHCR;  
Roads: © OpenStreetMap contributors, UNHCR;  
Settlement boundaries and infrastructures: © OpenStreetMap contributors, REACH Initiative, UNHCR;  
Coordinate System: WGS 1984 UTM Zone 36N  
Projection: Transverse Mercator

**Note:** Data, designations and boundaries contained on this map are not warranted to be error-free and do not imply acceptance by the REACH partners, associates, donors or any other stakeholder mentioned on this map.

File: REACH\_UGA\_Map\_Bidibidi\_Zone3\_Facilities\_24OCT2018\_A3

Contact: [uganda@reach-initiative.org](mailto:uganda@reach-initiative.org)



Funded by  
European Union  
Civil Protection and  
Humanitarian Aid