



REACH HSM: Evolution of humanitarian needs in frontline areas

December 2024 - June 2025 | Ukraine

KEY MESSAGES

- Between December 2024 and May 2025, **the proportion of settlements with severe or above multisectoral vulnerability scores rose** from 39% to 44%, with sharper rises observed in frontline oblasts like Donetsk and Zaporizka. Protection, WASH, and FSL sectors showed the most noticeable increases in severity.
- Access to services like shelter, food, heating, and financial infrastructure remains largely constrained by high costs and lack of money. Meanwhile, the reported receipt of cash-based assistance dropped from 12% to 5% of settlements, raising concerns amid broader funding cuts.
- Between December 2024 and May 2025, **the proportion of settlements with severe or higher Protection needs increased from 83% to 91%, with 81% now found as having extreme needs.** Safety concerns such as exposure to shelling, missile attacks, and trauma-related distress were the most frequently reported issues, possibly due to frontline movements.

CONTEXT & RATIONALE

Given the dynamic nature of the humanitarian situation in Ukraine, ongoing monitoring is essential to enable a comprehensive assessment of the needs and their severity among the affected people, and to ensure that humanitarian response plans remain aligned with the situation on the ground.

This factsheet supports REACH's Humanitarian Situation Monitoring (HSM) goal of providing current multisectoral data, summarizing the humanitarian situation and vulnerabilities in 222 settlements located within 50 kilometers of the frontline or the Russian Federation border.

The information is based on data collected in three rounds: Round 20 in December 2024, Round 21 in February 2025, and Round 22 in May-June 2025.

MULTISECTORAL AND PRIORITY NEEDS

HSM Settlement Vulnerability Index (SVI) is a framework based on HSM indicators to determine the severity of vulnerability at the settlement level. The SVI framework requires the calculation of individual composite scores for each sector, followed by a calculation of the multisectoral composite score as the final Settlement Vulnerability Index. More details on the SVI can be found in Annex 2.

Overall, **HSM findings indicate a slight deterioration in the humanitarian situation** between December 2024 and May 2025.

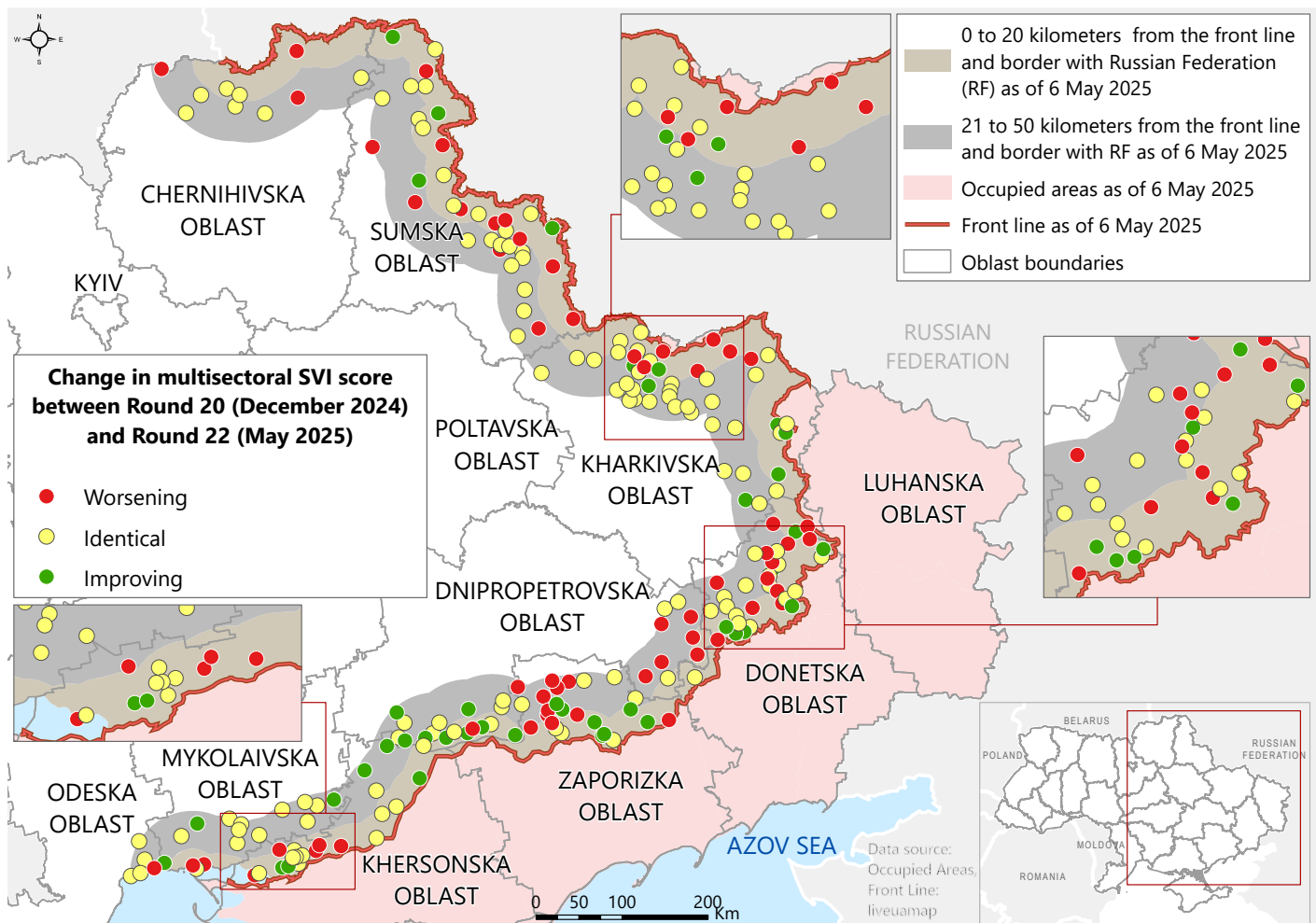
The proportion of assessed settlements with multisectoral vulnerability scores classified as severe or above increased from **39%** in December 2024 to **44%** in May 2025 (n=222).

Frontline settlements within 20 kilometers of the front line (n=102) showed little change. The share

with severe or above scores varied slightly: **59%** in December, **53%** in February, and **61%** in May. In contrast, settlements 21 to 50 kilometres away (n=120) experienced a steady rise in vulnerability. Their proportion increased from **22%** to **30%** during the same time.

By oblast, the most notable deteriorations were recorded in Zaporizka and Donetsk oblasts. In Zaporizka, the number of settlements with severe or above scores increased from 15 to 20 out of the 25 assessed. Similarly, in Donetsk, the number rose from 18 to 24 out of 35 assessed settlements.

Map 1: % of settlements by change in multisectoral SVI in May 2025 compared to December 2024 (n=222 settlements assessed in all three rounds)



FOOD SECURITY AND LIVELIHOODS

FSL vulnerability score

SVI data indicates a moderate increase in vulnerability in terms of food security and livelihoods (FSL) needs over the reporting period. The proportion of settlements with severe or higher FSL scores rose from **45%** in December 2024 to **50%** in May 2025 (n=222).

While no substantial variation was observed when disaggregating by proximity to the front line, oblast-level analysis highlights a **deterioration of the situation in Donetsk Oblast**. In this oblast, the share of settlements with severe or higher FSL scores increased from 14 out of 35 settlements in December to 23 out of 35 settlements in May 2025. Findings suggest that this deterioration is likely driven by a combination of factors, as increases in needs were observed across multiple dimensions of food security and livelihoods.

Access to financial services

Between December 2024 and May 2025, key informants (KIs) in **24%** to **32%** of assessed settlements (n=222) reported that at least 25% of residents were unable to access cash, ATMs, or banking services within their settlement. A temporary decrease was observed in February, when the proportion dropped to **24%** from **28%**, before rising again by May.

Certain settlements appeared more vulnerable. For example, by urbanity, between December

2024 and May 2025, in an average of **25%** of rural settlements (n=167), KIs reported that the majority of the population (over 50%) lacked access to financial services, compared to **9%** of urban settlements (n=55). This may indicate underlying challenges which the conflict has exacerbated and/or that conflicts' effects are more severely impacting rural settlements

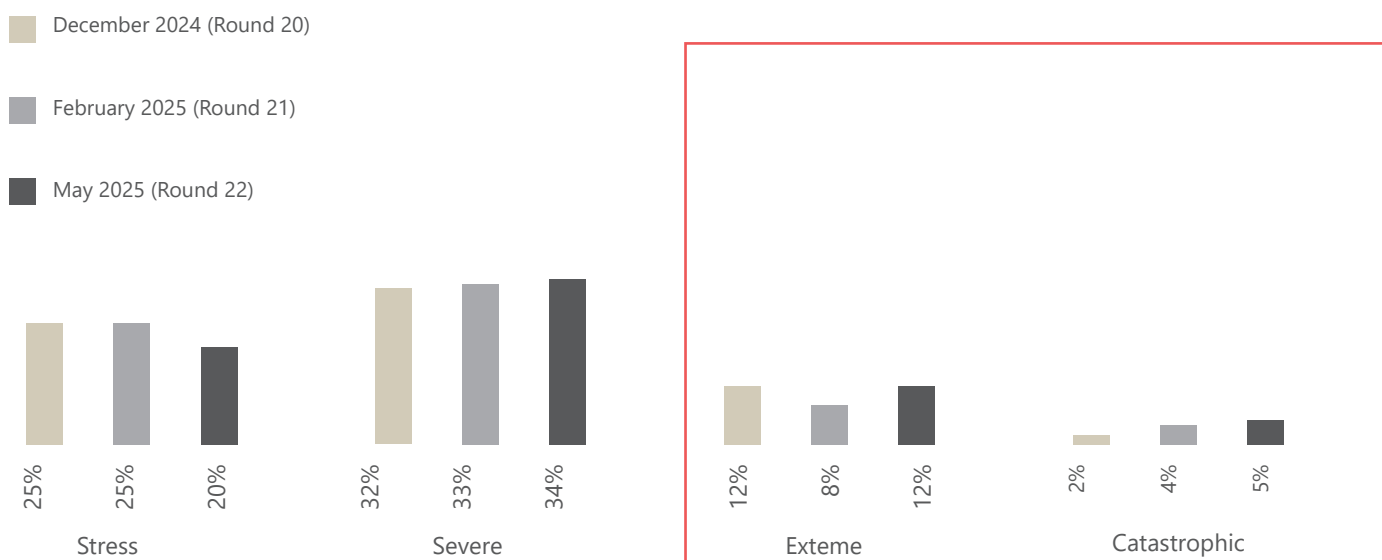
Access to food

Based on KI reports, **the percentage of settlements where at least 25% of residents were unable to access sufficient food remained consistent and limited**, ranging from **7%** to **9%** of the settlements between December 2024 and May 2025 (n=222).

However, frontline settlements within 20 kilometres of the front line/border with the Russian Federation (RF), n=102) may be more at risk, as the percentage of settlements with reported over 50% of population not being able to access sufficient food rose from **5%** to **10%** of the settlements over the three rounds of data collection.

Across the settlements where at least some residents were identified by KIs as not having access to sufficient food, the most frequently reported barriers remained in economic nature, such as lack of money and high prices. Over three rounds of data collection, the first barrier increased from **24%** (n=79) to **59%** (n=70) of settlements, and the second rose from **14%** to **29%**.

Figure 1: % of settlements by assigned FSL vulnerability score and by round (n=222 settlements assessed in all three rounds)



Access to markets

The percentage of settlements where at least 25% of residents reportedly could not access markets ranged from **16% to 26%** (n=222). In December, it was **20%**. In February 2025, it rose to **26%**, then dropped to **22%** in May. Access to markets was particularly restricted near the front line. By May 2025, KIs in **6%** of settlements located 21 to 50 kilometers away (n=120) noted that at least 25% of residents could not access markets. In comparison, in the 0 to 20 kilometers area, KIs in **41%** (n=102) of the settlements reported the same. These numbers have not changed substantially over the period of analysis.

In May 2025, KIs in **43%** of settlements reported no available markets. This barrier was noted at least twice as often as any other. The information is based on KI reports from the settlements, where reportedly at least some residents could not access markets (n=103). No noticeable change other than that.

WATER, SANITATION, AND HYGIENE (WASH)

WASH vulnerability score

The prevalence of WASH needs, as measured by SVI, remained relatively stable over the period of analysis, with the proportion of settlements scoring severe or above fluctuating between **27%** and **24%**.

Donetska Oblast consistently had the most acute WASH needs. The proportion of assessed

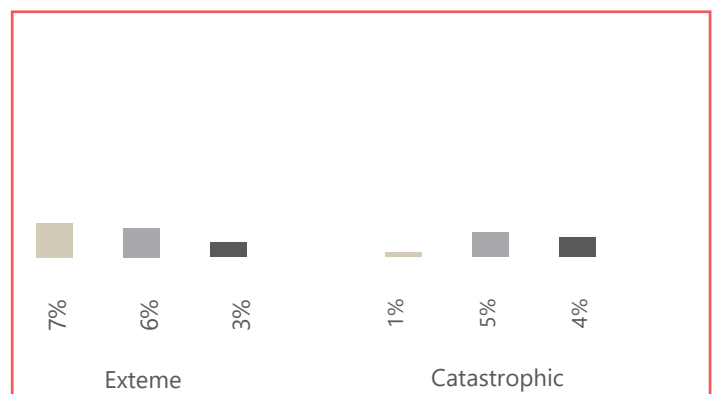
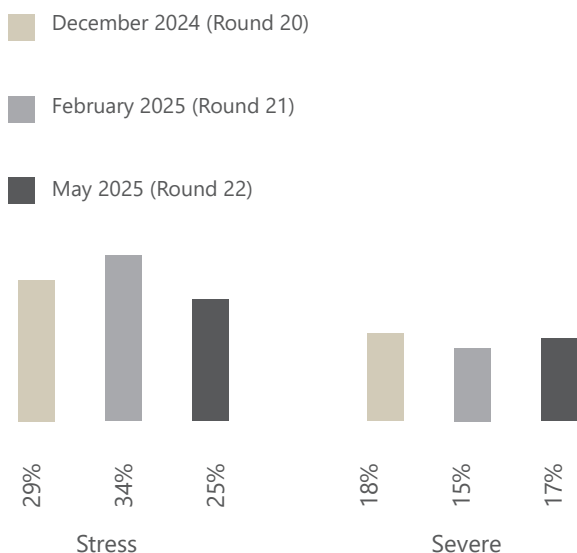
settlements with a catastrophic score rose from **6%** in December 2024 to **17%** in May 2025, peaking at **29%** in February (n=35). Similarly, in Zaporizka Oblast (n=25), the situation deteriorated notably: by May 2025, 16 out of 25 assessed settlements were found to have severe or higher WASH scores, compared to 10 in December. While the sample remains relatively small, findings point to a need for continued monitoring and prioritisation of frontline settlements in Zaporizka, particularly considering the recent advances of the RF in this oblast.¹

Access to drinking water

Findings suggest access to drinking water remained overall stable between December 2024 and May 2025, when proportion of assessed settlements where KIs reported that at least 25% of residents were unable to access drinking water stayed consistent, going from **6%** to **8%** (n=222).

In settlements where KIs reported that residents lacked access to drinking water, barriers remained consistent across rounds, though with some fluctuation in prevalence. By May 2025, breakdowns/damage to the water network was the most frequently reported barrier. It declined from **27%** in December 2024 to **17%** in February, before rising again to **21%** in May, suggesting persistent challenges with infrastructure maintenance. Reports of breakdowns/damage to water pumping stations fell from **22%** in December to **13%** in February, before rising slightly to **15%** in May. Lack of electricity or backup power was reported more steadily (**15–18%** across rounds).

Figure 2: % of settlements by assigned WASH vulnerability score and by round (n=222 settlements assessed in all three rounds)



SHELTER AND NON-FOOD ITEMS (NFIs)

SNFI vulnerability score

Between December 2024 and May 2025, HSM data indicated **a modest decrease in the overall prevalence of severe or above SNFI sectoral scores across assessed settlements**, dropping from **55%** to **48%** (n=222). This was largely driven by a reduction in settlements with severe scores, which fell from **40%** in December to **28%** in May.

However, despite this decline, **the severity of SNFI needs in the most affected areas did not improve very noticeably**. The proportion of settlements with extreme scores rose slightly from **12%** to **14%** (dipping to **8%** in February), while the share with catastrophic scores remained relatively stable at **3%**, **5%**, and **6%** across the three rounds.

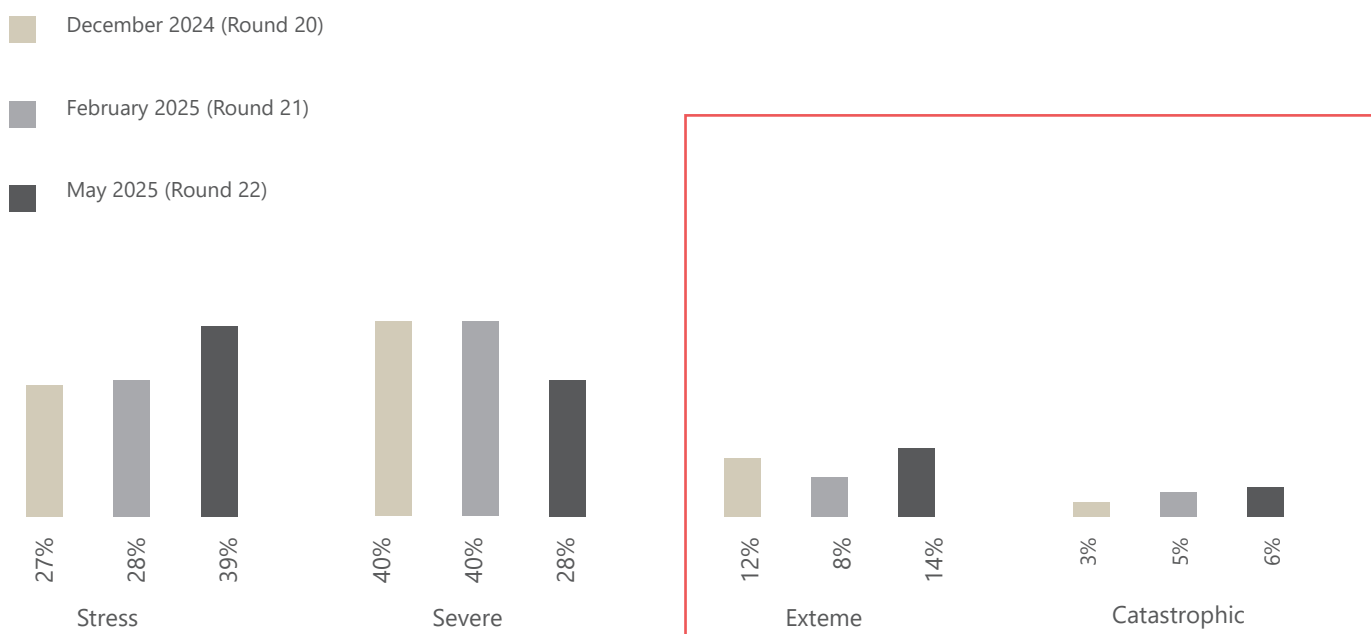
In Zaporizka Oblast (n=25), the number of settlements with extreme or catastrophic scores increased from 4 out of 25 in December 2024 to 7 out of 25 in May 2025. Similar trends were observed in Sumska (n=37), where the share rose from **5%** to **16%**, and in Kharkivska (n=47), increasing from **15%** to **23%**.

Access to housing

Findings indicate relative stability in the proportion of settlements where KIs reported that at least 25% of residents were unable to access safe and adequate housing², as it was at **8%**, **9%**, and **11%** between December 2024 and May 2025 (n=222).

Reported barriers among settlements where KIs reported some residents could not access safe and adequate shelter to accessing housing remained largely consistent, although some showed an upward trend. The share of settlements where KIs cited total collapse of shelter as a barrier increased from **27%** in December (n=89) to **33%** in May (n=110), while reporting of unsafe shelters grew from **51%** to **58%**. Other housing-related barriers remained relatively stable in frequency of reporting.

Figure 3: % of settlements by assigned SNFI SVI score and by round (n=222 settlements assessed in all three rounds)



PROTECTION

Protection vulnerability score

The prevalence of Protection needs based on the SVI score increased between December 2024 and May 2025, with the proportion of settlements with severe or higher Protection scores rising from **83%** to **91%** (n=222).

Notably, the severity of Protection needs also worsened. The share of settlements with extreme Protection scores increased from **71%** in December to **81%** in May 2025. While the proportion of settlements with catastrophic Protection scores fluctuated slightly in February (**6%**), it ultimately returned to the December 2024 level of **9%** by May 2025.

At the oblast level, nearly all assessed settlements across all oblasts were identified as having extreme or catastrophic Protection needs. In particular, Dnipropetrovska Oblast saw a marked deterioration, with the share of settlements with extreme or catastrophic scores increasing from 16 out of 25 in December to 25 out of 25 in May. A similar trend was observed in Sumska Oblast, where this proportion rose from 29 out of 37 to 37 out of 37. These trends coincided with observed frontline movements in both Sumska³ and Dnipropetrovska⁴.

Consistent with previous trend analysis⁵,

vulnerability in the Protection sector was predominantly driven by KIs reporting safety and security concerns related to attacks on civilian infrastructure, particularly in settlements with "extreme+" scores. Other key drivers included exposure to armed violence, presence of landmines and UXOs, threat of missile attacks, and the use of housing or land for military purposes.

Safety and security concerns

KIs consistently reported exposure to armed violence or shelling and the threat of missile attacks as the most prevalent safety and security concerns across all rounds between December 2024 and May 2025 (see Figure 4).

Notably, the proportion of settlements where KIs cited exposure to armed violence or shelling increased noticeably, from **48%** in December to **66%** in May (n=222). Another concern that rose markedly was trauma or psychosocial distress, reported in **21%** of assessed settlements by May 2025, up from lower levels in earlier rounds.

Importantly, in May 2025, in **16%** of assessed settlements, KIs reported both exposure to armed violence and signs of trauma or psychosocial distress, indicating a linkage between ongoing hostilities and deteriorating mental well-being among residents.

Figure 4: % of settlements by assigned Protection SVI score and by round (n=222 settlements assessed in all three rounds)

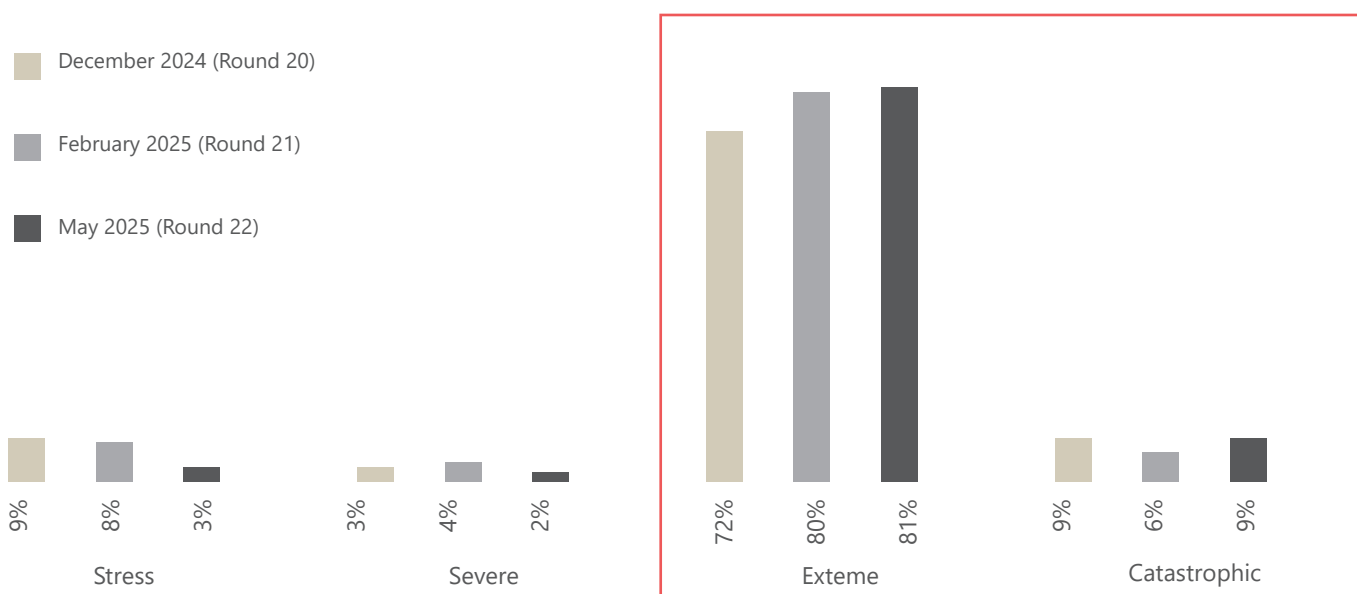


Figure 5: % of settlements by most frequently reported safety and security concerns (n=222 settlements assessed in all three rounds)

	Exposure to armed violence/shelling	Threat of missile attack	Lack of/inadequate conditions of bomb shelters	Damage or destroyed property	Presence of landmines/UXO	Social tension in the community	Trauma or psychosocial distress	Attacks on civilian facilities (schools, hospitals)
Dec 2024	48%	71%	25%	17%	10%	14%	10%	9%
Feb 2025	63%	74%	14%	13%	13%	22%	10%	6%
May 2025	66%	73%	22%	24%	17%	18%	21%	9%

HEALTH

Health vulnerability score

The share of settlements with severe or higher SVI Health scores fluctuated between **36%** and **43%** from December 2024 to May 2025 (n=222), decreasing from **39%** in December to **36%** in February before rising again thereafter. It is crucial to highlight that proportion of settlements with catastrophic scores in Health has increased most compared to other levels of vulnerability in this sector - increasing from **5%** to **10%** of the settlements.

This increase was particularly visible **in frontline areas (0 to 20 kilometres from the front line), where 20% of the settlements (n=102) had catastrophic level of vulnerability in Health based on SVI compared to 10% in December 2024.** Overall, most oblasts showed an increase in severity and prevalence of Health vulnerability scores. The scores rose not from one area alone. This, along with findings on frontline settlements, suggests that movements in these areas could be a key driver of need.

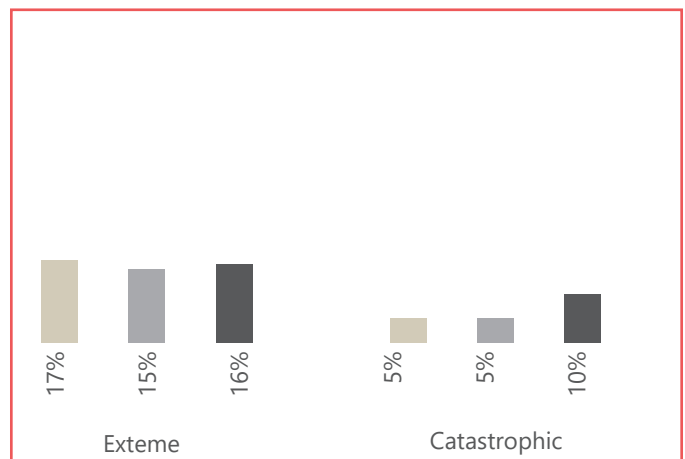
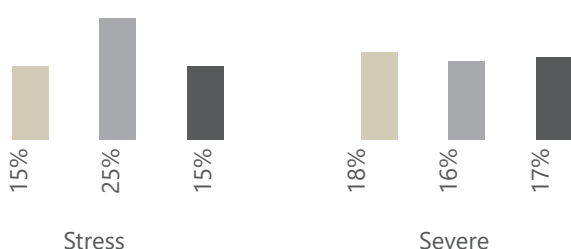
Access to healthcare

Between December 2024 and May 2025, 10-16% of settlements (n=222) had KIs reporting at least 25% of residents unable to access healthcare, with proportions shifting from **12%** in December to **10%** in February and rising to **16%** in May.

Access to healthcare services seemed particularly constrained in Donetsk (n=35), where by May 2025, percentage of settlements where over 25% were unable to access healthcare services increased from **23%** to **34%**. An increase was also observed in Sumska (n=37) - from **5%** to **16%**.

Most frequently reported barriers included cost of medicines (by May 2025, reported by KIs in 25% of the settlements, n=109), as well as lack of functional healthcare facilities (**22%**), both showed only a minor increase in reporting between December 2024 and May 2025. Another most commonly reported barrier was shortage of medical personnel - reported by KIs in **22%** of the settlements by May.

Figure 6: % of settlements by assigned Health vulnerability score and by round (n=222 settlements assessed in all three rounds)



ACCOUNTABILITY TO AFFECTED PEOPLE

Assistance received

Findings indicate that **food items or kits remained the most commonly reported type of assistance received across assessed settlements** (n=222), with the proportion of KIs indicating such support remaining relatively stable, fluctuating between **66%** and **70%** across the rounds (see Figure 7). A similar pattern of consistency was observed for other frequently reported assistance types.

However, **the proportion of settlements where KIs reported the receipt of cash-based assistance declined** from **12%** in December 2024 to just **5%** in May 2025 (n=222). Although the sample remains limited, this decline is noteworthy, particularly in the context of broader reductions in humanitarian funding.

Other assistance types were each reported in

fewer than **5%** of settlements on average over the three rounds, with no considerable variation observed over time.

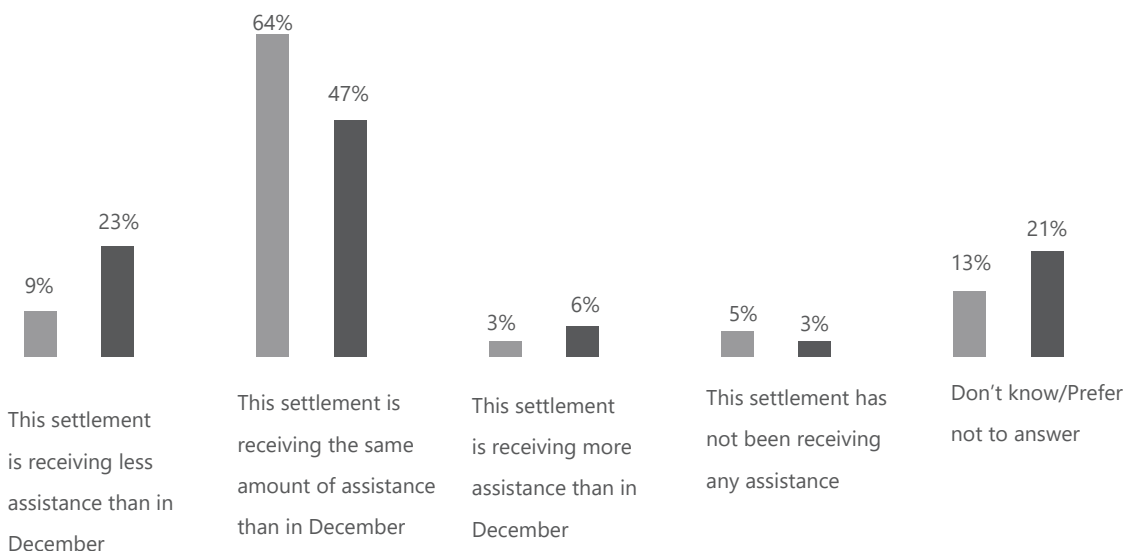
With the purpose of measuring effects of funding cuts, HSM also asked to compare aid received in the past month before data collection (January/February for Round 21 and April/May for Round 22) with the amount of aid received in December 2024, which has produced the results indicative of a potential reduction of humanitarian aid in frontline settlements (see Figure 8).

However, this should be taken with particular caution given a longer recall period than in other questions as well as expectation bias - respondents may intentionally or unintentionally exaggerate or downplay their past experiences based on emotions or perceived benefits. For instance, individuals might underreport previous assistance if they believe it increases their chances of receiving further aid.

Figure 7: % of settlements by perceived change in assistance receipt compared to December 2024 (n=222)

	Food items/kits	Hygiene items/kits	Nutrition	Cash-based assistance	Solid fuel for heating
Dec 2024	66%	31%	14%	12%	9%
Feb 2025	70%	23%	9%	8%	4%
May 2025	67%	28%	8%	5%	0%

Figure 8: % of settlements by perceived change in assistance receipt compared to December 2024 (n=222)



CONCLUSION

The findings indicate a gradual deterioration of humanitarian conditions in frontline areas of Ukraine between December 2024 and May 2025, with multisectoral vulnerability rise being particularly notable in Donetsk and Zaporizka oblasts.

Protection needs remained the most acute, with concerns regarding exposure to armed violence or shelling and the threat of missile attacks being reported in most of the assessed settlements. Food security and livelihoods, health, WASH, also showed worsening trends, while SNFI needs remained high in specific areas despite slight improvements overall. At the same time, access to services is increasingly constrained by economic barriers, compounded by a reported decline in cash-based assistance.

These findings underscore the urgent need for targeted support to address both immediate needs, as well as broader socioeconomic vulnerabilities in the most affected settlements.

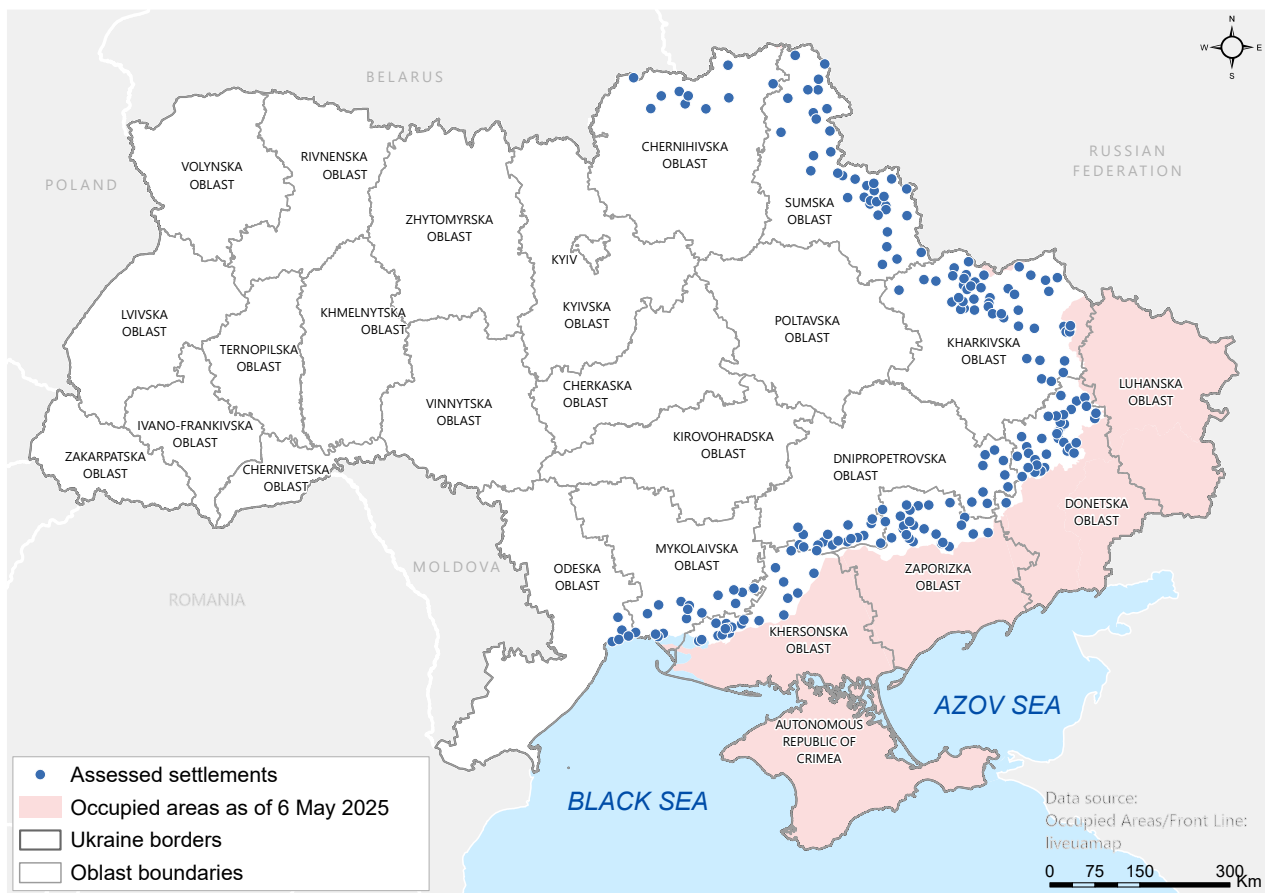
ABOUT REACH

REACH Initiative facilitates the development of information tools and products that enhance the capacity of aid actors to make evidence-based decisions in emergency, recovery and development contexts. The methodologies used by REACH include primary data collection and in-depth analysis, and all activities are conducted through inter-agency aid coordination mechanisms. REACH is a joint initiative of IMPACT Initiatives, ACTED and the United Nations Institute for Training and Research - Operational Satellite Applications Programme (UNITAR-UNOSAT).

ENDNOTES

- 1 The New Voice of Ukraine, [Russian forces intensify offensive on Zaporizhzhya front - Syskyi](#), May 2025
- 2 Safe and adequate housing is referring to a structurally sound housing accommodation ready for immediate occupancy (i.e. no damages/defects due to the conflict), sufficient in size to accommodate all household members, with electricity, heating and sanitary facilities.
- 3 Kyiv Independent, [From buffer zone to new front: Russia pushes deeper into Sumy Oblast](#), June 2025
- 4 Institute for the Study of War, Russian Offensive Campaign Assessment, June 12, 2025
- 5 REACH Initiative, [Humanitarian Situation Monitoring: Evolution of Needs \(July-October 2024\)](#), January 2025

ASSESSMENT COVERAGE



HSM Methodology Overview

The factsheet is based on data collected in December 2024 (Round 20), February 2025 (Round 21), and May/June 2025 (Round 22) through phone interviews with community key informants (CKIs), including representatives from local government, local non-governmental organisations (NGOs), and specific population groups such as older persons, people with disabilities, children, women, internally displaced people (IDPs), returnees, and others. A total of 222 settlements were assessed in each round.

Starting from Round 22 (May/June 2025), updated sampling criteria were introduced to ensure more robust coverage of frontline settlements:

Settlements within 50 km of the front line:

- All administrative centres (hromada, raion, and oblast centres)
- All settlements with more than 1,000 residents, based on IOM Frontline Flow Monitoring
- If updated population figures were unavailable: all settlements with more than 2,500 residents before February 2022

In Rounds 20 (December 2024) and 21 (February 2025), sampling followed a zonal split:

- 1) Zone A: Settlements within 30 km of the front line or the state border with the Russian Federation, as monitored by LiveUA.
- 2) Zone B: Settlements within 30–100 km of the front line, areas retaken by the Government of Ukraine (GoU), and raions intersecting at least 50% with these areas.

Sampling in these zones applied the following rules:

Zone A:

- All administrative centres (hromada, raion, and oblast centres)

Settlement Vulnerability Index (SVI) Framework

REACH Ukraine developed this framework based on HSM indicators to determine the severity of vulnerability at the settlement level. The data utilised in the SVI's score calculation is reported by CKIs referring to the situation in the whole settlement, thus does not capture specific household inputs and potential nuances within individual household situations. Accounting for the different approaches, indicators used, and objectives, the current framework should not be understood as comparable with other similar frameworks, including by REACH.

The SVI framework requires the calculation of individual composite scores for each sector, followed by a calculation of an inter-sectoral composite score as the final Settlement Vulnerability Index. **The framework was updated for Round 17, based on past SVI analyses and following consultations with humanitarian partners, and therefore SVI scores before Round 17 cannot be compared with SVI scores from Round 17 onwards.**

The framework is composed of HSM indicators across six sectors: Food Security and Livelihoods, Shelter and Non-food items (NFIs), Water, Sanitation, and Hygiene (WASH), Healthcare, Protection, and Education. The indicators incorporated in the calculation of sectoral scores were selected based on the information they capture regarding people's access to basic services and essential items. The indicators not incorporated in the score will still be used as part of the analysis and reporting as a way to present a comprehensive overview of the situation in the assessed settlements.

'Severity' signifies the intensity of vulnerabilities in the settlement, using a scale that ranges from 1 (minimal/none) to 4+ (Extreme and Risk of Catastrophic/Sectoral Collapse). The levels of sectoral vulnerability imply:

- **None/minimal:** Essential basic sectoral needs are met in the settlement,
- **Stress:** Borderline inability to meet basic sectoral needs in the settlement,
- **Severe:** Moderate inability to meet basic sectoral needs in the settlement,
- **Extreme:** Extreme inability to meet basic sectoral needs in the settlement,
- **Extreme+:** Collapse of basic services and/or total inability to meet basic sectoral needs in the settlement,

- All settlements with more than 1,000 residents (IOM Frontline Flow Monitoring)

- If updated population figures were unavailable: all settlements with more than 2,500 residents before February 2022

Zone B:

- All administrative centres (hromada, raion, and oblast centres)

- All settlements with more than 1,000 residents before February 2022

Across all three rounds, the number of CKIs per settlement was adapted to population size (based on pre-February 2022 figures) to account for greater variation in larger settlements:

- 3 CKIs for settlements with 1,000–9,999 residents
- 5 CKIs for settlements with 10,000–99,999 residents
- 7 CKIs for settlements with 100,000+ residents

All KI responses from the same settlement were aggregated to have one data point for each variable per settlement. The **Data Aggregation Plan** used the **average approach** to aggregate the settlement responses by using a severity scale in cases of **single-choice** questions. In case of **multiple-choice** questions, the rule was to select all responses that have been reported by at least 1 out of 3 respondents, 2 out of 5 respondents, and 3 out of 7 respondents in the settlements per the relevant categories, as presented above.

The statistics presented in this brief **cannot be extrapolated to represent a proportion (%) of the population, and thus should be interpreted as indicative** rather than representative. Given the small and unrepresentative sample, these results only provide an indicative understanding of the situation in the assessed areas.

Sectoral vulnerability scores were calculated using the "maximum" rule, i.e. the final sectoral vulnerability score will be determined by the highest score of any composite indicator included in the sector score calculation. Individual composite indicators were assigned a score from 1 (minimal) to 4+ (extreme+), based on aggregated key informants responses in the settlement for each indicators. Sectoral vulnerability scores are calculated based on the sectoral indicators incorporated in the framework included in Annex. If an indicator cannot be recoded to 1-4+ values, it is by default given a value of 1 (Minimal).

For the multisectoral SVI score, the mean (average) of sectoral scores was calculated and rounded up if the score has a decimal of 0.5 or higher to assign it to a value (1-4+, Minimal to Extreme+).

Please refer to the Framework in Annex for more details.

Due to the included data being indicative in the scoring process, the resulting scores cannot be considered representative of the conditions within settlements and offer an approximate understanding of the humanitarian situation.

Disclaimer: Given that the SVI framework has been updated for Round 17 (July 2024) to ensure accuracy of findings, REACH advises caution against comparing sectoral vulnerability scores and multisectoral SVI scores between Rounds 8-16 and Round 17 onwards.

Key changes between the previous SVI framework (Rounds 8-16) and the current SVI framework relate to:

- **Sectoral vulnerability scores:** following an update to the HSM questionnaire in Round 17, composite indicators of every sector were reviewed. HSM team also reviewed the severity score (1-5) of response options for each indicators. Notably, all sectors now include only one indicator with "extreme+" scoring, corresponding to the worst possible sectoral outcome.
- **Aggregation rule:** sectoral vulnerability score are now calculated with the "maximum" aggregation rule, instead of the "average" (aligning with REACH MSNI approach). Indeed, HSM observed that with the previous framework, for sectors with more than two composite indicators, the "average" aggregation rule underestimated the level of sectoral needs as non-critical indicators dragged down the sectoral vulnerability score. Therefore, the current sectoral vulnerability scores gives a more accurate picture of sectoral needs for the majority of residents in the settlement.

ANNEX: HSM AND SVI METHODOLOGIES

Sector	Indicator
Food Security & Livelihoods	% of settlements by the level of need in relation to accessing sufficient food in the 30 days prior to data collection
	% of settlements by the level of need in relation to accessing markets to purchase goods in the 30 days prior to data collection
	% of settlements by main barriers for people to access markets in the 30 days prior to data collection
	% of settlements by main barriers to accessing food items in the 30 days prior to data collection
	% settlements by level of needs in relation to accessing cash, ATMs and banking services in the 30 days prior to data collection
	% of settlements by coping strategies used to cover basic needs in the 30 days prior to data collection
Shelter & Non-Food items	% of settlements by the level of need in relation to accessing safe and adequate housing in the 30 days prior to data collection
	% of settlements by main barriers for people to access safe and adequate housing in the 30 days prior to data collection
	% of settlements by main barriers for displaced persons to access safe and adequate housing in the 30 days prior to data collection
	% of settlements by main sources of energy most people used for heating during winter
	% of settlements by main barriers people faced in accessing heating during winter
	% of settlements by the proportion of civilian housing damaged in the 30 days prior to data collection
	% settlements by MOST people having access to non-food items (NFIs) in the 30 days prior to data collection

Sector	Indicator
Health	% of settlements by the level of need in relation to healthcare services in the 30 days prior to data collection
	% of settlements by main barriers people faced to access healthcare services in the 30 days prior to data collection
	% of settlements by types of healthcare/facilities people were unable to access in the 30 days prior to data collection
	% of settlements by the level of need in relation to medicine in the 30 days prior to data collection
Protection	% of settlements by main safety and security concerns faced by people in the 30 days prior to data collection
	% of settlements by the degree of restrictions on movement into or out of the settlement
Education	% of settlement by number of children not being able to attend
	% of settlement by modality of learning % of settlement by types of critical infrastructure damaged in the 30 days prior to data collection
WASH	% settlements by frequency of disruptions to water supply in the 30 days prior to data collection
	% of settlements by the level of need in relation to accessing drinking water in the 30 days prior to data collection
	% of settlements by the level of need in relation to accessing technical water in the 30 days prior to data collection
	% of settlements by the level of need in relation to accessing improved sanitation facilities in the 30 days prior to data collection