

## Summary

This profile provides an overview of water, sanitation and hygiene (WASH) infrastructure within Camp 7 in Ukhia, Cox's Bazar. Primary data for the sixth round was collected between 22 April - 12 May 2018.<sup>1</sup> Findings should be considered indicative only. The full camp dataset is available on [HDX](#).

## Site Overview

# of individuals:	39,022
# of households:	9,354
# of shelters:	4,488
# of individuals per shelter:	8.7

## Key WASH Infrastructure

# of latrines: (% functional and safe <sup>2</sup> ):	1,091 (86%)
# of improved water sources: <sup>3</sup> (% functional):	521 (83%)
# of washrooms:	404

## Location Map



## Water Access

### Three most commonly identified types of water points, by functionality:



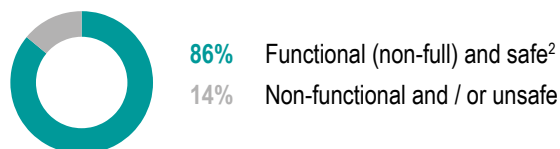
### Key sectoral standards:

	Target	Current Round	Achievement
# of people per functional improved water source <sup>3</sup>	max. 250	90	<span style="color: green;">●</span>
% of shelters with at least 1 functional improved water source <sup>3</sup> within 200m	100%	100%	<span style="color: green;">●</span>
% of functional improved water source with no latrine within 10m	100%	33%	<span style="color: red;">●</span>

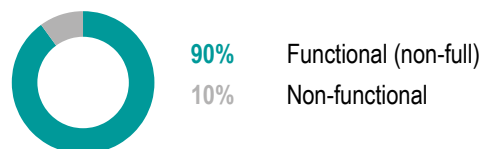
## Sanitation

### Latrine characteristics:

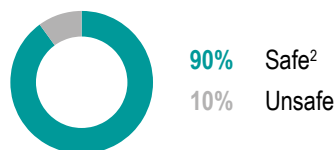
#### Functionality and safety



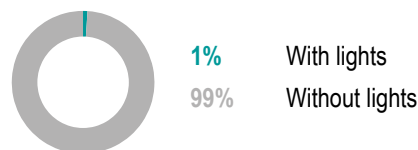
#### Functionality



#### Safety



#### Lighting



### Key sectoral standards:

	Target	Current Round	Achievement
# of people per functional (non-full) and safe latrine <sup>2</sup>	max. 20	42	<span style="color: red;">●</span>
# of people per functional (non-full) latrine	max. 20	40	<span style="color: red;">●</span>
# of people per safe latrine <sup>2</sup>	max. 20	40	<span style="color: red;">●</span>
% of shelters with at least one functional and safe latrine <sup>2</sup> block within 50m	100%	90%	<span style="color: green;">●</span>

Targets based on long term WASH Sector Standards / Indicators for the Rohingya response, Sphere Minimum Standards as well as Department of Public Health and Environment (DPHE) Minimum Standards. ● Minimum standard/indicator reached, ● 75-99% of the minimum standard reached, or within 25% of minimum standard reached, ● 50-74% of the minimum standard reached, or within 26-50% of minimum standard reached, ● Less than 50% of minimum standard reached, or within greater than 50% of minimum standard reached.

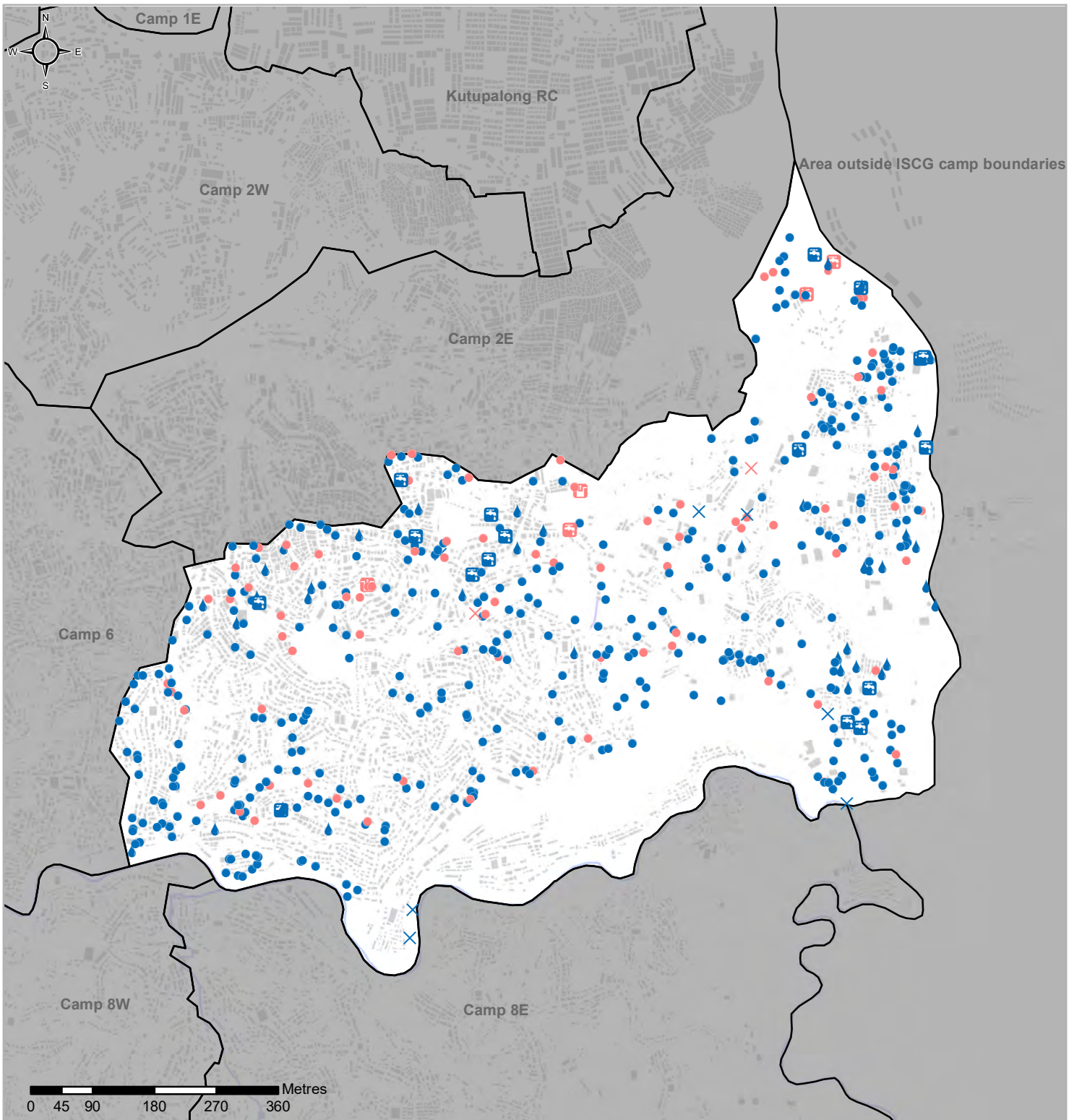
<sup>1</sup> REACH enumerators conducted a full sweep of all sites and camps (as per boundaries defined by ISCG) and used a Kobo form to log all key infrastructure observed during this sweep.

<sup>2</sup> 'Safe' refers to fully covered latrines (i.e. a latrine with four walls, a roof and a lockable door).

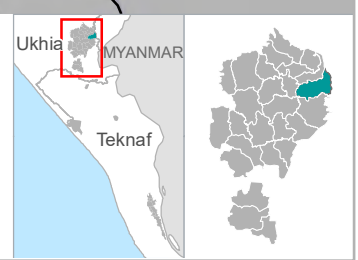
<sup>3</sup> This includes handpumps / tubewells, tapstands and water tanks.



## Water Access

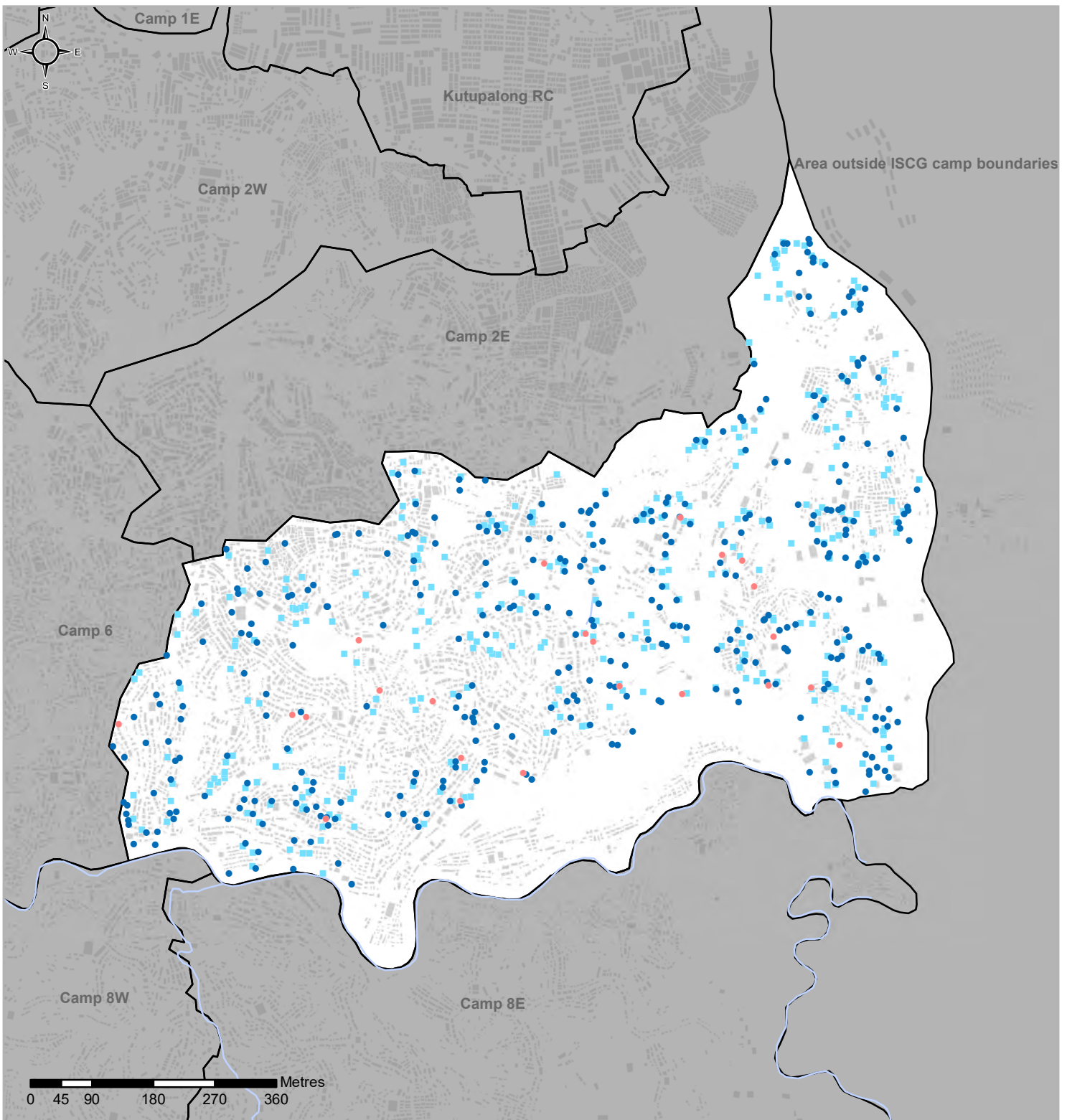


	Functioning	Non-functioning		
Hand pump / tubewell	● 370	● 84	Shelter	+
Tapstand	☒ 17	☒ 3	Camp boundary	⊕
Well	☒ 0	☒ 2	River	—
Water tank	💧 44	💧 2	<i>The boundaries and names used on this map do not imply official endorsement or acceptance by the United Nations</i>	
Unimproved water source	✕ 7	✕ 2		





## Sanitation



	<b>Functioning</b>	<b>Non-functioning</b>		
Latrines	● 366	● 23	Shelter	
WASH rooms	■ 333		Camp boundary	
			River	

*The boundaries and names used on this map do not imply official endorsement or acceptance by the United Nations*

