

# Somalia - Galkacyo - IDP Settlement

## Shelter Density (February 2014)

For humanitarian relief purpose only  
Production date : 27 May 2014

47°25'0"E

47°25'30"E

47°26'0"E

47°26'30"E

### Shelter Density (shelters/hectare)

- 1 - 30
- 31 - 60
- 61 - 100
- 101 - 142

Shelters were mapped across Galkacyo town by UNOSAT satellite image analysis. The shelter count used a satellite image acquired on 14 February 2014. The shelter density presented in this map was then calculated from the shelter count.

### Settlements

- REACH-assessed IDP Settlements

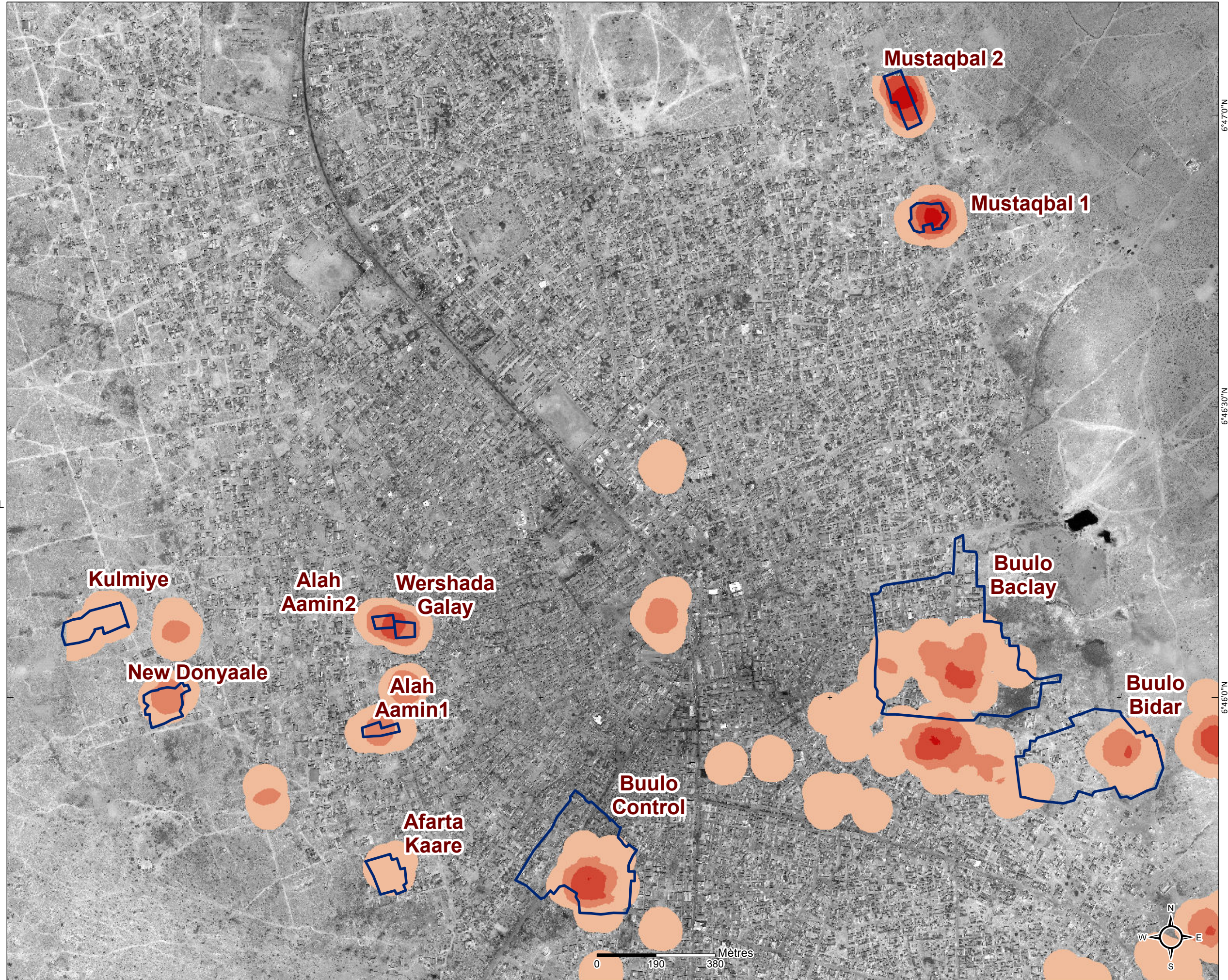
Data sources:  
Facilities and IDP sections: REACH assessment  
Shelter Points: UNOSAT  
Admin level: OCHA COD  
Imagery Date: 14 February 2014  
WorldView-2/DigitalGlobe  
Coordinate System: WGS\_1984\_UTM\_Zone\_38N  
File:  
SOM\_Galkacyo\_IDP\_ShelterDensity\_27may2014\_A3L  
Contact : reach.mapping@impact-initiatives.org

*Note: Data, designations and boundaries contained on this map are not warranted to error-free and do not imply acceptance by the REACH partners, associated, donors mentioned on this map. For Humanitarian purposes only.*

### Funded by



Humanitarian Aid  
and Civil Protection



6°47'0"N

6°46'30"N

6°46'0"N