



Informal Settlement Profiles, November 2016

Chahar Rahi Qanbar Camp 1, Helmandi Camp Kabul District, Kabul Province, Afghanistan



Background

This profile provides an overview of conditions in the informal settlement **Chahar Rahi Qanbar Camp 1, Helmandi Camp**, located in Kabul district, Kabul province. This settlement is **urban**, and its residents live in **mud houses with tarpaulin roofs**.

Key Figures

	Households	Individuals	Avg HH Size
Current residents	1200	6000	5.0
IDPs	1200	6000	5.0
Returnees	0	0	N/A
Other groups	0	0	N/A

Size of settlement	70435 sq m
Average area per person	12 sq m
Altitude	1835 m

Displacement

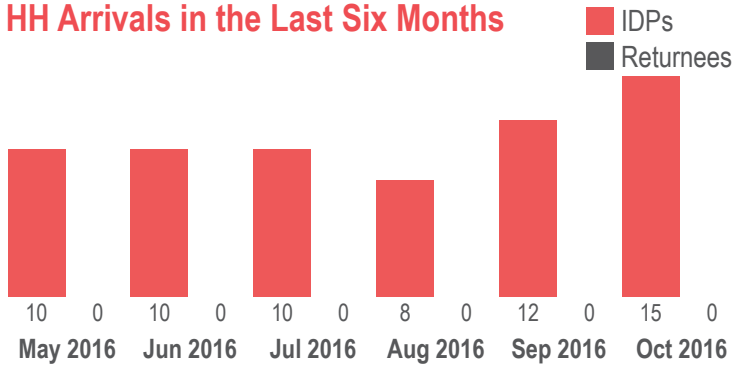
The informal settlement at Chahar Rahi Qanbar, one of the largest in Kabul, is divided into two portions. Camp 1 is predominantly populated by Pashtuns from the Helmand area, and Camp 2 by Tajiks from other parts of Afghanistan.

The Helmandi camp was first settled in 2008 on land belonging to the Government of Afghanistan. All residents of the camp are IDPs from Helmand, Uruzgan and Kandahar Provinces, and nearly all are Pashtun, with less than 1% of residents estimated to be Tajik. Residents do not have to pay rent or fees to use this land.

The first 200 IDP households arrived in 2008 from Sholgareh District, Balkh Province, though few current residents are from the north. Since then, IDPs have continued to arrive at a relatively constant rate, with larger-than-normal influxes in 2010 (185 households from Sangin District, Helmand Province), 2013 (120 households from Zheray District, Kandahar Province), and 2015 (195 households from Khanshin District, Helmand Province).

Nearly all camp residents plan to remain in this settlement for at least the next month, as they perceive few alternatives.

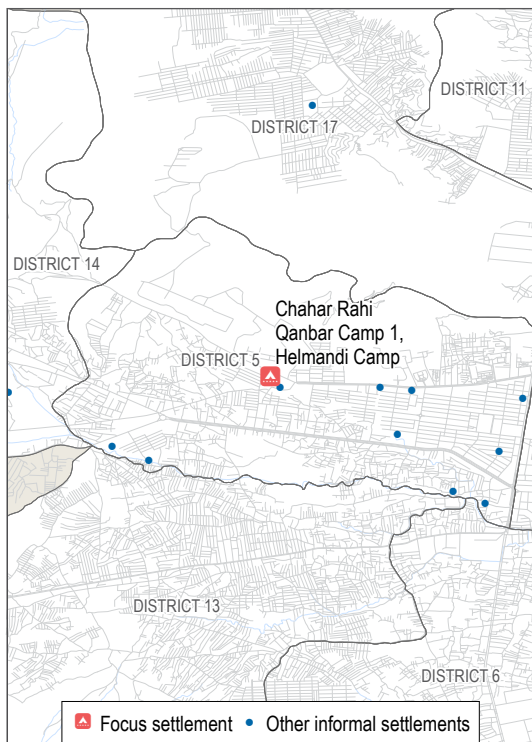
HH Arrivals in the Last Six Months



Previous Areas of Residence

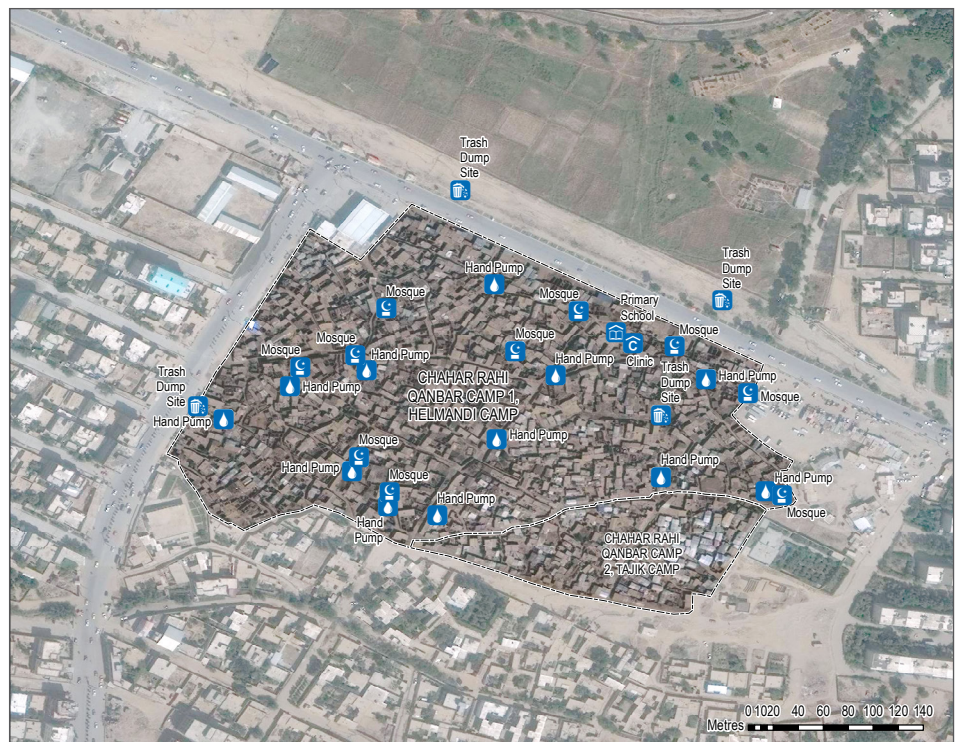


Location Map



Informal Settlement Map

Lat. N 34.5315 Long. E 69.07772





Informal Settlement Profiles, November 2016

Proje Hussain Khel, Chaman Puli Shina 1
Kabul District, Kabul Province, Afghanistan



Background

This profile provides an overview of conditions in the informal settlement **Proje Hussain Khel, Chaman Puli Shina 1**, located in Kabul district, Kabul province. This settlement is **urban**, and its residents live in **mud houses with tarpaulin roofs**.

Key Figures

	Households	Individuals	Avg HH Size
Current residents	140	840	6.0
IDPs	30	180	6.0
Returnees	110	660	6.0
Other groups	0	0	N/A

Size of settlement	13519 sq m
Average area per person	16 sq m
Altitude	1750 m

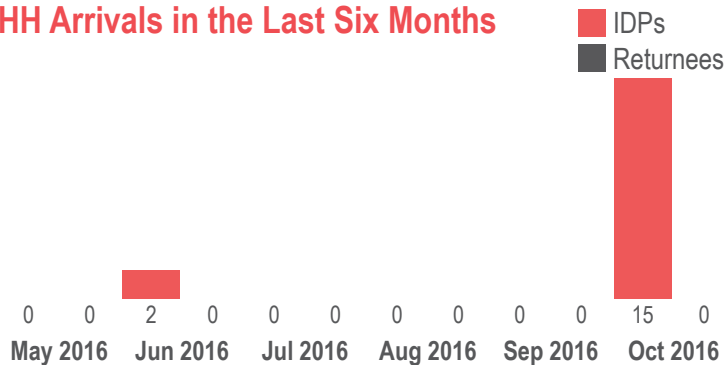
Displacement

The Chaman Puli Shina 1 settlement, overseen by resident Khair Mohammad, is one of two on the outskirts of Proje Hussain Khel and one of four in the vicinity of Puli Shina. It was founded in 2011 on land owned by the Government of Afghanistan. Nearly all current residents of the settlement are Tajik, but only 21% are IDPs; the remainder are returnees who formerly lived in Pakistan and Iran.

The first 25 households to move to this settlement in 2011 were returnees who had formerly lived in Peshawar, Pakistan and Isfahan, Iran. Another significant influx of 30 returnee households came from Isfahan in 2013, and a third of 20 households arrived from Peshawar in 2014, in addition to a trickle of individual households. More recent arrivals have included a group of 50 IDP households from Khanabad District, Kunduz Province, in 2015, of whom some have since moved to other sites or returned to their homes.

The population has remained stable in recent months, with the only influx of note being a group of 15 IDP households that arrived in October 2016. Nearly all residents plan to remain in this settlement for at least the next month, as they are able to stay here at no cost.

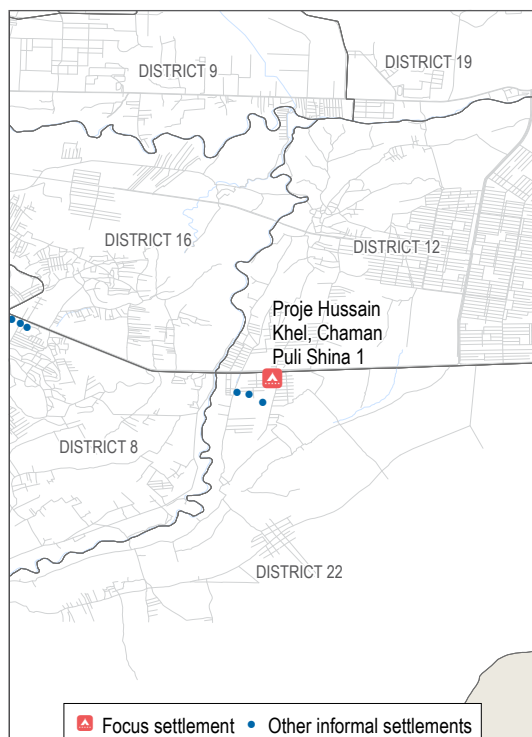
HH Arrivals in the Last Six Months



Previous Areas of Residence



Location Map



Informal Settlement Map



Lat. N 34.49491 Long. E 69.28796



Informal Settlement Profiles, November 2016

Qala-e Wahid Kucha-e Motar Shuyi
Kabul District, Kabul Province, Afghanistan



Background

This profile provides an overview of conditions in the informal settlement **Qala-e Wahid Kucha-e Motar Shuyi**, located in Kabul district, Kabul province. This settlement is **urban**, and its residents live in **mud houses with tarpaulin roofs**.

Key Figures

	Households	Individuals	Avg HH Size
Current residents	125	750	6.0
IDPs	110	660	6.0
Returnees	15	90	6.0
Other groups	0	0	N/A

Size of settlement	5578 sq m
Average area per person	7 sq m
Altitude	1791 m

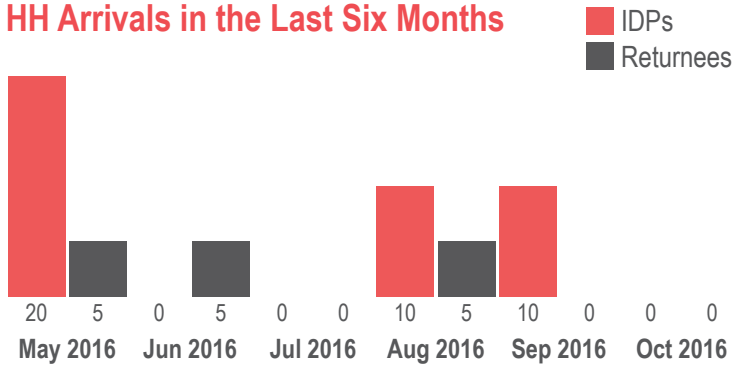
Displacement

This loosely organised informal settlement, named after a nearby road lined with car-related shops, consists of nine small plots of land throughout Qala-e Wahid, Kabul. The settlement was first established in 2008 on privately owned land and expanded as IDPs continued to arrive. Eighty-eight percent of residents are IDPs, most from Nangarhar, Parwan and Kunduz Provinces. The settlement is ethnically diverse, with an estimated 55% of residents being Tajik, 40% Pashtun and 5% Uzbek.

The first residents to arrive in 2008 were 3 returnee households who had formerly lived in Peshawar, Pakistan; another 12 households returned from Peshawar in 2012. IDP influxes tended to be larger: 40 households from Surkhrod and Behsud Districts, Nangarhar Province, in 2009; 25 households from Charikar District, Parwan Province, in 2012; and another 25 households from Khanabad District, Kunduz Province, in 2015. IDPs continued to arrive in large numbers, and returnees in smaller numbers, throughout 2016.

Residents report difficulty accessing basic services, including food, drinking water, health facilities and schools. However, nearly all residents plan to remain for at least the next month due to proximity to work, relatively low rent and a perceived lack of other options.

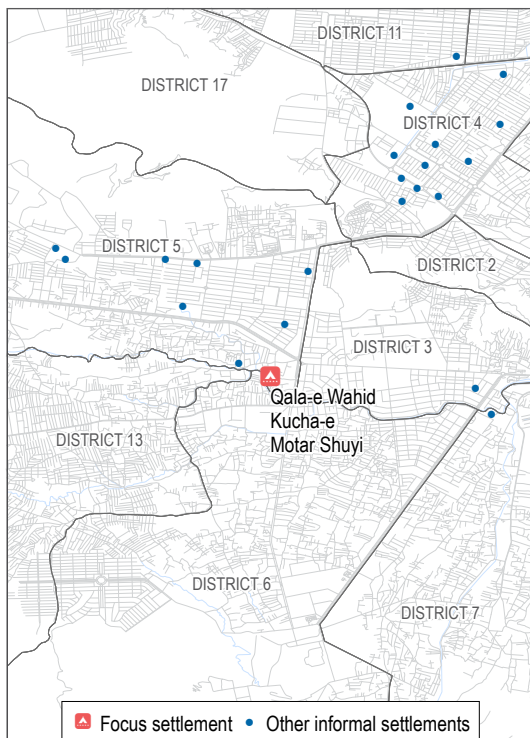
HH Arrivals in the Last Six Months



Previous Areas of Residence



Location Map



Informal Settlement Map

Lat. N 34.50978 Long. E 69.11261

