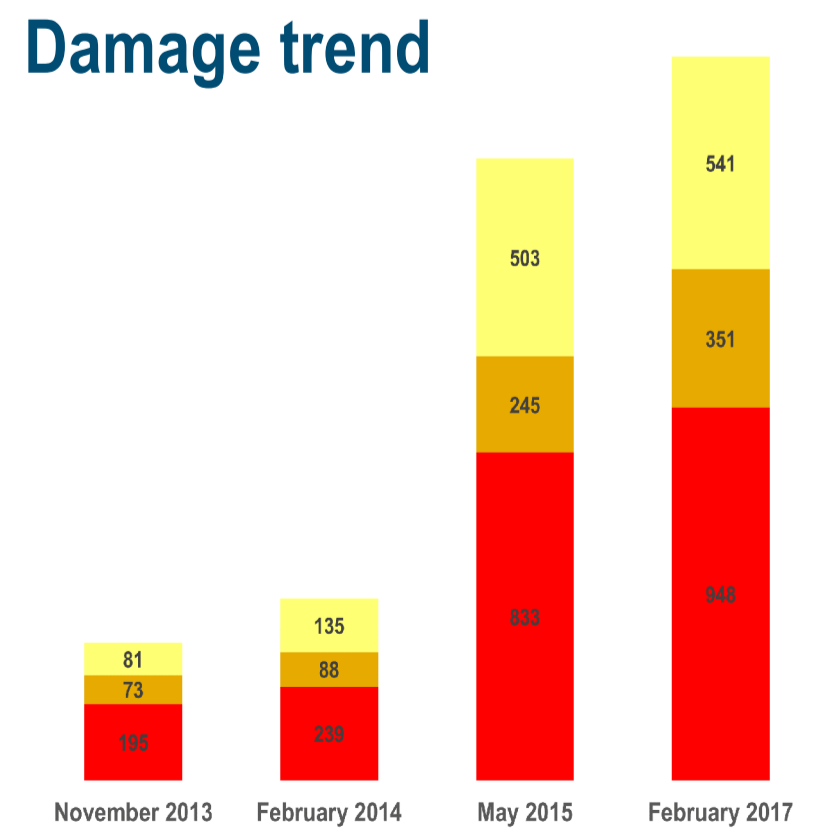
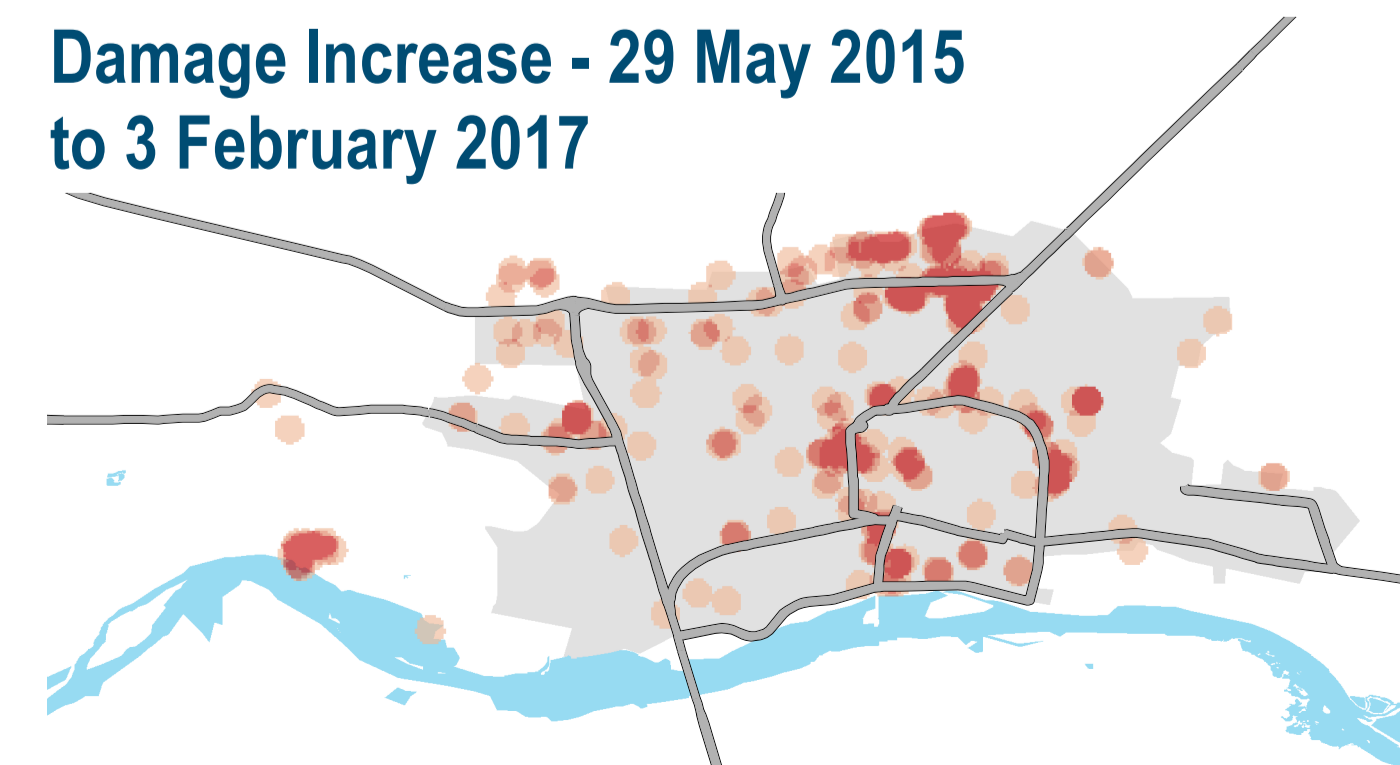
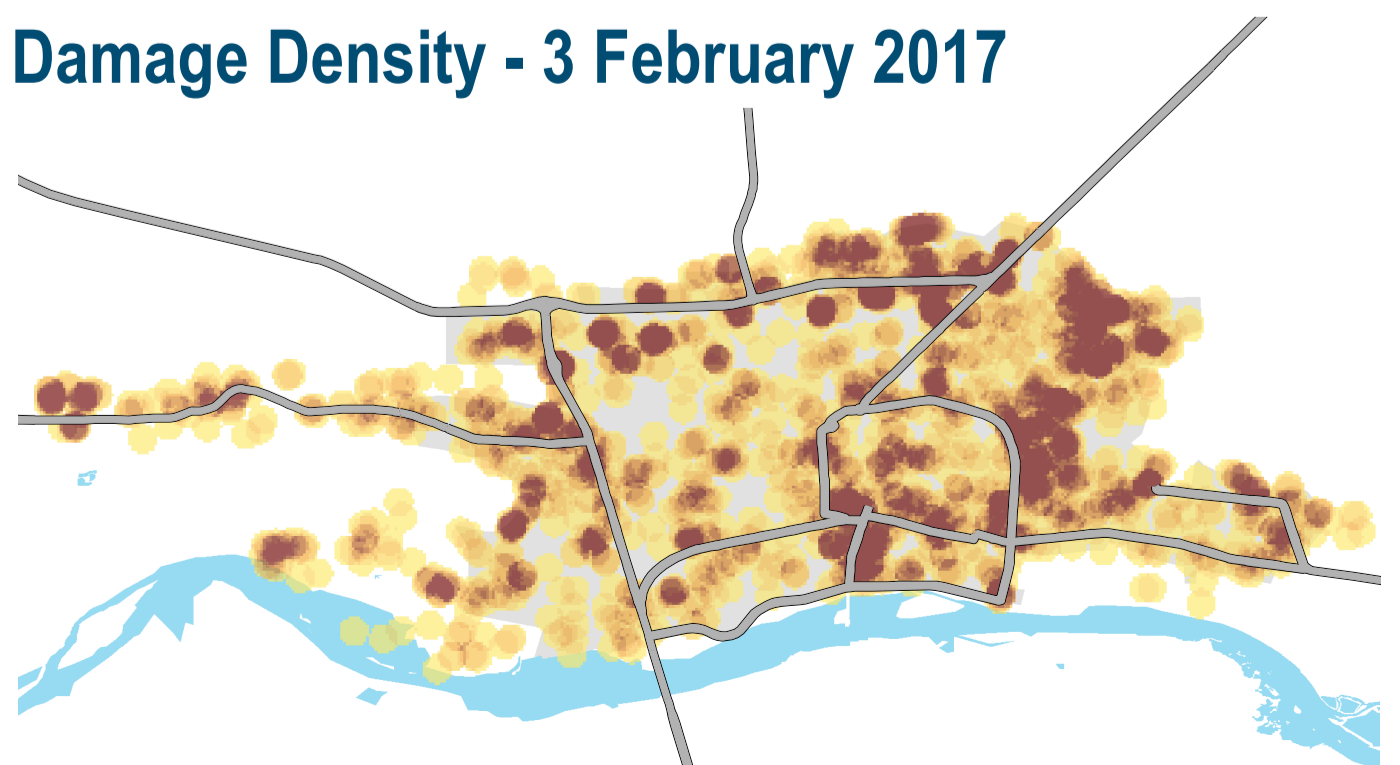
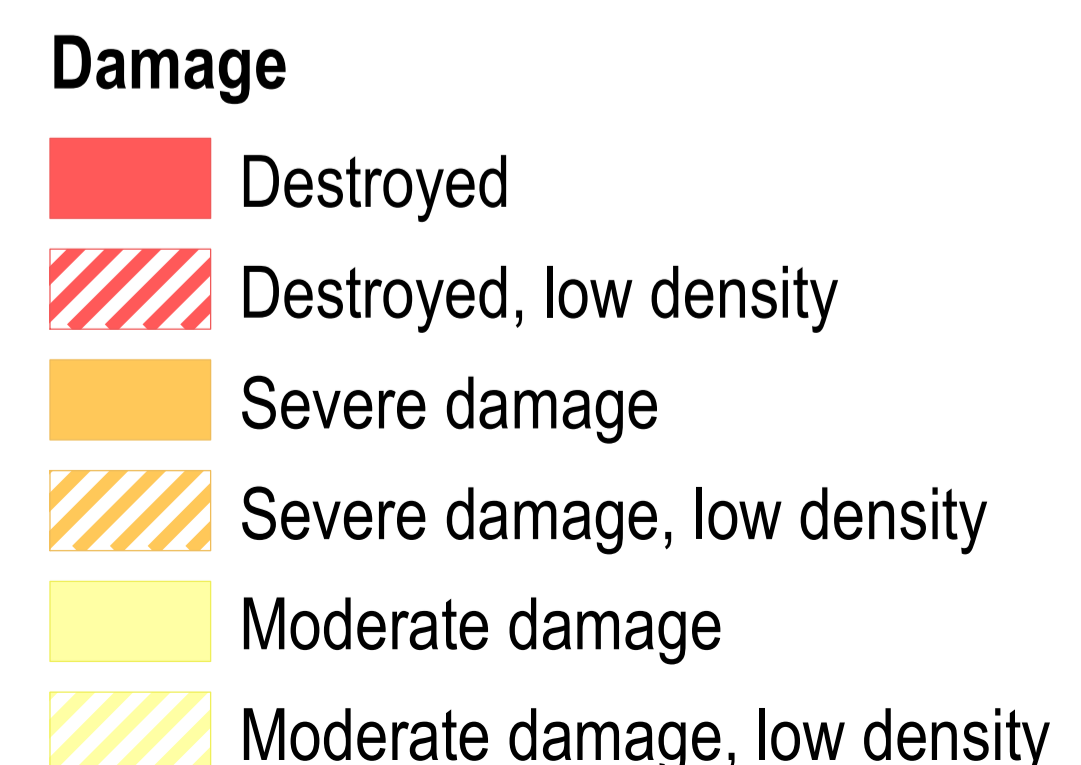
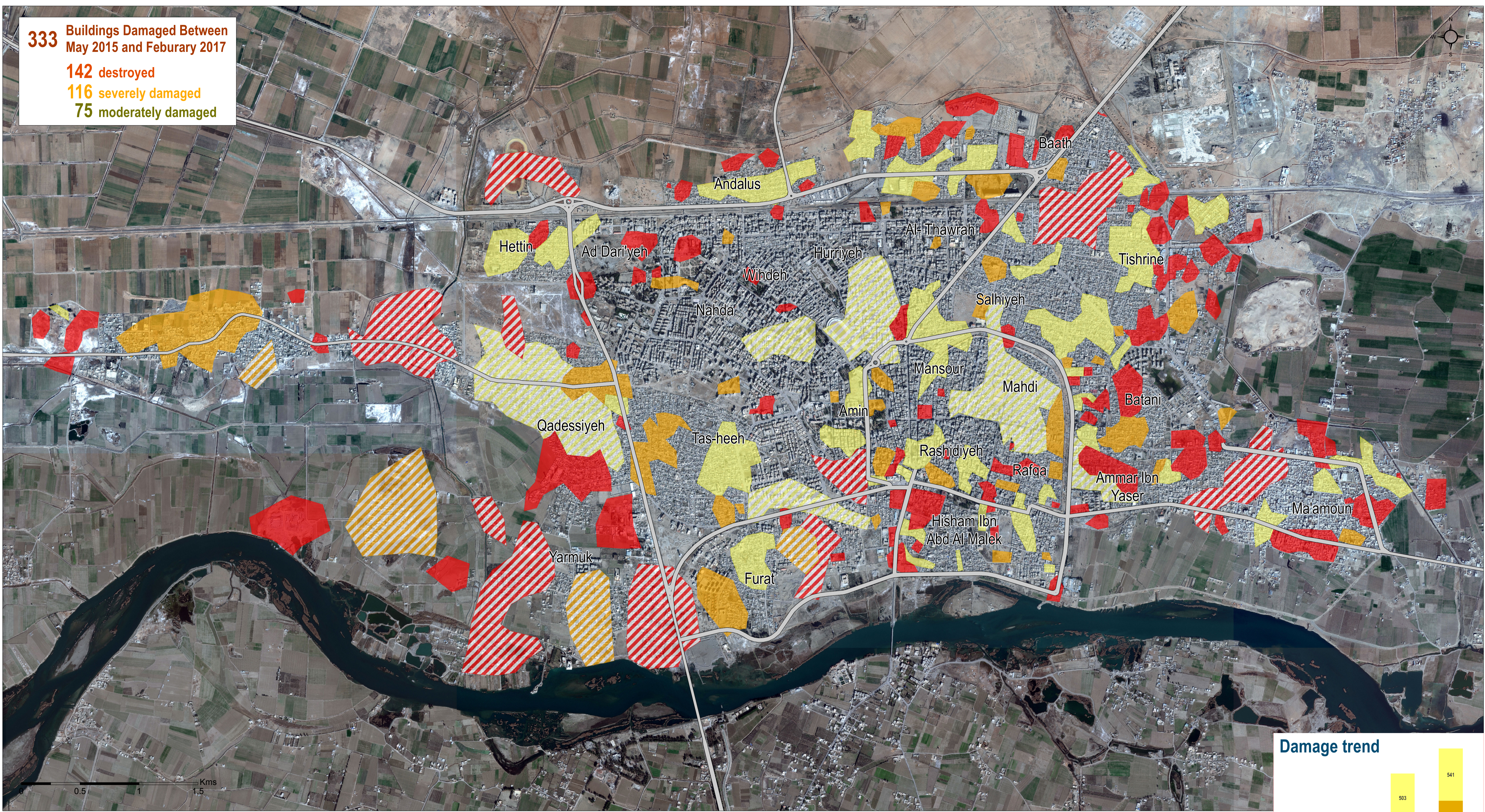


Syria - City of Raqqa

Shelter Damage Assessment as of 3 February 2017

For Authorized Distribution Only
 For Humanitarian Purposes Only
 Production Date: 22 June 2017

333 Buildings Damaged Between May 2015 and February 2017
142 destroyed
116 severely damaged
75 moderately damaged



Satellite Image: WorldView 2 from 3 February 2017
 Copyright: Digital Globe, Inc
 Source: U.S. Department of State, Humanitarian Information Unit, NextView License
 Shelter Damage Assessment Data: UNOSAT/REACH
 Projection: WGS 1984 UTM Zone 37N
 File: REACH_SYR_Damage_Assessment_Raqqa_22June17_A1
 Contact: reach.mapping@impact-initiatives.org
 Note: Data, designations and boundaries contained in this map are not warranted to be error-free and do not imply acceptance by the REACH partners, donors and associates mentioned in this map.