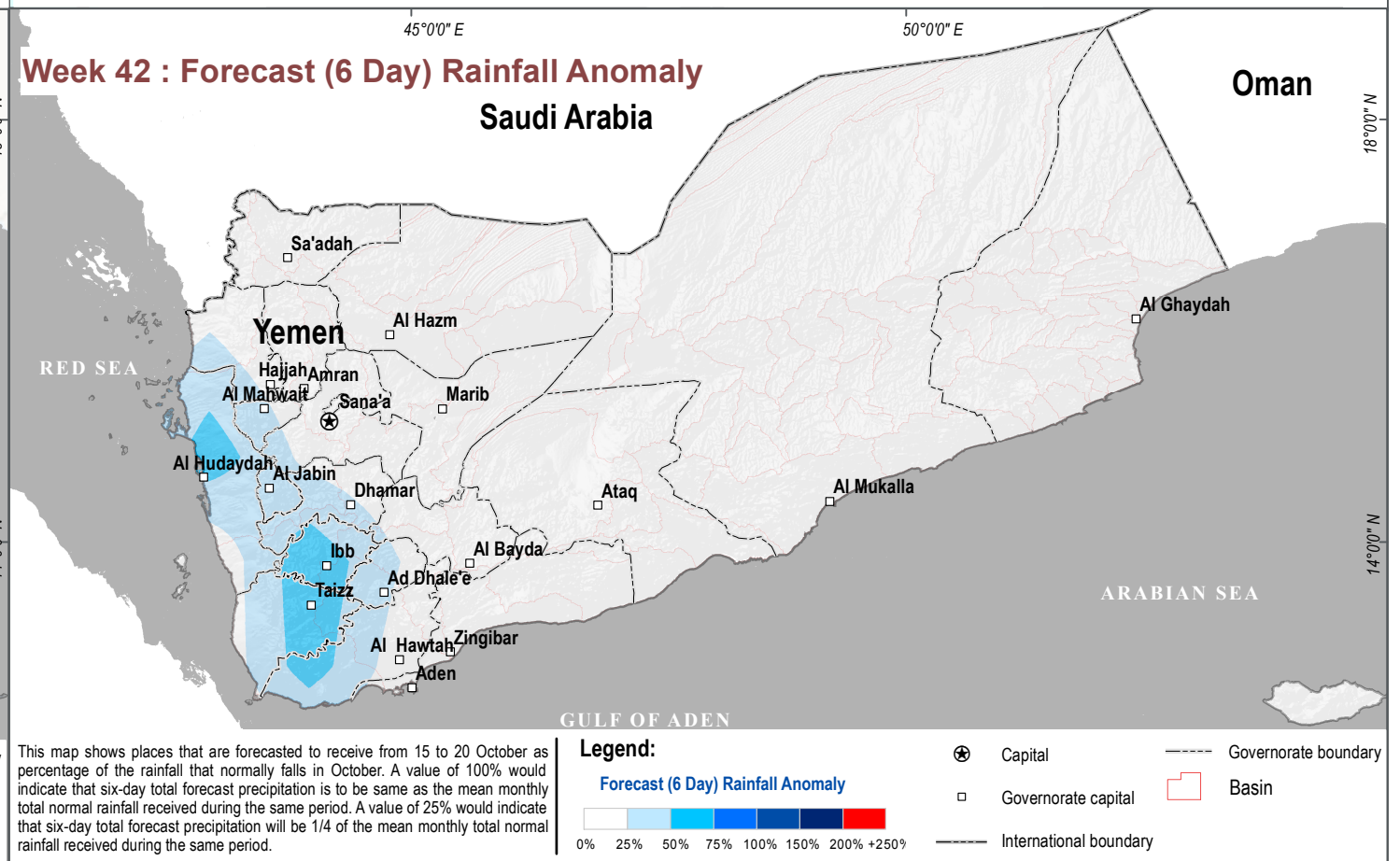
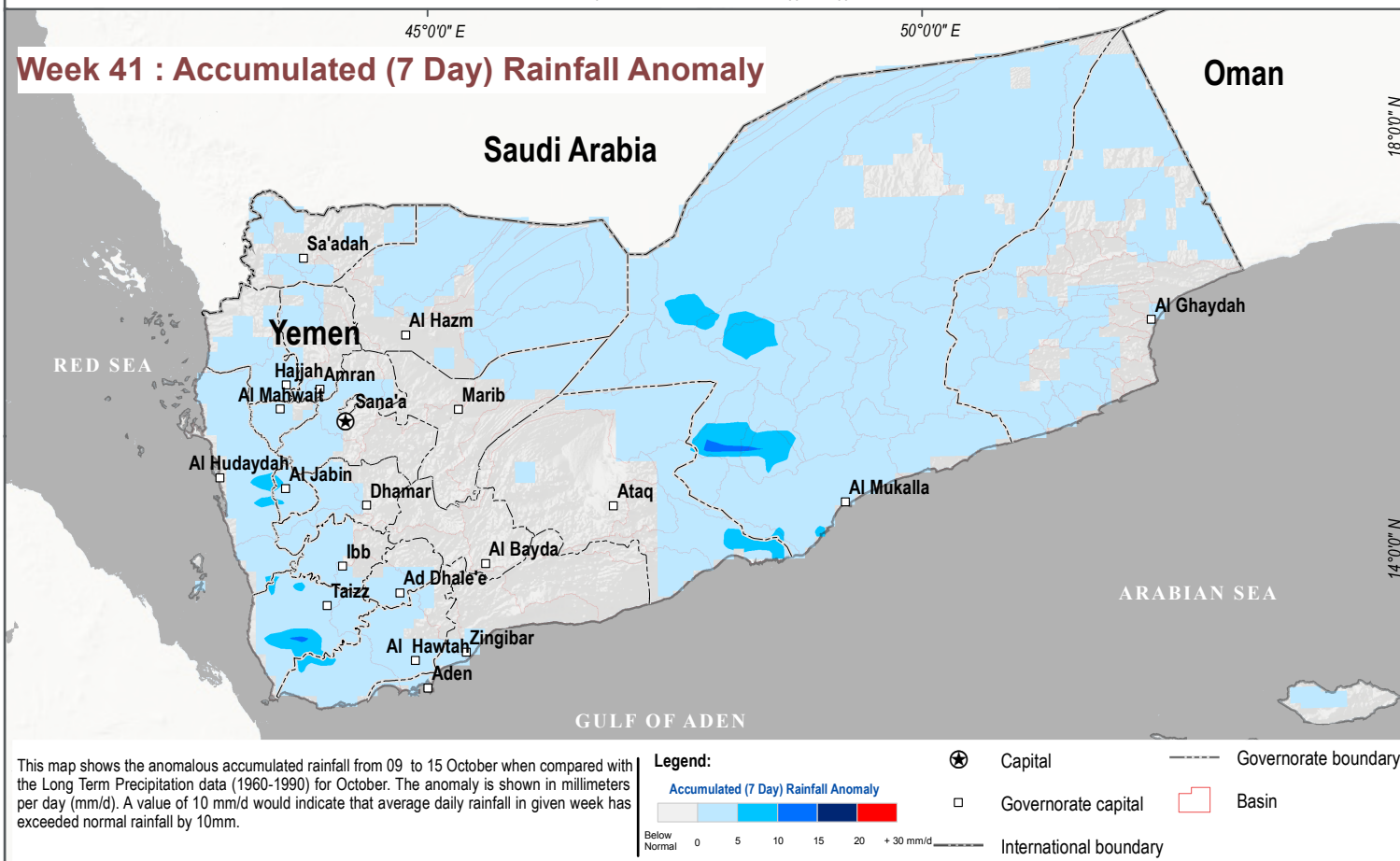
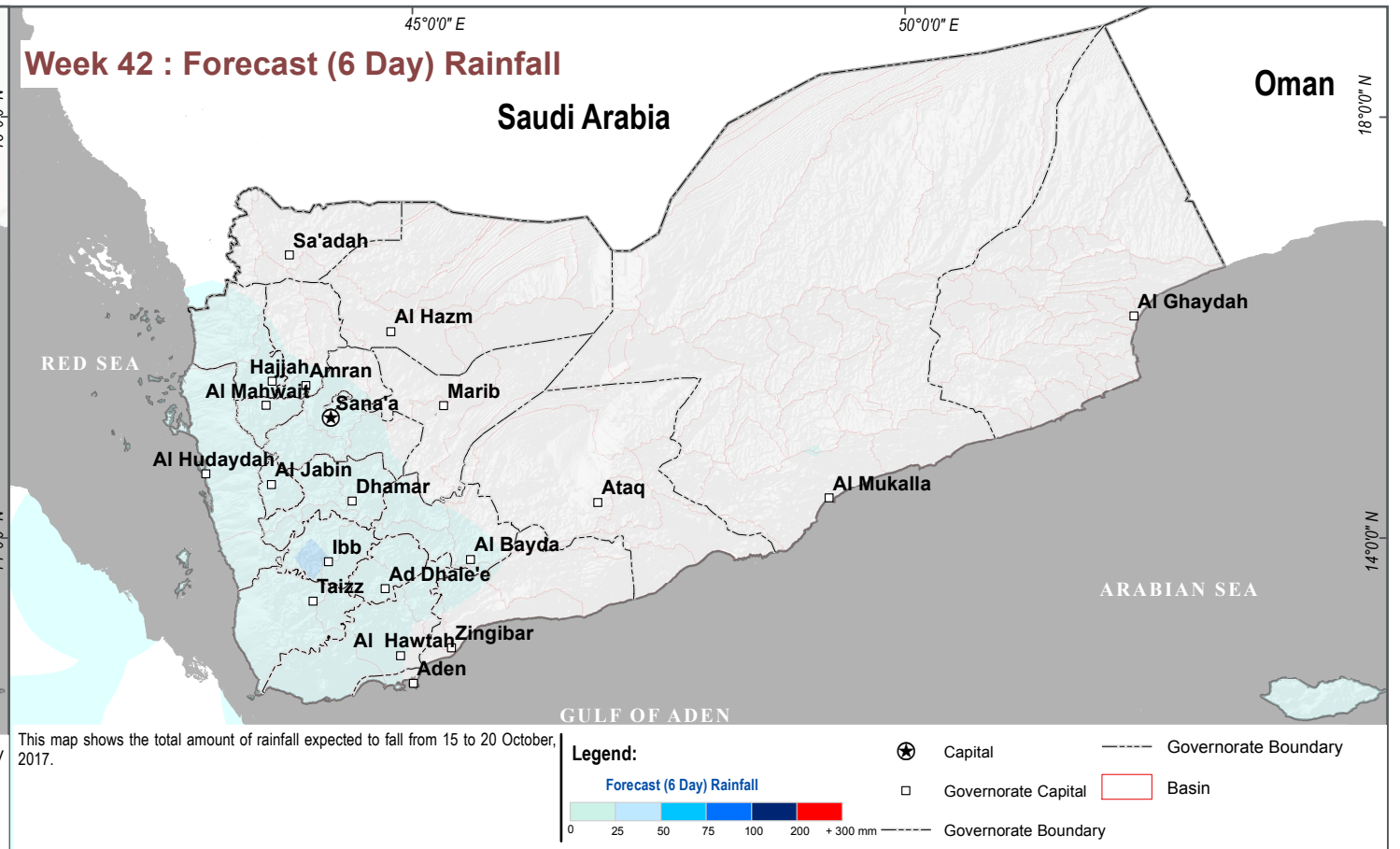
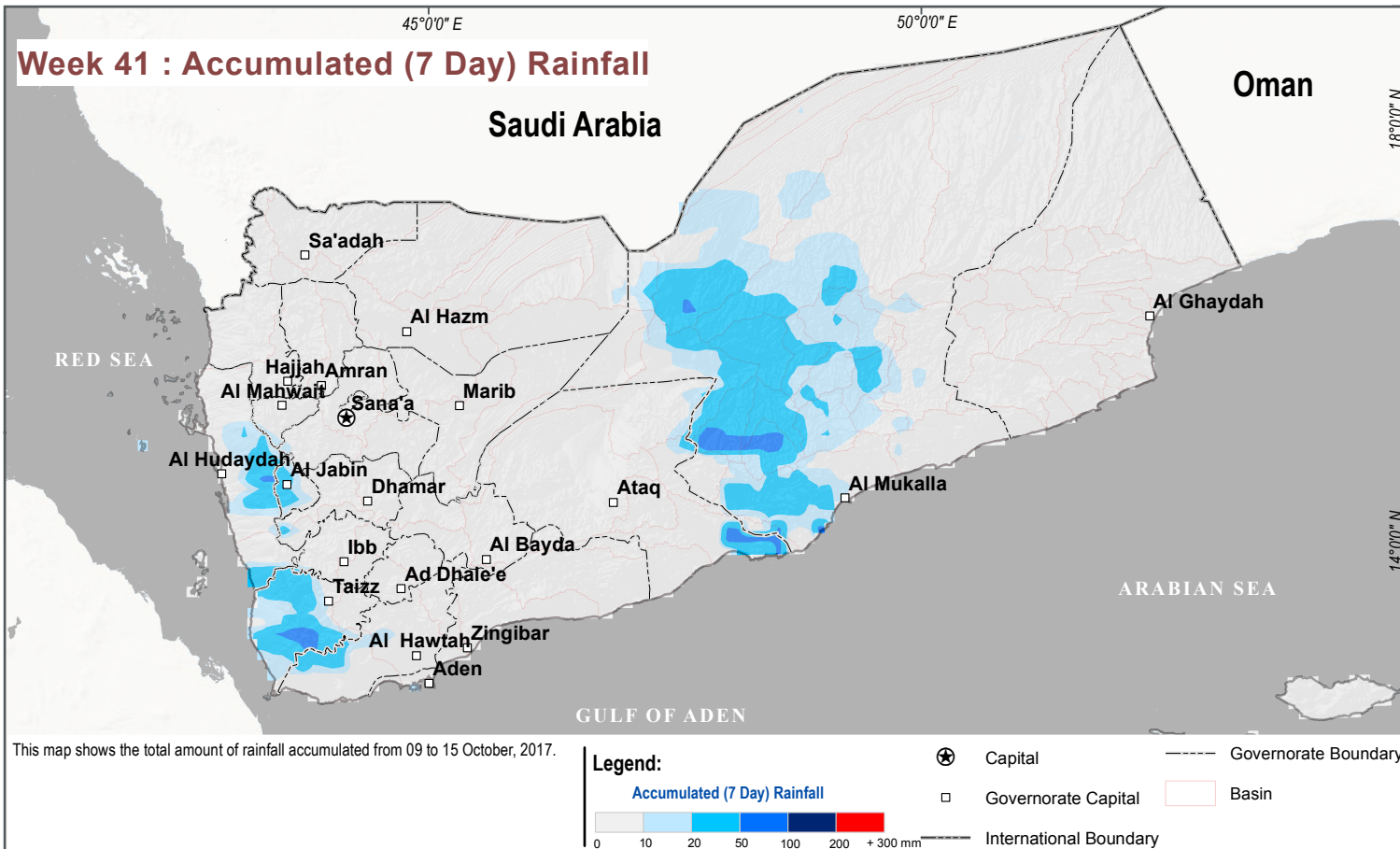


# YEMEN - Rainy Season Monitoring

## Accumulated Rainfall (Week 41: 09 - 15 October 2017) and Forecast Rainfall (Week 42: 15 - 20 October 2017)

For Humanitarian Purposes Only  
Production date : 16/10/2017



This weekly map provides an overview of accumulated rainfall in the previous week and rainfall deviation from normal and expected rainfall in the next 6 days and how these rainfall values compare to normal rainfall for this month.

Data sources: GPM (IMERG), NOAA, WorldClim, IRI, Columbia University, JRC, HDX-JRC, USGS.

Coordinate System: WGS 1984 UTM Zone 38N  
File: REACH\_YEM\_Map\_RainySeasonMonitoring\_16OCT2017\_v1  
Contact: reach.mapping@impact-initiatives.org

Note: Data, designations and boundaries contained on this map are not warranted to be error-free and do not imply acceptance by the REACH partners, associates, donors mentioned on this map.

Funded by:  
**UKaid**  
from the British people

**USAID**  
FROM THE AMERICAN PEOPLE

REACH  
Informing more effective humanitarian action

Map Scale for A3: 1:7,488,990  
0 50 100 200 300 400 Km

