



Introduction

While an estimated 2.1 million people live in displacement sites in Somalia¹, existing information on exact locations and site level vulnerabilities is sparse, and existing assessments have been ad-hoc and unharmonised, resulting in low comparability and verification.

The Detailed Site Assessment (DSA) was triggered in coordination with the Camp Coordination and Camp Management (CCCM) Cluster in order to provide the humanitarian community with up-to-date information on location of internally displaced persons (IDP) sites, the conditions and capacity of the sites and the humanitarian needs of the residents.

Target locations for assessment were selected based on needs identified by the CCCM Cluster

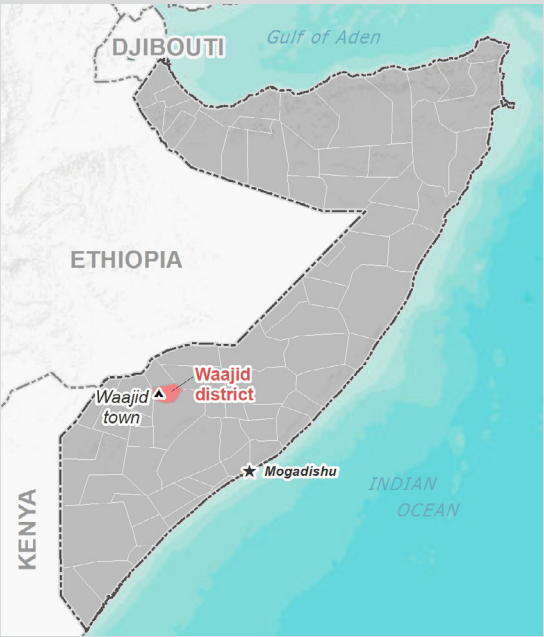
and accessibility for data collection.

A grid pattern approach² was applied during data collection to ensure that all IDP sites in the target area were identified. In each site, two key informant (KI) interviews were conducted: one with the site manager or community leader and one with a women's representative to ensure the perspectives of different groups were captured³. KI responses were aggregated to give one response per question per site.

This factsheet presents a summary of Tawakal IDP Camp Site profile along with the needs and priorities of IDPs residing in the site. As the data is captured through KIs, findings should be considered indicative only.

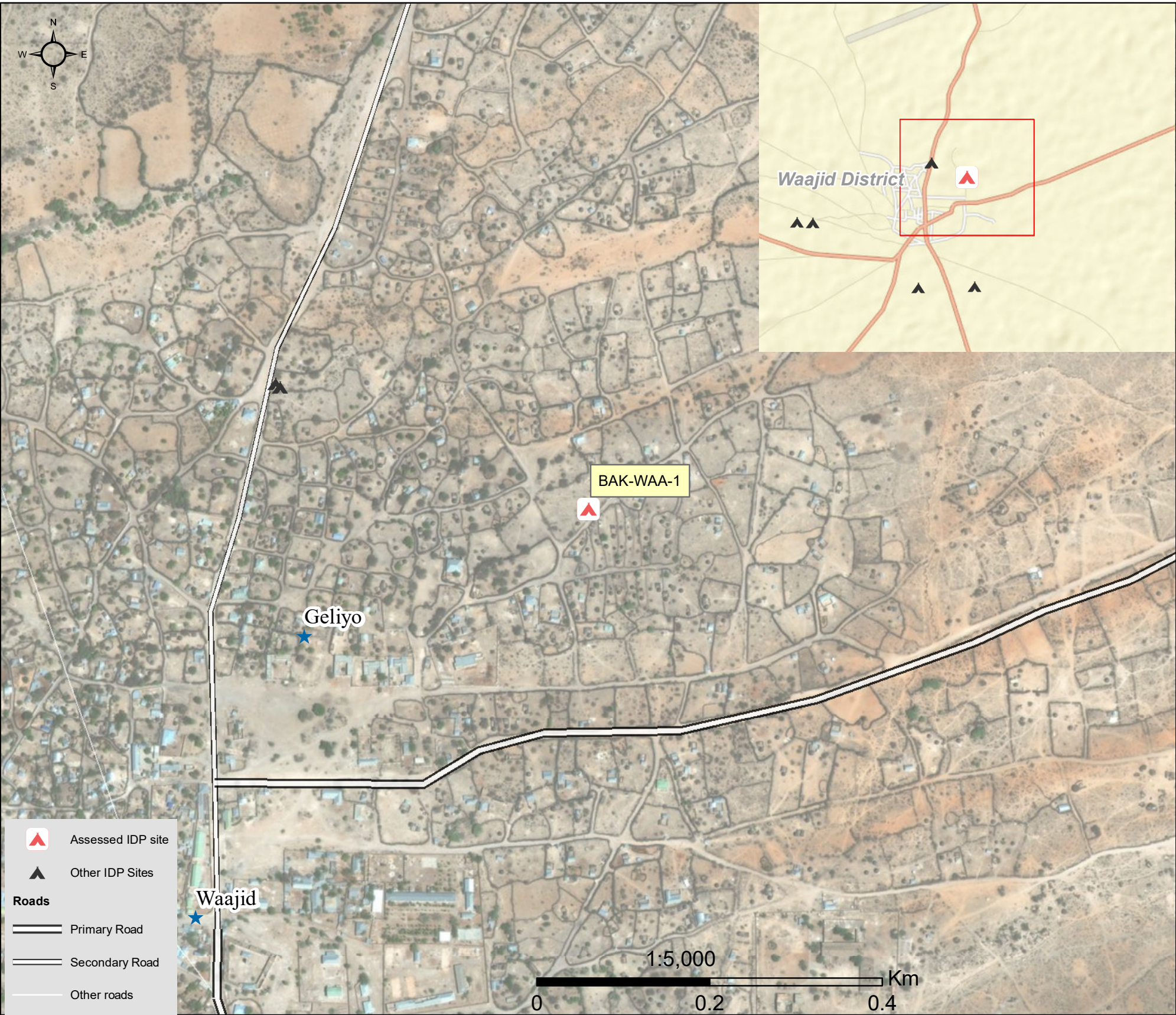
Date assessed: Feb - 2018

Location map



Assessed IDP sites in Waajid

Coordinates: Lat. 3.8135065, Long. 43.2511732



1.United Nations High Commissioner for Refugees (UNHCR): Protection & Return Monitoring Network (PRMN), September 2017

2.For each target location, the area was divided into 1km² grids. Enumerator teams then visited each grid to verify whether an IDP site was present. By visiting all grids, teams were able to determine the total number of sites in each location.

3.Where KI responses were significantly divergent, these were verified with the respective KIs with a higher reliability accorded to the response provided by the site manager or community leader.





Site Information

Settlement type	Spontaneous Site
Estimated number of individuals	500
Estimated number of households	250
Site capacity reached	Yes
Responsible management agency	Community Leader
Date when most site residents arrived	Jan-17
Site owner	Private



Protection

Number of vulnerable households:

Female-headed households	200
Child-headed households	0
Elderly individuals ⁴	50
Unaccompanied children	0
Individuals with a physical disability	2

Presence of shared community space	No
Presence of separate space for women/girls	Yes
Presence of child friendly space	No
Public lighting in the site	No
Type of landownership	Informal
Risk of eviction in next three months	No



WASH

Access to potable water	No
Number of latrines in the site:	
Latrines (mixed)	0
Latrines (male)	2
Latrines (female)	2
Access to handwashing facilities	no



Shelter and Non-Food Items (NFIs)

Most common shelter types in the site⁵:

1. Buul	
2. N/A	
3. N/A	
Electricity available in the site	No
Access to a NFI market	No
Average walking time to the nearest NFI market	N/A
Perceived safe access to NFI market	N/A



Displacement

Estimated number of households per displacement group:

IDPs	50
Host community/ non-displaced	100
IDP households arrived in the past 3 months	75

Most common areas of origin:

First area of origin	Bakool
Second area of origin	Gedo
Third area of origin	N/A



Food Security

Primary source of food	Market
Food distributions	None
Access to a food market	Yes



Health and Nutrition

Most common health issue(s) reported in the site:

1. Malaria
2. Polio
3. N/A

Access to healthcare services	No
Average walking time to the nearest health service	N/A
Women give birth in the site	Yes
Access to nutrition services	No
Average walking time to the nearest nutrition service	N/A

Access to nutrition services: No



Education

Education services available	No
Average walking time to the nearest school	N/A

Education facilities available to residents in the site⁵:

1. N/A
2. N/A
3. N/A



Communication

Three most trusted sources of information⁵:

1. Community leader
2. N/A
3. N/A

Most commonly spoken language	Somali Maay
-------------------------------	-------------

4.More than 60 years old.

5.Key informants could select multiple responses.



Introduction

While an estimated 2.1 million people live in displacement sites in Somalia¹, existing information on exact locations and site level vulnerabilities is sparse, and existing assessments have been ad-hoc and unharmonised, resulting in low comparability and verification.

The Detailed Site Assessment (DSA) was triggered in coordination with the Camp Coordination and Camp Management (CCCM) Cluster in order to provide the humanitarian community with up-to-date information on location of internally displaced persons (IDP) sites, the conditions and capacity of the sites and the humanitarian needs of the residents.

Target locations for assessment were selected based on needs identified by the CCCM Cluster

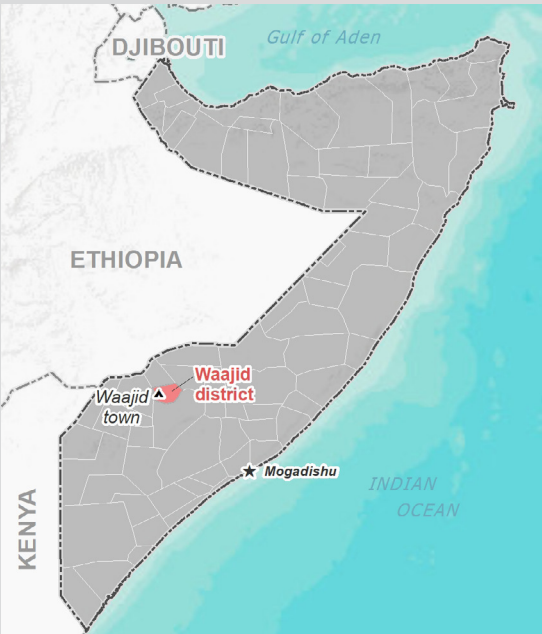
and accessibility for data collection.

A grid pattern approach² was applied during data collection to ensure that all IDP sites in the target area were identified. In each site, two key informant (KI) interviews were conducted: one with the site manager or community leader and one with a women's representative to ensure the perspectives of different groups were captured³. KI responses were aggregated to give one response per question per site.

This factsheet presents a summary of Towfiq IDP Camp Site profile along with the needs and priorities of IDPs residing in the site. As the data is captured through KIs, findings should be considered indicative only.

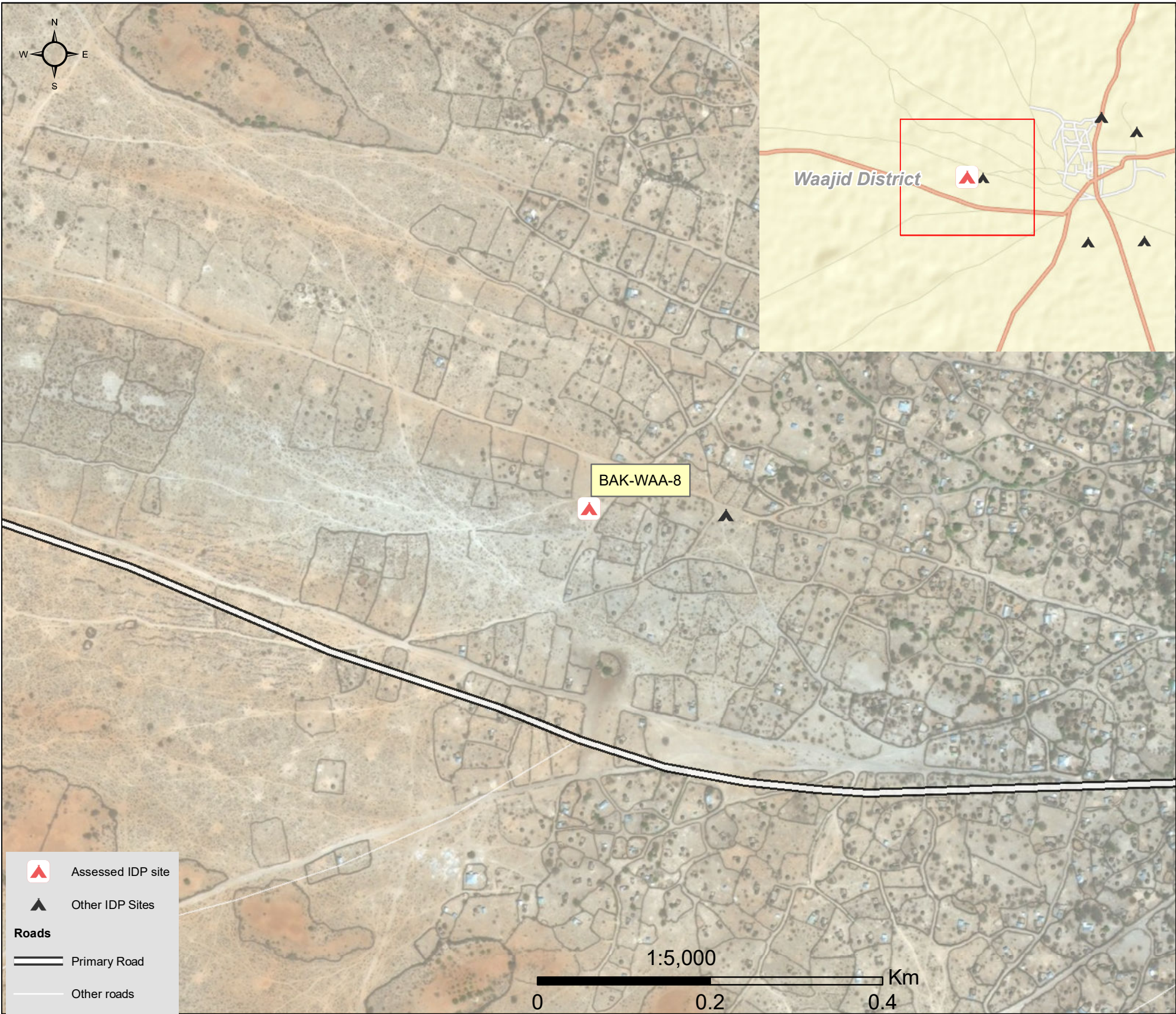
Date assessed: Feb - 2018

Location map



Assessed IDP sites in Waajid

Coordinates: Lat. 3.8093751, Long. 43.2356735



1.United Nations High Commissioner for Refugees (UNHCR): Protection & Return Monitoring Network (PRMN), September 2017

2.For each target location, the area was divided into 1km² grids. Enumerator teams then visited each grid to verify whether an IDP site was present. By visiting all grids, teams were able to determine the total number of sites in each location.

3.Where KI responses were significantly divergent, these were verified with the respective KIs with a higher reliability accorded to the response provided by the site manager or community leader.





Site Information

Settlement type	Spontaneous Site
Estimated number of individuals	3185
Estimated number of households	637
Site capacity reached	No
Responsible management agency	Community Leader
Date when most site residents arrived	Jan-18
Site owner	Private



Protection

Number of vulnerable households:	
Female-headed households	8
Child-headed households	6
Elderly individuals ⁴	0
Unaccompanied children	1
Individuals with a physical disability	7
Presence of shared community space	No
Presence of separate space for women/girls	No
Presence of child friendly space	No
Public lighting in the site	No
Type of landownership	Formal
Risk of eviction in next three months	No



WASH

Access to potable water	Yes
Number of latrines in the site:	
Latrines (mixed)	0
Latrines (male)	0
Latrines (female)	0
Access to handwashing facilities	N/A



Shelter and Non-Food Items (NFIs)

Most common shelter types in the site⁵:	
1. Buul	
2. N/A	
3. N/A	
Electricity available in the site	No
Access to a NFI market	No
Average walking time to the nearest NFI market	N/A
Perceived safe access to NFI market	N/A



Displacement

Estimated number of households per displacement group:	
IDPs	637
Host community/ non-displaced	0
IDP households arrived in the past 3 months	100
Most common areas of origin:	
First area of origin	Bakool
Second area of origin	Gedo
Third area of origin	N/A



Food Security

Primary source of food	Market
Food distributions	None
Access to a food market	No



Health and Nutrition

Most common health issue(s) reported in the site:	
1. Malaria	
2. N/A	
3. N/A	
Access to healthcare services	No
Average walking time to the nearest health service	N/A
Women give birth in the site	Yes
Access to nutrition services	No
Average walking time to the nearest nutrition service	N/A
Access to nutrition services:	No



Education

Education services available	No
Average walking time to the nearest school	N/A
Education facilities available to residents in the site⁵:	
1. N/A	
2. N/A	
3. N/A	



Communication

Three most trusted sources of information⁵:	
1. Friends/ family	
2. Religious leader	
3. Community leader	
Most commonly spoken language	Somali Maay

4.More than 60 years old.

5.Key informants could select multiple responses.





Introduction

While an estimated 2.1 million people live in displacement sites in Somalia¹, existing information on exact locations and site level vulnerabilities is sparse, and existing assessments have been ad-hoc and unharmonised, resulting in low comparability and verification.

The Detailed Site Assessment (DSA) was triggered in coordination with the Camp Coordination and Camp Management (CCCM) Cluster in order to provide the humanitarian community with up-to-date information on location of internally displaced persons (IDP) sites, the conditions and capacity of the sites and the humanitarian needs of the residents.

Target locations for assessment were selected based on needs identified by the CCCM Cluster

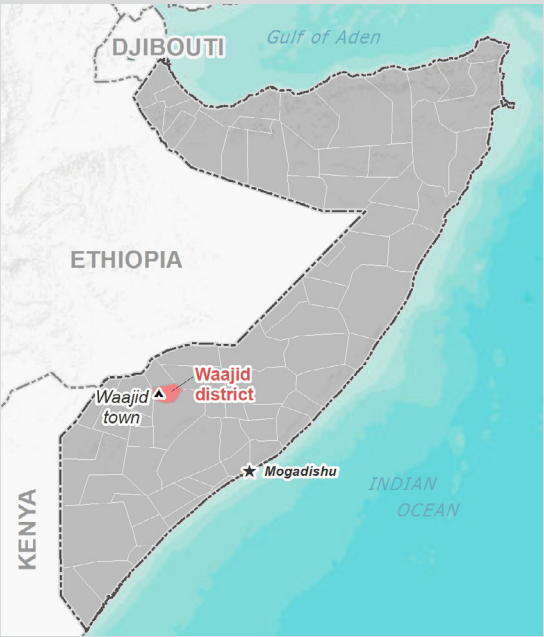
and accessibility for data collection.

A grid pattern approach² was applied during data collection to ensure that all IDP sites in the target area were identified. In each site, two key informant (KI) interviews were conducted: one with the site manager or community leader and one with a women's representative to ensure the perspectives of different groups were captured³. KI responses were aggregated to give one response per question per site.

This factsheet presents a summary of Elbon IDP Camp Site profile along with the needs and priorities of IDPs residing in the site. As the data is captured through KIs, findings should be considered indicative only.

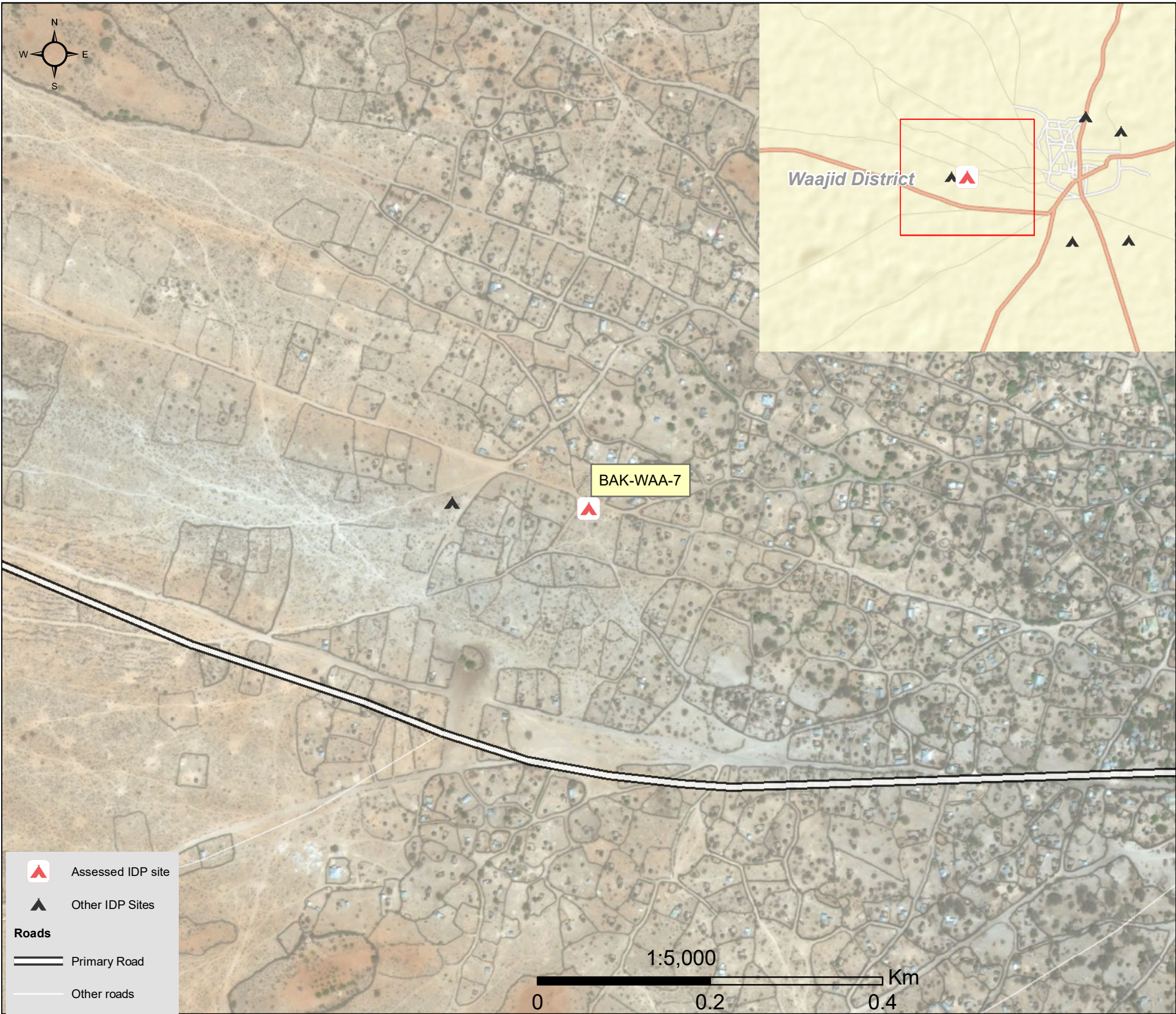
Date assessed: Feb - 2018

Location map



Assessed IDP sites in Waajid

Coordinates: Lat. 3.8093114, Long. 43.2370982



1.United Nations High Commissioner for Refugees (UNHCR): Protection & Return Monitoring Network (PRMN), September 2017

2.For each target location, the area was divided into 1km² grids. Enumerator teams then visited each grid to verify whether an IDP site was present. By visiting all grids, teams were able to determine the total number of sites in each location.

3.Where KI responses were significantly divergent, these were verified with the respective KIs with a higher reliability accorded to the response provided by the site manager or community leader.





Site Information

Settlement type	Spontaneous Site
Estimated number of individuals	5340
Estimated number of households	890
Site capacity reached	No
Responsible management agency	Community Leader
Date when most site residents arrived	Mar-17
Site owner	Private



Protection

Number of vulnerable households:

Female-headed households	25
Child-headed households	2
Elderly individuals ⁴	1340
Unaccompanied children	0
Individuals with a physical disability	3
Presence of shared community space	No
Presence of separate space for women/girls	No
Presence of child friendly space	No
Public lighting in the site	No
Type of landownership	Informal
Risk of eviction in next three months	No



WASH

Access to potable water	Yes
Number of latrines in the site:	
Latrines (mixed)	0
Latrines (male)	1
Latrines (female)	1
Access to handwashing facilities	yes



Shelter and Non-Food Items (NFIs)

Most common shelter types in the site⁵:

1. Buul	
2. N/A	
3. N/A	
Electricity available in the site	No
Access to a NFI market	No
Average walking time to the nearest NFI market	N/A
Perceived safe access to NFI market	N/A



Displacement

Estimated number of households per displacement group:

IDPs	640
Host community/ non-displaced	0
IDP households arrived in the past 3 months	500

Most common areas of origin:

First area of origin	Bakool
Second area of origin	N/A
Third area of origin	N/A



Food Security

Primary source of food	Market
Food distributions	None
Access to a food market	No



Health and Nutrition

Most common health issue(s) reported in the site:

1. Malaria
2. Other
3. N/A

Access to healthcare services	No
Average walking time to the nearest health service	N/A
Women give birth in the site	Yes
Access to nutrition services	Yes
Average walking time to the nearest nutrition service	60 minutes

Access to nutrition services: Yes



Education

Education services available	No
Average walking time to the nearest school	N/A

Education facilities available to residents in the site⁵:

1. N/A
2. N/A
3. N/A



Communication

Three most trusted sources of information⁵:

1. Friends/ family
2. Religious leader
3. Military official

Most commonly spoken language	Somali Maay
-------------------------------	-------------

4.More than 60 years old.

5.Key informants could select multiple responses.



Introduction

While an estimated 2.1 million people live in displacement sites in Somalia¹, existing information on exact locations and site level vulnerabilities is sparse, and existing assessments have been ad-hoc and unharmonised, resulting in low comparability and verification.

The Detailed Site Assessment (DSA) was triggered in coordination with the Camp Coordination and Camp Management (CCCM) Cluster in order to provide the humanitarian community with up-to-date information on location of internally displaced persons (IDP) sites, the conditions and capacity of the sites and the humanitarian needs of the residents.

Target locations for assessment were selected based on needs identified by the CCCM Cluster

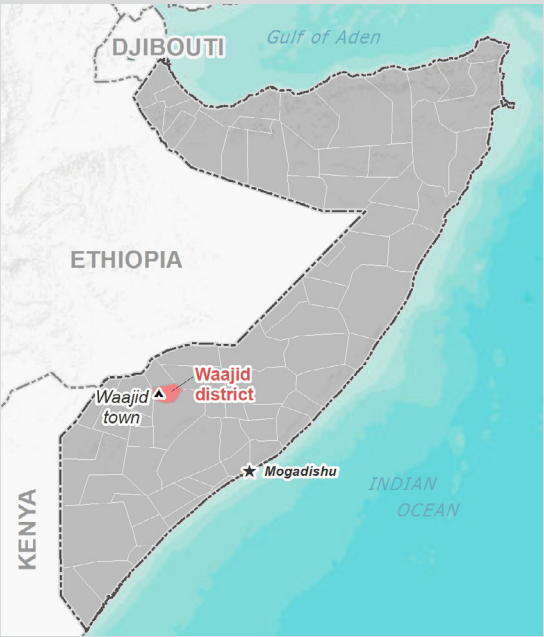
and accessibility for data collection.

A grid pattern approach² was applied during data collection to ensure that all IDP sites in the target area were identified. In each site, two key informant (KI) interviews were conducted: one with the site manager or community leader and one with a women's representative to ensure the perspectives of different groups were captured³. KI responses were aggregated to give one response per question per site.

This factsheet presents a summary of Alla -A minutes IDPs Camp Site profile along with the needs and priorities of IDPs residing in the site. As the data is captured through KIs, findings should be considered indicative only.

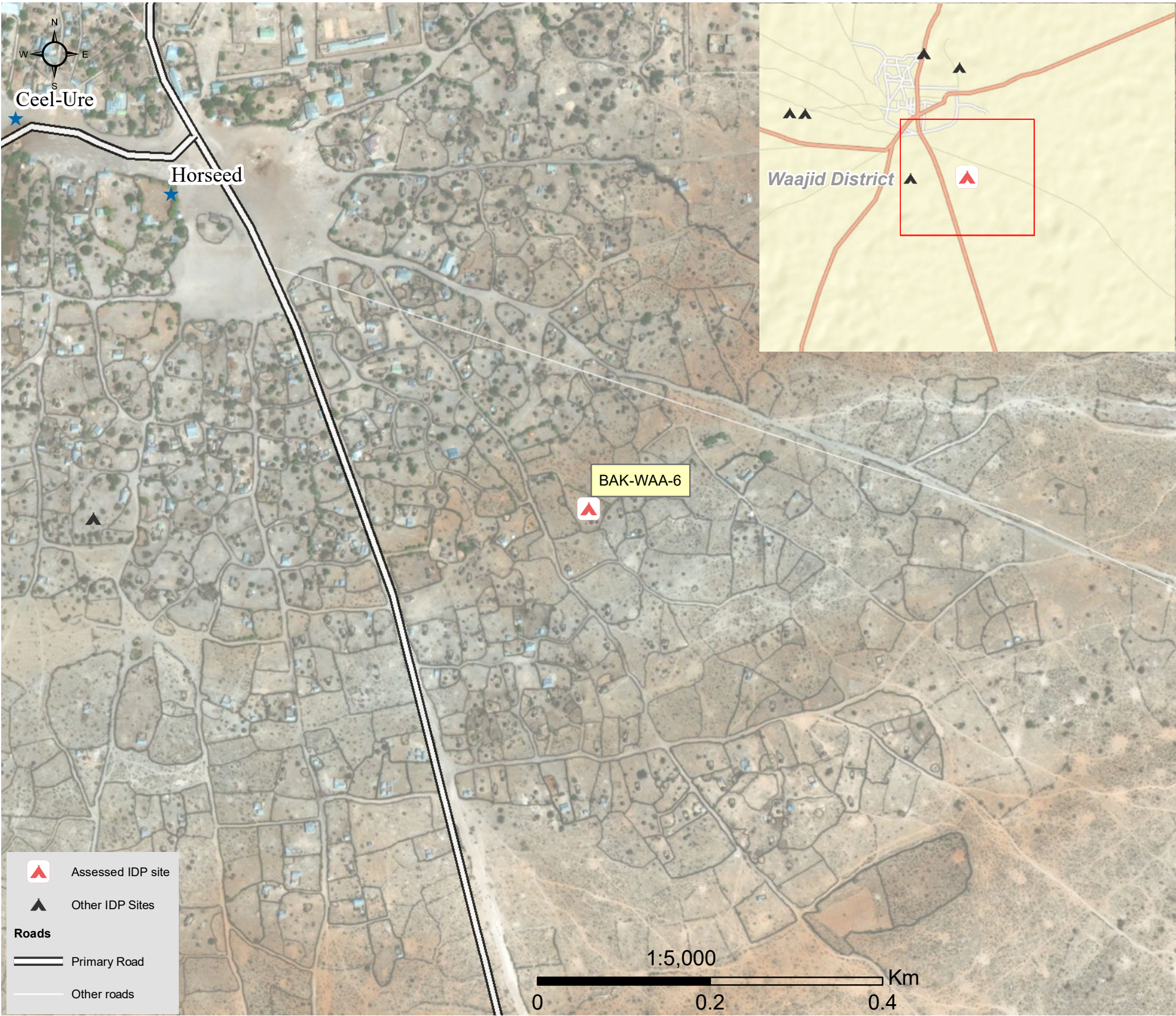
Date assessed: Feb - 2018

Location map



Assessed IDP sites in Waajid

Coordinates: Lat. 3.8035265, Long. 43.2518798



1.United Nations High Commissioner for Refugees (UNHCR): Protection & Return Monitoring Network (PRMN), September 2017

2.For each target location, the area was divided into 1km² grids. Enumerator teams then visited each grid to verify whether an IDP site was present. By visiting all grids, teams were able to determine the total number of sites in each location.

3.Where KI responses were significantly divergent, these were verified with the respective KIs with a higher reliability accorded to the response provided by the site manager or community leader.





Site Information

Settlement type	Spontaneous Site
Estimated number of individuals	300
Estimated number of households	70
Site capacity reached	Yes
Responsible management agency	Community Leader
Date when most site residents arrived	Apr-17
Site owner	Private



Protection

Number of vulnerable households:

Female-headed households	10
Child-headed households	3
Elderly individuals ⁴	0
Unaccompanied children	1
Individuals with a physical disability	5
Presence of shared community space	No
Presence of separate space for women/girls	No
Presence of child friendly space	No
Public lighting in the site	No
Type of landownership	None
Risk of eviction in next three months	No



WASH

Access to potable water	Yes
Number of latrines in the site:	
Latrines (mixed)	0
Latrines (male)	1
Latrines (female)	1
Access to handwashing facilities	no



Shelter and Non-Food Items (NFIs)

Most common shelter types in the site⁵:

1. Buul	
2. N/A	
3. N/A	
Electricity available in the site	No
Access to a NFI market	No
Average walking time to the nearest NFI market	N/A
Perceived safe access to NFI market	N/A



Displacement

Estimated number of households per displacement group:

IDPs	70
Host community/ non-displaced	0
IDP households arrived in the past 3 months	5

Most common areas of origin:

First area of origin	Bakool
Second area of origin	Bay
Third area of origin	N/A



Food Security

Primary source of food	Market
Food distributions	None
Access to a food market	Yes



Health and Nutrition

Most common health issue(s) reported in the site:

1. Malaria
2. Other
3. N/A

Access to healthcare services	No
Average walking time to the nearest health service	N/A
Women give birth in the site	Yes
Access to nutrition services	No
Average walking time to the nearest nutrition service	N/A

Access to nutrition services: No



Education

Education services available	No
Average walking time to the nearest school	N/A

Education facilities available to residents in the site⁵:

1. N/A
2. N/A
3. N/A



Communication

Three most trusted sources of information⁵:

1. Friends/ family
2. Religious leader
3. Community leader

Most commonly spoken language	Somali Maay
-------------------------------	-------------

4.More than 60 years old.

5.Key informants could select multiple responses.



Introduction

While an estimated 2.1 million people live in displacement sites in Somalia¹, existing information on exact locations and site level vulnerabilities is sparse, and existing assessments have been ad-hoc and unharmonised, resulting in low comparability and verification.

The Detailed Site Assessment (DSA) was triggered in coordination with the Camp Coordination and Camp Management (CCCM) Cluster in order to provide the humanitarian community with up-to-date information on location of internally displaced persons (IDP) sites, the conditions and capacity of the sites and the humanitarian needs of the residents.

Target locations for assessment were selected based on needs identified by the CCCM Cluster

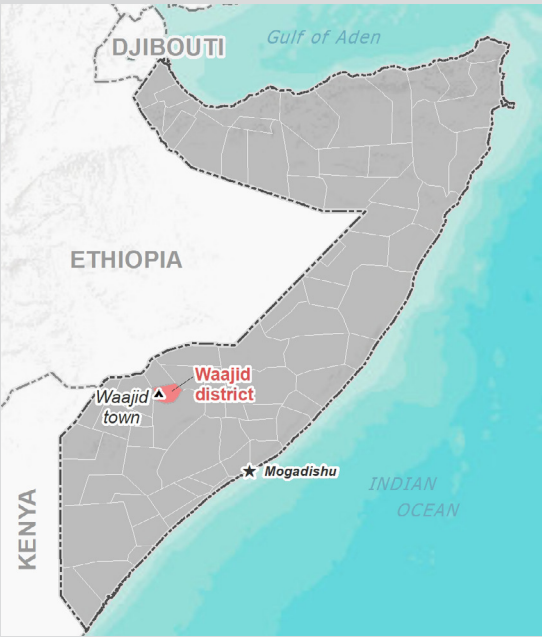
and accessibility for data collection.

A grid pattern approach² was applied during data collection to ensure that all IDP sites in the target area were identified. In each site, two key informant (KI) interviews were conducted: one with the site manager or community leader and one with a women's representative to ensure the perspectives of different groups were captured³. KI responses were aggregated to give one response per question per site.

This factsheet presents a summary of AI- A minutes Site profile along with the needs and priorities of IDPs residing in the site. As the data is captured through KIs, findings should be considered indicative only.

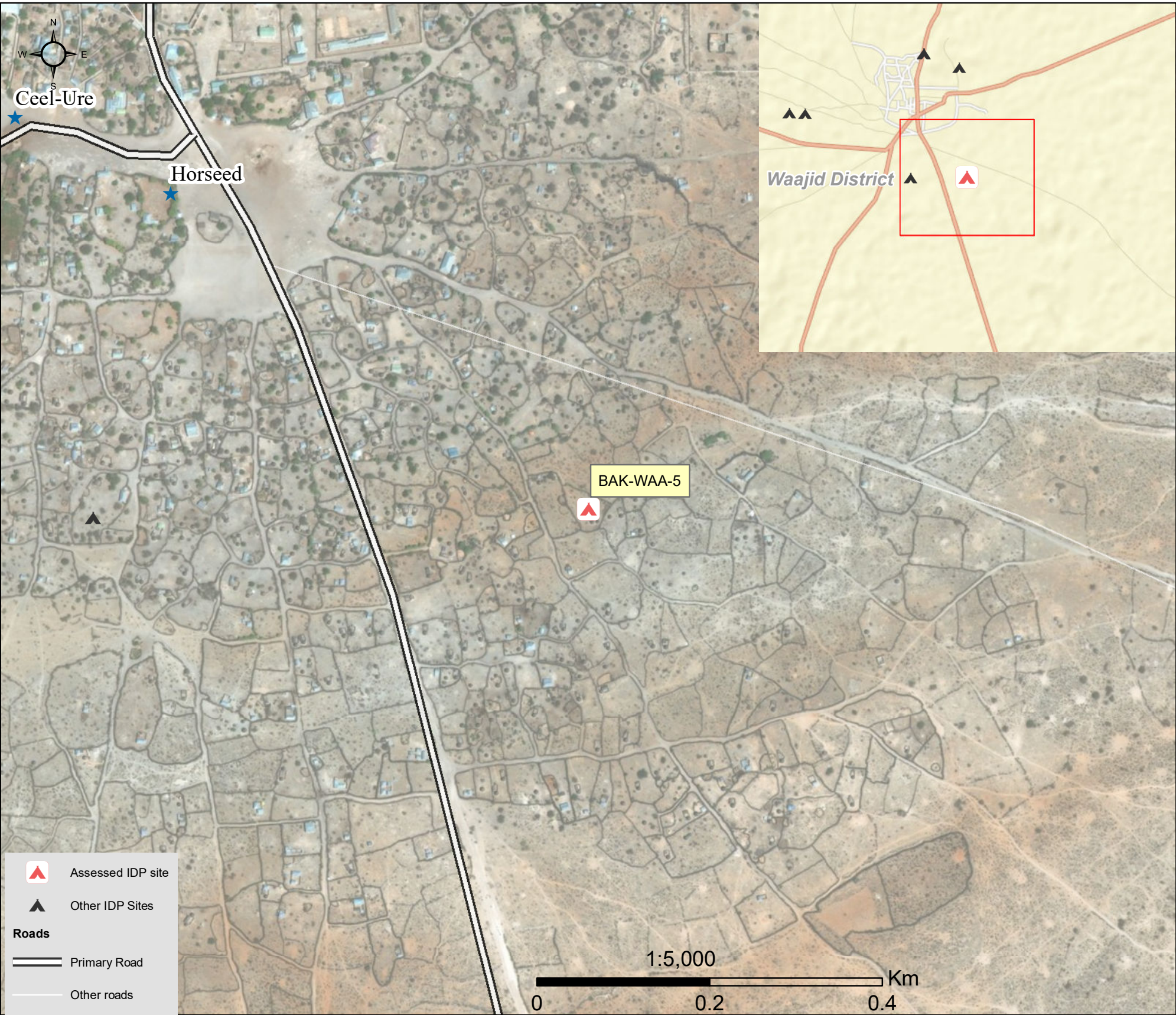
Date assessed: Feb - 2018

Location map



Assessed IDP sites in Waajid

Coordinates: Lat. 3.8035153, Long. 43.2518715



1.United Nations High Commissioner for Refugees (UNHCR): Protection & Return Monitoring Network (PRMN), September 2017

2.For each target location, the area was divided into 1km² grids. Enumerator teams then visited each grid to verify whether an IDP site was present. By visiting all grids, teams were able to determine the total number of sites in each location.

3.Where KI responses were significantly divergent, these were verified with the respective KIs with a higher reliability accorded to the response provided by the site manager or community leader.





Site Information

Settlement type	Spontaneous Site
Estimated number of individuals	350
Estimated number of households	70
Site capacity reached	Yes
Responsible management agency	Community Leader
Date when most site residents arrived	Mar-17
Site owner	Private



Protection

Number of vulnerable households:

Female-headed households	10
Child-headed households	3
Elderly individuals ⁴	0
Unaccompanied children	1
Individuals with a physical disability	5

Presence of shared community space	Yes
Presence of separate space for women/girls	No
Presence of child friendly space	No
Public lighting in the site	No
Type of landownership	None
Risk of eviction in next three months	No



WASH

Access to potable water	Yes
Number of latrines in the site:	
Latrines (mixed)	0
Latrines (male)	1
Latrines (female)	1
Access to handwashing facilities	no



Shelter and Non-Food Items (NFIs)

Most common shelter types in the site⁵:

1. Buul
2. N/A
3. N/A

Electricity available in the site	No
Access to a NFI market	No
Average walking time to the nearest NFI market	N/A
Perceived safe access to NFI market	N/A



Displacement

Estimated number of households per displacement group:

IDPs	70
Host community/ non-displaced	0
IDP households arrived in the past 3 months	20

Most common areas of origin:

First area of origin	Bakool
Second area of origin	Gedo
Third area of origin	Bay



Food Security

Primary source of food	Market
Food distributions	None
Access to a food market	Yes



Health and Nutrition

Most common health issue(s) reported in the site:

1. Malaria
2. N/A
3. N/A

Access to healthcare services	No
Average walking time to the nearest health service	N/A
Women give birth in the site	Yes
Access to nutrition services	No
Average walking time to the nearest nutrition service	N/A

Access to nutrition services: No



Education

Education services available	No
Average walking time to the nearest school	N/A

Education facilities available to residents in the site⁵:

1. N/A
2. N/A
3. N/A



Communication

Three most trusted sources of information⁵:

1. Religious leader
2. Community leader
3. N/A

Most commonly spoken language	Somali Maay
-------------------------------	-------------

4.More than 60 years old.

5.Key informants could select multiple responses.



Introduction

While an estimated 2.1 million people live in displacement sites in Somalia¹, existing information on exact locations and site level vulnerabilities is sparse, and existing assessments have been ad-hoc and unharmonised, resulting in low comparability and verification.

The Detailed Site Assessment (DSA) was triggered in coordination with the Camp Coordination and Camp Management (CCCM) Cluster in order to provide the humanitarian community with up-to-date information on location of internally displaced persons (IDP) sites, the conditions and capacity of the sites and the humanitarian needs of the residents.

Target locations for assessment were selected based on needs identified by the CCCM Cluster

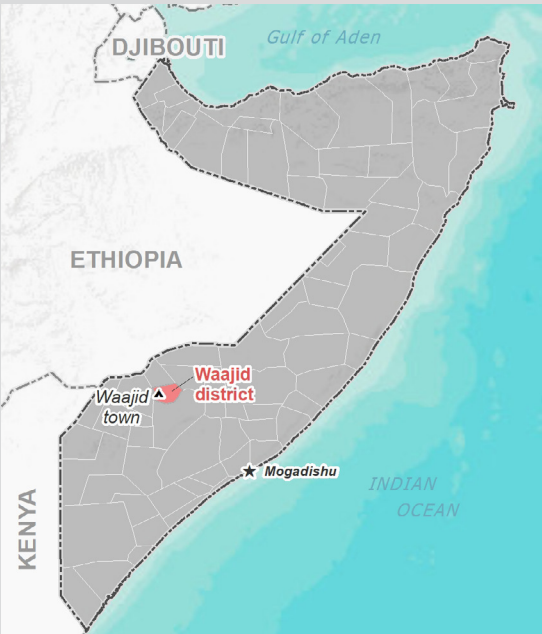
and accessibility for data collection.

A grid pattern approach² was applied during data collection to ensure that all IDP sites in the target area were identified. In each site, two key informant (KI) interviews were conducted: one with the site manager or community leader and one with a women's representative to ensure the perspectives of different groups were captured³. KI responses were aggregated to give one response per question per site.

This factsheet presents a summary of Burdhuxunle Site profile along with the needs and priorities of IDPs residing in the site. As the data is captured through KIs, findings should be considered indicative only.

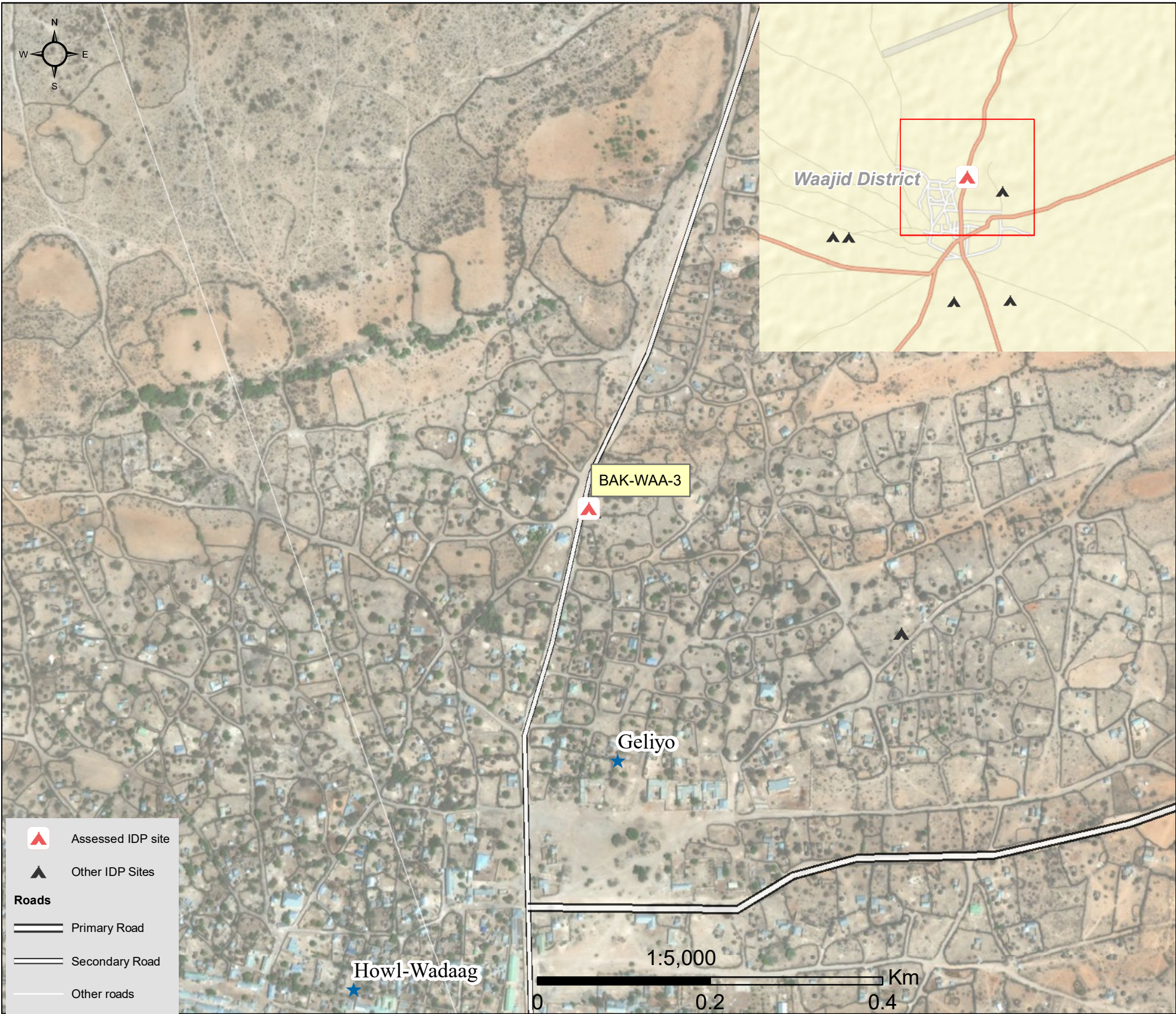
Date assessed: Feb - 2018

Location map



Assessed IDP sites in Waajid

Coordinates: Lat. 3.8148104, Long. 43.2479182



1.United Nations High Commissioner for Refugees (UNHCR): Protection & Return Monitoring Network (PRMN), September 2017

2.For each target location, the area was divided into 1km² grids. Enumerator teams then visited each grid to verify whether an IDP site was present. By visiting all grids, teams were able to determine the total number of sites in each location.

3.Where KI responses were significantly divergent, these were verified with the respective KIs with a higher reliability accorded to the response provided by the site manager or community leader.





Site Information

Settlement type	Spontaneous Site
Estimated number of individuals	900
Estimated number of households	300
Site capacity reached	Yes
Responsible management agency	Community Leader
Date when most site residents arrived	Oct-17
Site owner	Private



Protection

Number of vulnerable households:	
Female-headed households	20
Child-headed households	4
Elderly individuals ⁴	0
Unaccompanied children	2
Individuals with a physical disability	6
Presence of shared community space	No
Presence of separate space for women/girls	No
Presence of child friendly space	No
Public lighting in the site	No
Type of landownership	None
Risk of eviction in next three months	No



WASH

Access to potable water	Yes
Number of latrines in the site:	
Latrines (mixed)	0
Latrines (male)	1
Latrines (female)	2
Access to handwashing facilities	no



Shelter and Non-Food Items (NFIs)

Most common shelter types in the site⁵:	
1. Buul	
2. N/A	
3. N/A	
Electricity available in the site	No
Access to a NFI market	No
Average walking time to the nearest NFI market	N/A
Perceived safe access to NFI market	N/A



Displacement

Estimated number of households per displacement group:	
IDPs	300
Host community/ non-displaced	0
IDP households arrived in the past 3 months	150
Most common areas of origin:	
First area of origin	Bakool
Second area of origin	Bay
Third area of origin	Gedo



Food Security

Primary source of food	Market
Food distributions	None
Access to a food market	Yes



Health and Nutrition

Most common health issue(s) reported in the site:	
1. Malaria	
2. Other	
3. N/A	
Access to healthcare services	No
Average walking time to the nearest health service	N/A
Women give birth in the site	Yes
Access to nutrition services	No
Average walking time to the nearest nutrition service	N/A
Access to nutrition services:	No



Education

Education services available	No
Average walking time to the nearest school	N/A
Education facilities available to residents in the site⁵:	
1. N/A	
2. N/A	
3. N/A	



Communication

Three most trusted sources of information⁵:	
1. Friends/ family	
2. Community leader	
3. N/A	
Most commonly spoken language	Somali Maay

4.More than 60 years old.

5.Key informants could select multiple responses.



Introduction

While an estimated 2.1 million people live in displacement sites in Somalia¹, existing information on exact locations and site level vulnerabilities is sparse, and existing assessments have been ad-hoc and unharmonised, resulting in low comparability and verification.

The Detailed Site Assessment (DSA) was triggered in coordination with the Camp Coordination and Camp Management (CCCM) Cluster in order to provide the humanitarian community with up-to-date information on location of internally displaced persons (IDP) sites, the conditions and capacity of the sites and the humanitarian needs of the residents.

Target locations for assessment were selected based on needs identified by the CCCM Cluster

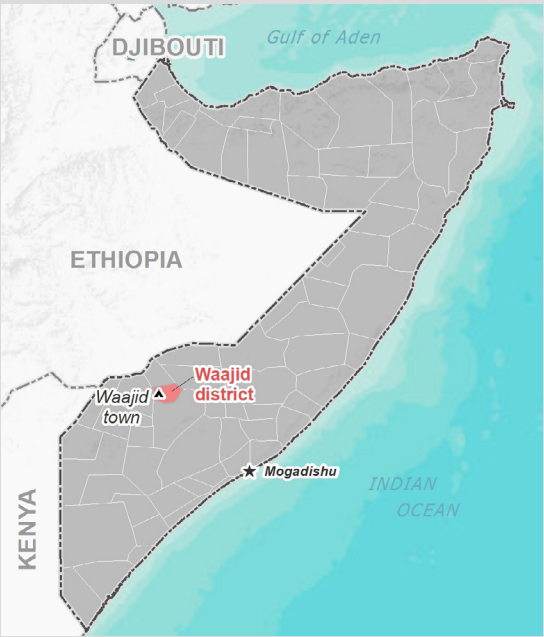
and accessibility for data collection.

A grid pattern approach² was applied during data collection to ensure that all IDP sites in the target area were identified. In each site, two key informant (KI) interviews were conducted: one with the site manager or community leader and one with a women's representative to ensure the perspectives of different groups were captured³. KI responses were aggregated to give one response per question per site.

This factsheet presents a summary of Kulmiye IDps Camp Site profile along with the needs and priorities of IDPs residing in the site. As the data is captured through KIs, findings should be considered indicative only.

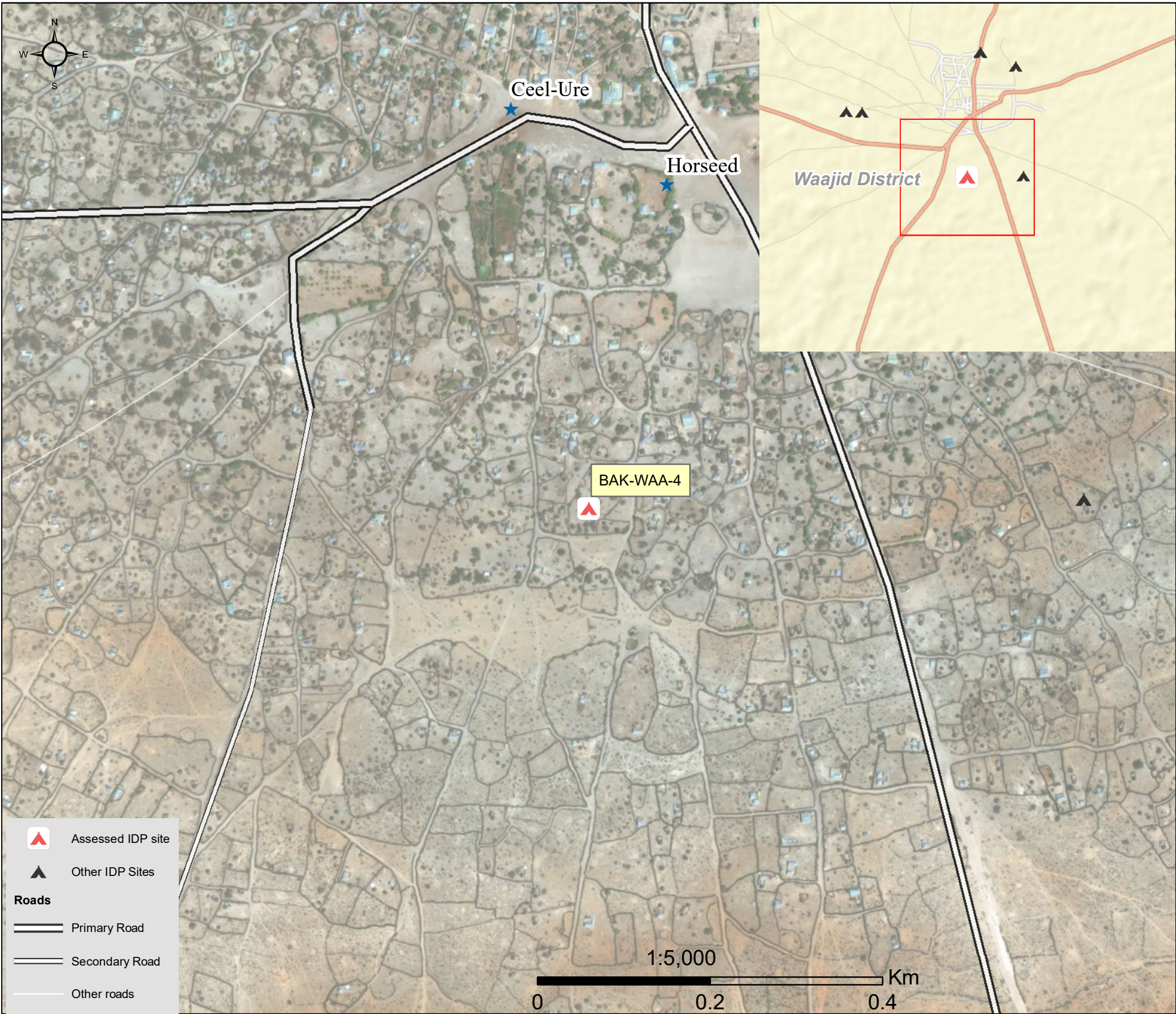
Date assessed: Feb - 2018

Location map



Assessed IDP sites in Waajid

Coordinates: Lat. 3.8034229, Long. 43.2467181



1.United Nations High Commissioner for Refugees (UNHCR): Protection & Return Monitoring Network (PRMN), September 2017

2.For each target location, the area was divided into 1km² grids. Enumerator teams then visited each grid to verify whether an IDP site was present. By visiting all grids, teams were able to determine the total number of sites in each location.

3.Where KI responses were significantly divergent, these were verified with the respective KIs with a higher reliability accorded to the response provided by the site manager or community leader.



Site Information

Settlement type	Spontaneous Site
Estimated number of individuals	500
Estimated number of households	300
Site capacity reached	No
Responsible management agency	Community Leader
Date when most site residents arrived	Jan-18
Site owner	Private



Protection

Number of vulnerable households:

Female-headed households	5
Child-headed households	2
Elderly individuals ⁴	150
Unaccompanied children	0
Individuals with a physical disability	3

Presence of shared community space	No
Presence of separate space for women/girls	No
Presence of child friendly space	No
Public lighting in the site	No
Type of landownership	Informal
Risk of eviction in next three months	No



WASH

Access to potable water	Yes
Number of latrines in the site:	
Latrines (mixed)	0
Latrines (male)	0
Latrines (female)	0
Access to handwashing facilities	N/A



Shelter and Non-Food Items (NFI)

Most common shelter types in the site⁵:

1. Buul
2. N/A
3. N/A

Electricity available in the site	No
Access to a NFI market	No
Average walking time to the nearest NFI market	N/A
Perceived safe access to NFI market	N/A



Displacement

Estimated number of households per displacement group:

IDPs	300
Host community/ non-displaced	0
IDP households arrived in the past 3 months	10

Most common areas of origin:

First area of origin	Bakool
Second area of origin	Gedo
Third area of origin	Bay



Food Security

Primary source of food	Market
Food distributions	None
Access to a food market	Yes



Health and Nutrition

Most common health issue(s) reported in the site:

1. Malaria
2. Other
3. N/A

Access to healthcare services	No
Average walking time to the nearest health service	N/A
Women give birth in the site	Yes
Access to nutrition services	No
Average walking time to the nearest nutrition service	N/A

Access to nutrition services: No



Education

Education services available	No
Average walking time to the nearest school	N/A

Education facilities available to residents in the site⁵:

1. N/A
2. N/A
3. N/A



Communication

Three most trusted sources of information⁵:

1. Friends/ family
2. Religious leader
3. Community leader

Most commonly spoken language	Somali Maay
-------------------------------	-------------

4.More than 60 years old.

5.Key informants could select multiple responses.



Introduction

While an estimated 2.1 million people live in displacement sites in Somalia¹, existing information on exact locations and site level vulnerabilities is sparse, and existing assessments have been ad-hoc and unharmonised, resulting in low comparability and verification.

The Detailed Site Assessment (DSA) was triggered in coordination with the Camp Coordination and Camp Management (CCCM) Cluster in order to provide the humanitarian community with up-to-date information on location of internally displaced persons (IDP) sites, the conditions and capacity of the sites and the humanitarian needs of the residents.

Target locations for assessment were selected based on needs identified by the CCCM Cluster

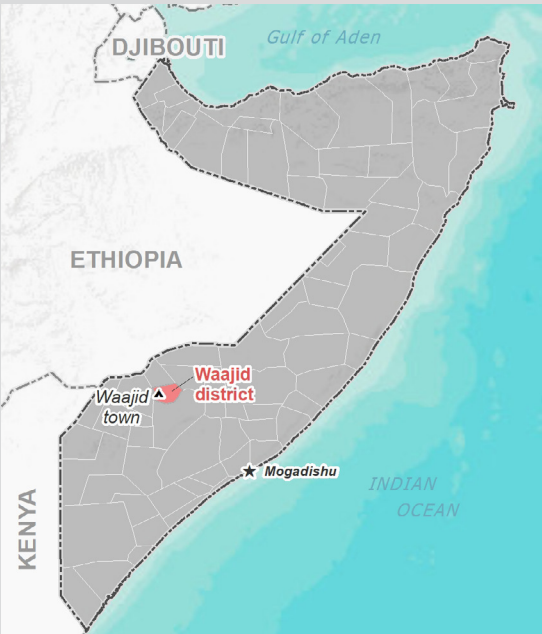
and accessibility for data collection.

A grid pattern approach² was applied during data collection to ensure that all IDP sites in the target area were identified. In each site, two key informant (KI) interviews were conducted: one with the site manager or community leader and one with a women's representative to ensure the perspectives of different groups were captured³. KI responses were aggregated to give one response per question per site.

This factsheet presents a summary of Burdhuxunle IDP Site profile along with the needs and priorities of IDPs residing in the site. As the data is captured through KIs, findings should be considered indicative only.

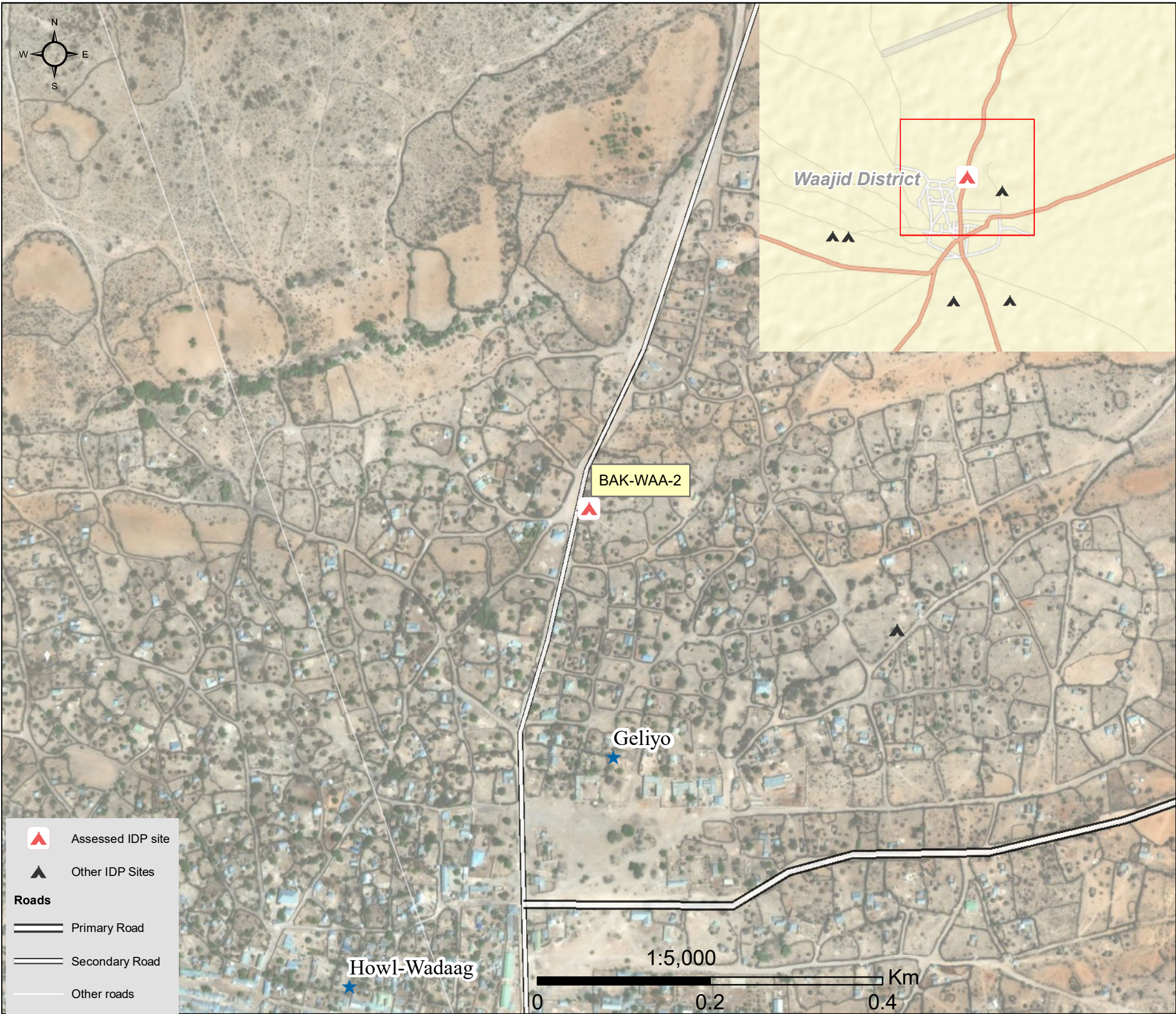
Date assessed: Feb - 2018

Location map



Assessed IDP sites in Waajid

Coordinates: Lat. 3.814775, Long. 43.2479638



1.United Nations High Commissioner for Refugees (UNHCR): Protection & Return Monitoring Network (PRMN), September 2017

2.For each target location, the area was divided into 1km² grids. Enumerator teams then visited each grid to verify whether an IDP site was present. By visiting all grids, teams were able to determine the total number of sites in each location.

3.Where KI responses were significantly divergent, these were verified with the respective KIs with a higher reliability accorded to the response provided by the site manager or community leader.





Site Information

Settlement type	Spontaneous Site
Estimated number of individuals	900
Estimated number of households	300
Site capacity reached	Yes
Responsible management agency	Community Leader
Date when most site residents arrived	Nov-17
Site owner	Private



Protection

Number of vulnerable households:

Female-headed households	20
Child-headed households	0
Elderly individuals ⁴	130
Unaccompanied children	0
Individuals with a physical disability	5

Presence of shared community space	No
Presence of separate space for women/girls	No
Presence of child friendly space	No
Public lighting in the site	No
Type of landownership	Informal
Risk of eviction in next three months	No



WASH

Access to potable water	No
Number of latrines in the site:	
Latrines (mixed)	0
Latrines (male)	0
Latrines (female)	0
Access to handwashing facilities	N/A



Shelter and Non-Food Items (NFIs)

Most common shelter types in the site⁵:

1. Buul	
2. N/A	
3. N/A	
Electricity available in the site	No
Access to a NFI market	No
Average walking time to the nearest NFI market	N/A
Perceived safe access to NFI market	N/A



Displacement

Estimated number of households per displacement group:

IDPs	300
Host community/ non-displaced	0
IDP households arrived in the past 3 months	50

Most common areas of origin:

First area of origin	Bakool
Second area of origin	Gedo
Third area of origin	N/A



Food Security

Primary source of food	Market
Food distributions	None
Access to a food market	Yes



Health and Nutrition

Most common health issue(s) reported in the site:

1. Malaria
2. Other
3. N/A

Access to healthcare services	No
Average walking time to the nearest health service	N/A
Women give birth in the site	Yes
Access to nutrition services	No
Average walking time to the nearest nutrition service	N/A

Access to nutrition services: No



Education

Education services available	No
Average walking time to the nearest school	N/A

Education facilities available to residents in the site⁵:

1. N/A
2. N/A
3. N/A



Communication

Three most trusted sources of information⁵:

1. Religious leader
2. Community leader
3. N/A

Most commonly spoken language	Somali Maay
-------------------------------	-------------

4.More than 60 years old.

5.Key informants could select multiple responses.