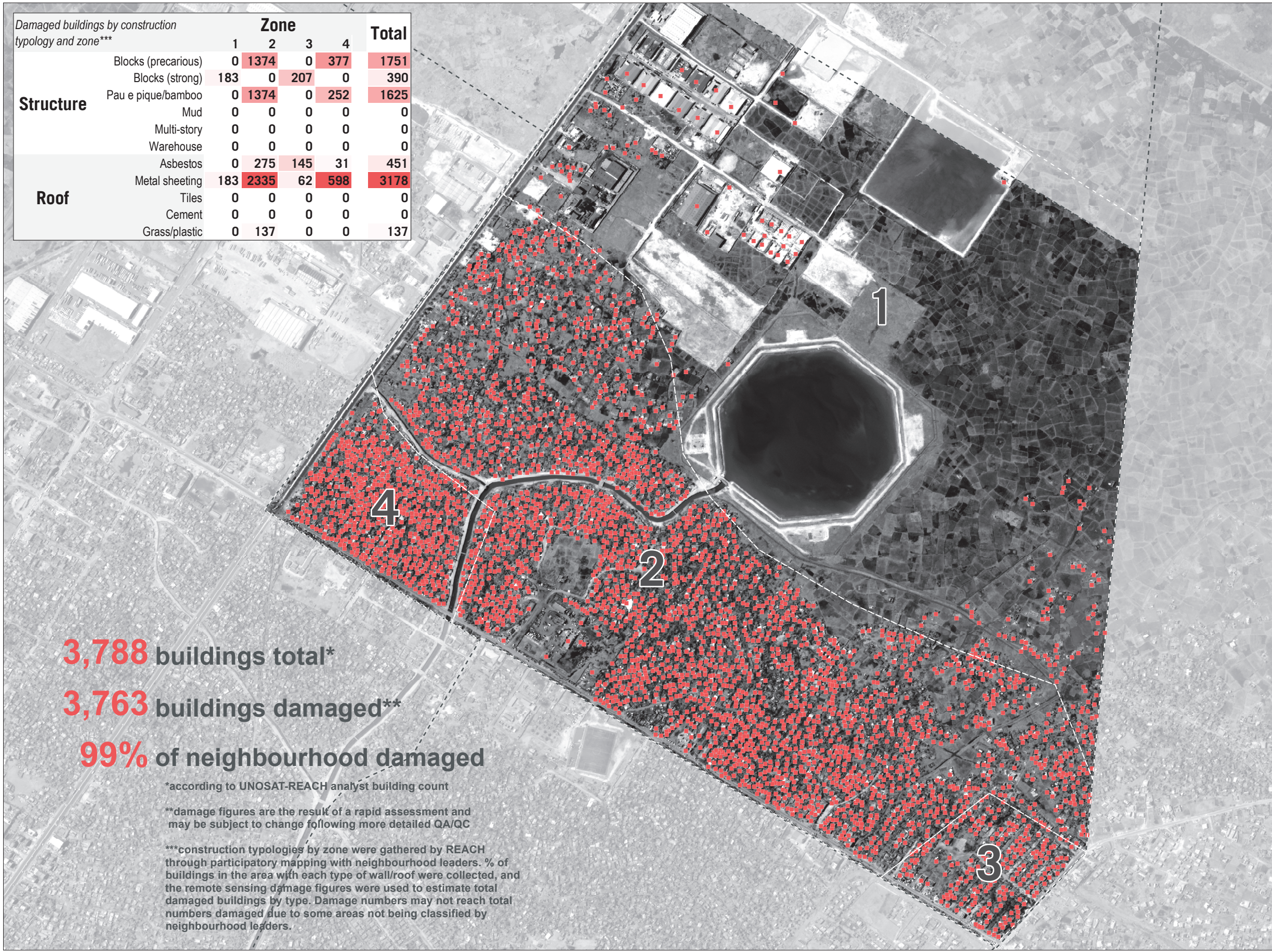


Structure	Zone				Total
	1	2	3	4	
Blocks (precarious)	0	1374	0	377	1751
Blocks (strong)	183	0	207	0	390
Pau e pique/bamboo	0	1374	0	252	1625
Mud	0	0	0	0	0
Multi-story	0	0	0	0	0
Warehouse	0	0	0	0	0
Asbestos	0	275	145	31	451
Metal sheeting	183	2335	62	598	3178
Tiles	0	0	0	0	0
Cement	0	0	0	0	0
Grass/plastic	0	137	0	0	137



3,788 buildings total*

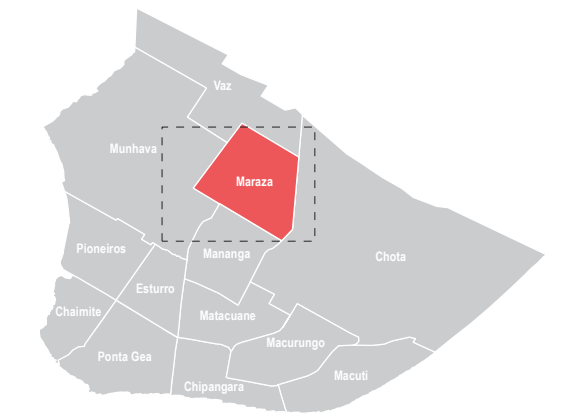
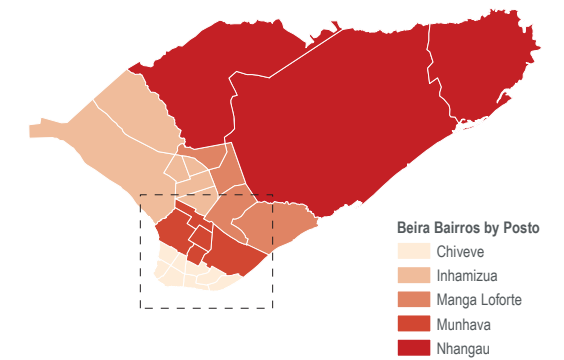
3,763 buildings damaged**

99% of neighbourhood damaged

*according to UNOSAT-REACH analyst building count

**damage figures are the result of a rapid assessment and may be subject to change following more detailed QA/QC

***construction typologies by zone were gathered by REACH through participatory mapping with neighbourhood leaders. % of buildings in the area with each type of wall/roof were collected, and the remote sensing damage figures were used to estimate total damaged buildings by type. Damage numbers may not reach total numbers damaged due to some areas not being classified by neighbourhood leaders.



Legend

- Damaged Buildings
- Bairros



Coordinate System: GCS WGS 1984
File: MOZ_Map_CycloneIdai_Beira_DamageByType_Maraza_30APR2019
Contact: reach.mapping@impact-initiatives.org

Note: Data, designations and boundaries contained on this map are not warranted to be error-free and do not imply acceptance by the REACH partners, associated, donors mentioned on this map.



Funded by
European Union
Civil Protection and
Humanitarian Aid