



IDP Camp Profile - Shariya

Dahuk, Iraq
December 2016

Management agency: BRHA
Manager/Focal point: Hakar Muhammad Amin
Phone number: 7504578875
Email: sharyacamp244@gmail.com
Registration actor: Camp Management

Summary

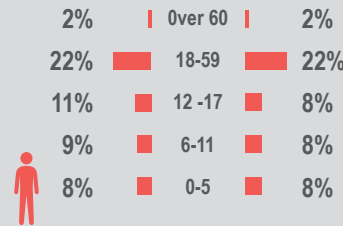
This profile provides an overview of conditions in Shariya camp. Primary data was collected through household surveys on 22-12-2016. Households were randomly sampled to a 95% confidence and 10% margin of error, based on population figures provided by CCCM. In some cases, additional information from camp managers has been used to support findings. Round VI of data collection was in August 2016

Camp Overview

of individuals: 16,607
of households: 3,156
Date opened: 1-11-2014
Occupied number: 4,000
Ongoing extension: no
Planned capacity: 4,000
Camp area: 453,837m²

Demographics

52% male / 48% female

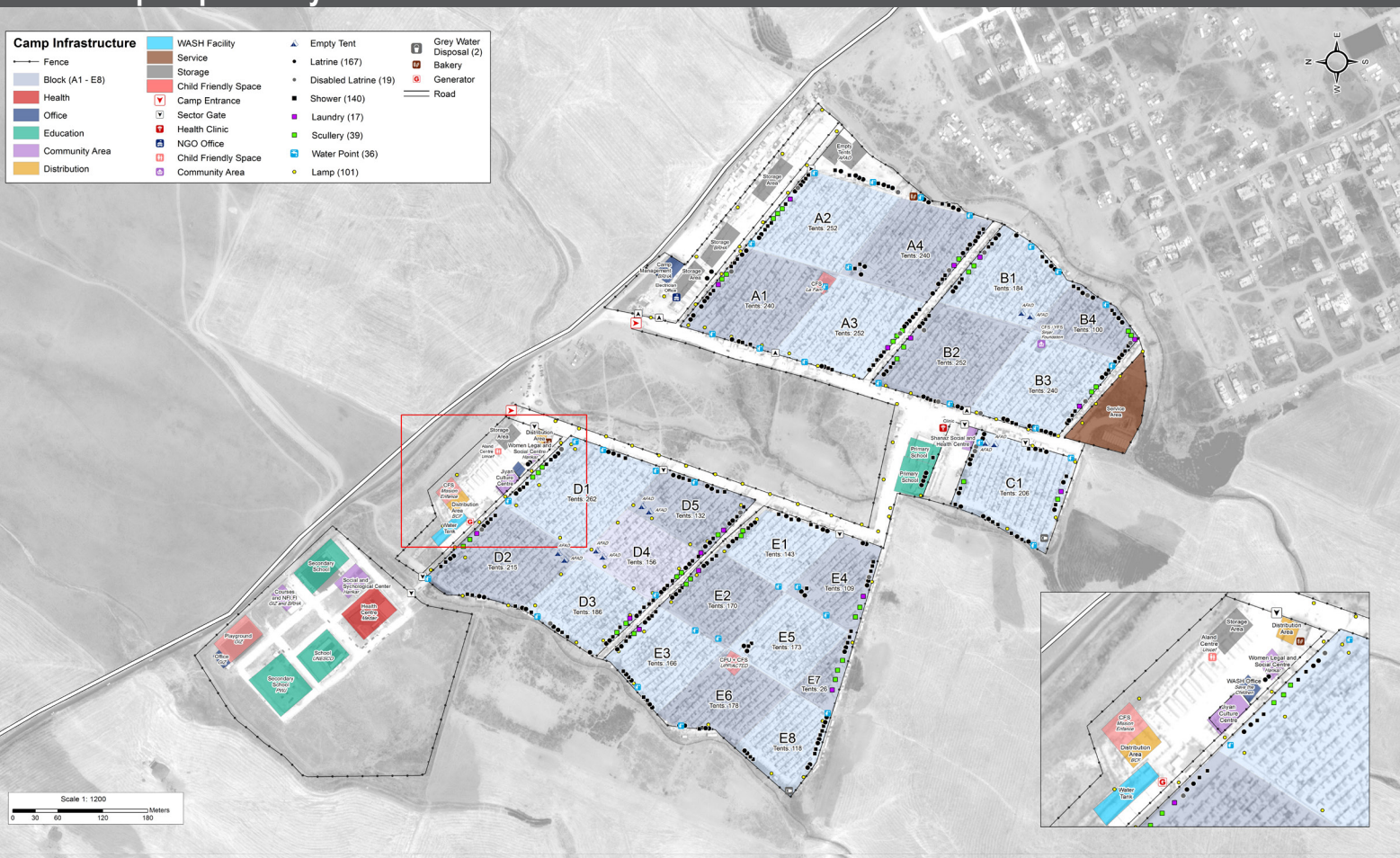
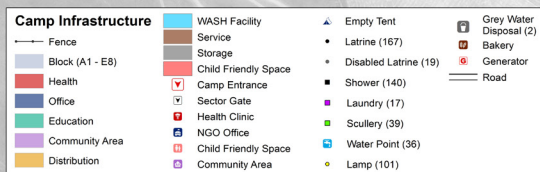


Location Map



IDP Camp Map - Shariya

Lat. 35° 25' 55.395" N Long. 45° 35' 24.967" E



Sectoral Minimum Standards

		Target	Previous Round	Current Round	Achievement
Education	% of children aged 6-11 attending formal school	100%	76%	84%	●
	% of children aged 12-17 attending formal school	100%	76%	62%	●
Food	% of households accessed Family Food Parcel or equivalent in the past month	100%	100%	90%	●
Health	Health services are available on-site or within walking distance	Yes	Yes	Yes	●
CCCM	Average open area per household	min. 30m ²	102m ²	108m ²	●
Protection	% of IDPs registered on an individual basis (MODM/DDM)	100%	99%	95%	●
Shelter	Average covered area per person	min. 3.5m ²	4.6m ²	4.6m ²	●
	Average number of individuals per shelter	max.5	4	4	●
WASH	# of persons per latrine	max. 20	18	18	●
	# of persons per shower	max. 20	20	19	●
	Frequency of solid waste disposal at least weekly	Min. weekly	Yes	Yes	●

Targets based on minimum standards agreed with the CCCM Cluster, Iraq. Findings based on household-level data, enumerator field observations, and camp management documentation
● Minimum standard reached, ● More than 50% minimum standard reached, ● Less than 50% of minimum standard reached or not at all





IDP Camp Profile - Shariya

Dahuk, Iraq
December 2016

Management agency: BRHA
Manager/Focal point: Hakar Muhammad Amin
Phone number: 7504578875
Email: sharyacamp244@gmail.com
Registration actor: Camp Management

Shelter

Top observed shelter type

Tent 100%

Top reported needed shelter items

Tarpaulin 84%

Sun shading net 54%

Timber 50%

Top reported needed basic items

Blanket 76%

Cooker 67%

Mattresses 47%

Top reported needed winter item

Clothes 42%

Top reported needed summer item

Rechargeable fan 32%

Food Security

Reported access to food assistance

90% accessed food assistance in past month

90% received Public Distribution System (PDS) in past month

Top three food consumption coping strategies

Cheaper 51%

Less meals 19%

Borrowed 15%

WASH

Latrines and showers

100% reported public or communal latrines

91% public/communal latrines lockable from the inside

80% public/communal latrines with functioning lighting

Top three reported methods of waste removal

Collected 93%

Communal bin 7%

n/a n/a

Reported drinking water sources

7% connection inside the home to collective water storage

7% connection inside the home to private water storage

86% communal water tap outside the shelter

Access to water

1% reported 24 consecutive hours without access to water in the past month

Community Organisation

IDP committees

99% reported awareness of IDP committee(s)

Complaints mechanism

24% made a complaint about conditions or assistance

Protection

Family Separation

1% reported hosting unaccompanied or separated minors

0% reported that other family members intended to join them

Vulnerable groups

Pregnant / lactating women 14%

Chronically ill individual(s) 6%

Disabled individual(s) 2%

Female headed households 7%

Intentions

0% planned to move to a different location in next 3 months

Restrictions

98% reported being able to leave the camp temporarily (e.g. to go to the market, for livelihood opportunities)

Livelihoods

12% reported as being economically inactive

Top three income sources*:

Public security official 18%

Low-skilled services 18%

No livelihood 12%

*Households were asked to select all income sources within household.

Top three reported livelihood coping strategies

Sold assistance 28%

Debt 27%

Charitable donations 13%