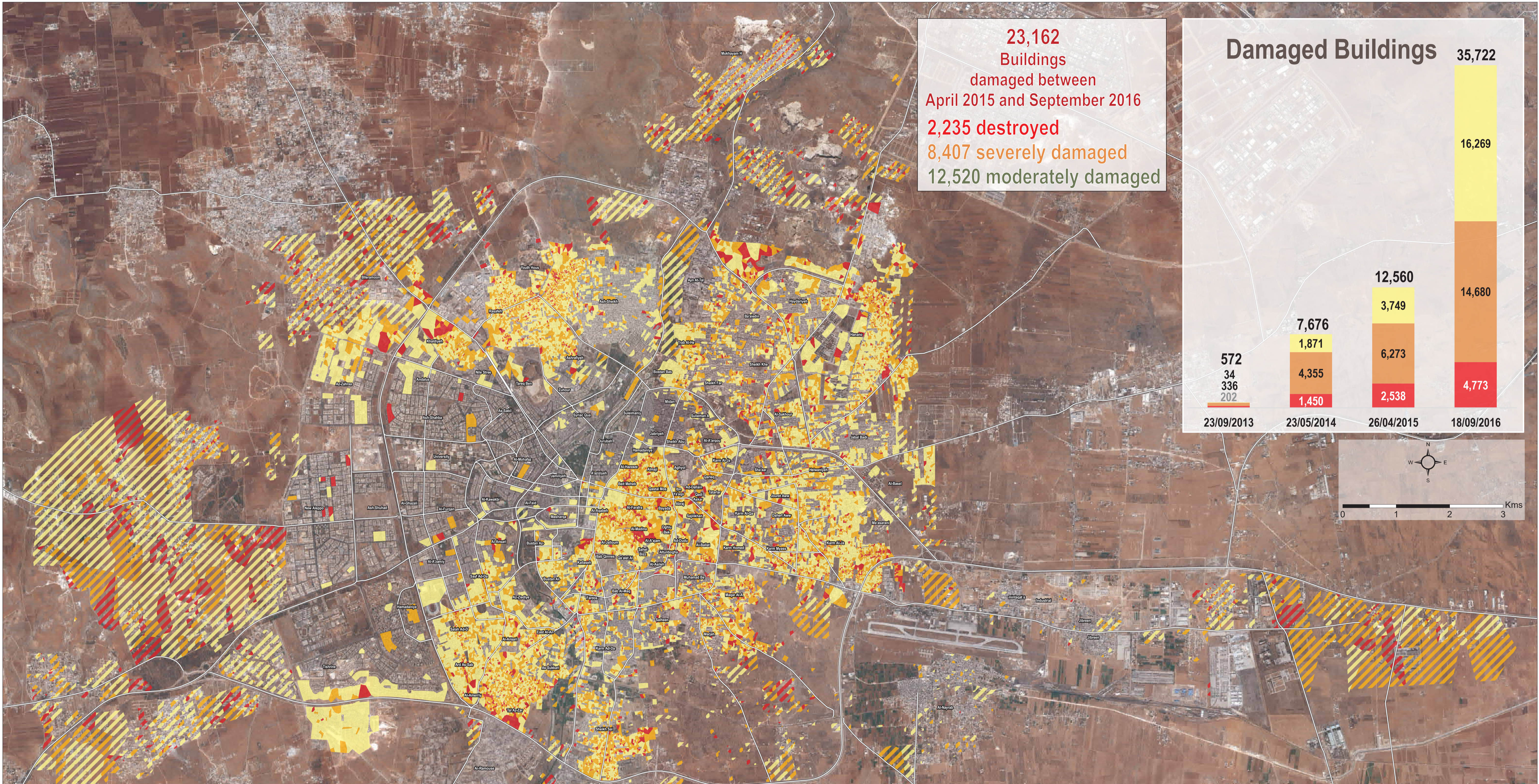


SYRIA - City of Aleppo

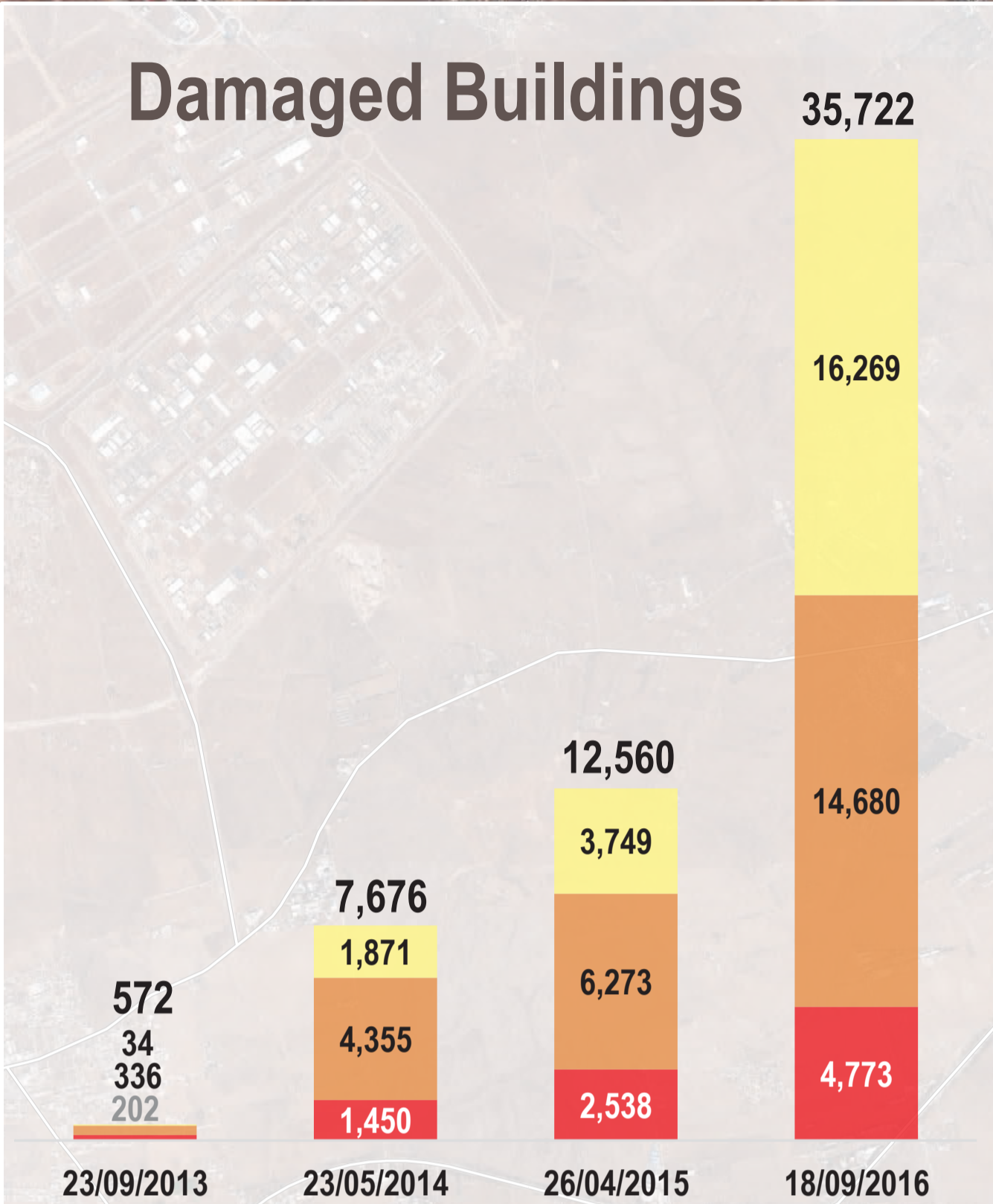
Shelter Damage Assessment as of 18th September 2016

For Authorized Distribution Only
 For Humanitarian Purposes Only
 Production date : 06 January 2017



23,162
 Buildings
 damaged between
 April 2015 and September 2016

2,235 destroyed
8,407 severely damaged
12,520 moderately damaged



- Damaged Zones**
- Destroyed
 - Severe Damage
 - Moderate Damage
 - Destroyed, low density
 - Severe Damage, low density
 - Moderate Damage, low density

Note: Data, designations and boundaries contained on this map are not warranted to be error-free and do not imply acceptance by the REACH partners, associated, donors mentioned on this map.
 Satellite Image: WorldView 2, Image date: 18 September 2016, Resolution 50cm, Copyright: DigitalGlobe
 Shelter damage assessment: REACH/UNOSAT

Coordinate System: WGS 1984 UTM Zone 37N
 Projection: Transverse Mercator
 File: REACH_SYR_Map_Aleppo_DamageAssessment_06012017_A1
 Contact: reach.mapping@impact-initiatives.org

