

Summary

This profile provides an overview of water, sanitation and hygiene (WASH) infrastructure within Camp 13 in Ukhiya, Cox's Bazar. Primary data for this round was collected between 11 March - 2 April 2018.<sup>1</sup> Findings should be considered indicative only.

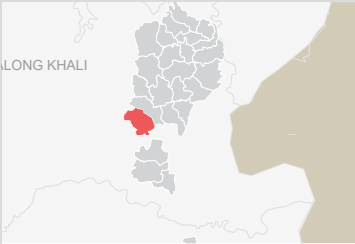
Site Overview

# of individuals:	42889
# of households:	10096
# of shelters:	4620
# of individuals per shelter:	9

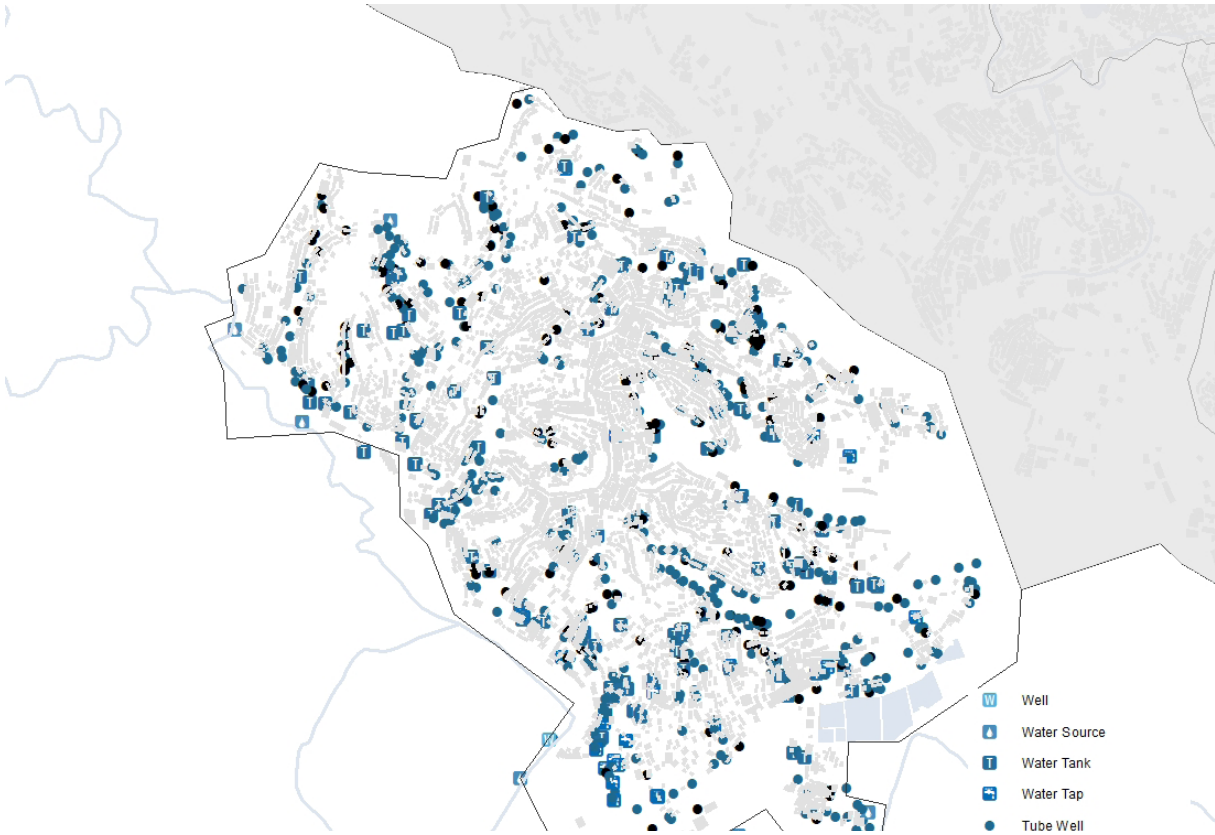
Key WASH Infrastructure

# of latrines	1531
(% functional):	(85%)
% of safe latrines <sup>2</sup> :	81
# of handpumps	592
(% functional):	(71%)
# of washrooms:	615

Location Map



Access to Water



Three most commonly identified types of water points, by functionality



Key sectoral achievements

	Target	Current Round	Achievement
# of people per functional handpump	max. 250 <sup>3</sup>	72	<div></div>
% of shelters with at least 1 functional handpump within 200m <sup>4</sup>	100%	100%	<div></div>

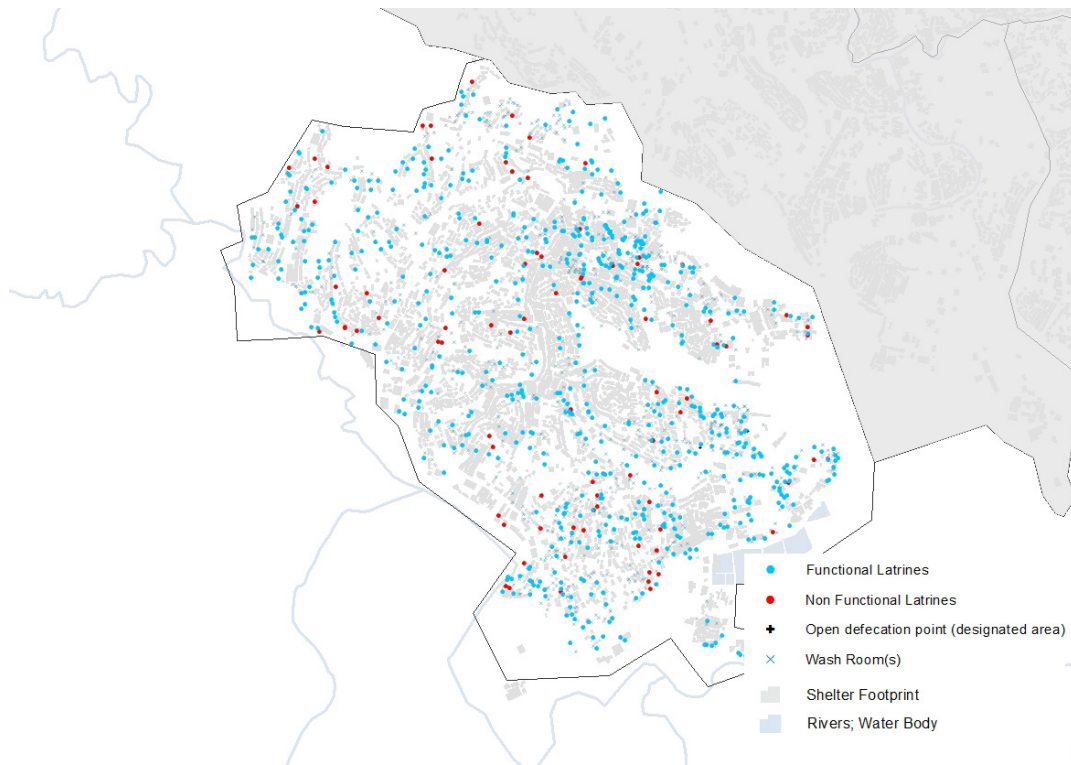
Targets based on WASH Sector Standards/Indicators for the Rohingya response, Sphere Minimum Standards/Indicators as well as Department of Public Health and Environment (DPHE) Minimum Standards/Indicators ● Minimum standard/indicator reached, ● 75%-99% minimum standard/indicator reached, ● 50-74% minimum standard/indicator reached, ● Less than 50% of minimum standard/indicator reached

<sup>1</sup> REACH enumerators conducted a full sweep of all sites and camps (as per boundaries defined by ISCG) and used an Open Data Kit (ODK) form to log all key infrastructure observed during this sweep, with further details to be logged for WASH infrastructure. <sup>2</sup> Safe refers to fully covered latrines (i.e. a latrine with four walls, a roof and a door). <sup>3</sup> This target is based on standards for the medium and long term (3 months +), for the immediate phase (0-3 months) it is 1000. <sup>4</sup> The distance is based on standards for the long term (6 months+), for the immediate phase (0-3 months) it is 750 metres and for the medium phase (3-6 months) 500 metres.





## Sanitation



### Latrine characteristics

% of functional/non-functional latrines



85% Functional (non-full) latrines  
15% Non-functional latrines

% of safe/unsafe latrines



81% Safe (roof, door, wall)  
19% Unsafe

% of latrines with/without lights



1% With lights  
99% Without lights

### Key sectoral achievements

	Target	Current Round	Achievement
# of people per functional (non-full) latrine	max. 20 <sup>4</sup>	33	<span style="color: red;">●</span>
# of people per safe latrine	N/A	35	N/A
% of shelters with at least one functional latrine block within 50m	100%	95%	<span style="color: green;">●</span>
% of functioning handpumps with no latrine within 10m	100%	36%	<span style="color: red;">●</span>

Targets based on WASH Sector Standards/Indicators for Rohingya response, Sphere Minimum Standards/Indicators as well as DPHE Minimum Standards/Indicators ● Minimum standard/indicator reached, ● 75%-99% minimum standard/indicator reached, ● 50-74% minimum standard/indicator reached, ● Less than 50% of minimum standard/indicator reached

<sup>4</sup> This target is based on standards for the long term (6 months +), for the immediate phase (0-3 months) it is 100 and for the medium phase (3-6 months) 75.