

SYRIA MARKET MONITORING EXERCISE

Snapshot: 16-24 July 2018

Cash-Based Responses
Technical Working Group

REACH Informing
more effective
humanitarian action

INTRODUCTION

To inform humanitarian cash programming, REACH and the Cash-Based Responses Technical Working Group (CBR-TWG) conduct monthly market monitoring throughout Syria to assess the availability and prices of 36 basic commodities that are typically sold in markets and consumed by average Syrian households, including food and non-food items, water, fuel, and cellphone data.

Of these, 18 items comprise the Survival Minimum Expenditure Basket (SMEB), see below, which represents the minimum culturally adjusted items required to support a 6-person household for a month.

Data was collected this month by ACTED, CARE, Shafak, Concern, DCA, GOAL, Ihsan, IRC, Mercy Corps, People in Need, REACH, Solidarités International, Violet, and Watan.

Datasets are available on the [REACH Resource Centre](#), [the Humanitarian Data Exchange](#), and are also distributed through partners across the humanitarian community.

SURVIVAL MINIMUM EXPENDITURE BASKET (SMEB) CONTENTS

	Item	Quantity	
Food Items	Bread	37 kg	
	Bulgur	15 kg	
	Chicken	6 kg	
	Eggs	6 kg	
	Fresh vegetables	12 kg	
	Ghee/vegetable oil	7 kg/L	
	Red lentils	15 kg	
	Rice	19 kg	
	Salt	1 kg	
	Sugar	5 kg	
	Tomato paste	6 kg	
	Hygiene items	Bathing soap	12 bars
		Laundry/dish soap	3 kg
Sanitary pads		4 packs of 10	
Toothpaste		200 g	
Fuel	Cooking fuel*	25 L	
Water	Water trucking	4500 L	
Telecom	Smartphone data	1 GB	
Other	Float (other costs)**	7.5% total value	

* Kerosene in northern Syria; LP Gas in southern Syria

** Float only applied to observations where prices of all SMEB contents could be collected

KEY DEVELOPMENTS

North Syria: Dollar exchange rate fluctuations

In northwest Syria the US Dollar to Syrian Pound (SYP) exchange rate fell for the fourth consecutive month and the median SMEB cost for the northwest has continued to decrease. However, the exchange rate has remained relatively stable in northeast Syria and the median complete SMEB cost has remained at 0% change.

North Syria: Transport fuel increase

The median transport fuel costs saw a slight increase between June and July, at 1% in northwest Syria and 7% in northeast Syria. Since February 2018 the price for fuel in northeast Syria has increased by 56%, to 159 SYP. Fuel prices are often influenced by changes in road taxes and re-opening of road in Idlib may further influence the changes in price.

Northwest: SMEB food prices decrease

SMEB food prices have decreased in northwest Syria, with sub-districts including Qourqeena which reported decreases in price of 16%. The changes in median food prices are thought to be due to the distribution of food baskets increasing supplies and changing food demands, throughout the northwest in the previous month.

Northeast: Lentil prices increase

In nine of 17 sub-districts in northeast Syria, the price of lentils has increased since June 2018. The biggest price increases were 43% and 50%, reported in Al-Hasakeh and Tell Abiad respectively. After a harvest, farmers often store their crops in warehouses until availability decreases and therefore prices increase.

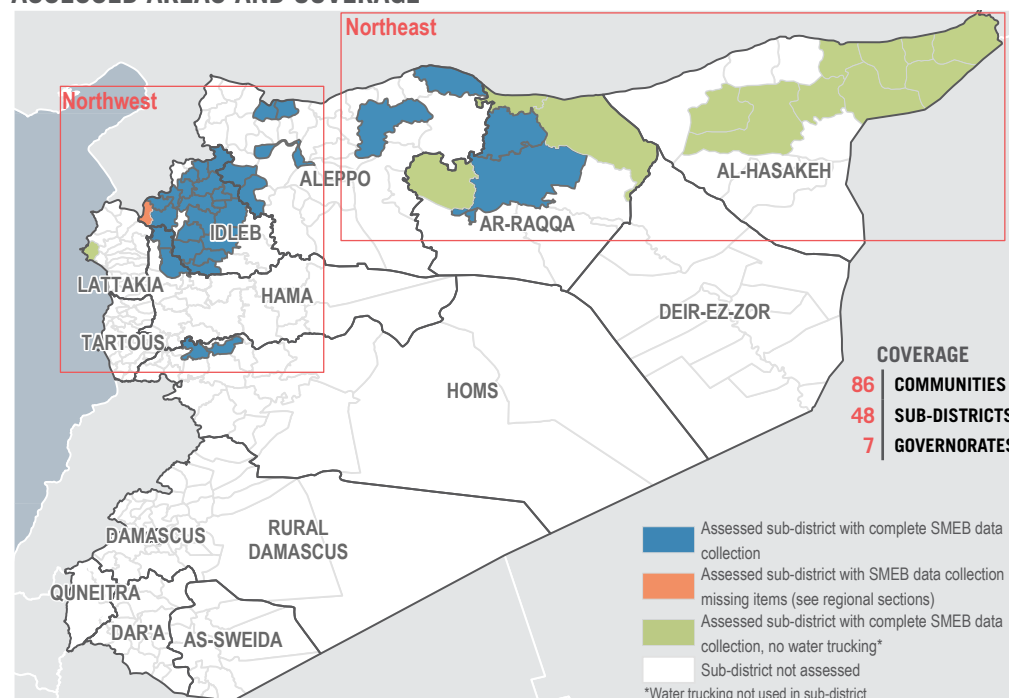
South: Coverage changes

Coverage in south Syria for this monitoring exercise has been limited so this month of Market Monitoring is only focusing on northwest and northeast Syria. Depending on how the situation in the south develops, Market Monitoring may resume. Recent updates on markets in the south can be seen in the three REACH rapid market assessments which included two fact sheets and three datasets:

[Round 1 fact sheet: 02-03 July 2018](#)

[Round 3 fact sheet: 16-19 July 2018](#)

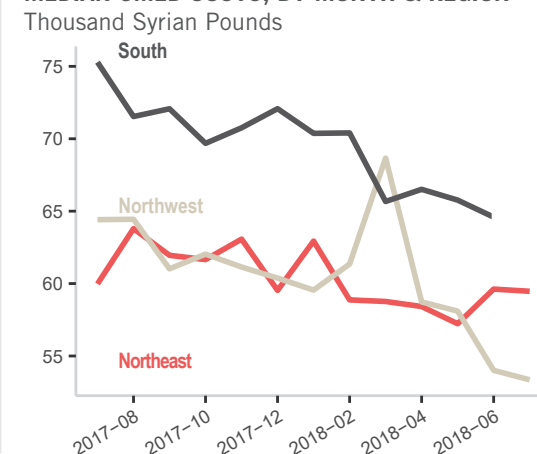
ASSESSED AREAS AND COVERAGE



MEDIAN SMEB COST IN SYP (USD), BY REGION

53,354 SYP (134.54 USD)	NORTHWEST SYRIA - IDLEB, LATTAKIA, HAMA, HOMS & WESTERN ALEPPO GOVERNORATES
59,467 SYP (120.54 USD)	NORTHEAST SYRIA - AL-HASAKEH, AL-RAQQA, & EASTERN ALEPPO GOVERNORATES

MEDIAN SMEB COSTS, BY MONTH & REGION



KEY DEVELOPMENTS

Zarbah hygiene items increase in price

While the regional median of hygiene items has decreased by 6% since June 2018. The median price in Zarbah has increased by 17% and was reported as 6,150 SYP, which is the highest cost among the northwest sub-districts. In particular, Zarbah soap hygiene items have increased by 48% and toothpaste increased by 36%, since June 2018.

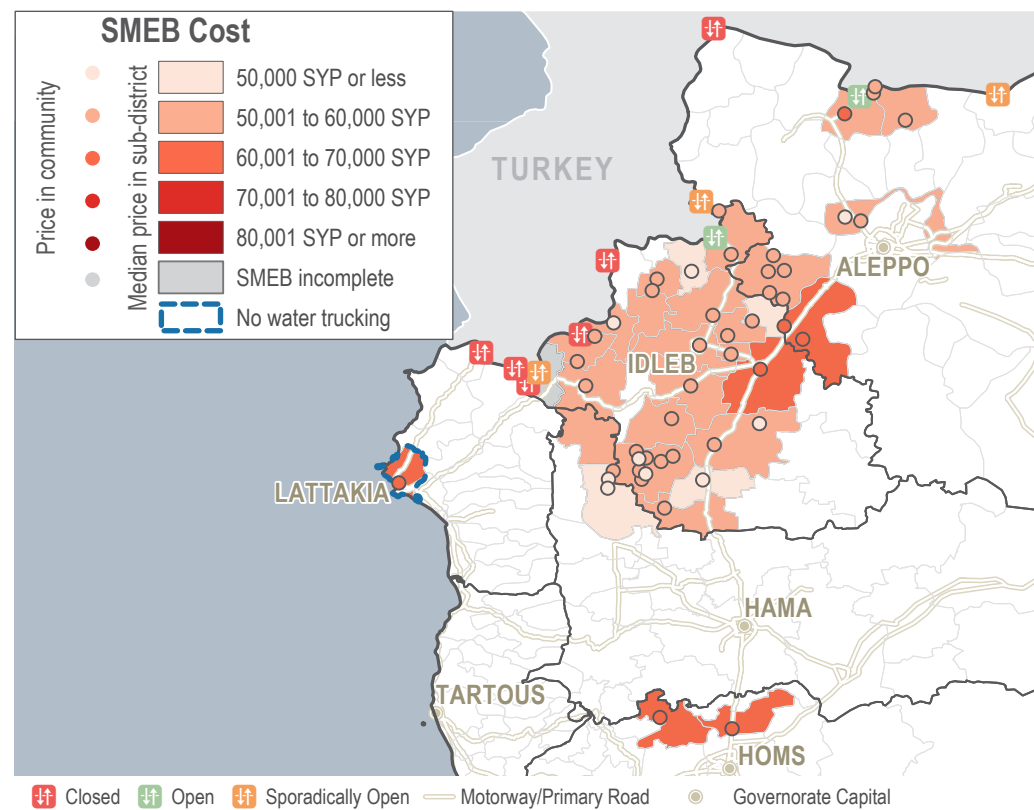
SMEB food prices decrease

SMEB food prices have decreased in 23 of the 29 sub-districts where all commodities were reported as available. Median SMEB prices have decreased by 4%, with the largest decrease reported in Qourqeena at 16%, reducing the price to 30,715 SYP. Prices of vegetables and proteins (chicken, lentils and eggs) decreased in particular. Price fluctuations in food are possibly due to the distribution of food baskets throughout northwest Syria.

Talbiseh, Taldu and Lattakia high cellphone data prices

Data prices in Talbiseh and Taldu are higher than elsewhere in northwest Syria. In both locations data prices per gigabyte (GB) were reported as 5,000 SYP, with Talbiseh reporting a 400% increase in cost since June 2018. Consistently higher prices were also reported in Lattakia, at 4,000 SYP in June 2018 and showing no change since February 2018. While these prices are high, it is likely due to the rural location of Talbiseh, Taldu and Lattakia.

SMEB COST RANGES (SYP), BY SUB-DISTRICTS & COMMUNITIES



MEDIAN SMEB COSTS & CHANGES

Syrian Pounds

Sub-district	SMEB	One month change	Six month change
Northwest Syria	53,354	-1%	-13%
Ariha	56,220	+4%	-7%
Armanaz	51,961	-2%	-14%
Atareb	56,843	+2%	-7%
A'zaz	58,919	-2%	-8%
Badama	NA	NA	NA
Bennsh	59,053	-1%	-10%
Dana	51,068	-5%	-21%
Darkosh	53,516	-2%	-12%
Ehsem	53,759	+3%	-15%
Haritan	50,159	-3%	NA
Heish	49,855	-5%	NA
Idlib	52,874	-12%	-14%
Janudiyeh	52,068	-4%	-10%
Jisr-Ash-Shugur	57,213	-2%	-21%
Kafr Nobol	50,337	-4%	NA
Kafr Takharim	51,049	-3%	-16%
Khan Shaykun	55,387	-5%	-14%
Lattakia	NA	NA	NA
Maaret Tamsrin	53,846	+1%	-10%
Ma'arrat An Nu'man	50,217	-4%	NA
Madiq Castle	47,971	-5%	-19%
Qourqeena	46,100	-10%	-23%
Saraqab	60,529	+12%	NA
Sarmin	55,072	-6%	NA
Suran	53,192	-7%	-10%
Talbiseh	65,813	NA	NA
Taldu	64,496	0%	NA
Tefnaz	47,230	-14%	-26%
Zarbah	61,235	+3%	-7%
Ziyara	50,130	-5%	-17%

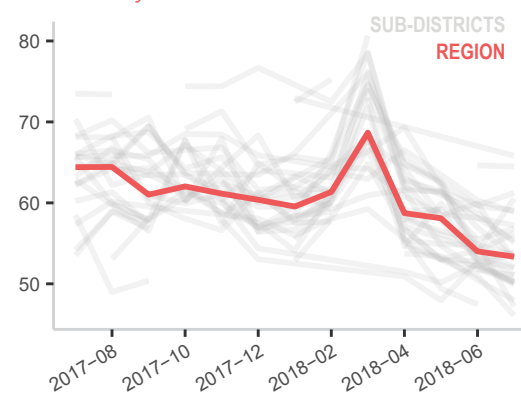
SUB-DISTRICTS WITH INCOMPLETE SMEBS IN JULY

SUB-DISTRICT	MISSING ITEMS
Badama	Toothpaste, Water

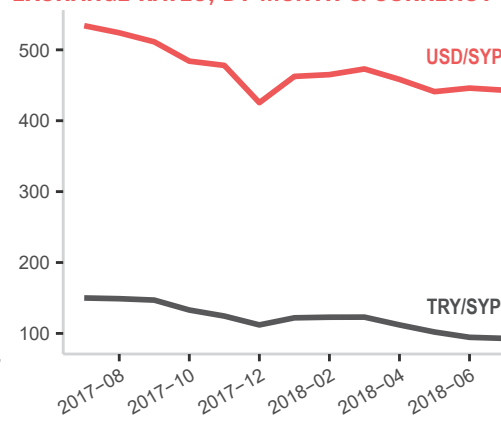
Note: A lack of data for a SMEB item does not imply a shortage

MEDIAN SMEB COSTS, BY MONTH

Thousand Syrian Pounds



EXCHANGE RATES, BY MONTH & CURRENCY



* Denotes sub-districts where water trucking is not common, and therefore does not have water trucking prices in the SMEB cost

MEDIAN SMEB FOOD ITEMS

See Page 1, Syrian Pounds

Sub-district	SMEB Food Items	One month change	Six month change
Northwest Syria	35,962	-4%	-9%
Ariha	39,575	+1%	0%
Armanaz	35,442	-1%	-4%
Atareb	38,113	0%	-2%
A'zaz	40,488	+1%	-8%
Badama	35,675	-12%	-7%
Bennsh	41,169	-1%	-6%
Dana	35,550	-1%	-19%
Darkosh	35,676	-4%	-10%
Ehsem	35,611	+1%	-14%
Haritan	35,209	-1%	NA
Heish	35,851	-7%	NA
Idleb	36,936	-8%	-14%
Janudiyeh	35,715	-3%	-5%
Jisr-Ash-Shugur	38,378	-2%	-15%
Kafr Nobol	35,125	-3%	NA
Kafr Takharim	34,704	-8%	-8%
Khan Shaykun	38,148	-6%	-12%
Lattakia	47,634	-7%	-3%
Maaret Tamsrin	36,560	+1%	-5%
Ma'arrat An Nu'man	36,074	-2%	NA
Madiq Castle	31,790	-6%	-17%
Qourqeena	30,715	-16%	-20%
Saraqab	41,255	+15%	NA
Sarmin	39,234	-5%	NA
Suran	35,025	-10%	-14%
Talbiseh	45,647	NA	NA
Taldu	43,109	-8%	NA
Teftnaz	33,538	-10%	-21%
Zarbah	40,695	-2%	-6%
Ziyara	32,845	-5%	-15%

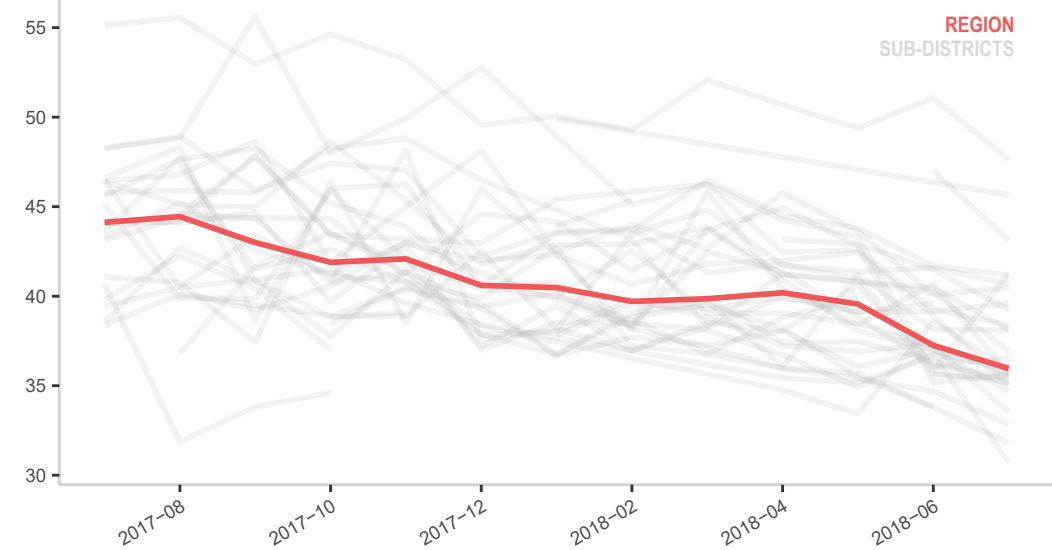
MEDIAN SMEB COOKING FUEL

Kerosene 25L, Syrian Pounds

Sub-district	SMEB Cooking Fuel	One month change	Six month change
Northwest Syria	6,250	0%	-38%
Ariha	6,250	+25%	-38%
Armanaz	5,625	-10%	-44%
Atareb	6,250	0%	-38%
A'zaz	6,250	0%	0%
Badama	6,250	0%	-38%
Bennsh	6,625	+6%	-32%
Dana	6,094	-13%	-33%
Darkosh	6,250	0%	-38%
Ehsem	6,938	+8%	-26%
Haritan	6,250	0%	NA
Heish	5,500	-2%	NA
Idleb	6,875	-8%	-15%
Janudiyeh	6,250	0%	-38%
Jisr-Ash-Shugur	6,875	0%	-45%
Kafr Nobol	6,250	0%	-43%
Kafr Takharim	5,375	+8%	-46%
Khan Shaykun	5,625	0%	-36%
Lattakia	3,750	0%	0%
Maaret Tamsrin	6,250	0%	-29%
Ma'arrat An Nu'man	5,625	-6%	NA
Madiq Castle	6,563	-5%	-32%
Qourqeena	6,250	0%	-38%
Saraqab	6,500	+4%	NA
Sarmin	6,875	-8%	NA
Suran	6,250	+6%	+10%
Talbiseh	3,500	NA	NA
Taldu	3,500	0%	NA
Teftnaz	5,000	-16%	-45%
Zarbah	6,250	+12%	-38%
Ziyara	6,250	-17%	-38%

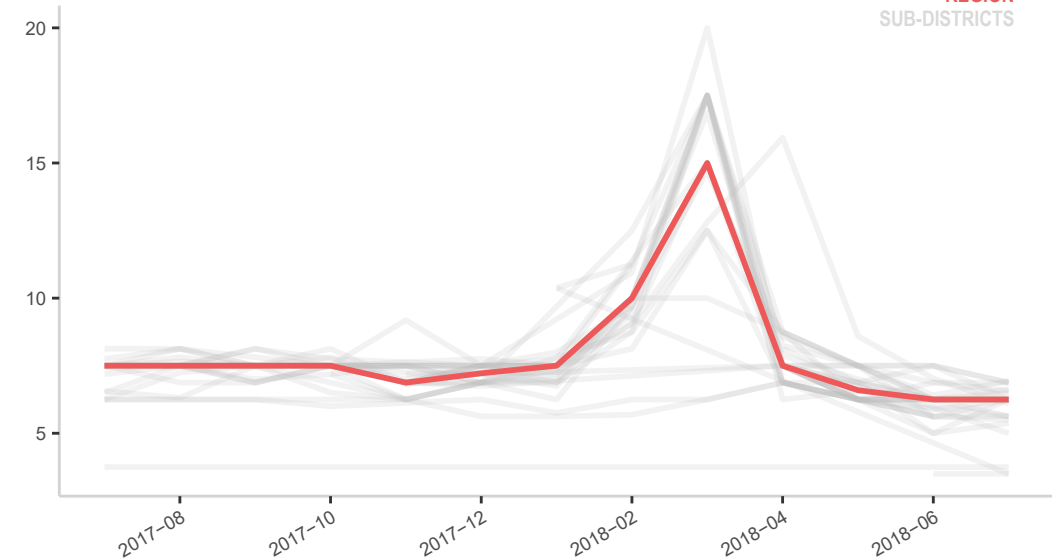
MEDIAN SMEB FOOD COSTS, BY MONTH

Region (red) and Sub-districts (grey), Thousand Syrian Pounds



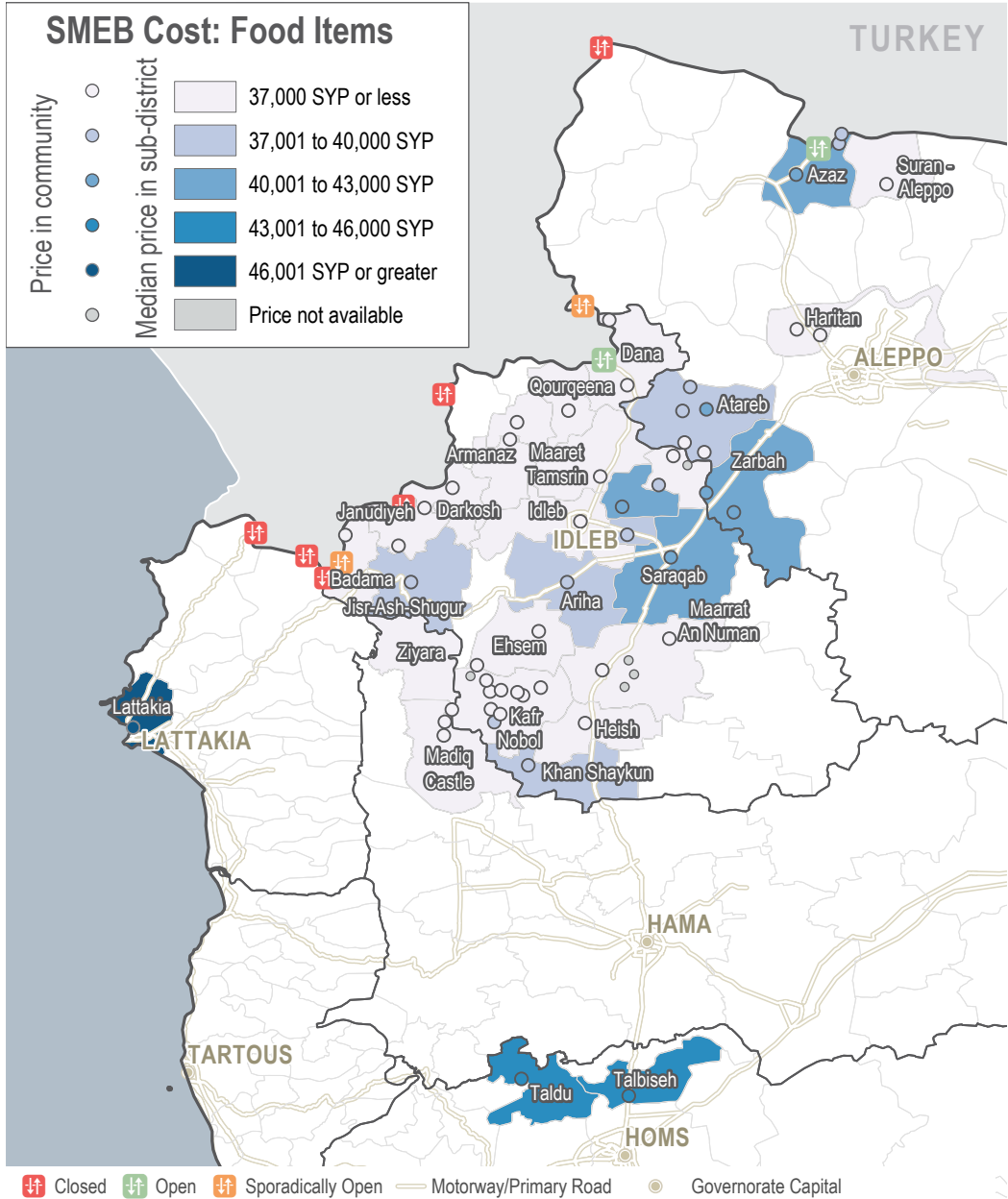
MEDIAN SMEB COOKING FUEL COSTS, BY MONTH

Region (red) and Sub-districts (grey), Thousand Syrian Pounds



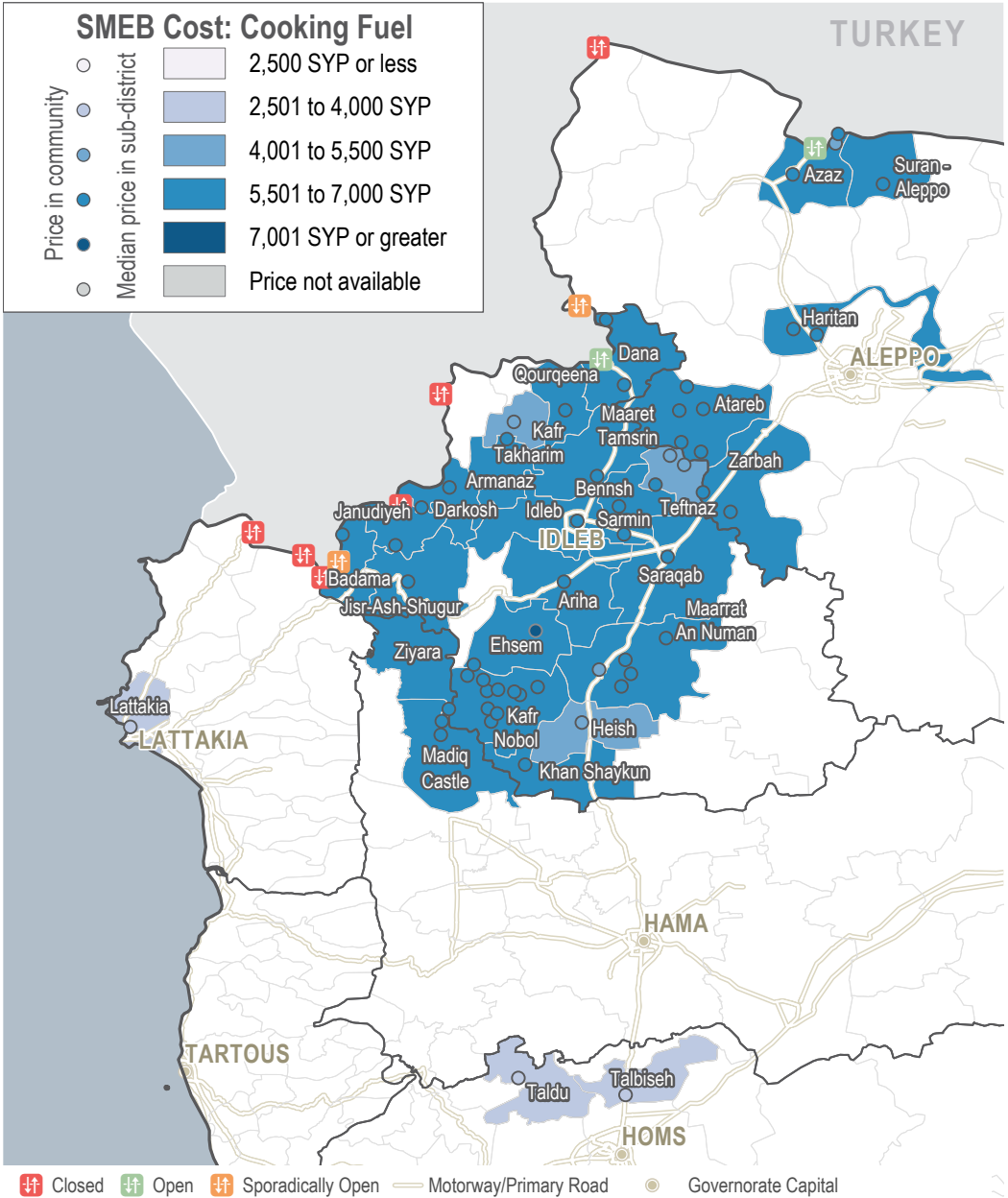
SMEB FOOD ITEMS

Sub-districts & communities, Syrian Pounds



SMEB COOKING FUEL

Sub-districts & Communities, Syrian Pounds



MEDIAN SMEB WATER TRUCKING

4,500L, Syrian Pounds

Sub-district	SMEB Water Truck	One month change	Six month change
Northwest Syria	2,273	0%	-11%
Ariha	3,060	+1%	0%
Armanaz	2,700	-12%	-30%
Atareb	2,250	+39%	-17%
A'zaz	2,520	-30%	-25%
Badama	NA	NA	NA
Bennsh	1,778	+11%	-21%
Dana	1,755	0%	-13%
Darkosh	3,060	+10%	+55%
Ehsem	2,239	+23%	-1%
Haritan	1,620	0%	NA
Heish	1,890	0%	NA
Idleb	900	-77%	-17%
Janudiyeh	2,250	+5%	+5%
Jisr-Ash-Shugur	3,060	0%	-34%
Kafr Nobol	1,958	-31%	+34%
Kafr Takharim	3,000	+32%	-42%
Khan Shaykun	2,970	0%	+16%
Lattakia	NA	NA	NA
Maaret Tamsrin	2,295	+11%	-35%
Ma'arrat An Nu'man	1,609	-22%	NA
Madiq Castle	2,138	-5%	-5%
Qourqeenaa	1,534	+838%	-40%
Saraqab	2,880	+25%	NA
Sarmin	1,035	-32%	NA
Suran	3,015	0%	-11%
Talbiseh	3,150	NA	NA
Taldu	4,500	0%	NA
Teftnaz	1,395	-42%	-45%
Zarbah	3,443	+32%	+30%
Ziyara	3,375	+19%	+36%

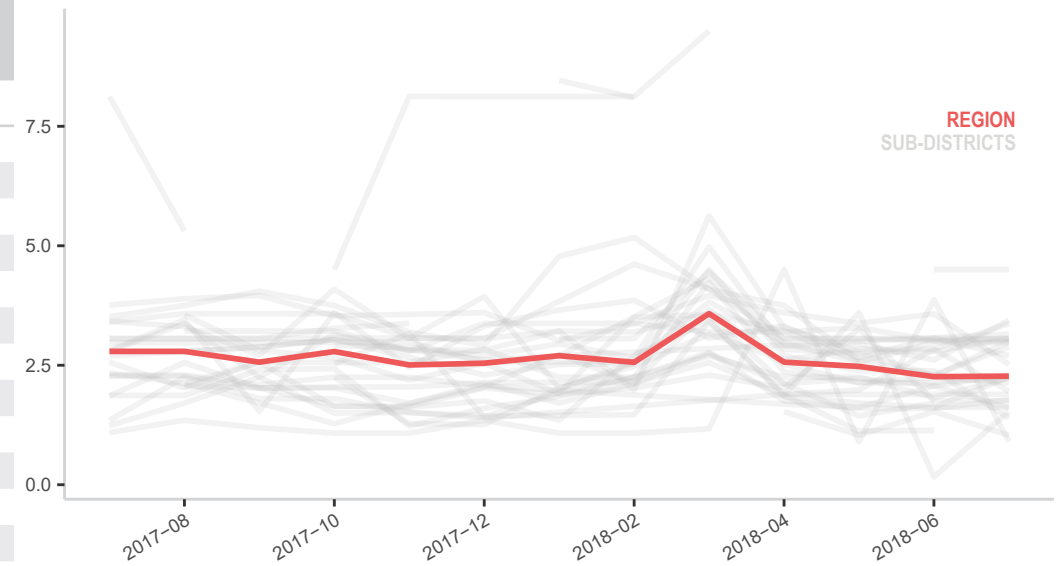
MEDIAN TRANSPORT FUEL PRICE

Diesel and Petrol 1L (Government of Syria and Manually Refined), Syrian Pounds

Sub-district	Diesel and Petrol	One month change	Six month change
Northwest Syria	303	+1%	-27%
Ariha	298	-8%	-31%
Armanaz	304	+15%	-26%
Atareb	305	+1%	-28%
A'zaz	313	+9%	+1%
Badama	288	-11%	-34%
Bennsh	307	+4%	-23%
Dana	260	-2%	-30%
Darkosh	304	+1%	-29%
Ehsem	292	0%	-27%
Haritan	308	+2%	NA
Heish	293	0%	NA
Idleb	325	+1%	-21%
Janudiyeh	286	-4%	-27%
Jisr-Ash-Shugur	258	-8%	-42%
Kafr Nobol	301	-3%	-28%
Kafr Takharim	315	+9%	-18%
Khan Shaykun	300	-2%	-28%
Lattakia	203	-1%	0%
Maaret Tamsrin	319	+2%	-18%
Ma'arrat An Nu'man	304	-1%	NA
Madiq Castle	305	0%	-28%
Qourqeenaa	283	+1%	-31%
Saraqab	321	+8%	NA
Sarmin	331	+5%	NA
Suran	269	-8%	-9%
Talbiseh	293	NA	NA
Taldu	280	-16%	NA
Teftnaz	323	+17%	-24%
Zarbah	301	-3%	-29%
Ziyara	316	0%	-31%

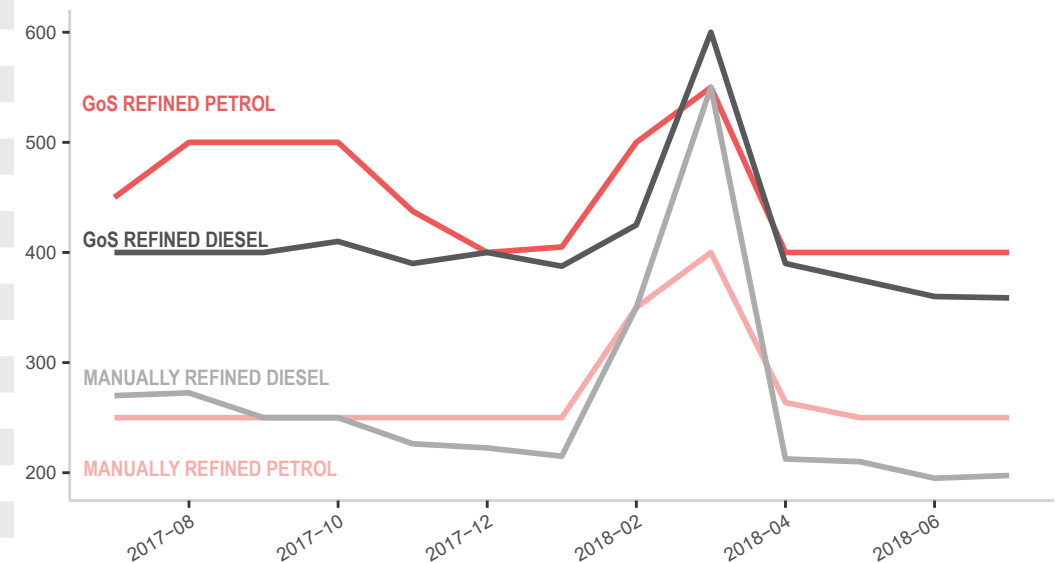
MEDIAN SMEB WATER TRUCKING COSTS, BY MONTH

Thousand Syrian Pounds



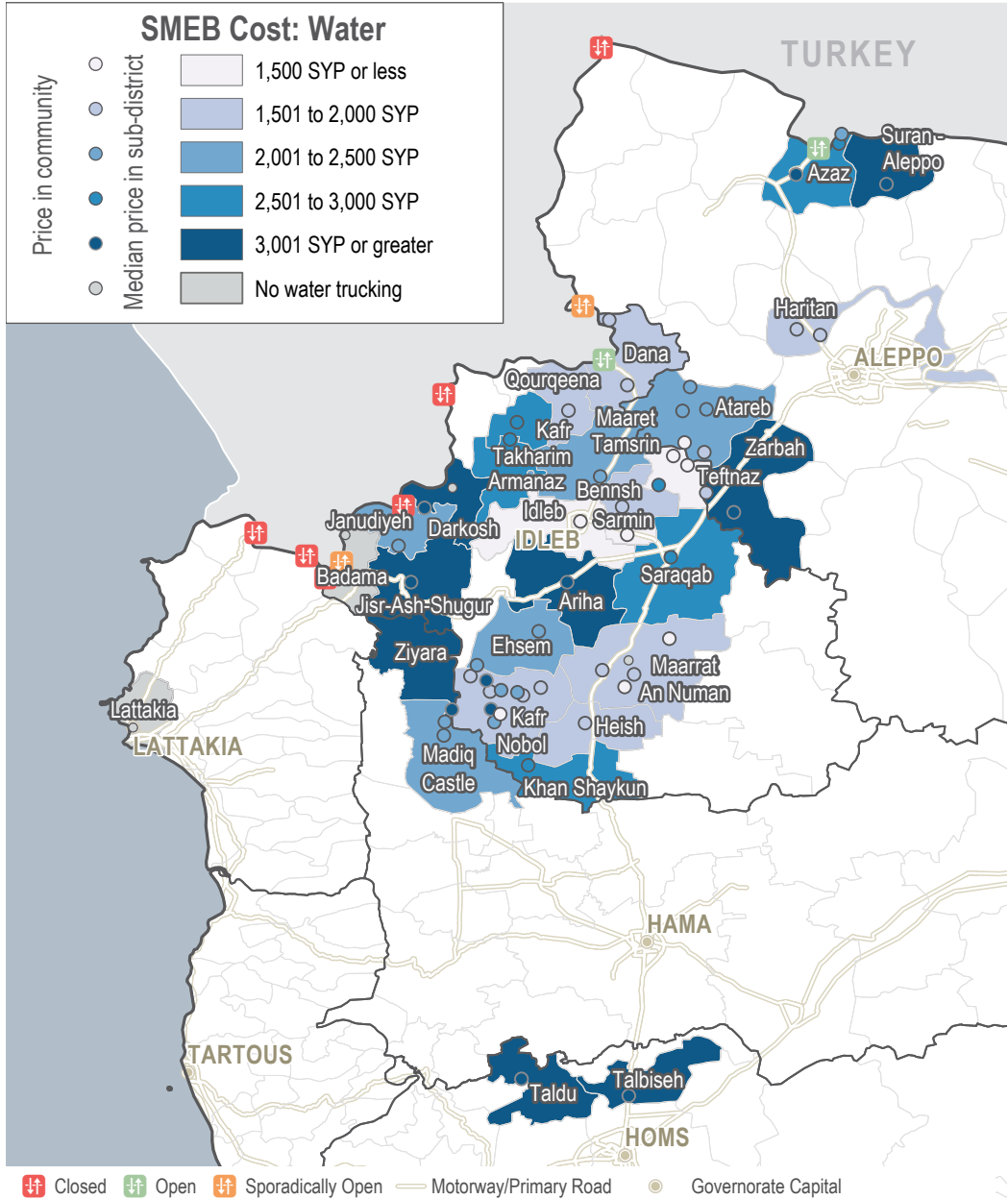
MEDIAN TRANSPORT FUEL COSTS, BY MONTH & TYPE

Thousand Syrian Pounds



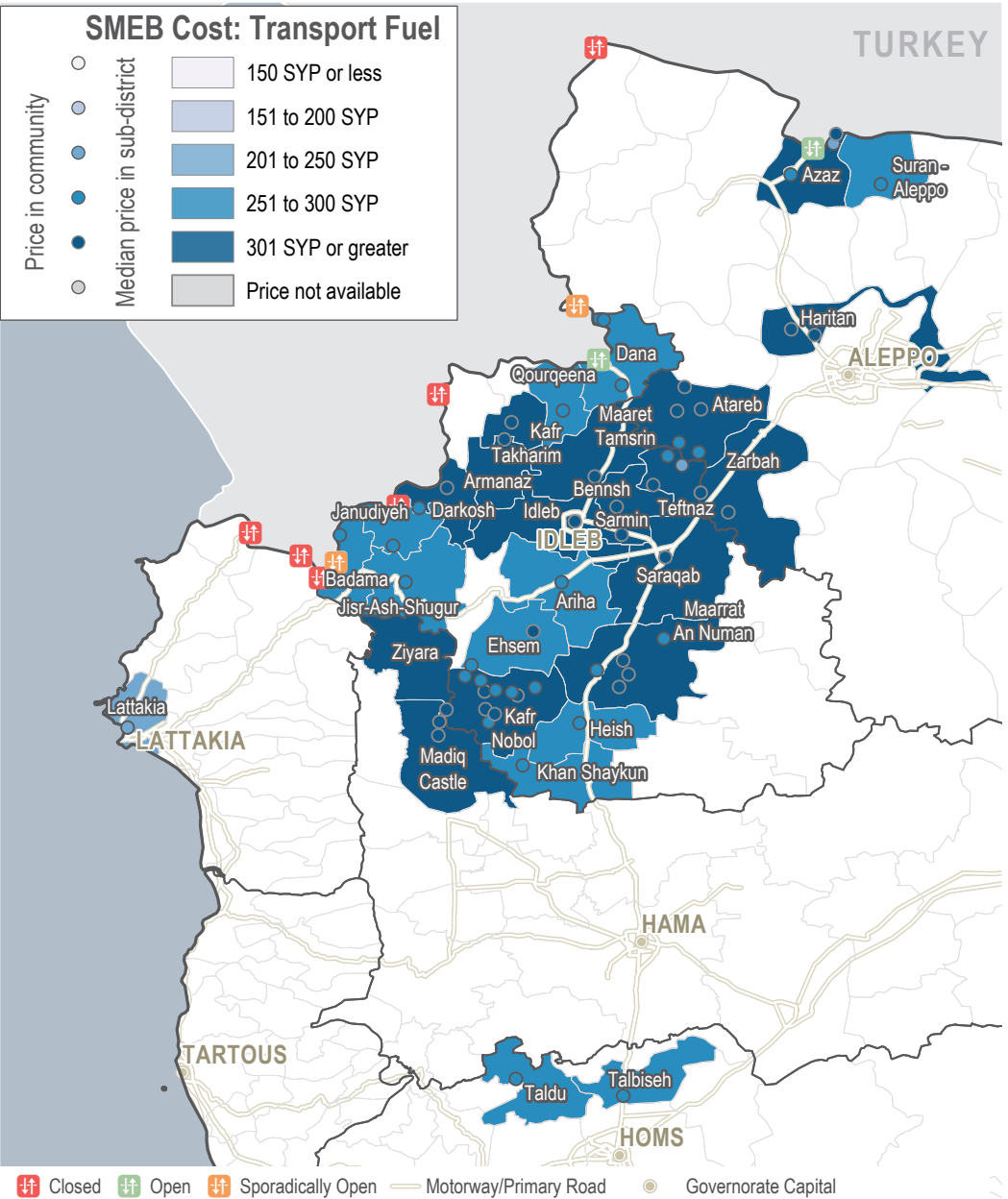
SMEB WATER TRUCKING

Sub-districts & communities, Syrian Pounds



TRANSPORT FUEL

Sub-districts & communities, Syrian Pounds



MEDIAN SMEB HYGIENE ITEMS

12 bars soap, 4 packs of 10 sanitary pads, 200g toothpaste, Syrian Pounds

Sub-district	SMEB Hygiene Items	One month change	Six month change
Northwest Syria	3,925	-6%	-13%
Ariha	3,013	+12%	+4%
Armanaz	4,269	+12%	-13%
Atareb	5,765	+13%	+22%
A'zaz	4,550	-13%	-4%
Badama	NA	NA	NA
Bennsh	4,875	-10%	0%
Dana	3,356	-19%	-27%
Darkosh	4,222	+3%	+1%
Ehsem	4,746	+1%	-10%
Haritan	3,080	-27%	NA
Heish	2,636	+7%	NA
Idleb	3,975	+5%	-12%
Janudiyeh	3,720	-17%	0%
Jisr-Ash-Shugur	4,334	0%	-4%
Kafr Nobol	2,993	+17%	-1%
Kafr Takharim	3,908	+10%	+15%
Khan Shaykun	4,030	-6%	-15%
Lattakia	5,750	-12%	-7%
Maaret Tamsrin	4,485	0%	-7%
Ma'arrat An Nu'man	2,931	-16%	NA
Madiq Castle	3,784	+3%	-9%
Qourqeena	3,884	+2%	-9%
Saraqab	5,071	-3%	NA
Sarmin	3,686	-1%	NA
Suran	4,441	0%	-2%
Talbiseh	3,925	NA	NA
Taldu	3,888	-5%	NA
Teftnaz	3,403	-32%	-31%
Zarbah	6,150	+17%	+23%
Ziyara	3,863	+5%	-10%

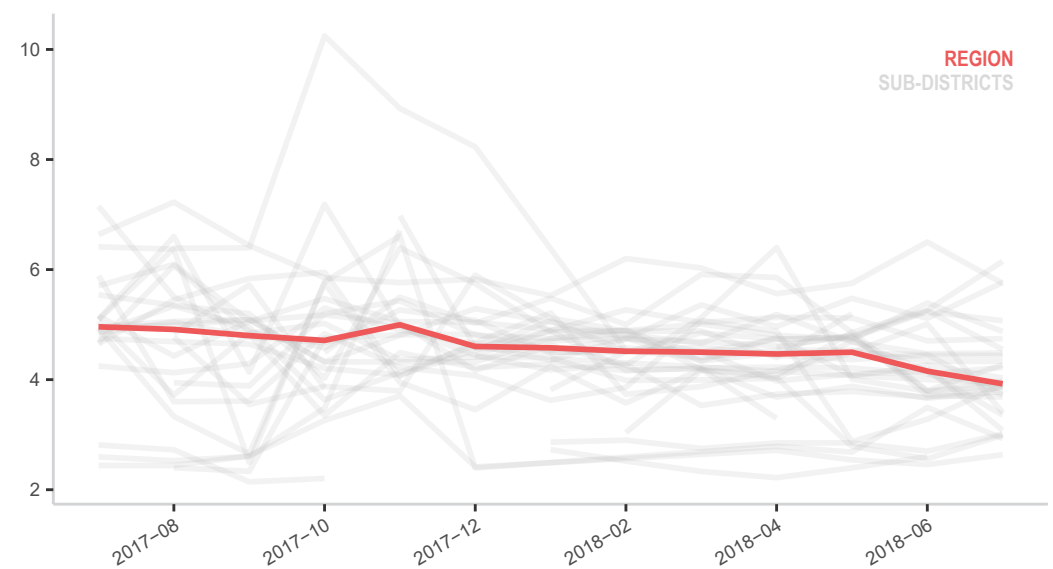
MEDIAN SMEB CELLPHONE DATA

1GB data, Syrian Pounds

Sub-district	SMEB Phone Data	One month change	Six month change
Northwest Syria	500	0%	0%
Ariha	400	0%	0%
Armanaz	300	-40%	-40%
Atareb	500	0%	-9%
A'zaz	1,000	+5%	0%
Badama	500	0%	0%
Bennsh	488	-7%	-3%
Dana	750	-6%	+7%
Darkosh	575	0%	-4%
Ehsem	475	+6%	+19%
Haritan	500	0%	NA
Heish	500	+25%	NA
Idleb	500	+25%	-17%
Janudiyeh	500	0%	0%
Jisr-Ash-Shugur	575	+5%	-18%
Kafr Nobol	500	0%	+43%
Kafr Takharim	500	-17%	0%
Khan Shaykun	750	0%	+7%
Lattakia	4,000	0%	0%
Maaret Tamsrin	500	0%	0%
Ma'arrat An Nu'man	475	0%	NA
Madiq Castle	350	-13%	-26%
Qourqeena	500	0%	-9%
Saraqab	600	0%	NA
Sarmin	400	0%	NA
Suran	750	-3%	-12%
Talbiseh	5,000	NA	NA
Taldu	5,000	+400%	NA
Teftnaz	600	0%	0%
Zarbah	425	-11%	+6%
Ziyara	300	-25%	-40%

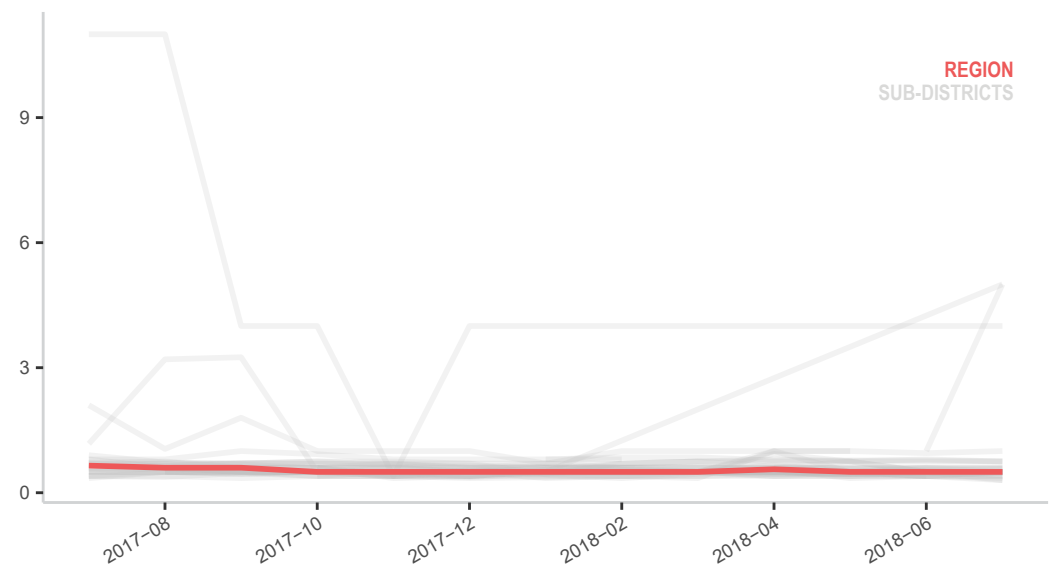
MEDIAN SMEB HYGIENE ITEMS COSTS, BY MONTH

Thousand Syrian Pounds



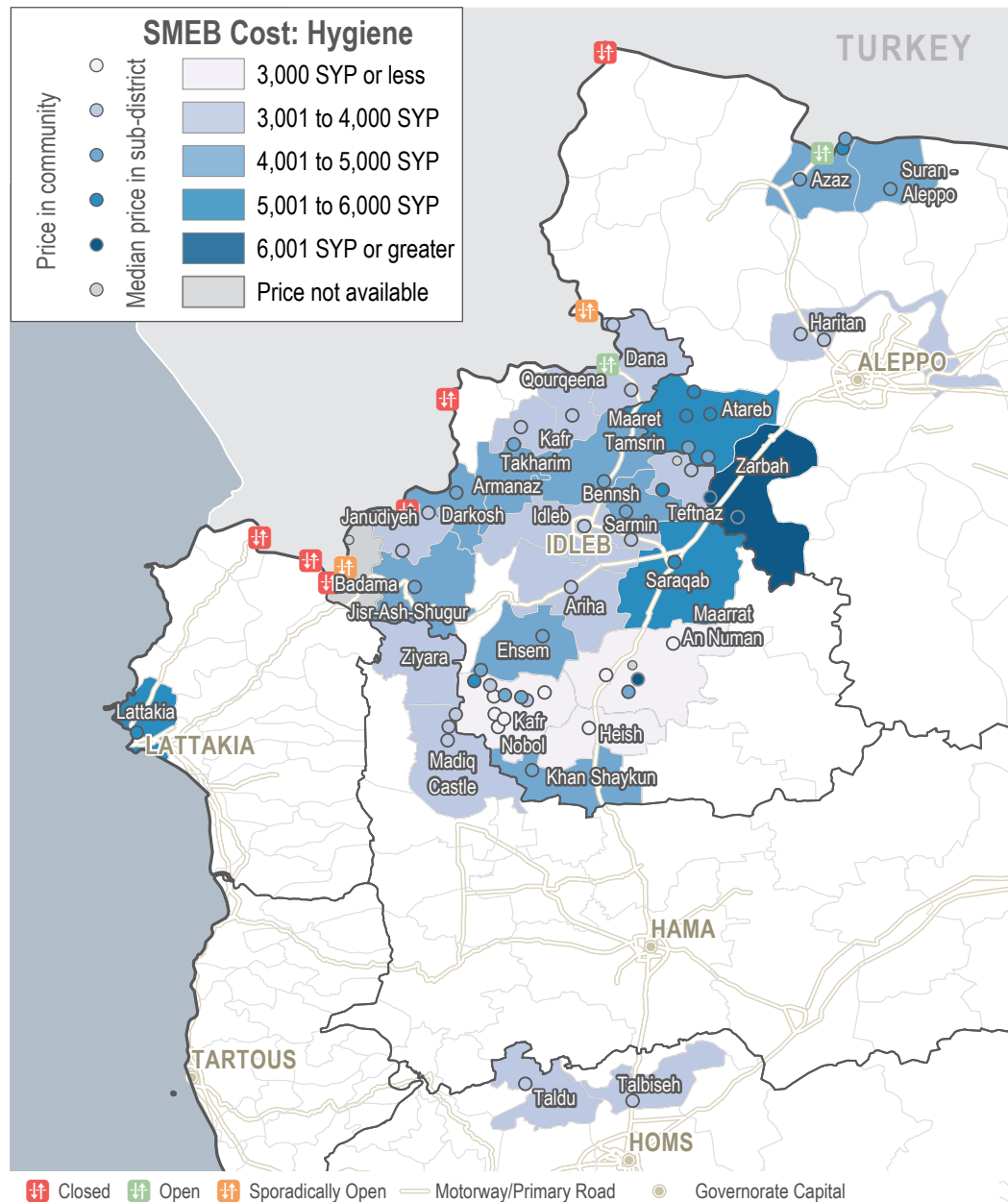
MEDIAN SMEB CELLPHONE DATA COSTS, BY MONTH

Thousand Syrian Pounds



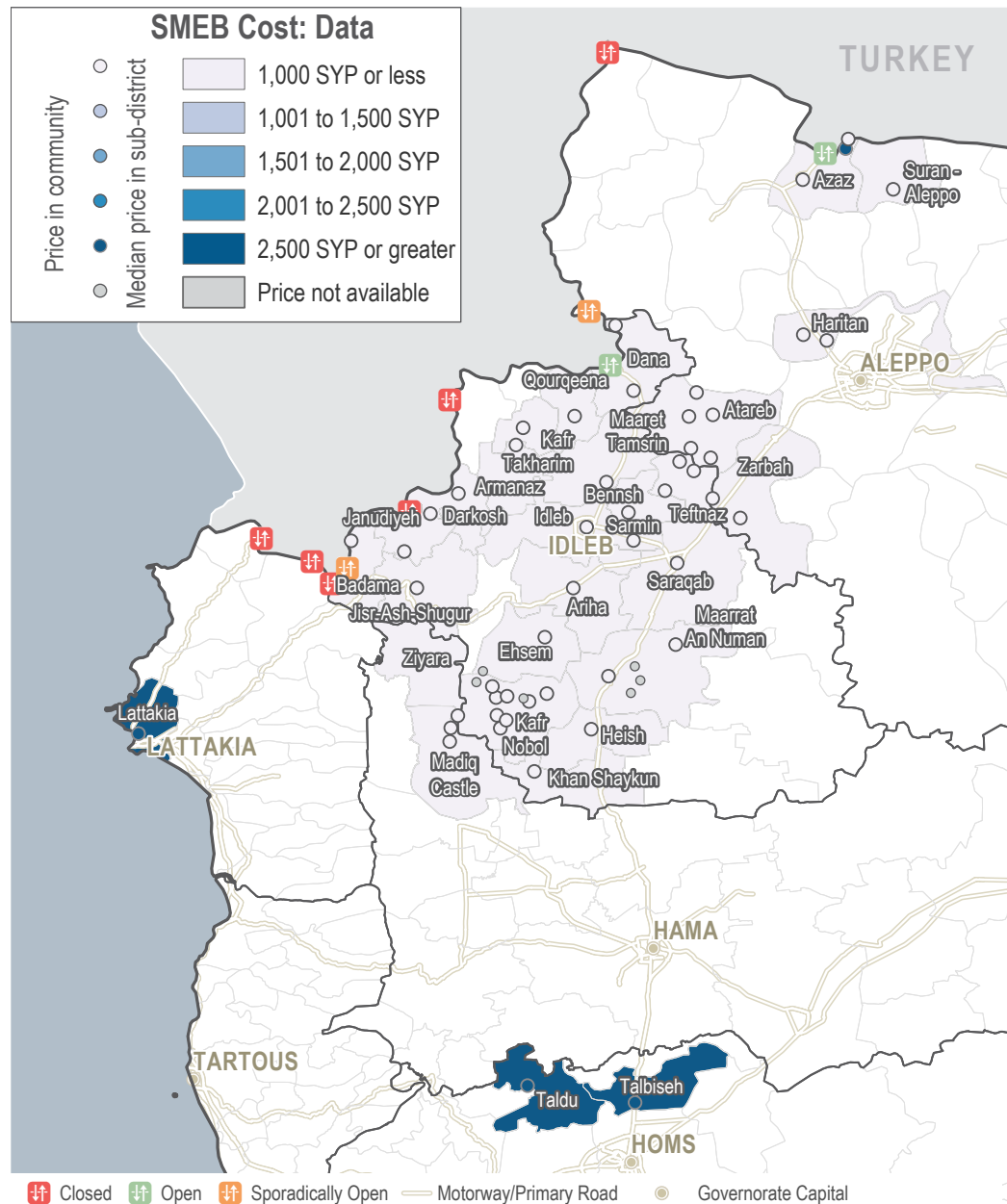
SMEB HYGIENE ITEMS

Sub-districts & Communities, Syrian Pounds



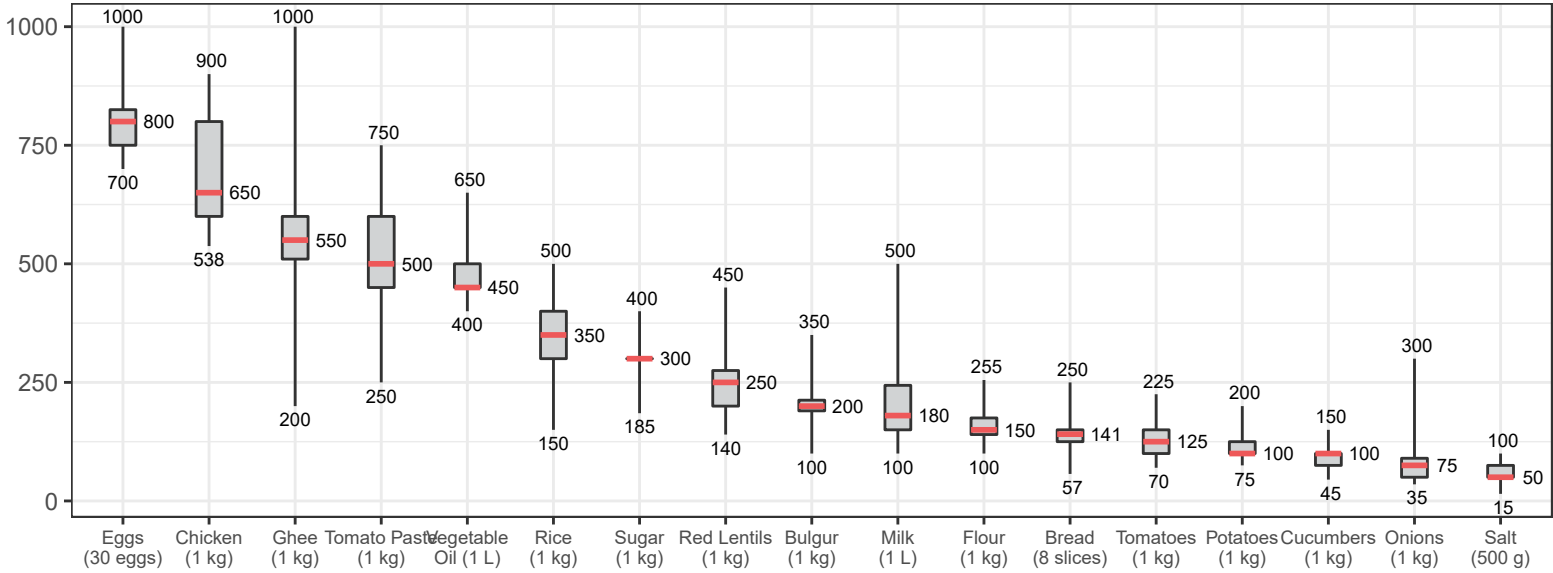
SMEB CELLPHONE DATA

Sub-districts & Communities, Syrian Pounds



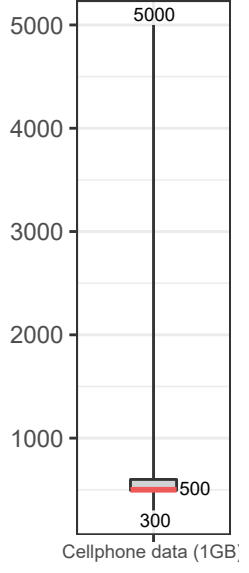
ASSESSED FOOD ITEMS

Syrian Pounds



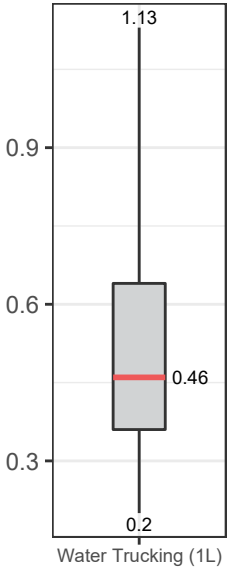
CELLPHONE DATA

1GB



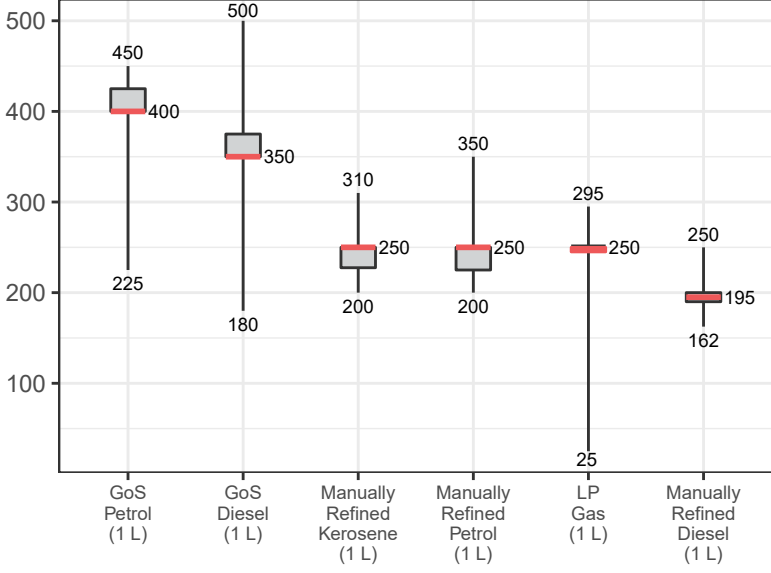
WATER TRUCKING

Syrian Pounds



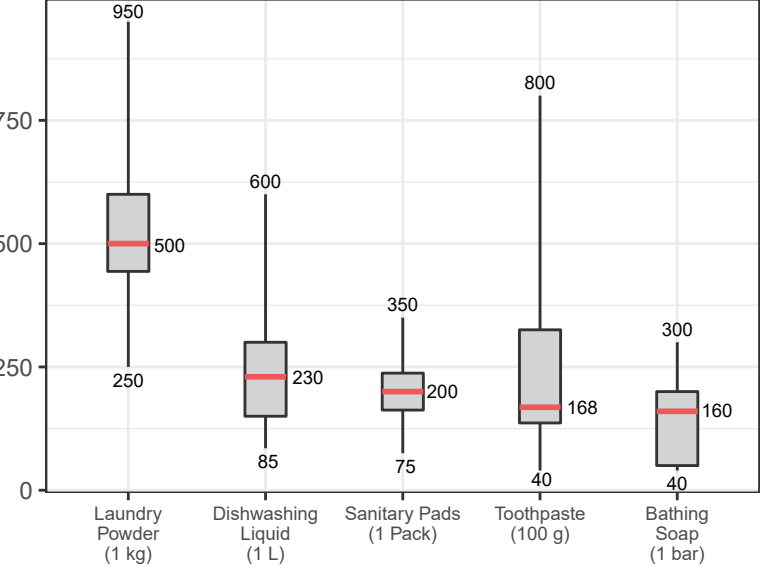
ASSESSED FUEL ITEMS

Syrian Pounds

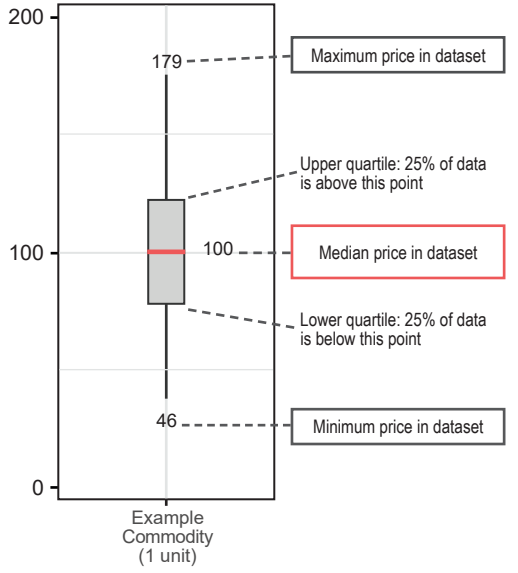


ASSESSED HYGIENE ITEMS

Syrian Pounds



READING BOXPLOTS



METHODOLOGY

To be included in the Syria Market Monitoring Exercise, markets must be permanent in nature, large enough to support at least two wholesalers, and diverse enough to provide a sufficient variety of goods and commodities. The shops surveyed within each market must be housed in permanent structures and must sell certain items to be eligible for inclusion.

Participating organisations train their enumerators on the Market Monitoring methodology and data collection tools using standard training materials developed by REACH. Each enumerator aims to assess three to five shops of each type in the main market in their assigned sub-district, using surveys to collect information about prices, current product inventory and the time needed

to replace current stocks. In sub-districts where direct surveying by enumerators is not possible, such as Lattakia and Deir-ez-Zor, data collection is conducted remotely through key informants such as shop owners, suppliers and consumers.

A survey form is deployed on KoBo each month to capture price and stock information from different types of establishments, including grocery stores, fuel traders, currency exchange shops, water trucking services and mobile phone shops, among others. Nearly all participating partners submit their data to these KoBo forms, using the KoBoCollect Android app to upload data. A small number of partners, by prior permission, collect data using fully harmonised data

collection tools deployed on other platforms, then submit their raw data to REACH for standardisation, compilation and cleaning.

Following data collection, REACH compiles and cleans all partners' data, normalising prices and cross-checking outliers. The cleaned data is then analysed by SMEB costs, components of the SMEB, and by commodities. These trends are observed at the sub-district-level and, when possible, at the community-level. Prices are divided into quartiles and boxplots are created to help CBR-TWG members understand the distribution of prices. To illustrate local variations in prices and availability, REACH uses the collected data to map the price of an SMEB in each

sub-district and adds illustrations of surrounding border crossings, with data sourced from OCHA. In addition, each SMEB component costs and transport fuel prices are graphed to visualize trends over time. The cleaned data sets are available on the REACH Resource Centre and are distributed to all participating partners, as well as to interested clusters and the broader humanitarian community.

CHALLENGES AND LIMITATIONS

As the Syria Market Monitoring Exercise currently includes 13 partners based in 2 hubs, achieving a consistent approach is inherently challenging. Participating organisations are therefore requested to adopt harmonised data collection methodologies and tools to ensure that the data uploaded is as accurate as possible.

Confirming commodity shortages in certain communities was difficult due to a lack of information about general market availability. When follow-ups were unable to confirm these shortages, this is stated in the text.

Because this exercise collects data directly from vendors and because it relies on partner organizations for its wide coverage, the exercise may lose coverage sporadically or for longer periods of time owing to challenges in accessing locations or due to loss in the shared data collection capacity of the project. This impacts the ability to report on trends, as can be seen in the line graphs and 'NA' values in the tables.

CHANGES TO COVERAGE

Given security and access constraints in the south of Syria, data collection was unable to take place for the July Market Monitoring situation overview. Due to access issues and an escalation of conflict, coverage was lost in Eastern Ghouta in March 2018.

CALCULATING 'MEDIAN CHEAPEST PRICE'

This figure is calculated by taking the median of the minimum-reported prices of a region's sub-districts. In turn, the minimum-reported prices for each sub-district were taken from the median of the minimum-reported prices of the constituent towns assessed.

CALCULATING SURVIVAL MINIMUM EXPENDITURE BASKET (SMEB) COSTS

The cost of a SMEB is calculated for each assessed sub-districts by calculating the median cheapest price of each SMEB commodity in that sub-district, then multiplying these medians by the number of units that an average Syrian household requires to purchase in a month. The composition of the SMEB can be found on page 1 and SMEB vegetables includes potatoes, tomatoes, onions and cucumbers.

WHAT IS THE CASH-BASED RESPONSES TECHNICAL WORKING GROUP?

The Cash-Based Responses Technical Working Group (CBR-TWG) was established in May 2014 to analyse the impact of the ongoing conflict on markets in Syria and guide the implementation of humanitarian cash and voucher programmes within those markets. REACH and the CBR-TWG have been partners on the Syria Market Monitoring Exercise since early 2015. Since February 2017, the exercise expanded coverage into the south, bringing monthly market assessments to communities in Damascus, Rural Damascus, Dar'a and Quneitra governorates. However, we have since lost coverage in the south of Syria.

ABOUT REACH

REACH is a joint initiative of two international non-governmental organizations — ACTED and IMPACT Initiatives — and the UN Operational Satellite Applications Programme (UNOSAT). REACH facilitates the development of information tools and products that enhance the capacity of aid actors to make evidence-based decisions in emergency, recovery and development contexts. By doing so, REACH contributes to ensuring that communities affected by emergencies receive the support they need. All REACH activities are conducted in support to and within the framework of inter-agency aid coordination mechanisms. For more information, please visit our website at www.reach-initiative.org, contact us directly at geneva@reach-initiative.org or follow us on Twitter at [@REACH_info](https://twitter.com/REACH_info).