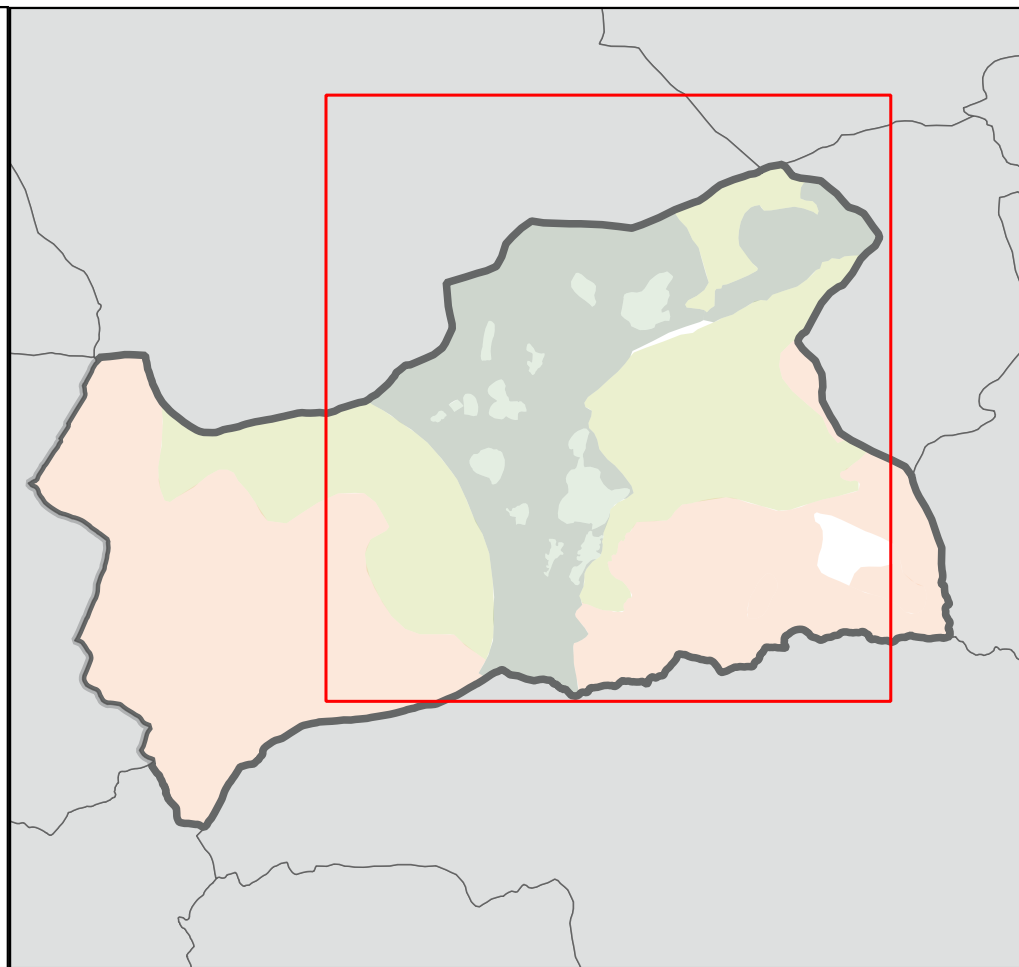
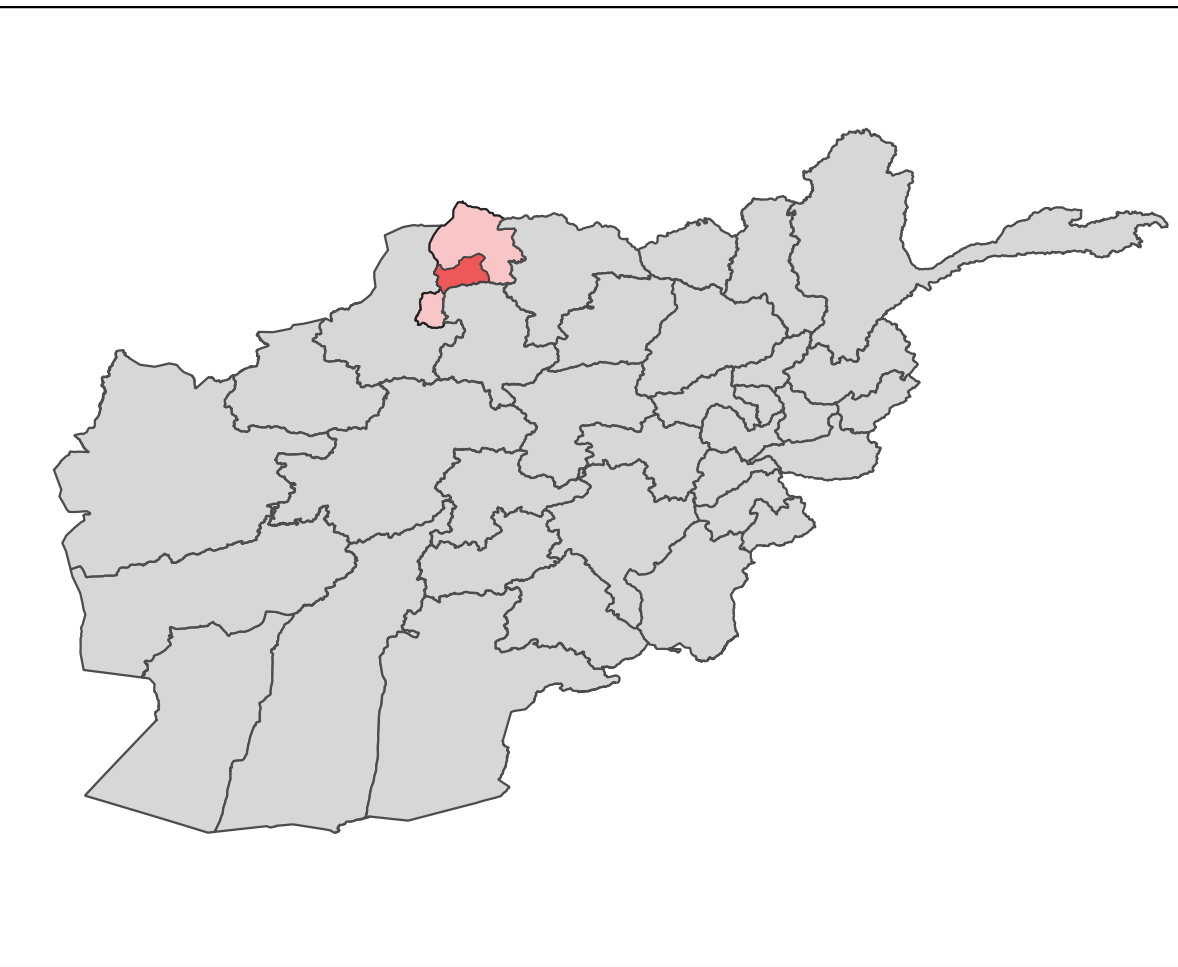
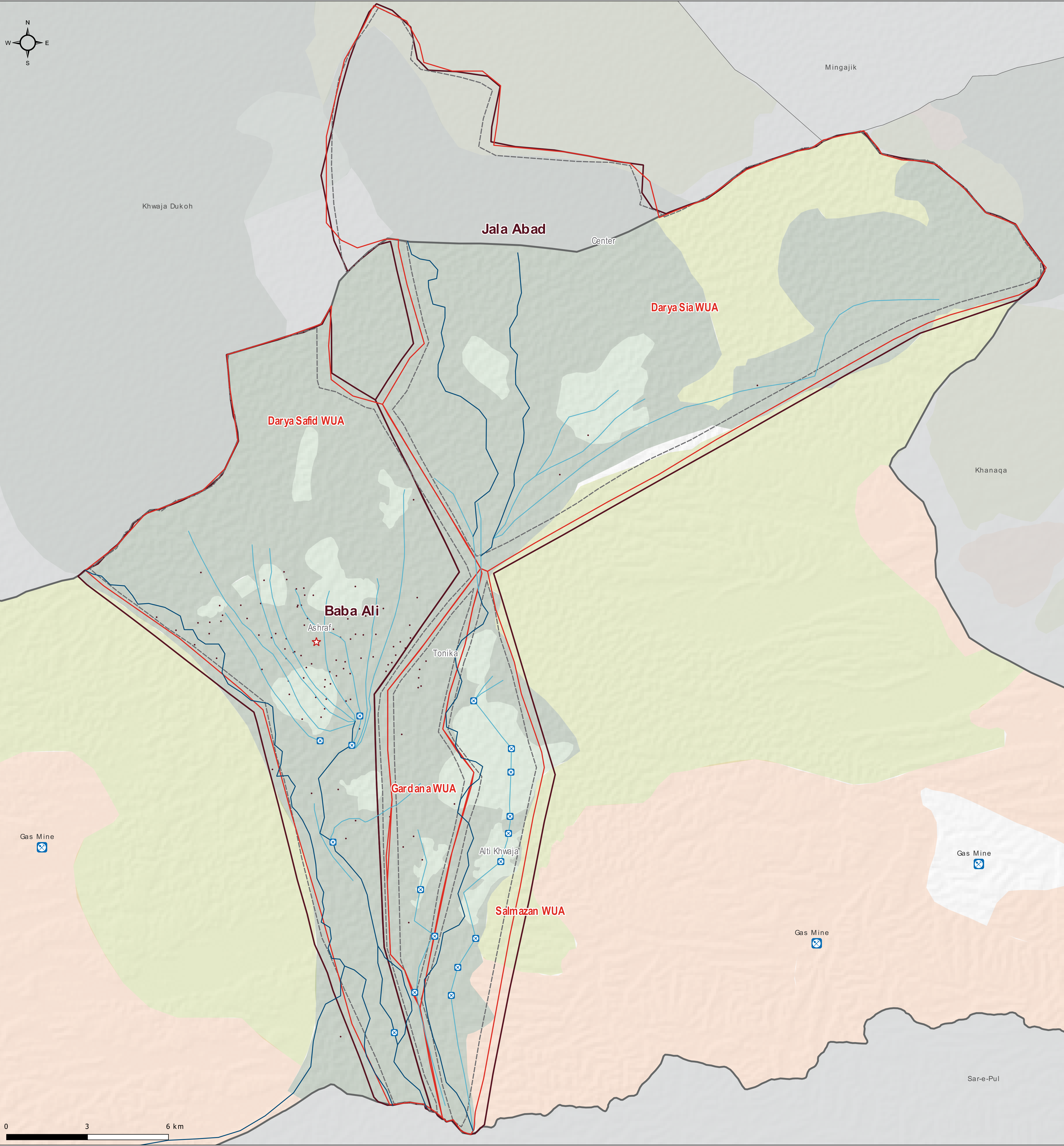


# Afghanistan - Jawzjan Province - Shiberghan District

## Water Management Structure

For humanitarian purpose only  
Production date: 14 June 2020



### Water Management

- Water User Association
- Mirabashi area
- Mirab Area
- Chakbashi area
- District center
- Canal gates
- Mines
- Settlements

### Boundaries

- District boundary
- District of interest

**Mirabashi:** Water manager for rivers, their associated canals, and the irrigations systems derived from them.  
**Mirab:** Water manager for all irrigation systems linked to a specific canal and the areas those systems provide water to.  
**Chackbashi:** Water manager for irrigation systems for a village or collection of villages.

### Land type

- Horticulture
- Irrigated
- Rainfed
- Natural Pasture Land
- Natural Tree Forest
- Pistahio Forest
- Lake

### Hydrology

- Canal
- Flood Canal
- Small River

File name: AGORA\_AFG\_Map\_WUA\_Jawzjan\_Shiberghan

Data Sources:  
Admin Boundaries: AGCHO  
WM layers: AGORA  
Coordinate System: WGS 84  
Contact:  
reach.mapping@impact-initiatives.org

Note: Data, designations and boundaries contained on this map are not warranted to be error-free and do not imply acceptance by the AGORA partners, associated, donors mentioned on this map.

Funded by



Implemented by



# AGORA